

Making your logistics operations optimized within minutes

Enterprise software solution to maximize the efficiency of your logistics on many levels.

OptiRoute is an automated, real-time optimized, flexible, planning and scheduling system for logistics operations and routes. State-of-the-art algorithms create an optimized logistic schedule in minutes while removing spreadsheets and time-consuming manual work. Sudden changes are processed just-in-time when the new optimized schedule is recalculated with the Optimus 4.0 platform. OptiRoute can handle standard transport processes and operations, and beyond.

Business needs addressable by OptiRoute

Saving shipments and delivery costs

OptiRoute saves shipment and delivery costs by using the optimal truck, shipment, and delivery routes for your vehicles regarding where they stop for loading and unloading and how the goods are organized in the cargo space.

Optimization inter-warehouse transportation

OptiRoute allows you to minimize inter-warehouse transportation required to collect all ordered items of a particular order. Distribution algorithms suggest where to store products to decrease the future need for inter-warehouse transport.

Easy rescheduling and prediction of needs

You can easily change your plans at any time. OptiRoute considers the workforce availability, the load that is currently in the warehouse, the weekly load, and can dynamically reschedule everything at any time. Based on historical data, we can adjust the system to predict what shipments or parcels will need to be sent and when.

Milk runs optimization

Utilizing the-state-of-the-art algorithms, OptiRoute calculates the optimal routes for pick-ups and deliveries. The system enables you to deliver small lots in concise lead times and therefore lower your average inventory levels and save operation costs and time.

Key benefits



Minimized transportation

More orders can be dispatched from a single warehouse directly, minimizing the inter-warehouse transportation. Inter-warehouse transportation costs can be decreased by as much as 60%.



Efficient truck routes

The system calculates the best routes according to the selected parameters. Shipment costs can be decreased by 20%. OptiRoute also ensures the load does not break.



CO2 reduced

Thanks to more efficient loading and logistics, OptiRoute significantly reduces CO2 emissions in a magnitude of tons. This is due to minimized transport needs as well as optimized truck routes.

Main technical features



Modular architecture

Thanks to modular architecture, there is no operation complex enough that OptiRoute could not solve. The system scales with the growth of your business.



An easy-to-customize solution

A library of more than 100 standard rules and constraints applicable to logistics can be tailored to your specific needs. Our experts are ready to analyze to define your requirements for optimization and tailor OptiRoute specifically to your needs.



Easy to use REST API

Fan of automation? We are too! Therefore, we offer a rich API to develop future automation using OptiRoute yourself if you wish.



On-premise, cloud, or hosted options

Select from hosting the system yourself on-premise, deploying it in your private or public cloud, or delegate the hosting and application to us completely. We have you covered in all circumstances.



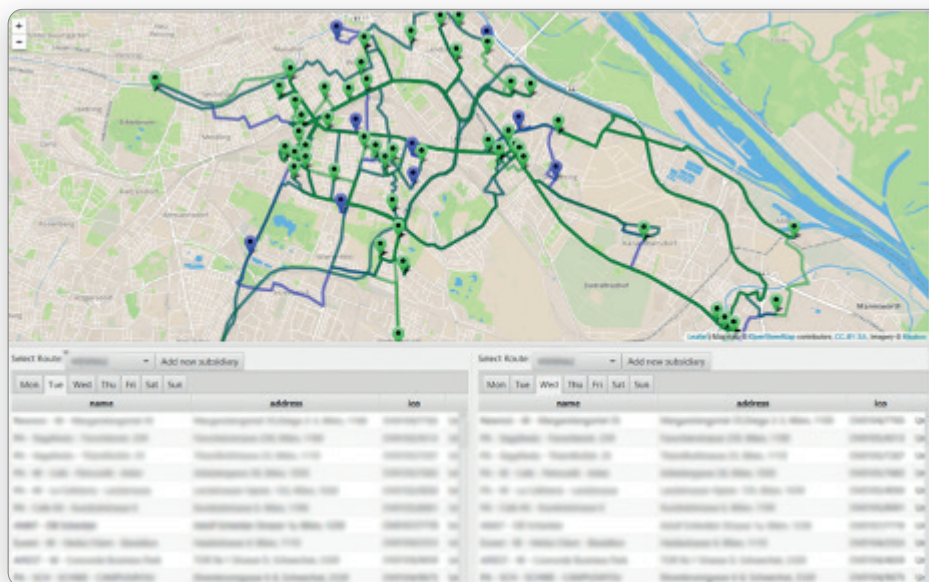
Easy connection to your digital ecosystem

This system can be integrated into a wide range of environments. The standardized API layer allows us to connect to the frequently used systems, including modern RPA systems such as UiPath, BluePrism, or Integromat. Integrating into your current business processes is quick and easy.

Case study

Optimization of FMCG delivery routes enabled a business expansion and cut travel costs.

For Crocodile, we developed an AI-aided optimization logistics planning solution to propose cost-efficient supply routes adhering to tight delivery constraints with a manual reconfiguration of routes. Using our custom logistic planning application to build on an optimization engine, we digitized, standardized, and redesigned the company logistics' route planning process. The company could expand the business and saved up to 30% of travel costs.



The Top-Quality AI Services Provided by Blindspot.AI

Do you need to solve any other problems and accelerate business growth with AI? Let us know!

Blindspot.AI is a highly professional team of AI experts delivering end-to-end implementations of AI systems for multinational companies and startups.

Blindspot is your partner in adopting and using AI in any area of business processes.



**Artificial Intelligence
business consulting**




**Custom AI solution
development**




**Machine learning /
data science team**

 **Founded 2014 in Prague,
Czech Republic**

 **Member of
Adastra Group**

 **Get in touch with us:
contact@blindspot.ai**

 **Karolinska 654/2
186 00 Prague, CZ**