

integrate_it
AN MHP PRODUCT.

Production experts **do not have easy access to their machine data** in order to pre-process and standardize it. Therefore, they **are not able to leverage optimization potentials in production.**

WE ENABLE YOU FOR YOUR SMART FACTORY!



**Condition Monitoring +
Predictive Maintenance / Quality**



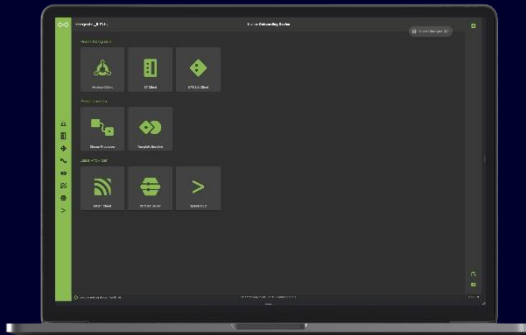
Energy Metering



Digital Twin

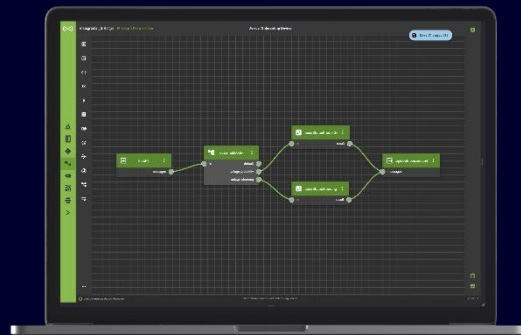
- Reduction of overhead costs for use cases
- Reduction of downtime and scrap
- More transparency over assets and production

Feature 1: OT/IT Protocol Conversion



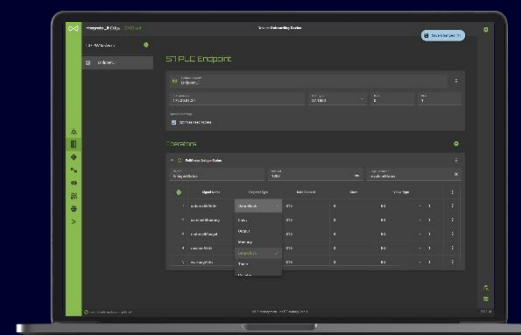
- OPCUA and
- RFC 1006
- Modbus
- Kafka
- REST

Feature 2: Stream Processor



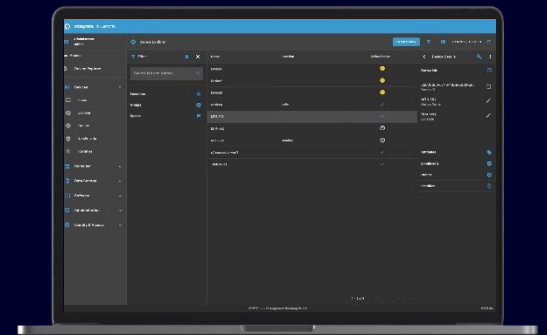
- **Low-Code** based rule engine
- Enables rule-based data manipulation, pre-processing and transformation
- **Saves cloud ingestion costs**

Feature 3: Template Enricher



- Machine data is converted into human-readable JSON format
- can be enriched and mapped freely configurable in data models

Feature 4: Device Management



- Central **Device Management** via cloud or
- On-premises
- **Saves overhead costs** for connectivity up to **25%**