



COPILOT FOR MICROSOFT 365 WORKSHOP



In the fast-paced and competitive landscape that describes today's educational organizations, educational leaders want to tap into the capabilities of AI to boost productivity, creativity, and innovation for faculty and staff. Embracing AI necessitates meticulous planning—thorough preparation and a state of readiness—to guarantee success and return on investment. Copilot for Microsoft 365 is no exception. Microsoft Copilot has the capability to enhance teaching efficiency, personalize learning experiences, and contribute to a safe and innovative educational environment.

Embark on the initial stages of bringing AI into education with Connection's Copilot for Microsoft 365 Workshop. Designed as a three-phase engagement, our workshop helps you assess needs, prioritize Copilot scenarios, and define an actionable road map. It also offers insight into your readiness and uncovers optimization opportunities through targeted services that develop your data estate, analyze and augment access, and maximize security. Let Connection help prepare you for Copilot and achieve its full benefits and ROI.

Who Should Attend?

This workshop is for K12 and Higher Ed organizations that are considering Copilot for Microsoft 365, want to explore its capabilities, and learn what it takes for a successful implementation.

WORKSHOP AGENDA

1 Assess

- Define scope, identify stakeholders, and gather information on key business scenarios
- Complete optimization assessment

2 Art of the Possible

- See what Copilot for Microsoft 365 brings to the employee experience by fostering creativity, boosting productivity, and elevating skills

3 Build the Plan

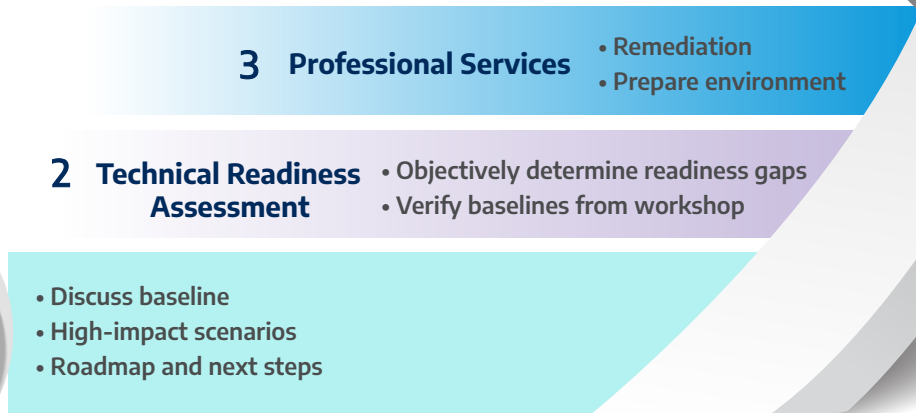
- Develop an implementation plan based on prioritized scenarios
- Define next steps and timeline

Workshop Outcomes

- Discovery and documentation of your organization's current state for technology, architecture, and process
- Creation of a gap analysis with a roadmap to readiness
- Development of SOWs for the services you've chosen to help you prepare for Copilot implementation
- Delivery of optimization assessment containing observations, recommendations, and a prioritized action plan



Your Copilot Journey with Connection



Why Connection for Microsoft?

Our mission is to connect educators with technology to enhance teaching and learning, elevate productivity, and empower innovation. As a Microsoft Solutions Partner, Connection offers products, technical expertise, services, and solutions to help education organizations adapt to the ever-changing technology landscape. We drive innovation through delivery and deployment of Microsoft hardware, software, professional learning for end users (teachers, faculty, and staff), and cloud solutions—leveraging our breadth of knowledge and proven capabilities to ensure you gain the most from your Microsoft investments.

Microsoft Partner | Azure Expert MSP

<p>Digital & App Innovation Azure</p>	<p>Microsoft Cloud</p>	<p>Business Applications</p>
<p>Infrastructure Azure</p> <p>Specialist Infra and Database Migration</p>	<p>Data & AI Azure</p> <p>Specialist Infra and Database Migration</p>	<p>Security</p> <p>Specialist Identity and Access Management Threat Protection</p>
		<p>Modern Work</p> <p>Specialist Teamwork Deployment</p>

Ready to take flight with Microsoft Copilot?
Contact your Connection Account Team today to get started.



Business Solutions | Enterprise Solutions | Public Sector Solutions
1.800.800.0014 | 1.800.369.1047 | 1.800.800.0019

www.connection.com/MicrosoftCopilot