



# Microsoft Sustainability Manager 360°: 12-Wk Implementation.

Record, report, and reduce  
your emission, water & waste  
impact.

**CS**  
Campana  
Schott

# Environmental Impact Management with MS Sustainability Manager.

## Managing sustainability is our responsibility.

Sustainability is the challenge of our time - in society, politics and business. Managing your impact and non-financial reporting is mandatory task and beneficial for investment decisions. The **Cloud for Sustainability** will lay an important foundation.



Track the impact of sustainability measures.



Connect diverse data sources.

## Accelerating your sustainable transformation with over 30 years of experience.



### Sustainability Expertise

Our experts provide the methodological, and subject-matter expertise needed for this project. Furthermore, we can help you in dealing with the various stakeholders and accompany the change process in your organization.



### Technical Know-how

As a Microsoft partner, we have many highly experienced experts on our team who can support you in the fast, technical roll-out of Sustainability Manager and help you to meet the complex data requirements.

## Our Approach

### I. Environmental Impact Scoping

We analyze your ecological baseline performance and initial data base situation and support you with the determination of significant impact sources and mitigation potential including the definition of reduction measures.

### II. Sustainability Data Management

We develop and implement your green data strategy and management to facilitate the collection and processing of high-quality data on environmental performance improvement in your data warehouse.

### III. Technical solution implementation

We manage the Microsoft Sustainability Manager roll-out at your organization, including the initial integration of environmental data and analysis procedures based on eligible methodologies to enable automated reporting and visualization.

# MS Sustainability Manager. Your ESG data and analytics solution.

The tool of **MS Cloud for Sustainability** provides a holistic solution for the collection and processing of environmental data from across the whole organization on carbon, water and waste (preview).

## Track your ESG performance

Collect and process data through:

- Connection to cloud documents
- Automatic data retrieval
- Definition of parameters
- Individual calculation formulas

## Manage your ESG progress

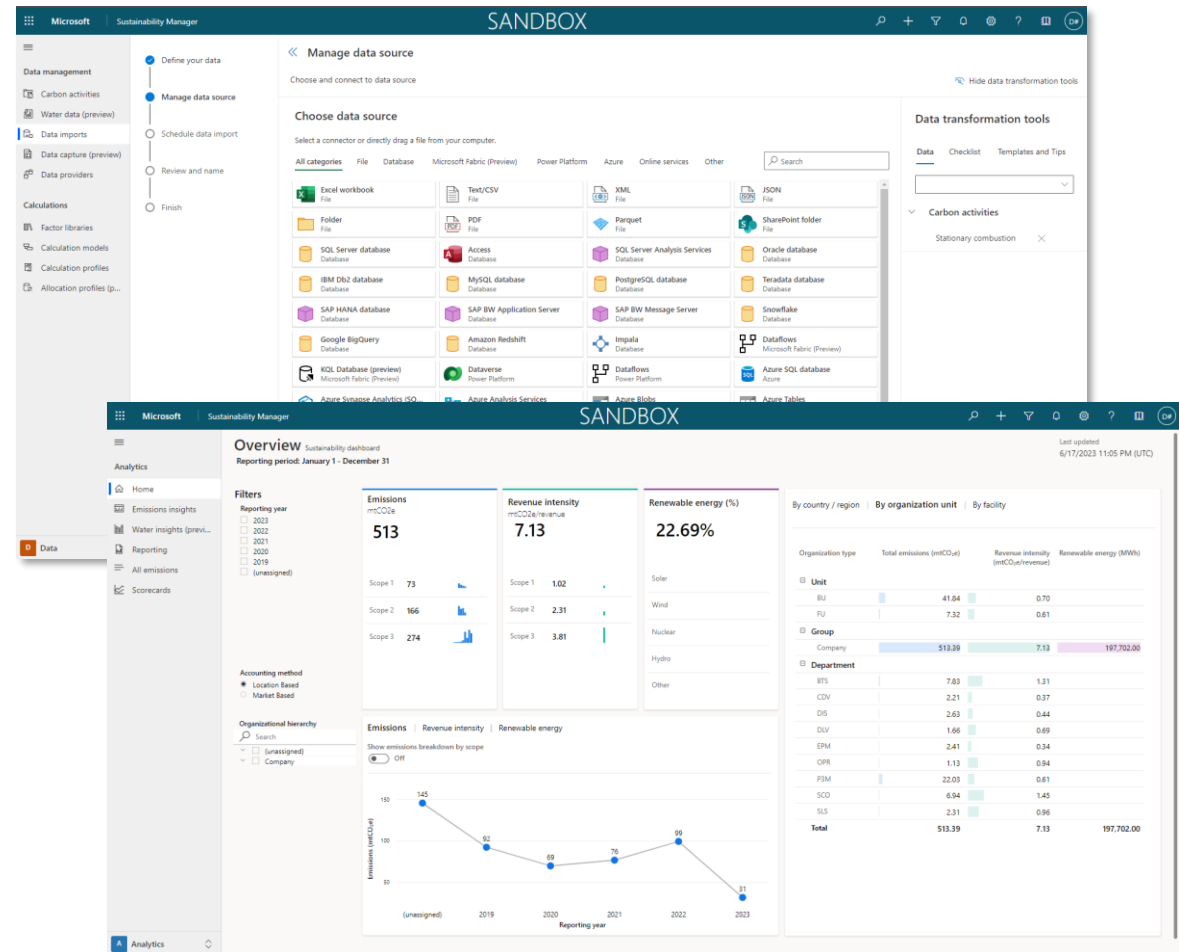
Analyze your performance:

- Visualize your environmental activity in dashboards
- Stay on track to reach your goals with scorecards
- Report your progress via automated data exports

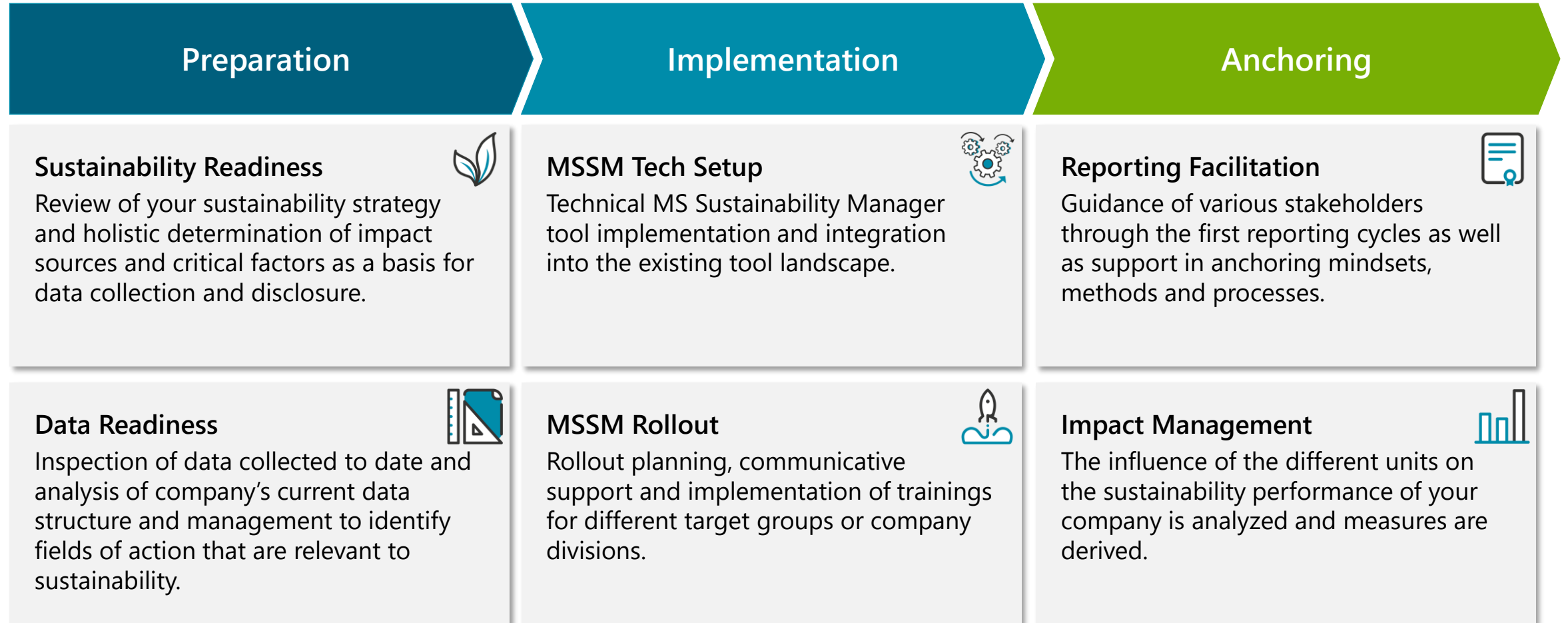
## Empower your sustainability data management

With the MSSM you get a tool with the advantages of the Microsoft environment, which continuously receives new functions, like:

- Access to updated emission factor libraries and calculations
- Supplier engagement portal
- AI enhancements like What-if forecasting and qualitative summarization



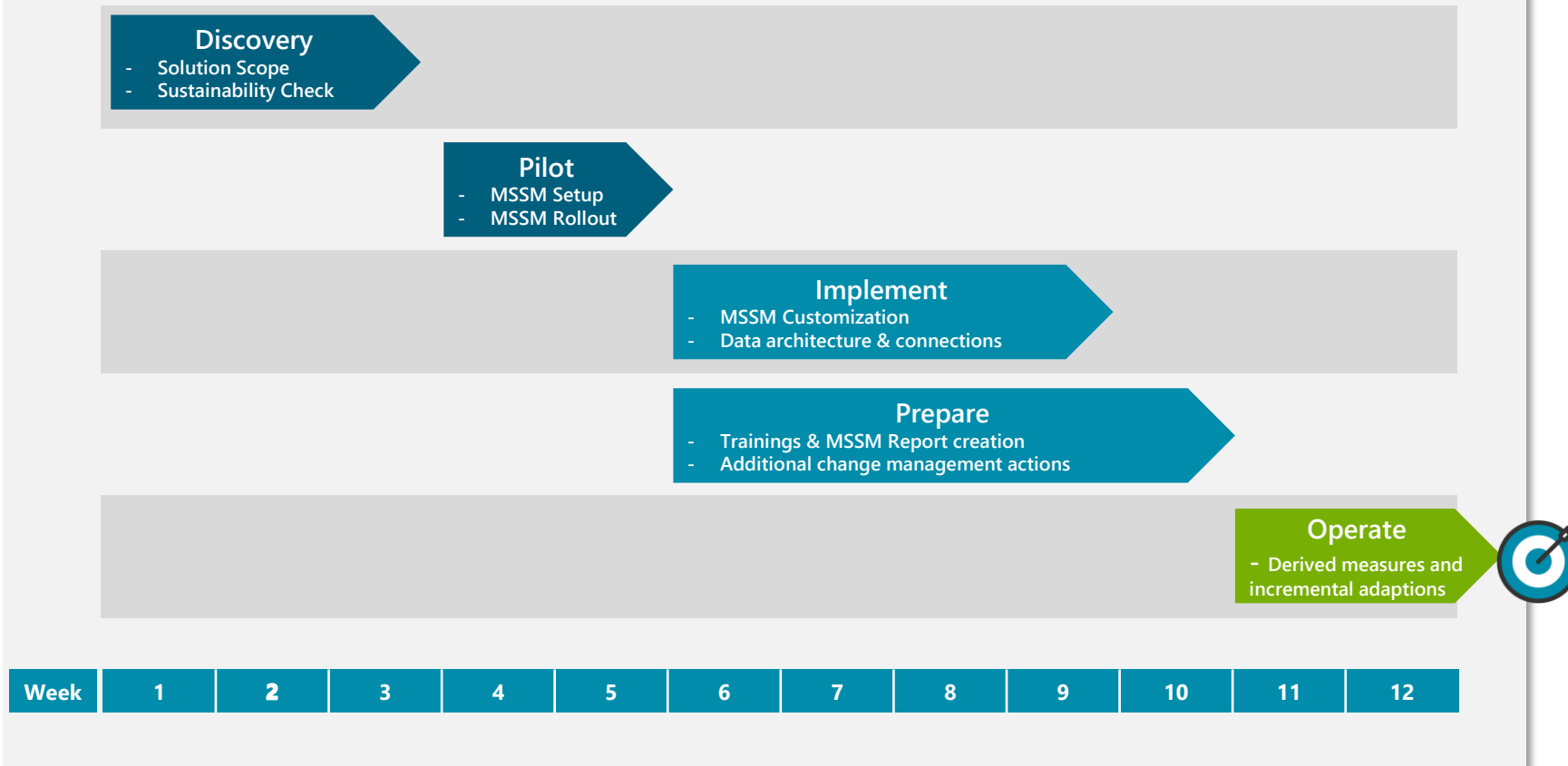
# Modular service offerings. Customizable modules for each phase of your implementation.



# Next step in your sustainable transformation.

## The journey to automated sustainability reporting.

### Roadmap of MS Sustainability Manager implementation:



### Project planning

According to your sustainability maturity level, your data basis and your corporate capabilities, the concrete timeline of the project will be determined, and the support efforts will be estimated.

Together, we can bring transparency to your environmental footprint.

**USA**  
New York City

**Deutschland**  
Berlin  
Frankfurt  
Hamburg  
Köln  
München  
Stuttgart

**Österreich**  
Wien

**Frankreich**  
Paris

**Schweiz**  
Zürich

# Thank you!

**Jens Paape**

Senior Account Executive  
Campana & Schott Süd GmbH  
Nymphenburger Str. 3a  
D – 80335 Munich  
Mobile +49 151 150 35 909  
[Jens.paape@campana-schott.com](mailto:Jens.paape@campana-schott.com)  
[www.campana-schott.com](http://www.campana-schott.com)

