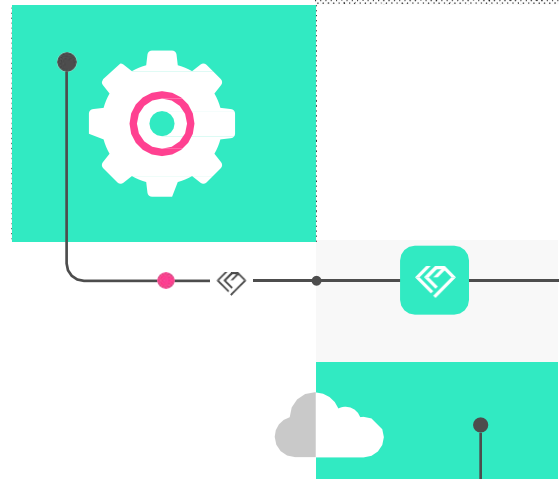




Respond to cloud threats with context. And fast.



Cloud security operations is too hard today



Real-time visibility is lacking

Cloud environments generate too much telemetry: seeing attacks in progress is too difficult & expensive



Detection coverage is incomplete

Detection engineering is slow and manual, and analysts spend too much time writing rules in the SIEM



Response is too slow

Cloud alerts don't have enough context to triage, and manually correlating events takes too long

How Gem helps

Gem offers an integrated approach to cloud security operations. The platform provides an industry-first assume breach approach to cloud security, purposely-built for the SOC. Gem automates detection and investigation, with novel cloud-native containment. Gem's platform gives organizations the tools they need to respond to cloud incidents in just four steps:



Prepare

Get optimized coverage with a continuous Cloud Incident Readiness dashboard



Detect

Detect cloud native threats in real time based on TTPs and cloud entities behavioral analytics



Triage

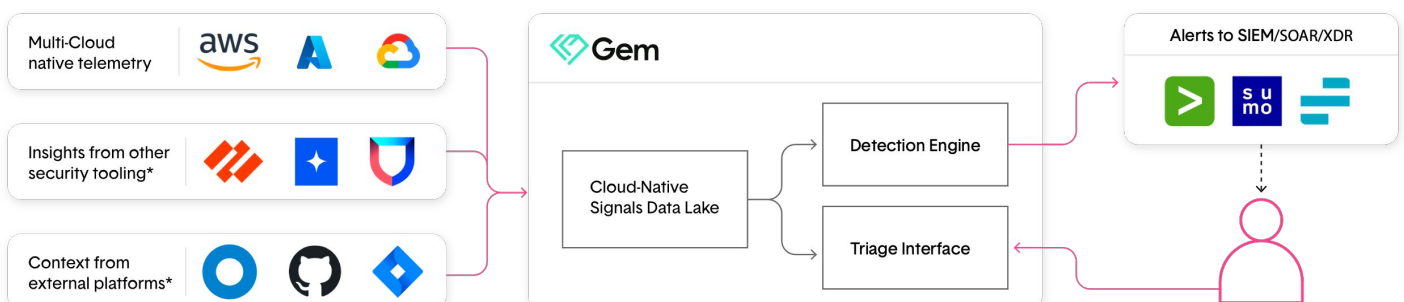
Fuse context from across your entire cloud infrastructure for root cause analysis in minutes



Contain

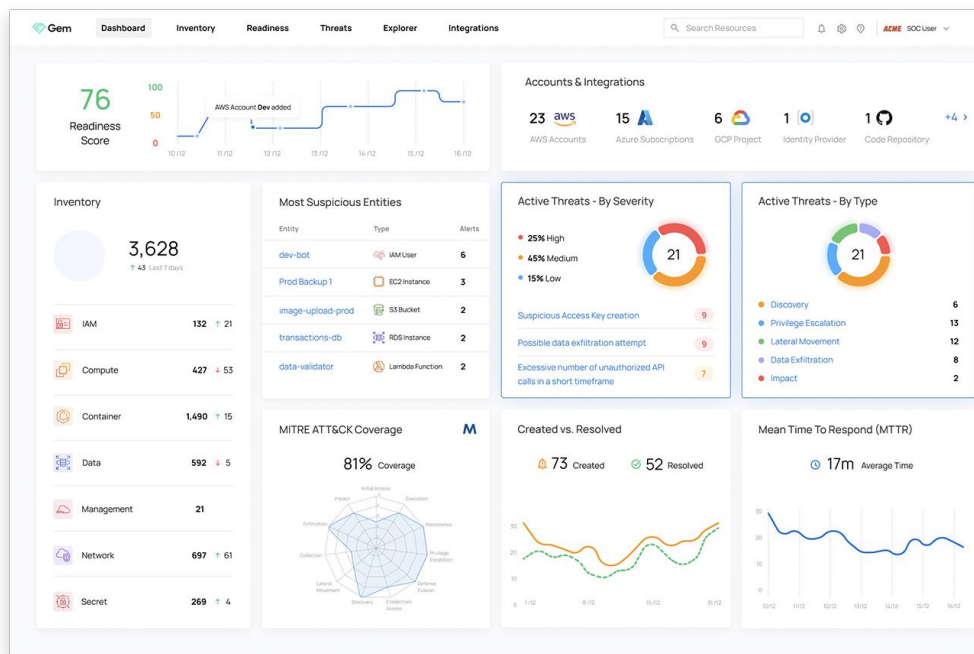
Isolate risks swiftly using cloud-native entity quarantine capabilities

How it works



*For a complete list of supported integrations, please reach out to our team

Respond to cloud threats faster



How we're different



Cloud security automation for SecOps teams

Gem's team has built our years of experience in incident response into an automated solution to simplify cloud SecOps



Pragmatic cloud breach preparedness

Prioritize what telemetry you need to optimize your coverage for your business's threat model



Behavioural analytics, attacker perspective

Gem's blend of TTPs and behavioral analytics brings much more context than a SIEM and simplifies root cause analysis



Industry first cloud-native containment

Proven reduction in MTTR through faster triage and containment functionality



Existing security workflow bolstered

Gem adds cloud confidence and context to your existing workflow for security operations

Get started today in just five minutes

1 One-Click Deployment

Connect with your CSPs. No agents required.

2 Confidence in minutes

Immediately assess your cloud incident readiness and get full detection coverage

3 Respond faster

Integrate with existing tools to get real-time context and enhance operations efficiency

For More Information

Contact us at contact@gem.security | www.gem.security

