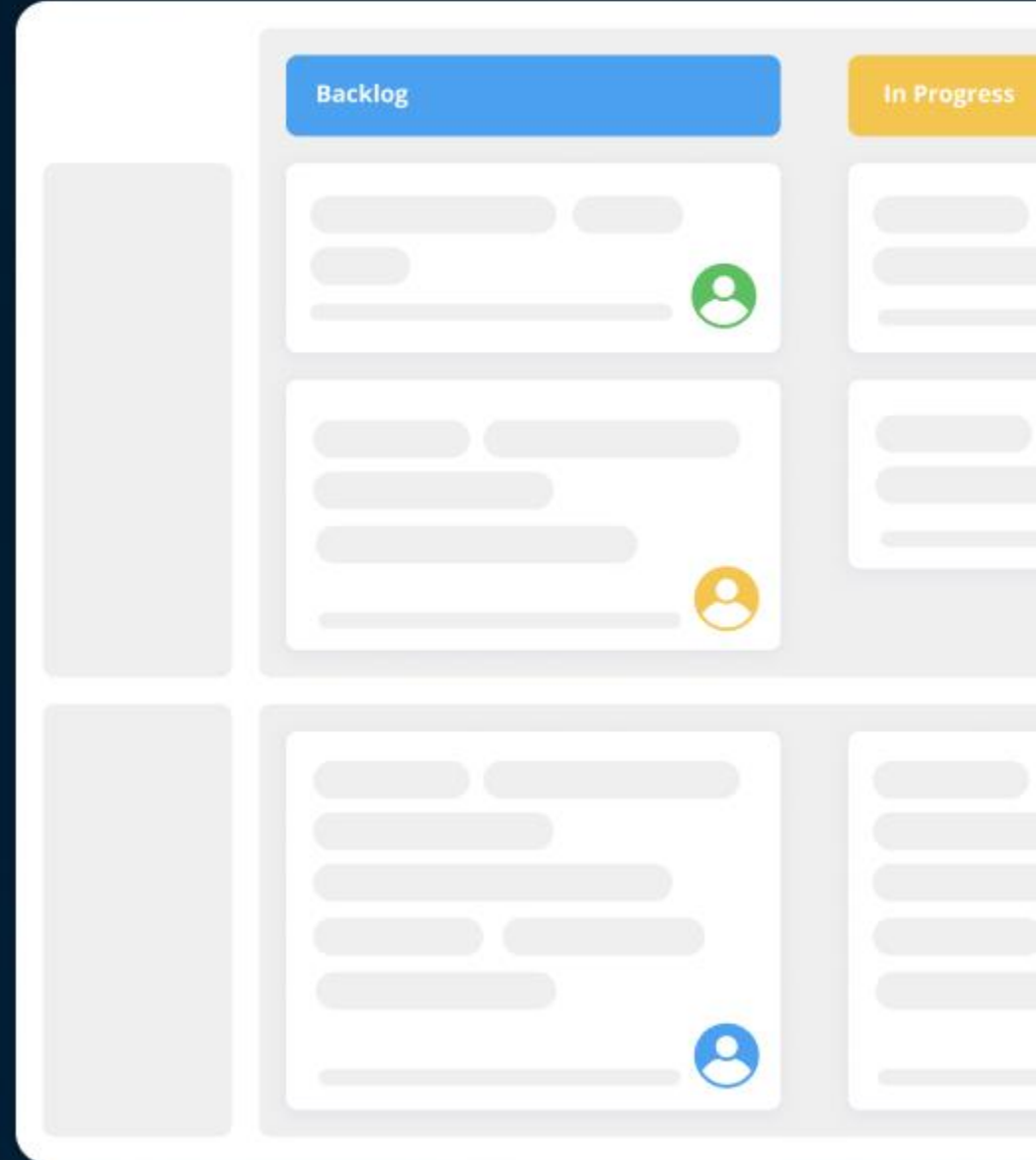




Teamhood: Product Overview



Make your team a champion, make your project a success!

Kanban-first work Management

Unique Kanban structure for flexibility

Swim-lanes, WIP limits, upstream and downstream boards, dependencies, customizable cards

Best in class visualization

True all-in-one system

Time tracking, workload management, Gantt charts

Dashboards, Agile metrics, Portfolio reports

Internal and external sharing of work documentation via pages

Easy to use and flexible to adapt

One-click away user actions. Multi action tools.

Fully customizable views.

Deep and rich integrations.



Easy

From registration to your first task board it takes less than 2 minutes.



Visual

Best Kanban and cognitive load reduction techniques in the product



Flexible

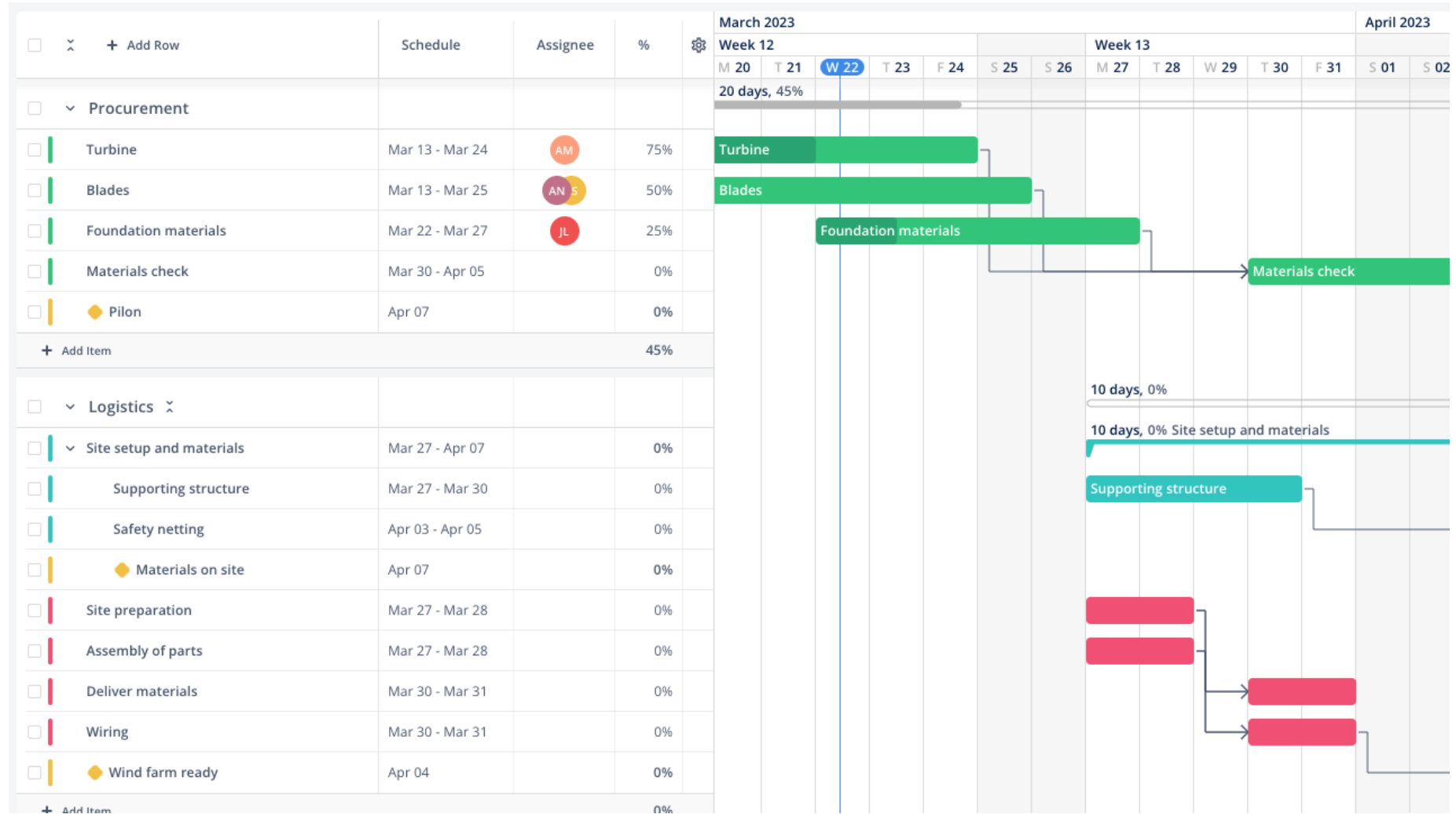
Use existing templates or have full customization power

Kanban board for workflow visualization

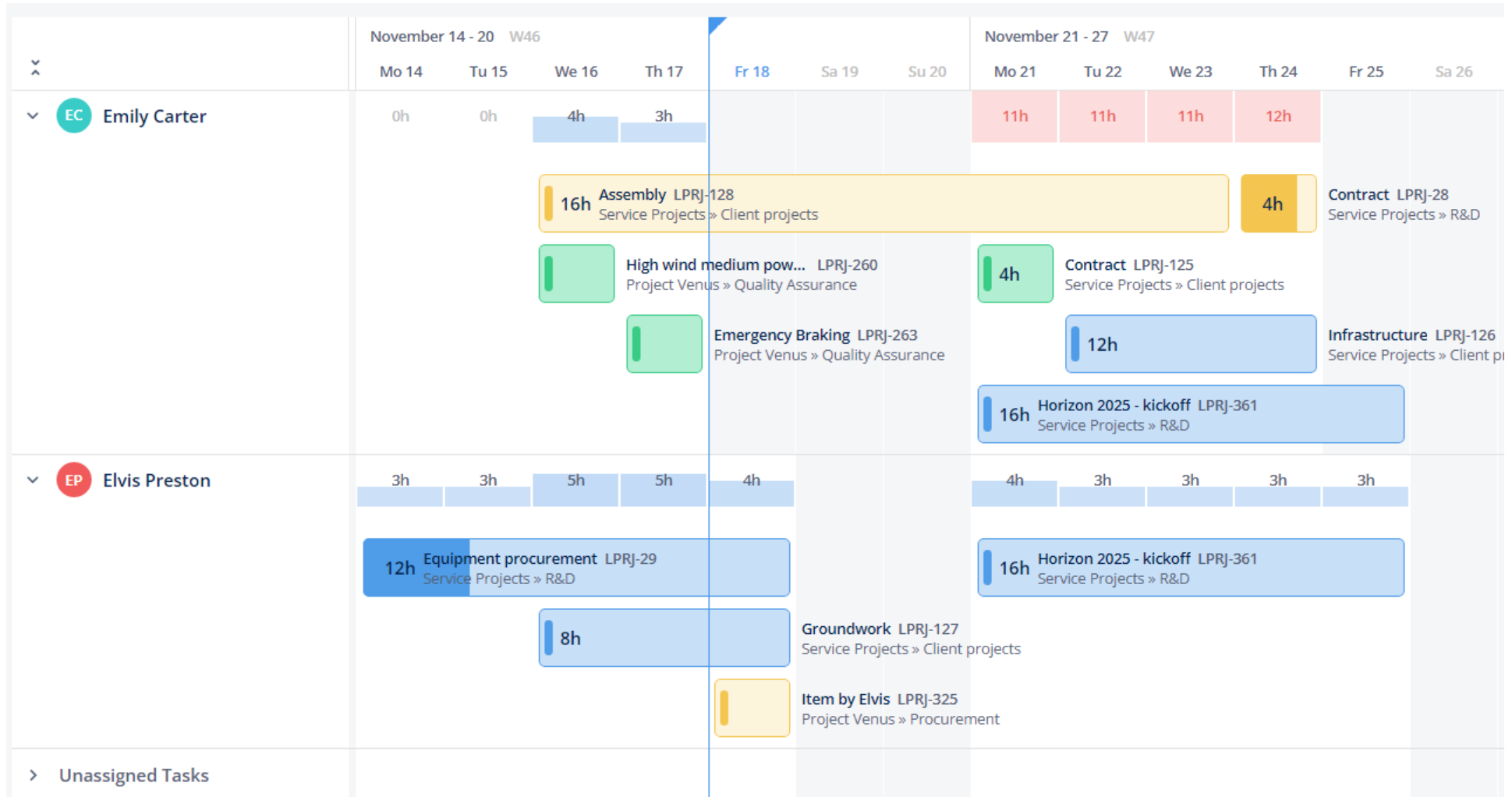
The Kanban board is organized into four columns:

- Planned (3/5):** Contains two task cards. The top card is 'Design and materials' (ID 12347, 0/2 sub-tasks, DT assignee) with sub-tasks 'First draft' and 'Feedback and alternatives'. The bottom card is a placeholder with a plus sign.
- In Progress (2/2):** Contains two task cards. The top card is 'Establishment of Company's New Headquarters' (ID 12345, AK assignee) with a plus sign below it. The bottom card is 'Branding for the new product line' (ID 12346, ML assignee) with a plus sign below it.
- To Do:** Contains three task cards. The top card is 'Furniture and necessary equipment' (ID 12356). The middle card is 'Final Arrangements and decoration' with a blue checkmark button being clicked by a mouse cursor, and icons for calendar, tag, chat, and user. The bottom card is 'Review branding for previous lines' (ID 12355) with a plus sign below it. The bottom-most card is 'Branding proposal for the new line of products'.
- Completed:** Contains one task card 'Basic layout schematics' with a 'Completed' status indicator.

Teamhood Gantt chart for project planning



Align your team and resources across different projects

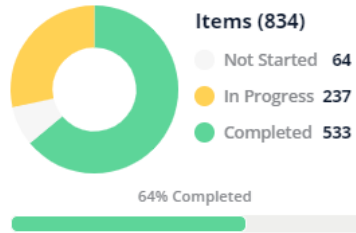


Spreadsheet-like lists for data capture and calculations

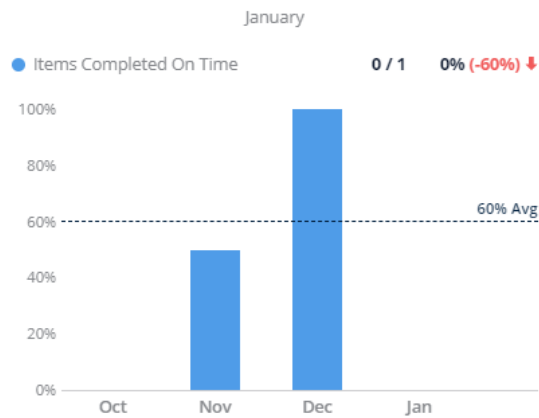
		Impact	Confidence	Effort	Timeline	Budget	...
+ Add Row							
▼ Strategic Projects							
✓	New digital product line	High	High	High	2022 Q2	\$ 550 000	
✓	Partnerships program Westwind Inc.	Low	Medium	Medium	2023 Q1	\$ 5 000	
✓	E-commerce shop as a sales channel	Medium	Medium	High	2022 Q3	\$ 100 000	
+ Add Item						\$ 655 000	
▼ Smaller initiatives							
✓	Employer branding 2025	Medium	High	Low	2024-2025	\$ 50 000	
✓	Professional certifications in engineering teams	Medium	High	Low	2023	\$ 150 000	
✓	Blue Ocean - environmental support	Medium	High	Low	2022 Q2	\$ 50 000	
✓	Adjacent market offices in EMEA	High	Low	Medium	2023 Q4	\$ 300 000	
✓	Christmas campaign Promotion Marketing	Low	High	Low	2021 Q4	\$ 20 000	
✓	Easter campaign Marketing	Low	High	Low	2022 Q2	\$ 20 000	
+ Add Item						\$ 590 000	
▼ For evaluation							
✓	Octo-power product line						
✓	SMB go to market						
✓	Customer satisfaction and NPS						
+ Add Item							
Grand Total:		-	-	-	-	\$ 1M	

Flow metrics for performance and improvements

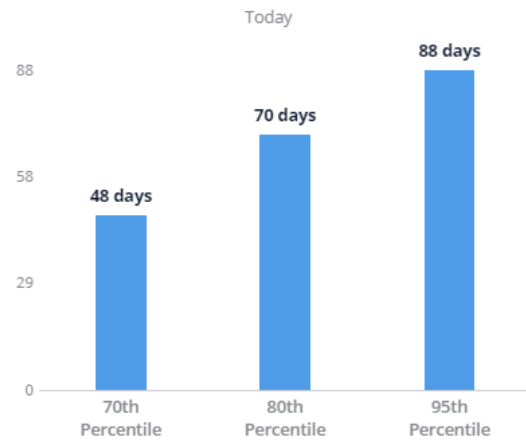
Total progress ?



Items completed on time ?



Items age in progress ?



Actionable items ?

Items Blocked

V2DE-2443 Allow user to remove / deactivate u... MR

Items Overdue

No Actionable Items

Items aging in progress

100 days V2DE-1945 Make HandleInternal method private a...

100 days V2DE-1952 Do not send commands to the back... DB

98 days V2DE-1948 Ability to change first name/last name

98 days V2DE-1947 User preferences

98 days V2DE-1949 Ability to change password

Show More Items

Why Teamhood?

10+

More than 10 years of experience creating project management tools.



Cost of work management can be decreased at least 50% when using Teamhood.

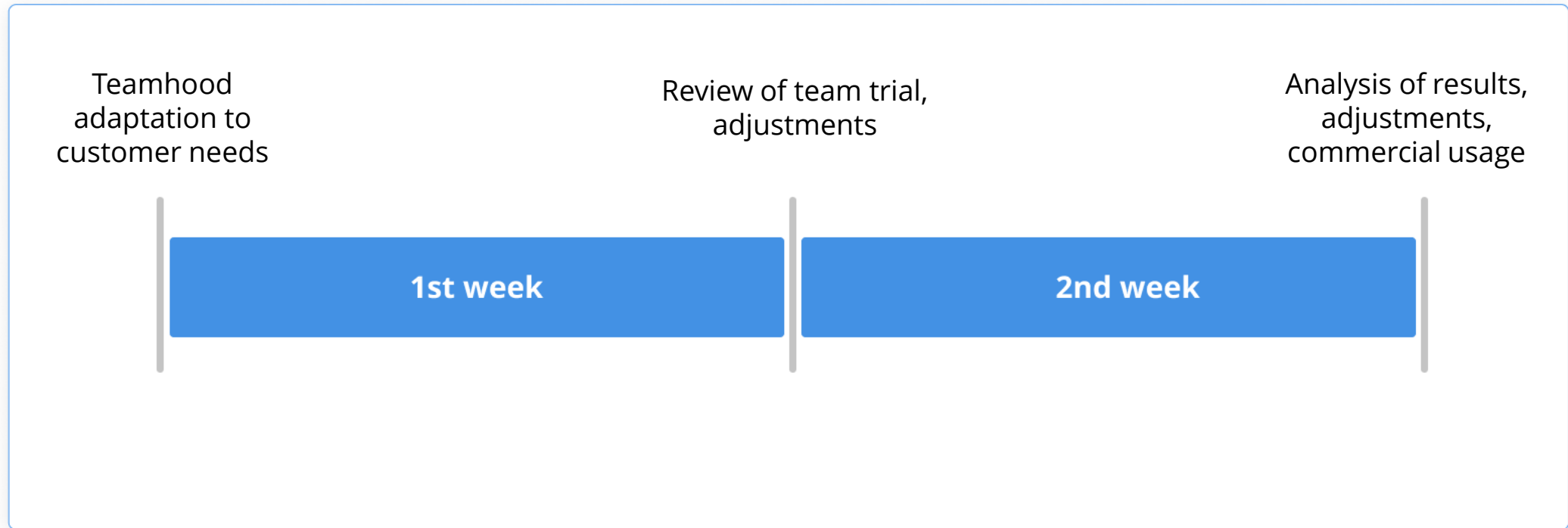


Security – full isolation per customer, GDPR compliance.



Support and trainings – we go extra mile to make sure our customers succeed.

Why Teamhood?



Included 2 week "on-boarding" methodology

Tailored for champions!

Consultations: <https://teamhood.com/meetings>

Contact us: hello@teamhood.com

Try now: <https://teamhood.com>

