



# AI VIRTUAL ASSISTANT

New Ocean Information System

---

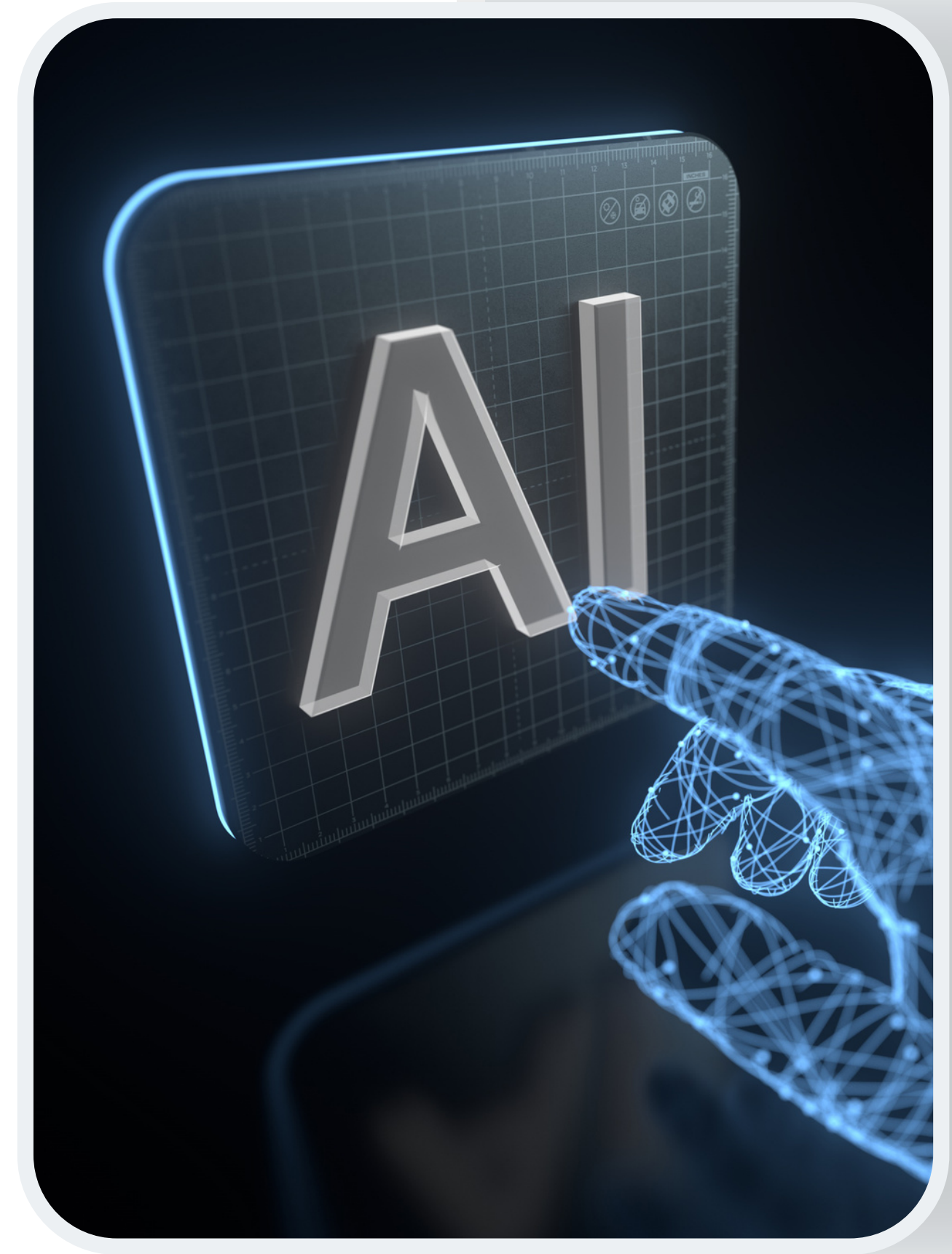


# Contents

- Overview
- Benefits
- Technical Solutions
- Use Cases
- Proof & Statistics
- Roadmap to Implement
- At a glance

# Overview

We utilized **OpenAI's powerful GPT models** to create a robust and versatile Chatbot - an effective generative AI Virtual Assistant. Beyond mastering natural language processing, our AI virtual assistant is your **go-to for seamlessly automating multiple daily office and manufacturing tasks, elevating efficiency and productivity to new heights.**





## BENEFITS

---

Our AI Virtual Assistant excels in **versatility, addressing a broad spectrum of topics with a wealth of knowledge from the internet or a provided knowledge base.**

It is a powerhouse for **customer service tasks**, deftly handling user queries about company services, conducting efficient product searches to meet customer needs, ensuring a seamless customer experience.

Our system boasts **swift data analysis, delivering instant results from designated datasets for prompt responses to user queries.**

We can **seamlessly integrate** the AI virtual assistant into websites, MS Teams, Facebook Messenger and many other platforms.

And much more.



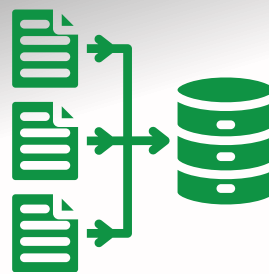
# TECHNICAL SOLUTIONS

Empowered by the effective combination of Azure OpenAI, other Azure services, and our algorithms, our AI virtual assistant excels in:



## DIVERSE FILE TYPE SEARCH

Our algorithm seamlessly navigates through various file formats to provide accurate answers.



## DATABASE INTEGRATION

We can integrate with databases, enabling us to retrieve answers or perform data analysis through interactive chatting.



## IMAGE EXTRACTION

Unleashing the capability to extract information—from content to objects and underlying meanings—from images.



## SECURITY AND DATA INTEGRITY

Our system is smartly designed to ensure the highest level of protection for security and data integrity.



EXPERIENCE

## USE CASES

---

Transform your workflow effortlessly through natural conversation, automating tasks in both HR/Admin/Office and Manufacturing environments:



### HR/ADMIN/OFFICE

**Intelligent Information Hub:** Access company processes, policies, safety guidelines, and more seamlessly.

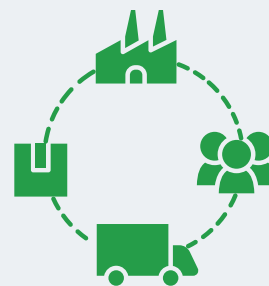
**HR Management:** Book/cancel leave, inform holiday durations, manage HR tasks, etc. efficiently.

**Event Coordination:** Easily book meetings, manage appointments, and organize events.

**Employee Onboarding:** Streamline the onboarding process for new employees.

**Document Organization:** Efficiently organize, retrieve documents, maintain version control, and more.

**Manager assistant:** Manage employee leaves, announce news to all staff, and more.



### MANUFACTURING

**Purchase Order Tracking:** Seamlessly manage and track purchasing orders.

**Production Monitoring:** Keep track of machine status, product status, output volume, and more.

**Shift Transition Management:** Organize, inform, and remind about next shift notes seamlessly.

**Supervisory Alerts:** Receive notifications on high-risk products, idle tools, long downtime machines, and more.

**Warehouse Optimization:** Track and receive suggestions on item arrangement in the warehouse, etc.



# PROOF & STATISTICS

---

## Improved Efficiency with AI Virtual Assistant:



### STREAMLINED SEARCHING

Instead of searching multiple fields simultaneously, via engaging in natural chat can result in a **remarkable 90% time reduction.**



### EFFICIENT HR TASKS

By leveraging the system, we streamline HR activities, **reducing time by 50%.**



### SIMPLIFIED DATA ANALYSIS

Simplified Data Analysis: Managers can obtain direct summarizations, eliminating the need for manual data work and achieving an impressive **time reduction of over 80%.**

**In summary, our system enhances the efficiency and speed of daily office, manufacturing, and customer service tasks.**

# ROADMAP

**Consulting**  
1 - 2 weeks  
Define project scope & objectives  
High level design  
Project planning  
Cost and timeline estimation  
Proof of concept demonstration



**Development**  
1 - X weeks depending on number of features  
Environment setup  
Detailed design  
Development  
Code reviews  
Documentation



**User Acceptance Testing (UAT)**  
2 - X days depending on the number of features  
Test case design  
Test execution  
Defect resolution  
Documentation update



**Deployment**  
1 - 5 days  
Environment preparation  
Data migration  
Backup  
Deployment execution  
Verification and testing



**Monitoring and enhancement**  
Post-Deployment Checks  
Post-Deployment Support  
Project enhancement (based on user needs)





# AT A GLANCE

---

## Customer Challenges



Prolonged  
response times



Lack of personalized  
assistance



Reduced engagement



Impact operational  
efficiency



Limited accessibility  
to information



Missed opportunities  
for automation



**AT  
A GLANCE**

---

# AI Virtual Assistant help your business



- 1 Cost Effective
- 2 Concurrent Services
- 3 Automation
- 4 Better Communication
- 5 Analyzing data swiftly
- 6 Security and data integrity





# AT A GLANCE

## Use Cases

Our AI Virtual Assistant is adaptable to diverse industries and can be customized to meet individual client preferences.

It excels in streamlining customer support, boosting user engagement, and optimizing workflow processes, offering a tailored solution for each unique business need



### Office Assistant



- Intelligent information hub
- HR tasks
- Event management
- Employee Onboarding
- Document management
- Manager assistant

### Manufacturing Assistant

- Purchasing Order
- Production management
- Shift transition assistant
- Supervisor assistant
- Warehouse space assistant

### Sales Assistant

- Potential customer identification
- Customer follow up
- Customer tracking
- Appointment scheduling
- Language translation

### Customer Services Assistant

- User help system
- Product recommendation
- Automated customer support
- Order management
- Feedback and surveys
- Social media monitoring



# CONTACT US

---

Microsoft  
Partner



Gold Application Integration  
Gold Data Analytics  
Gold Application Developments  
Gold Cloud Platform



Data & AI  
Azure



BRONZE  
System Integrator

A ROCKWELL AUTOMATION PARTNER



**DATALOGIC**  
ISV PARTNER

Get in touch if you would like to discuss how New Ocean IS can assist you with your technology journey.

E: [info@nois.vn](mailto:info@nois.vn)

P: (+84) 28 6681 0782

W: [www.nois.vn](http://www.nois.vn)