

KAISPE IoT Portal

Asset Monitoring and Maintenance Portal



KAISPE IoT Portal is a fully functional web portal that helps users manage IoT devices, design telemetry rules, view device notifications and asset predictive maintenance

What is KAISPE IoT Web Portal?

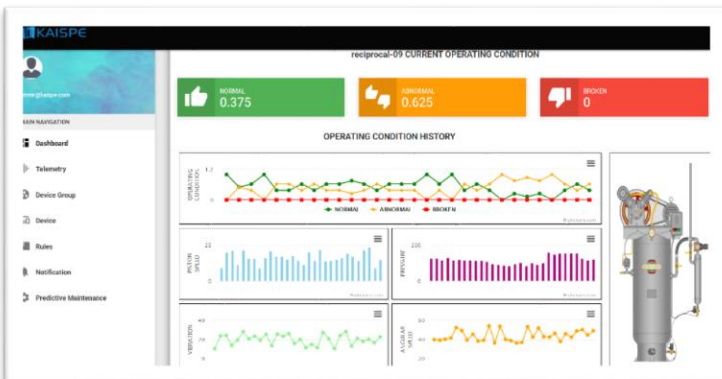
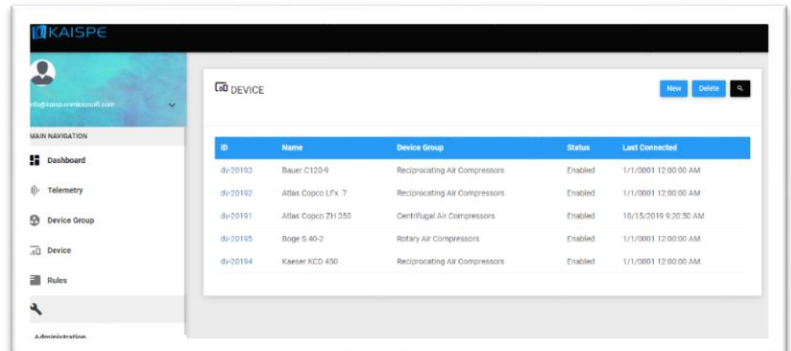
The portal has been developed for users who want to have a single place to manage IoT devices connected with an IoT platform like Microsoft Azure IoT, define telemetry for a device or group of devices and design rules for the telemetry data.



Why customers use KAISPE IoT Web Portal

- Single place to manage various types of IoT devices
- Group devices and define telemetry
- View device and IoT platform messaging
- Simple to complex Rule building on telemetry and view notifications against rule violation
- Asset Maintenance functionality

The portal is highly flexible to get connected with a number of IoT platforms. It also has a dashboard that provides KPIs and charts about device to platform messaging, online vs. offline devices etc. Users can group relevant devices into device groups, define telemetry and associate with device groups. They can then design rules on telemetry that the IoT platform can then evaluate for any violations. The portal also provides rule based and machine learning based predictive maintenance for assets. It uses Azure ML to apply machine learning algorithm on telemetry data.



Our Solution

- Developed on a flexible architecture to get integrated with a number of IoT platforms like Microsoft Azure, Amazon IoT etc.
- Provides device messaging and other useful with a pre-configured dashboard
- Separate dashboard for Predictive Maintenance