



**ETON**  
SOLUTIONS

## **AtlasFive®: Securing Your Family Office Infrastructure**

*When you choose our family office solution,  
you get more than a family office application.  
You get peace of mind.*

# More than a family office application —A secure, integrated solution

Eton Solution's family office platform is more than just features and functions. The AtlasFive platform provides a secure family office infrastructure to support your certified operations. Simplifying processes while ensuring industry-certified cybersecurity, AtlasFive's architecture, hosted on Microsoft Azure, allows clients to create a flexible operational infrastructure while capitalizing on Eton Solutions' process maturity and certifications.

*The end result: An elegant, digital family office platform that provides adaptable world-class operations and cybersecurity to meet the individual needs of each client.*



**SOC 2  
Certified**



**ISO 27001  
Certified**



**SSO and  
MFA**



**Cloud Native  
Architecture**



**Disaster  
Recovery**



**24x7  
Monitoring**





## 8 Key Benefits

Implementing AtlasFive into your family office operations gives you access to a virtual cybersecurity team. You get many the benefits of having a CyberSOC without the overhead that an experienced security team typically demands while having your firm's infrastructure and processes running on an integrated platform.

- 1 Flexible Operational Infrastructure:** AtlasFive provides a versatile operational infrastructure, adjustable to your unique office requirements. Our offerings range from fully managed services to standalone systems, all designed to enhance security and optimize workflow processes.
- 2 Pro-active 24x7 Monitoring:** Benefit from round-the-clock security monitoring, which includes immediate responses to any incidents, providing peace of mind.
- 3 Disaster Recovery and Business Continuity:** World-class provisions ensure minimal downtime and productivity loss during cybersecurity incidents, fostering a reliable operating environment for your business.
- 4 Integrated Single Sign-On (SSO) and Multi-Factor Authentication (MFA):** This integration bolsters security and enhances user convenience by reducing unauthorized access risks, ultimately boosting productivity.
- 5 Inheritable Maturity:** Leverage a mature cybersecurity program for proven, robust security measures. Minimize risk, enjoy peace of mind, and comply with emerging security regulations.
- 6 Cloud Native Architecture (CNA):** CNA enables flexible, scalable, and efficient operations. Reduce IT costs while maintaining high data protection standards with cloud-based security.
- 7 Trusted Security and Computing Infrastructure:** Harness an established security infrastructure to benefit from time-tested security measures, reducing threat exposure and enhancing operational efficiency.
- 8 Your Control, Your Data:** Retain full control over your data with features that enhance privacy and allow for customized security measures aligned with your specific needs. Provide your own encryption key if you need additional assurance of control.

---

The effectiveness of a cybersecurity program isn't just about preventing threats, but also about how it can **add value to your family office as a whole.**

# Reimagine security.

By partnering with Eton Solutions, you can elevate the level of service you are able to provide without compromising on industry non-negotiables such as disaster recovery, business continuity, and data security. Streamline your office and take advantage of our cybersecurity experts so your staff can add value in their own areas of expertise.

---

## Flexible Operational Infrastructure

AtlasFive's operational infrastructure is inherently **flexible** so that you can adapt it to work for your office. Whether you need **complete managed services** provided entirely by our experts, a **standalone system** that you manage and operate yourself, or something in between, we'll work together to structure a secure solution that **optimizes your workflow processes**.

## Disaster Recovery and World-Class Business Continuity

In today's fast-paced global financial world, our clients can't afford to lose valuable data or have their services "offline" for any length of time. We proactively plan for disaster recovery with **incremental backups every five minutes** and full backups daily. Additionally, we are hosted globally in multiple countries with options for customers to have **replicated hot-hot instances** in another zone or country. This hot-hot configuration means there's always a server ready to act as backup should the need arise, which translates to less downtime for your family office. The families you serve can rely on business continuity with AtlasFive.

## Pro-active 24/7 Monitoring by the Security Operations Center (SOC)

Our SOC provides **round-the-clock monitoring** for your AtlasFive system. It **continuously analyzes network traffic, identifying anomalies, potential threats, and malicious activities**. We monitor and analyze logs from various systems and devices to **detect security incidents and suspicious behavior**. Our team manages and responds to endpoint threats, including malware and unauthorized access attempts. We **stay updated on emerging threats** through external sources, incorporating them into our monitoring and response strategies. In the event of security incidents, we **coordinate with stakeholders, conduct investigations, and implement necessary remediation measures**. Rest assured, we ensure compliance with regulatory requirements and industry standards through continuous monitoring and reporting.



## Data Encryption For Added Security

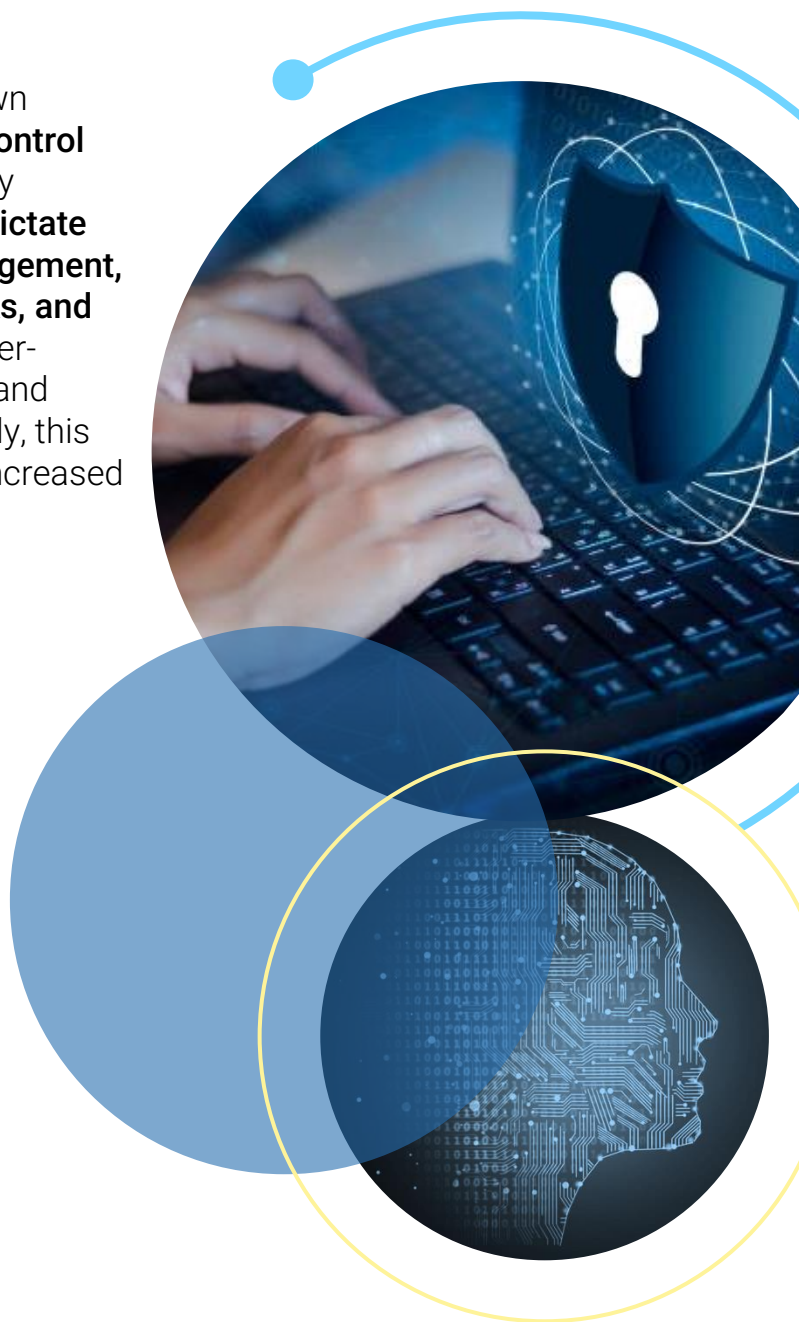
All your valuable data and documents are protected through robust encryption measures. This ensures that sensitive information remains confidential and shielded from unauthorized access. By encrypting your data, you gain a myriad of advantages. Firstly, it **safeguards against data breaches and cyber threats**, providing peace of mind. Secondly, it **ensures compliance with industry regulations**, bolstering trust and reputation. Lastly, **encryption enhances data integrity, preserving its accuracy and reliability**. Experience the power of encryption and elevate your data security to newer heights with our AtlasFive solution.

## Bring Your Own Key (BYOK)

With AtlasFive, you can bring your own encryption key (BYOK), **reinforcing control and ownership over data security**. By providing their own key, customers **dictate data access, enabling stricter management, mitigating unauthorized access risks, and ensuring compliance**. Using customer-supplied encryption keys instill trust and confidence in data security. Ultimately, this preference aligns with the need for increased data sovereignty and protection.

## Integrated SSO and MFA

AtlasFive's user management features allow clients to use their own **identity management platform and policies with single sign-on (SSO) and multi-factor authentication (MFA) capabilities**. This integration enables you to continue using the user management applications your staff and families are familiar with, while our row-level security enforces a more granular data visibility control that supports **entity-level visibility**.



## Inheritable Maturity

Clients inherit AtlasFive's **infrastructure security maturity and certifications** and can utilize it for positioning with their own clients. This maturity gives client assurance that security processes have been tested and certified against industry standards.

## Increased Resilience with Cloud Native Architecture (CNA)

AtlasFive clients benefit from the **dynamic scaling of computing resources** that can match varying seasonal demands. This enables them to match varying seasonal demands and easily handle more resource intense periods such as month-end or quarter-end closings, which typically demand more resources than standard daily processes. Regular patch management is conveniently handled by Azure, ensuring your system stays secure and updated. CNA also provides **improved reliability and reliability**.

## Trusted Security and Computing Infrastructure

Our platform is trusted by large global financial institutions and features world-class security. We have a proven record of business continuity capabilities with **built-in backup, recovery, and replication**. AtlasFive is **SOC2 and ISO27001 certified**, and our team works continuously to ensure our infrastructure adheres to **ISO27701, GDPR, CCPA, and OSPAR standards**.

## Secure AtlasFive Code Development Supply Chain

Secure Code Supply Chain guarantees the safety and robustness of your software development. Leveraging **Software Composition Analysis (SCA), Static (SAST), and Dynamic Application Security Testing (DAST)**, we reinforce every phase from code creation to deployment, ensuring resilient and reliable AtlasFive platform.

---

## When you choose Eton Solutions and AtlasFive

You're getting more than the most advanced family office software on the market—you're getting a partner and the support of a team of experts in cybersecurity, data governance, and business continuity. We operate as your trusted CyberSOC for your AtlasFive solution, so you don't have to build one internally. Take advantage of our infrastructure and data security experience and focus on the families you serve.

# Achieving Big Bank Cybersecurity Without The Big Bank Budget:

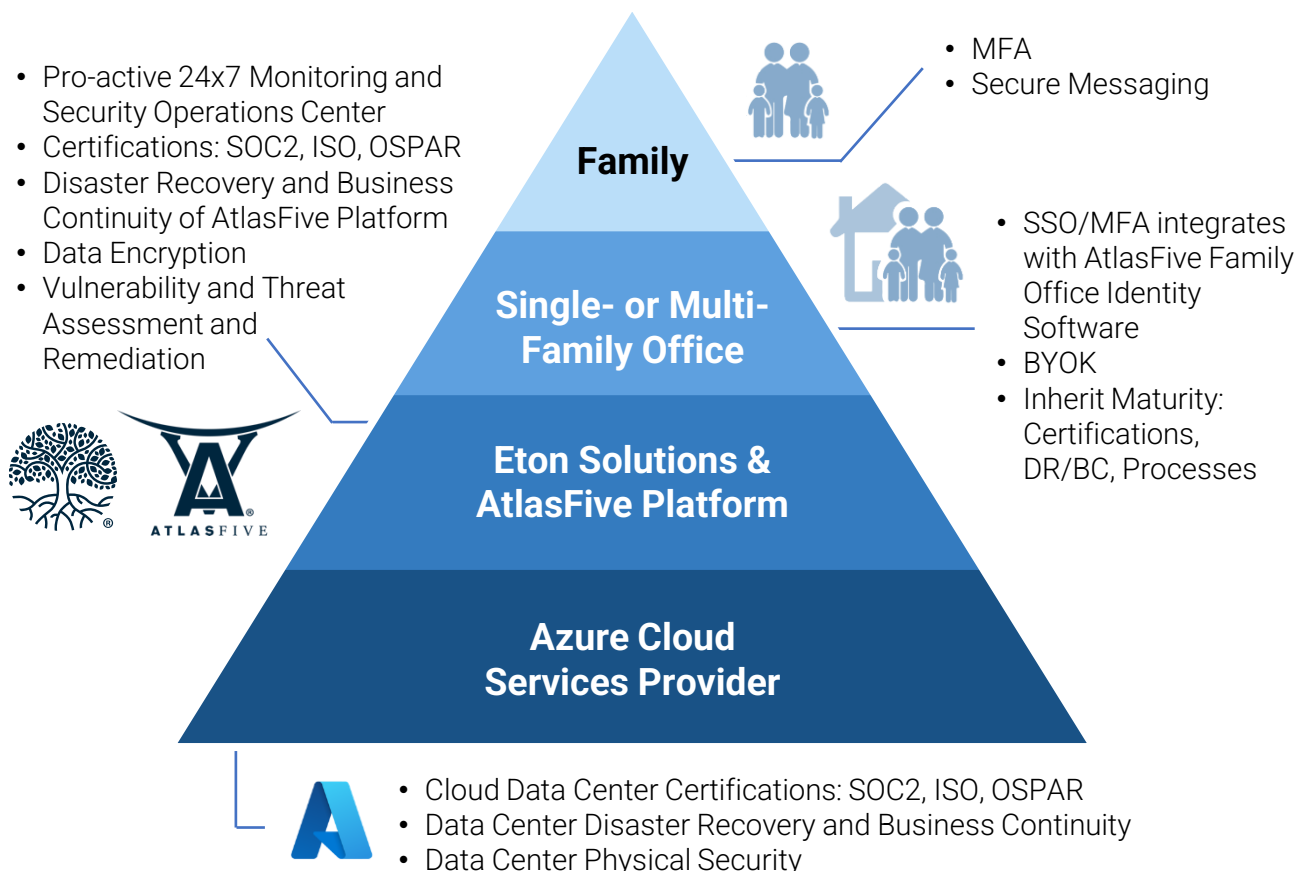
## How We Do It?

Achieving top-tier, bank-level data security often appears to demand an exorbitant budget, that most family offices are not able to match.

By utilizing the advanced cybersecurity infrastructure of Microsoft Azure, combined with the security governance processes provided by Eton Solutions, we deliver a robust, secure, and compliant data protection platform.

This platform rivals the best cybersecurity infrastructures of large financial institutions, offering wide range of security tools, AI-driven threat intelligence, and is compliant with industry-leading certifications.

Together, they form a fortress of security around your data, without you having to establish this infrastructure and cybersecurity processes yourselves.



**Transform the infrastructure of your family office.  
Reimagine what it feels like to be secure.**

*Ready to advance to the most secure family office software?*

✉ [info@eton-solutions.com](mailto:info@eton-solutions.com) 🌐 [www.eton-solutions.com](http://www.eton-solutions.com)



**ETON**  
SOLUTIONS