

Power BI Next Level

TRAINING WORKSHOP



DATA BEAR

Be Data Savvy



Empower Your Organisation Through Compelling Data Story-Telling



Access the information you need when you need it through visually stunning dashboards and reports

Be empowered to drive effective business change through data driven solutions. Create interactive reports, discover insights and share your findings throughout your organisation.

What to Expect?

The Power BI Next Level course is designed for data analysts and report authors who have completed our Power BI Foundations course and want to further enhance their skills in Power BI. This instructor-led, 2-day course delves into next level concepts and techniques that empower learners to create highly effective reports, analyse complex data, and optimise their Power BI workflow. Participants will gain in-depth knowledge of that will empower them to take their Power BI reports to the 'Next Level'

Duration:

Two days (14 hours)
9:30 am - 4:30 pm
(each day)

Prices:

Public Live Online Class
\$1,130 per delegate

Private Live Online Class
\$1,510 per delegate

What do I need for Remote Online Training?

- [Windows OS](#) Laptop with a recent version on Power BI Desktop installed.
- Good Internet connection
- A second screen or an additional device (e.g. a tablet)
- [A headset or built-in speakers and](#) microphone



Contact Us:

+44 20 8720 6880

training@datbear.com

Discounts offered when more than one books

[Click Here to Book Online](#)

Objectives



Learn:

- Next Level Analytics and What-if Analysis
- Enhanced Data Visualization and Storytelling
- Calculations with DAX
- Filter Contexts with DAX
- Dynamic Visuals and Bookmarking
- Next Level Transformations and Query Techniques
- Live Connect and External Data Integration
- Cloud Service Admin & Next Level Dashboards
- Next Level Security and Governance
- Best Practices and Future Directions

Who is it For?



- Those who have completed the Power BI Foundations course and want to advance their skills.
- Professionals already working with Power BI who want to gain deeper insights into next level concepts and techniques.
- Individuals seeking to enhance their ability to create impactful reports, perform complex data analysis and optimise their Power BI workflow.

About us

As a Microsoft Gold Partner in Data Analytics and a Power BI partner, with a vertical focus on helping business become more data efficient through Power BI training and consulting, Data Bear has an established record of empowering organisations with the skills and tools needed to drive their business further. Using latest technologies and best practice, the Data Bear team is dedicated to providing training and solutions that ultimately save time, increase profits and reduce stress.

Course Content

Day 1



Review and Optimisation of Core Concepts

- Refreshing data import and connection techniques
- Data modelling for improved performance
- Techniques for creating impactful reports
- Exploring cloud features and functionalities for collaborative workspaces, dashboards, and apps

Enhanced Data Visualisation and Storytelling Techniques

- Optimizing KPI cards for effective data communication
- Selecting appropriate visuals based on context
- Enhancing reports with tooltip report pages
- Implementing drill-down functionality for deeper insights
- Using visuals to represent complex data relationships
- Adding analysis features to visuals for data exploration
- Grouping and binning data to uncover patterns and trends

Calculations with DAX

- Mastering iterator functions for complex calculations
- Referencing inactive relationships in the data model
- Exploring the capabilities of the HASONEVALUE function
- Implementing index functions for baseline comparisons
- Utilising offset functions for relative value comparisons
- Window functions for running totals and moving averages

Next Level Analytics and What-if Analysis

- Concepts and applications of what-if parameters
- Building what-if analysis reports for scenario planning
- Utilising numeric parameters for dynamic slicing
- Creating calculated tables to support complex calculations
- Capture Slicer Selections with DAX
- Switching comparison metrics for dynamic insights
- Utilising field parameters for flexible analysis:
- Switching between multiple measures
- Switching between multiple dimensions

Filter Contexts with DAX

- Unravelling the DAX filter context
- Dynamically modifying the filter context with 'CALCULATE'
- Manipulate filter context:
 - ALL
 - ALLEXCEPT
 - VALUES
- Leveraging the 'FILTER' function
- Implementing Time Intelligence functions
 - 'TOTALYTD'
 - 'SAMEPERIODLASTYEAR'
- Streamline DAX with Variables
- Employing variables for DAX function debugging

Course Content

Day 2



Dynamic Visuals and Bookmarking

- Implementing dynamic binning techniques
- Adding dynamic subtitles to reports
- Creating dynamic headers for interactivity
- Harnessing the power of bookmarks
- Switching between chart types dynamically
- Adding bookmark links to buttons, shapes and Images
- Creating report menu pages with bookmarks
- Consolidating report views onto a single page
- Exploring the Q&A Visual (natural language queries)
- Assign page to a Q&A for targeted and contextually

Live Connect and External Data Integration

- Connecting to APIs for real-time data integration
- Using Power BI in other Apps
- Accessing internet databases for enriched data analysis
- Connecting to Power BI Data Sets (Live Connect)
- Power Query in the Cloud - Self-Service Data Prep
- How Power BI Data Flows work
- Connecting to and Managing Power BI Data Flows
- Using OneLake and Power BI Datalakes

Next Level Security and Governance

- Implementing dynamic row-level security
- Mapping user IDs to the data model for personalized access
- Utilising DAX functions for returning usernames
- Assigning users to Power BI security roles for controlled access

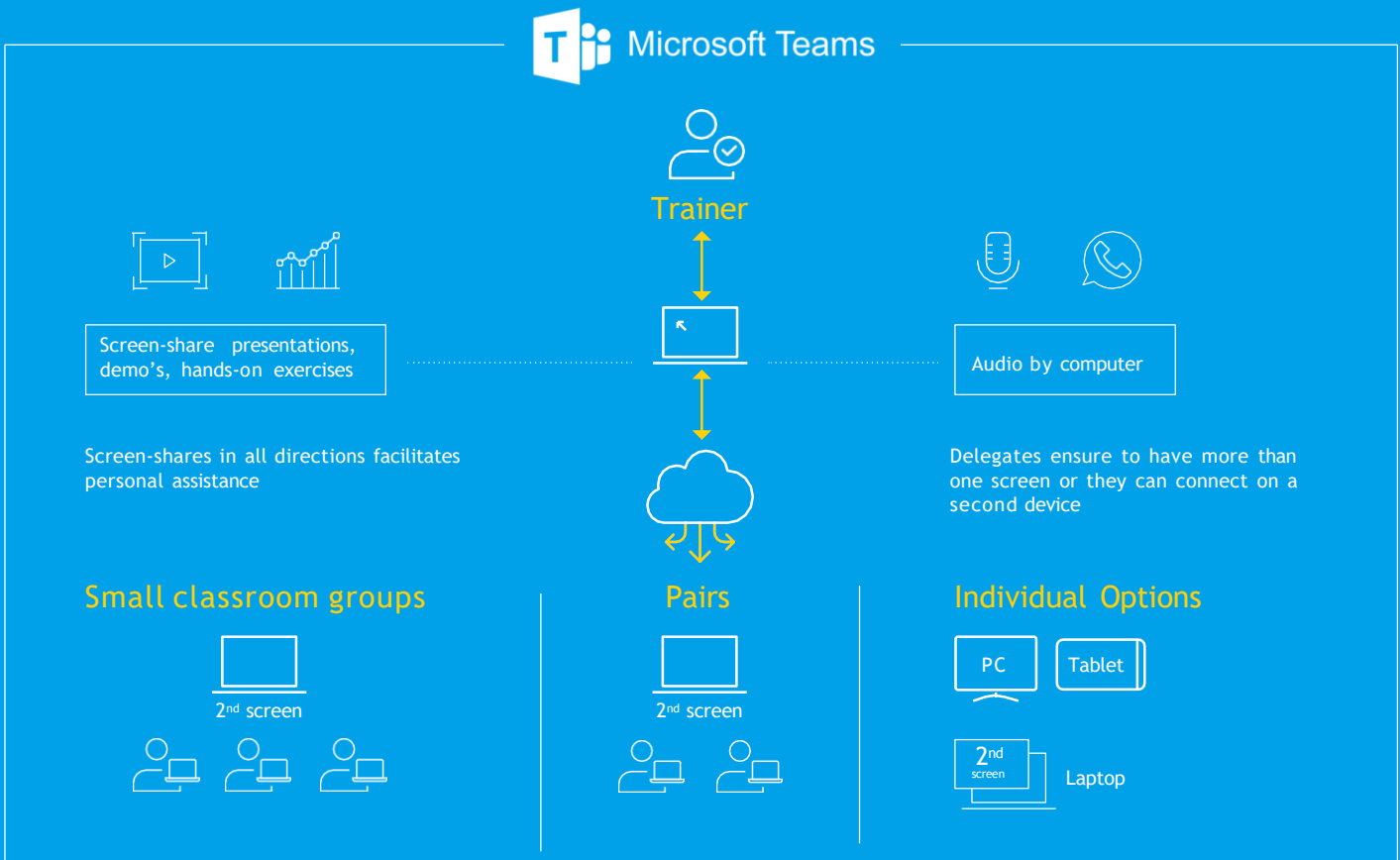
Data Transformations and Query Techniques

- Cloud based query building best practices
- Efficient data transformations
 - conditional columns
 - columns from examples
- Combining files from a folder to streamline processes
- Referencing queries for complex data manipulations
- Overcoming Layout Limitations with custom mapping
- Building a star schema from a flat file for optimised models
- Handling multiple fact tables for comprehensive analysis

Cloud Service Administration and Next Level Dashboards

- Utilizing on-demand data refreshing
- Scheduling data refreshes to automate data updates
- Managing workspaces, users, and permissions
- Creating next level dashboards with snapshot capabilities
- Monitoring usage metrics

Remote Live Online Training



- Using Microsoft Teams, a video conference with screen and audio sharing will be made available for all delegates
- You can connect using Microsoft Teams, or if you don't have access to Teams, you can connect through any internet browser
- The trainer's screen and audio will be shared with all delegates
- If needing assistance, you can share your screen with the trainer
- At any time during the training you can unmute your microphone to ask questions, or for further clarification
- Allowing for simultaneous display of both the trainers screen and your own, it is highly recommended that you have either a second screen or an additional device, e.g. 10"+ Tablet.
- All required training files and the training manual will available for download through Teams

Join Using Two Screens

To ensure efficiency, the use of **two screens** is required. One of your two screens displays the trainer's presentation. Having two screens empowers you with a clear view of what the Trainer is explaining and your own working examples as you follow along.



Trainer's Screen

One screen shows a clear and constant view of the Trainer's screen

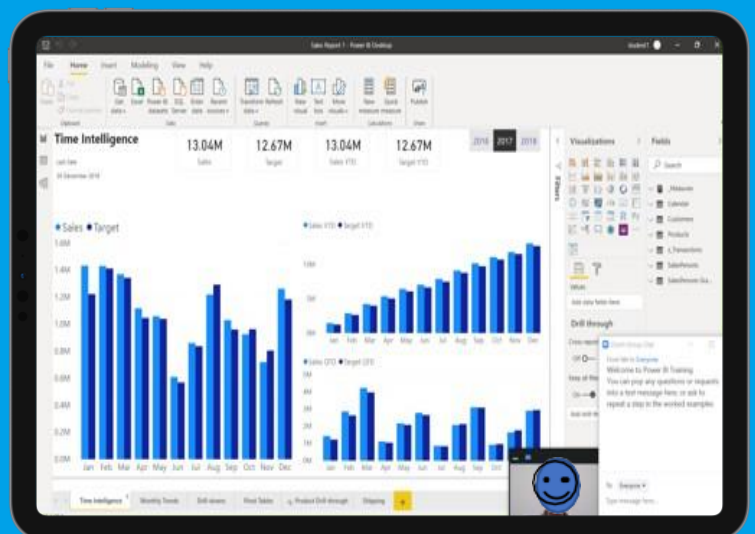


Screen showing your work

Use your second screen to display your work as you follow along through the exercises.

or Join on a 2nd device

If you don't have 2 screens, to constantly display the trainers screen, you can join the Trainers meeting on a second device, for example a tablet. You can then use your laptop or PC to do the worked examples as you follow along from the second device.



Why Choose Data Bear?

- ✔ Microsoft Gold Partner
- ✔ Training Focuses on Best Practices
- ✔ Step-by-step digital manual provided
- ✔ Additional Power BI Helper Files Provided
- ✔ Over 50 5 Star Google Reviews
- ✔ After Training Support Available



Vertical Focus

We're a Power BI centric company, and a Microsoft Power BI Partner, with a vertical focus on empowering organisations with Power BI training and solutions that produce results. Our passion is to help organisations become more 'Data Savvy'.



Deep Domain Experience

Having helped numerous organisations overcome the obstacles to enhanced data efficiency and empowering them with the skills to adopt a 'data culture', the Data Bear team has many years of 'real life' experience in the 'BI - trenches'. We don't just show you what all the various buttons and knobs do. You can learn that from documentation. Drawing on a wealth of experience, based on developing and deploying numerous best practice BI solutions globally, we'll teach you how to build a robust Power BI solution from the ground up, ensuring that, going forward, your team has the best practice foundation to continue the process of getting the right data into the right hands.



Long-Term Partnership

The process of using Power BI to ensure organisational value is an ongoing learning journey. To ensure your team can overcome any obstacles or issues experienced after the training, we provide '**after training**' support packages. In this scenario, you can purchase a bundle of support hours to be drawn from as needed or we can provide support on a 'pay-as-you-go' basis. The '**pay-as-go**' offer is exclusive to organisations or individuals who have received training from us.



Quality

Quality Assurance – as a Gold Microsoft Power BI partner, we have insight to all new Power BI update roll outs and we ensure that all our training content and best practices taught are up to date with latest Microsoft releases and new technology offerings.



Training Locations

United Kingdom We offer regular Training courses in London and throughout the UK.

Remote Online Through live remote online training, we empower organizations globally, regardless of their geographical location.

[Click Here to Book](#)




DATA BEAR

Be Data Savvy



UNITED KINGDOM

 Suite 34, 67-68 Hatton Garden, London, EC1N 8JY

 (020) 8720 6880

 info@databear.com

