

PRODUCT BRIEF THE AUGMENTED & CONNECTED WORKER



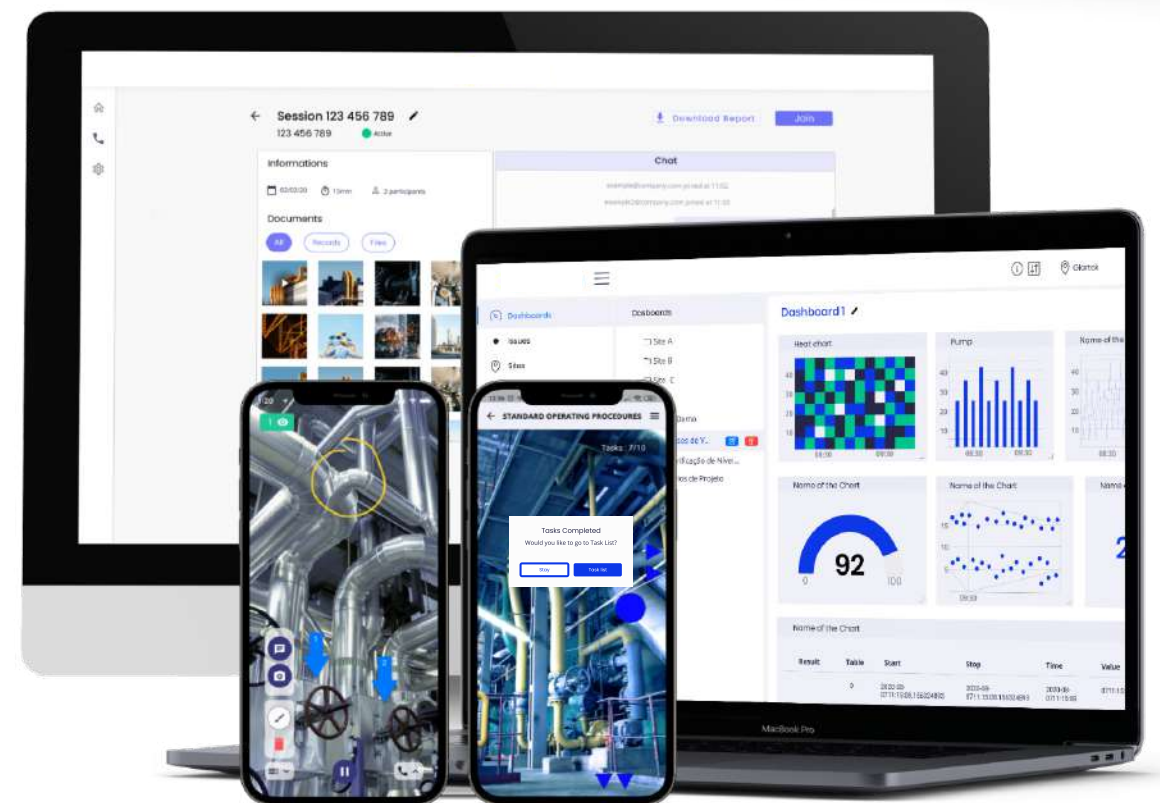
THE AUGMENTED & CONNECTED WORKER PLATFORM

Glartek is focused on the intersection between the Augmented Worker and the Connected Worker to create digital products that improve the work of frontline workers as well as their managers and executives.







Increasing competition, lack of autonomy of field workers and the use of outdated and complex processes are currently some of the main obstacles to competitiveness, efficiency and success of organizations working in the manufacturing industry.

With **Augmented & Connected Worker**, is possible to create a cycle of digitization, connected, and augmented execution with a continuous improvement mindset that allows to:

- End paper-based process
- Optimize management
- Save time and costs
- Empower your team




USE CASES & KEY FEATURES

 Digital Work Instructions	 Visual Remote Assistance	 Monitoring, Reports and Analytics
 Team and Task Management	 Training & Skills Management	 Knowledge & Document Management

- | | |
|---|---|
| <ul style="list-style-type: none"> ● Team Management <ul style="list-style-type: none"> • Customizable Attributes, Roles, Permissions ● Asset Management <ul style="list-style-type: none"> • Templates, Organizational Tree, Configurable Attributes ● Work Order Management <ul style="list-style-type: none"> • Customizable Data, Calendar, Planning Approvals, Assignments, Due Date, Notifications, On-demand and Schedule Work Orders and Tasks. ● Work Order Execution <ul style="list-style-type: none"> • Mobility Application, Augmented Reality Guidance, Offline Mode, NFC/QR code access, Time Tracking, Execution Approvals, Tracking ● Work Order Workflows <ul style="list-style-type: none"> • Templates, Instructions, Multiple Answer options, Conditional Tasks and Responses, Response Validation, Alarms and Alerts, Scored Responses ● Actions Management <ul style="list-style-type: none"> • Configurable States, Tracking by Site, Asset, Process, Task, Response, Assignee, Assignments, Due Date, Priority ● Inventory Management <ul style="list-style-type: none"> • Stocks, Warehouse, Tool/Materials | <ul style="list-style-type: none"> ● Skills Management <ul style="list-style-type: none"> • Skills Matrix, Training Programs, Assignments, and more ● Analytics <ul style="list-style-type: none"> • Customizable analytics, reports and dashboards in real time. ● Collaboration <ul style="list-style-type: none"> • Visual Remote Assistance, AR annotations, Chat, Knowledge and Document Management, Change Management, Notifications ● Enterprise Features <ul style="list-style-type: none"> • Multi-language UI, Nomenclature Customization, Audit Trail, Automation Rules, Centralized Authentication/SSO, Integrations ● Deployment <ul style="list-style-type: none"> • Geo-redundant Cloud Deployment, Hourly Backups, Business Continuity and Disaster Recovery Plan, On-premise deployment ● Support <ul style="list-style-type: none"> • Knowledge Base, Email, Tickets and Phone Customer Service, 8x5 Multilanguage, 24x7 Multilanguage, SLA |
|---|---|

PROCEDURES

 <p>Maintenance</p> <p>Preventive Corrective Autonomous</p>	 <p>Production</p> <p>Work Instructions Checklists Changeovers Metrics</p>	 <p>Safety</p> <p>LOTO Cleaning Routines Accident Handling</p>	 <p>Audit</p> <p>5S PDCA Inspections Preventive Audits</p>	 <p>Supply Chain</p> <p>Part picking Material Inspection Line Supply Waste control</p>	 <p>Assistance</p> <p>Problem Reporting Maintenance Repair Assistance Installations/setup</p>
---	--	--	--	--	---

6% Production increase due to a more efficient and safer team

0% Error rate is reduced to 0% directly impacting downtime

80% Full payback of the investment in the first year

INDUSTRIES

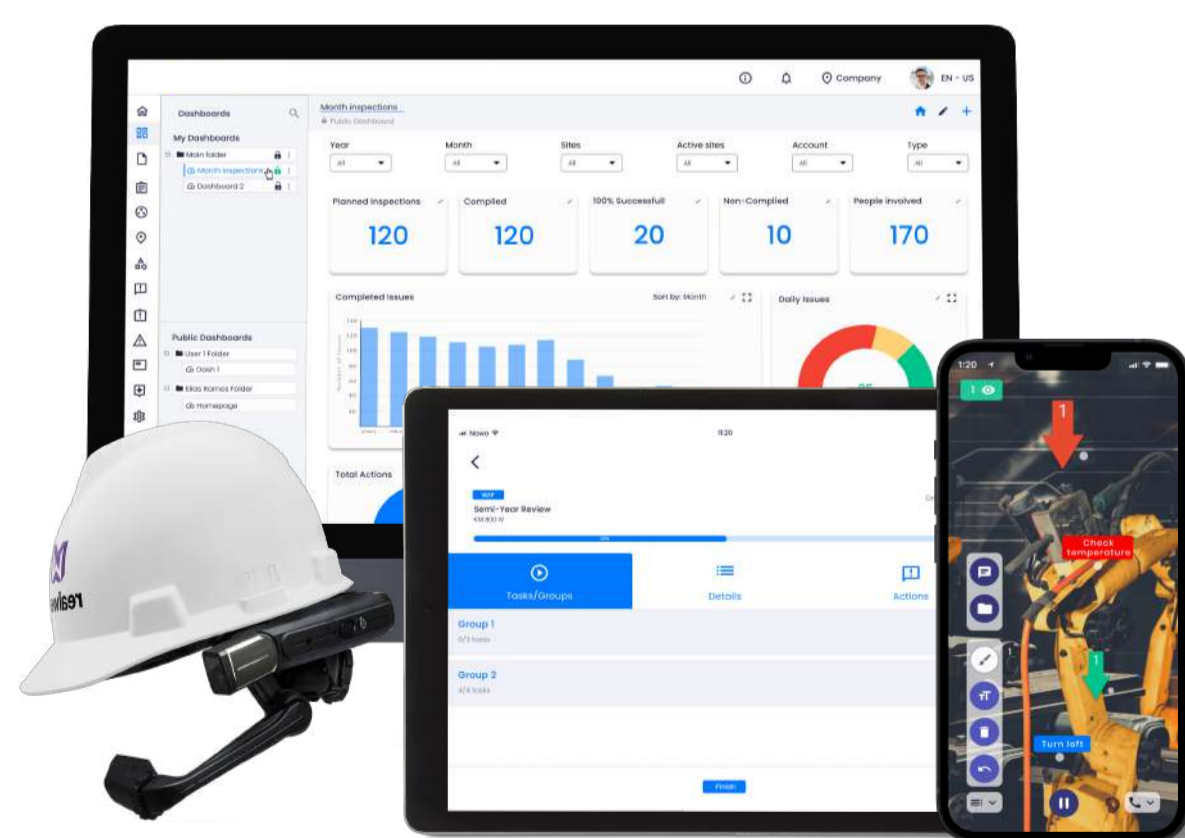


“ 43% OF INDUSTRIAL ORGANIZATIONS INCREASED CONNECTED WORKER PROGRAM FOCUS POST-COVID “
(LNS 2021)

COMPATIBILITY & INTEGRATIONS

Augmented & Connected Worker solutions are compatible with iOS and Android **mobiles, tablets** and **laptops**. They are also available on HoloLens 2 **glasses**. For visual remote assistance solutions Epson, RealWear and Vuzix glasses are also supported.

Connect and improve continuously building your own Augmented & Connected platform by integrating with in-house native apps, ensuring your own digital operations ecosystem.
Document Management, Industrial IoT Gateway, IoT Platform, ERP, MES.



ABOUT US

Glartek, founded in 2017, is a leader in Augmented Reality (AR) solutions for the Industry and its mission is to increase the efficiency and safety of industrial processes. Glartek's software solutions combine the Augmented and Connected Worker domains to bring visibility, optimization, and reassurance of field operations. Its wide range of customers vary from asset-intensive companies such as EDP and Manufacturing companies, such as Renault. Glartek is headquartered in Lisbon, Portugal, and has raised over €1.5M in venture capital.

To learn more, visit www.glartek.com

 glartek.com

 info@glartek.com

 [linkedin.com/company/glartek/](https://www.linkedin.com/company/glartek/)