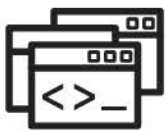


# Hosted Analyser Service

## Key Features



### Per-Session Statistics

Drill your reporting right down to a per-session level and see more detail than before.



### Scheduled Reporting

Scheduled reporting in PDF straight to your mailbox gives you peace-of-mind that routine alerts won't be missed.



### Comprehensive Reports

Executive reports for summarized info across all security aspects of your firewall. Easy to configure with pre-configured report and alert templates.



### Change Control

Comprehensive change control tracking for any changes made to the firewall configuration.

## What are our firewall reporting and analysis services?

Firewall Reporting & Analysis Services is a cloud-based analysis service that provides in-depth reporting and alerts for your Fortinet firewall either hosted or on-premise.

Firewall Reporting & Analysis Services allows you to view real-time and historical data from your firewall, create scheduled reports from multiple different templates and generate alerts for events. Ensure company fair usage policies are enforced and that no abuse is taking place on your network.

Cyber Security insurance policies require a minimum of 60 days log storage from firewalls to ensure compliance making firewall log storage a must in today's world of hi-tech security.

# Cloud visibility for your hosted or on-premise firewalls.

## Get in touch



### Datcenters Located:

- Durban
- Johannesburg
- Cape Town



[sales@firstnet.co.za](mailto:sales@firstnet.co.za)  
[www.firstnet.co.za](http://www.firstnet.co.za)

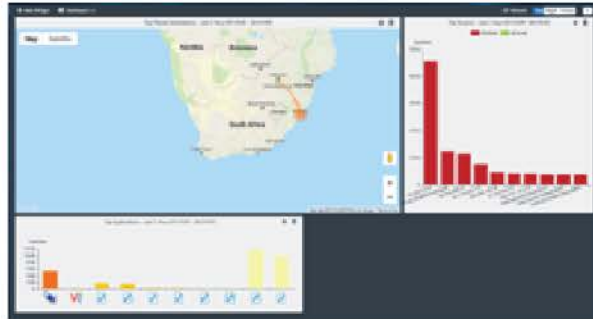


24/7 Support Tel: 0861 989 896

# Dashboard Features

## Customer Dashboard

Customisable NOC-SOC dashboard providing real-time security information.



ID	Event Name	Severity	Event Type	Count	Priority	First Occurrence
1	1. Microsoft Exchange Mailbox - SQL	High	SQL	1	High	2017-07-20 10:00:00
2	2. Microsoft Exchange Mailbox - SQL	High	SQL	1	High	2017-07-20 10:00:00
3	3. Microsoft Exchange Mailbox - SQL	High	SQL	1	High	2017-07-20 10:00:00
4	4. Microsoft Exchange Mailbox - SQL	High	SQL	1	High	2017-07-20 10:00:00
5	5. Microsoft Exchange Mailbox - SQL	High	SQL	1	High	2017-07-20 10:00:00
6	6. Microsoft Exchange Mailbox - SQL	High	SQL	1	High	2017-07-20 10:00:00
7	7. Microsoft Exchange Mailbox - SQL	High	SQL	1	High	2017-07-20 10:00:00
8	8. Microsoft Exchange Mailbox - SQL	High	SQL	1	High	2017-07-20 10:00:00
9	9. Microsoft Exchange Mailbox - SQL	High	SQL	1	High	2017-07-20 10:00:00
10	10. Microsoft Exchange Mailbox - SQL	High	SQL	1	High	2017-07-20 10:00:00
11	11. Microsoft Exchange Mailbox - SQL	High	SQL	1	High	2017-07-20 10:00:00
12	12. Microsoft Exchange Mailbox - SQL	High	SQL	1	High	2017-07-20 10:00:00
13	13. Microsoft Exchange Mailbox - SQL	High	SQL	1	High	2017-07-20 10:00:00
14	14. Microsoft Exchange Mailbox - SQL	High	SQL	1	High	2017-07-20 10:00:00
15	15. Microsoft Exchange Mailbox - SQL	High	SQL	1	High	2017-07-20 10:00:00
16	16. Microsoft Exchange Mailbox - SQL	High	SQL	1	High	2017-07-20 10:00:00
17	17. Microsoft Exchange Mailbox - SQL	High	SQL	1	High	2017-07-20 10:00:00
18	18. Microsoft Exchange Mailbox - SQL	High	SQL	1	High	2017-07-20 10:00:00
19	19. Microsoft Exchange Mailbox - SQL	High	SQL	1	High	2017-07-20 10:00:00
20	20. Microsoft Exchange Mailbox - SQL	High	SQL	1	High	2017-07-20 10:00:00
21	21. Microsoft Exchange Mailbox - SQL	High	SQL	1	High	2017-07-20 10:00:00
22	22. Microsoft Exchange Mailbox - SQL	High	SQL	1	High	2017-07-20 10:00:00
23	23. Microsoft Exchange Mailbox - SQL	High	SQL	1	High	2017-07-20 10:00:00
24	24. Microsoft Exchange Mailbox - SQL	High	SQL	1	High	2017-07-20 10:00:00
25	25. Microsoft Exchange Mailbox - SQL	High	SQL	1	High	2017-07-20 10:00:00
26	26. Microsoft Exchange Mailbox - SQL	High	SQL	1	High	2017-07-20 10:00:00
27	27. Microsoft Exchange Mailbox - SQL	High	SQL	1	High	2017-07-20 10:00:00
28	28. Microsoft Exchange Mailbox - SQL	High	SQL	1	High	2017-07-20 10:00:00
29	29. Microsoft Exchange Mailbox - SQL	High	SQL	1	High	2017-07-20 10:00:00
30	30. Microsoft Exchange Mailbox - SQL	High	SQL	1	High	2017-07-20 10:00:00

## Scheduled Reporting

Event manager allows dashboard to show only the alerts you want to see

- Application
- Application User Report
- Client Report
- Web
- 3rd-Party Security Review
- Admin and System Events Report
- Application Web and Content
- Bandwidth and Applications Report
- Client Reputation
- Cyber Threat Assessment
- Data Loss Prevention Detailed Report
- Desktop Application Usage and Risk
- DMZ Report
- Email Report
- FullScale Performance Statistics Report
- ITP Report
- IPS Report
- PCI-DSS Compliance Review
- SQL Application Usage Report
- Security Analysis
- Threat Report
- User Security Analysis
- VPN Report
- Web Usage Report
- Web & Host Report
- WiFi Network Summary
- Wireless PCI Compliance

## Comprehensive Reports

several pre-defined reports to choose from.

## Easy Navigation

Drill down reports for enhanced visibility



For more information visit:

[www.firstnet.co.za](http://www.firstnet.co.za)