



Plantweb Optics

A modern OT data connectivity, data management, and data repository solution built to accelerate your digital transformation programs. Plantweb Optics combines data from multiple applications into asset-centric information, then delivers persona-based dashboards, alerts and Key Performance Indicators (KPIs). Inspired by IT design principles, Plantweb Optics can integrate with anything, store everything, and scale out easily. Eliminate OT data silos, collect and contextualize structured and unstructured data, and easily integrate OT data with IT tools and cloud applications to improve production, reliability, safety, and energy usage.

Plantweb Optics Components

Data Source: A Data Source is connected to the Core through the Connector. It can be an OPC data source, a relational database or other custom options.

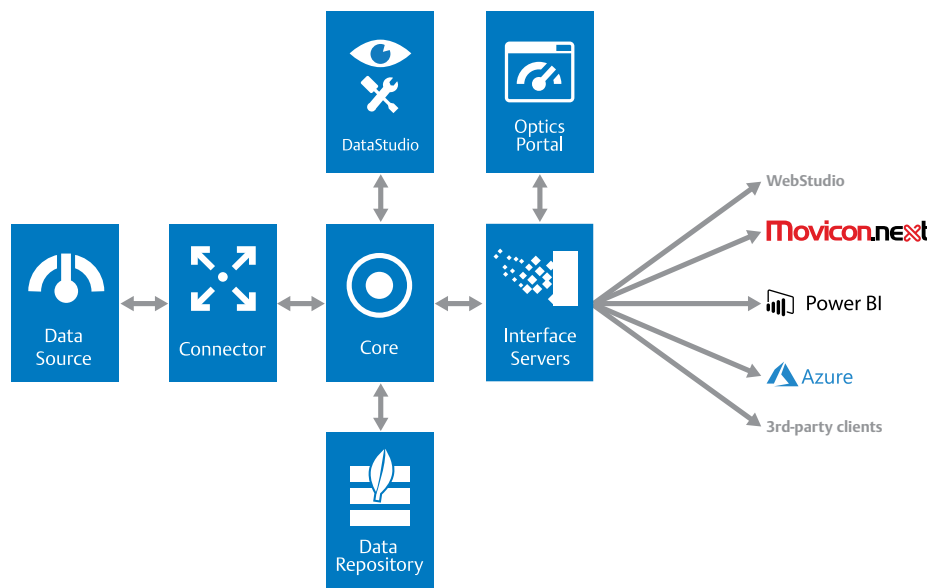
Core: The Core is the central component of the system. It establishes connections to multiple Connector services to collect data from various data sources. The Core processes the data, storing all information in the Data Repository.

Data Repository: A data store using MongoDB, an open-source NoSQL database. MongoDB is infinitely scalable to deal with vast amounts of real-time data.

DataStudio: The client application of Plantweb Optics that allows convenient, secure, and rapid access to your data source network. It is a fully integrated, single UI to perform all system engineering tasks, object configuration, mass engineering, data analysis, and coding in one application.

Interface Servers: A service that exposes data in Plantweb Optics according to the latest OPC and Web API specifications.

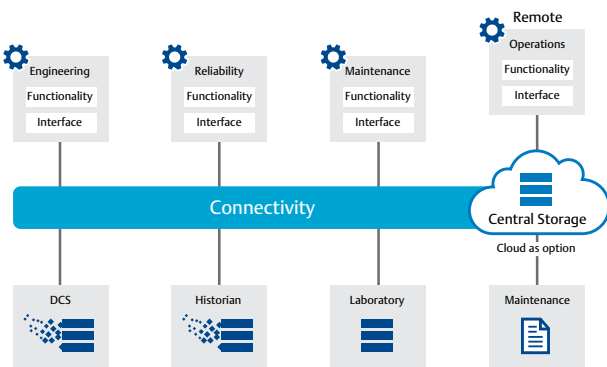
Plantweb Optics Portal: A client application accessed through modern web browsers or mobile apps for asset health visualization, collaboration, and workflow.



For details on Connector and Interface Servers, refer to Plantweb Optics Connectors flyer.

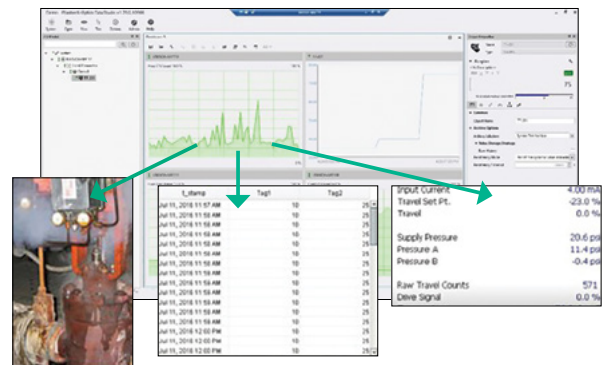
Connected OT Data Infrastructure

Eliminate data silos and manage the system centrally.



Store Any Data Type

Time series, relational, pictures, documents, video and more.



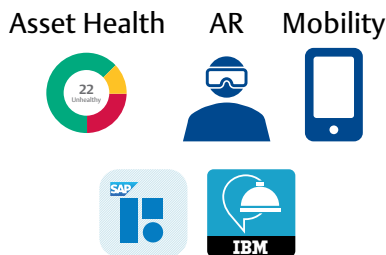
Contextualize Operational Data

Combine data from a variety of sources into logical groups or hierarchies such as ISA-95, I/O or physical structure, and multiple KPI/Reporting options.



Connected Worker

Plantweb Optics Portal provides a collaborative environment to keep experts connected to the health of their assets. Application integration, including CMMS, Augmented Reality, and mobile solutions enhance workflows and drive corrective actions.



Workflow Integration

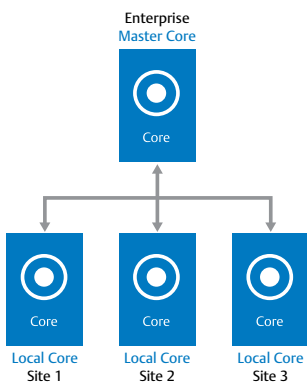
Use IT Visualization Tools

Have the freedom to use modern IT visualization tools for beautiful user experiences.



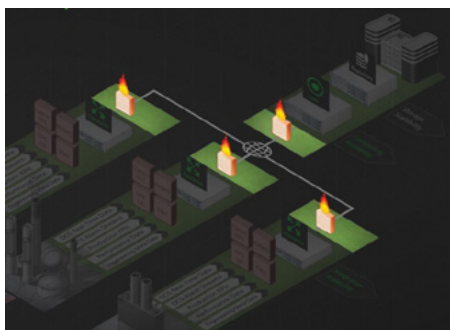
Manage Easily

Centrally manage an enterprise system with access to create, deploy, and delete objects. Allocate resources to match business continuity needs.



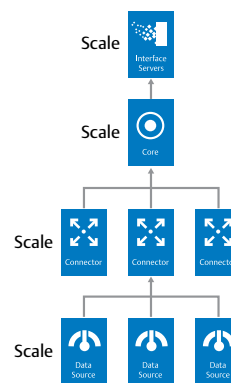
Security

Modern identity and access management (IAM) model fit for enterprise deployments.



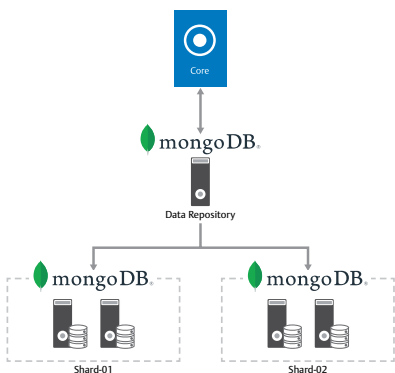
Scale Easily

Every component of Plantweb Optics can scale to support a range of design patterns from individual sites deployments to an entire enterprise solution.



Modern Data Repository

Enterprise scalability with MongoDB based data repository. Scale horizontally with clusters and meet availability needs with replica sets across your global data center infrastructure.



Powerful Logic Engine

Create rules and policies with Lua scripts. Save data scientist time by doing data transformations either at the Data Source or in the Core.

```

1 SimpleMathLib = {
2   Add = function(a,b)
3     return a+b
4   end,
5   Subtract =function(a,b)
6     return a-b
7   end
8 }
9 return SimpleMathLib

```

Deployment Flexibility

Deploy on-premises or in cloud infrastructure in minutes. Automate administration steps using full featured Command Line Interface (CLI) capabilities.

