

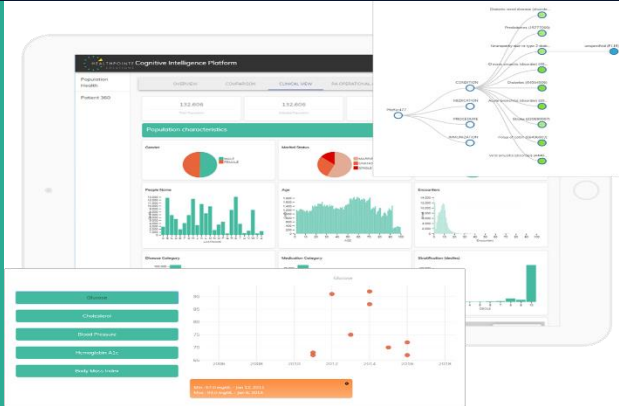
HealthPointe Solutions

Intelligent Informatics



Intelligent Informatics

- Dynamic dashboards monitored by Cognitive AI supports automation and provides stakeholder focus to identify problems earlier
- HealthPointe's knowledge repository enriches analytical insights for improved effectiveness of performance monitoring
- Workflow-based alerts and messages make dashboards not just an information display but highly actionable



Intelligent Informatics

Using Cognitive AI Solutions to provide not only the analytics insights but also monitors the value creation of business processes

Today, many healthcare practices struggle with information that is siloed in incompatible systems and disconnected from workflows. Practitioners must search for clinical information across multiple sources, leaving them with less time to focus on providing quality care. Practices lack a complete picture of their activities, resulting in inefficient processes and missed opportunities.

Our solution connects all your healthcare information into dynamic dashboards, integrated with your workflows to enable action where and when it is needed.

- *Early identification of patterns:* Support automation and identify problems early with real-time, dynamic dashboards.
- *Expanded analytic Insights:* Gain a more complete clinical picture with aggregated health profiles, from the population to the individual level.
- *Actionable Recommendations:* Take the right action at the right time with workflow-based alerts and messages.
- *Evolve the culture:* Build a culture of improvement as insights over time lead to more efficient, effective workflows and improved clinical decision making.

A Cognitive AI-supported solution that helps gain actionable insights while build a culture of metrics.

- *Monitor Performance:* Optimize your processes with performance monitoring enriched by analytical insights .

Important Differentiators

HealthPointe Intelligent Informatics solution is modular allowing a client to receive a tailored package to only consume and pay for only what is needed. It is common in the market for analytic insights to take 90-120 days to arrive at the client's door. Intelligent Informatics significantly reduces the time to process analytic insights ensuring your organization has insights while they are still relevant. The solution goes beyond retrospective crunching of metrics and proactively provides actionable recommendations for undesired metric values.

Integrated Reporting for Regulatory and Performance Measures

HealthPointe can generate dynamic dashboards and plug-ins into existing EMR's that support the medical record summary within the provider's workflow. HealthPointe provides the necessary data available in near real time so the care team can take action to schedule necessary treatments, coordinate care, and better meet their quality improvement goals.

To learn more about how HealthPointe Solutions can help your business, contact us at bizdev@healthpointe-solutions.com or +1-800-601-7114

HealthPointe Solutions, Intelligent Informatics Solution (continued)

Optimization Across the Continuum of Care

Intelligent Informatics provides dynamic dashboards that provide real-time insight across and within all your healthcare metrics, enabling action when and where it is needed.

1. **Data Enrichment** – Enables a provider to access new analytic insights using our cognitive AI knowledge base for cost, quality and utilization program monitoring and improvements.
2. **Quick access to action** – Reduce the lifecycle of accessing insights from months to days.
3. **Reduce administrative costs** and improve experience by reducing data latency, improve quality, and standardizing analytics and insights in workflow.
4. Support **clinical practice transformation** and measurement by integrating AI into workflow moving from descriptive analytics to prescriptive analytics.
5. **Reduce development, integration, and maintenance** costs with modernizing reporting and data technology.

Value to Stakeholders – Results from Customers

Client Use Case – Large Integrated Delivery System

Challenge:

Lower the cost and time to market by 10% for new treatment protocols.

Value and Return on Investment:

- Improved productivity of clinical staff time and capacity by 27% within 60 days of analytics deployment
- Reduced time lag for Budget forecasts by 90 days and overall data quality improved by 37%

Analytic Modules

Risk Adjustment Medicare <ul style="list-style-type: none"> • Recapture • Prospective Markers • RAF Valuation Analytics • MA, Caïd, ACA 	Quality Measures <ul style="list-style-type: none"> • HEDIS • STARS • PQA • NQF 	Patient Safety <ul style="list-style-type: none"> • Drug Safety • Drug Information • Drug Interactions • Dosage 	Medication Analytics <ul style="list-style-type: none"> • RxNorm • NDC • Medispan • First Data Bank
Labs <ul style="list-style-type: none"> • LOINC • Labs Values/Standards • Cost and Utilization • Procedures • CMS Rate Tables 	Cost/Utilization/TCoC <ul style="list-style-type: none"> • COS – Utilization • Procedures • CMS Rate Tables • Treatment Classes • TOS/POS 	Productivity <ul style="list-style-type: none"> • Units of Service • Speciality Mix • Capacity • Budget Prediction 	Morbidity <ul style="list-style-type: none"> • Condition Graph • Pop Health Actions • Education • Shared Decision Support • Code Analytics/Mapping • Recommendation Algorithm
Provider Analytics <ul style="list-style-type: none"> • Attribution • Specialist to Condition • Location, Geospatial • Hospital/ Utilization • Engagement analytic – meta data 	Consumer Analytics <ul style="list-style-type: none"> • Household Consumer Spending • County/zip Social determinants • Per capita Income analytics • Geospatial Analytics • Engagement Analytic – meta data 	Natural Language <ul style="list-style-type: none"> • Chart Analytics • OCR Analytics • NLP Analytics • NLU Analytics • NLG/ Machine Translation • Content, Protocol, Treatment Standard 	Genetics <ul style="list-style-type: none"> • Pharmacogenomics • Nutrigenomics • EPI genomics • Exercise Genomics
Lifestyle <ul style="list-style-type: none"> • Wellness Education • UK/US Preventative Health • IoT Analytic • Micro Survey • Digital Health • Supplement Interactions 	Treatment Plan <ul style="list-style-type: none"> • Treatment Pathways • Symptom Analytics • Shared Decision Support Analytics 	Behavior Modification <ul style="list-style-type: none"> • Cognitive Behavioral Theory Agent 	Data Quality <ul style="list-style-type: none"> • HL7 / Clinical Optimization • Medical Claims • Rx Claims • Lab Data • Member Demographics