



[www.emada.com](http://www.emada.com)



# HumanLogic

[www.human-logic.com](http://www.human-logic.com)

email: [info@human-logic.com](mailto:info@human-logic.com)

Telephone: +971 4 263 3511, Fax: +971 4 263 3514.

Partners



*eMada Student Information System, an enterprise software solution by Human Logic, ushers in the seamless end-to-end management of higher education institutions.*

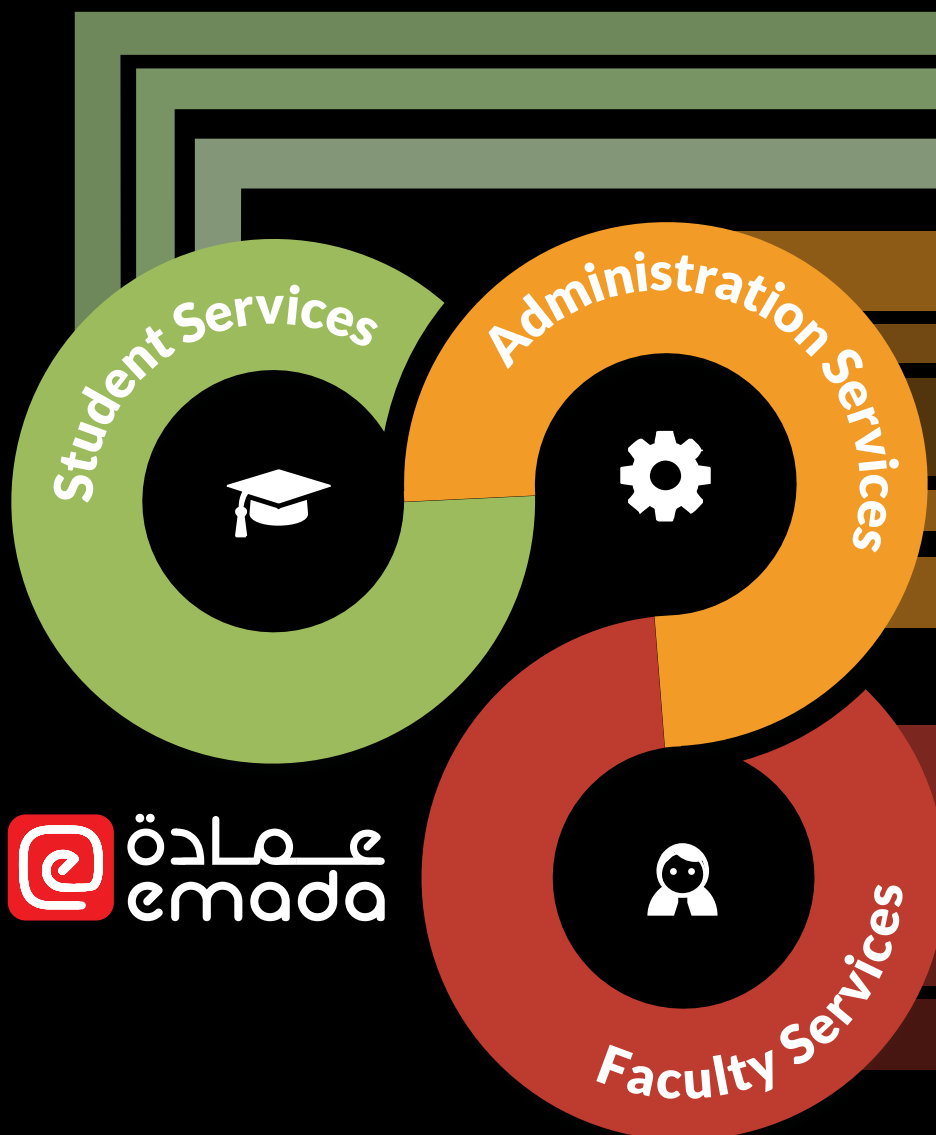
*Leveraging Human Logic's higher education business and technological expertise, eMada addresses the complex business problems of all stakeholders of the institution. eMada is designed from ground up as a self-service software that integrates business process workflows for each operation handled by the university. Every stakeholder enjoys anywhere-anytime accessibility to process requests and can perform operations hassle-free.*

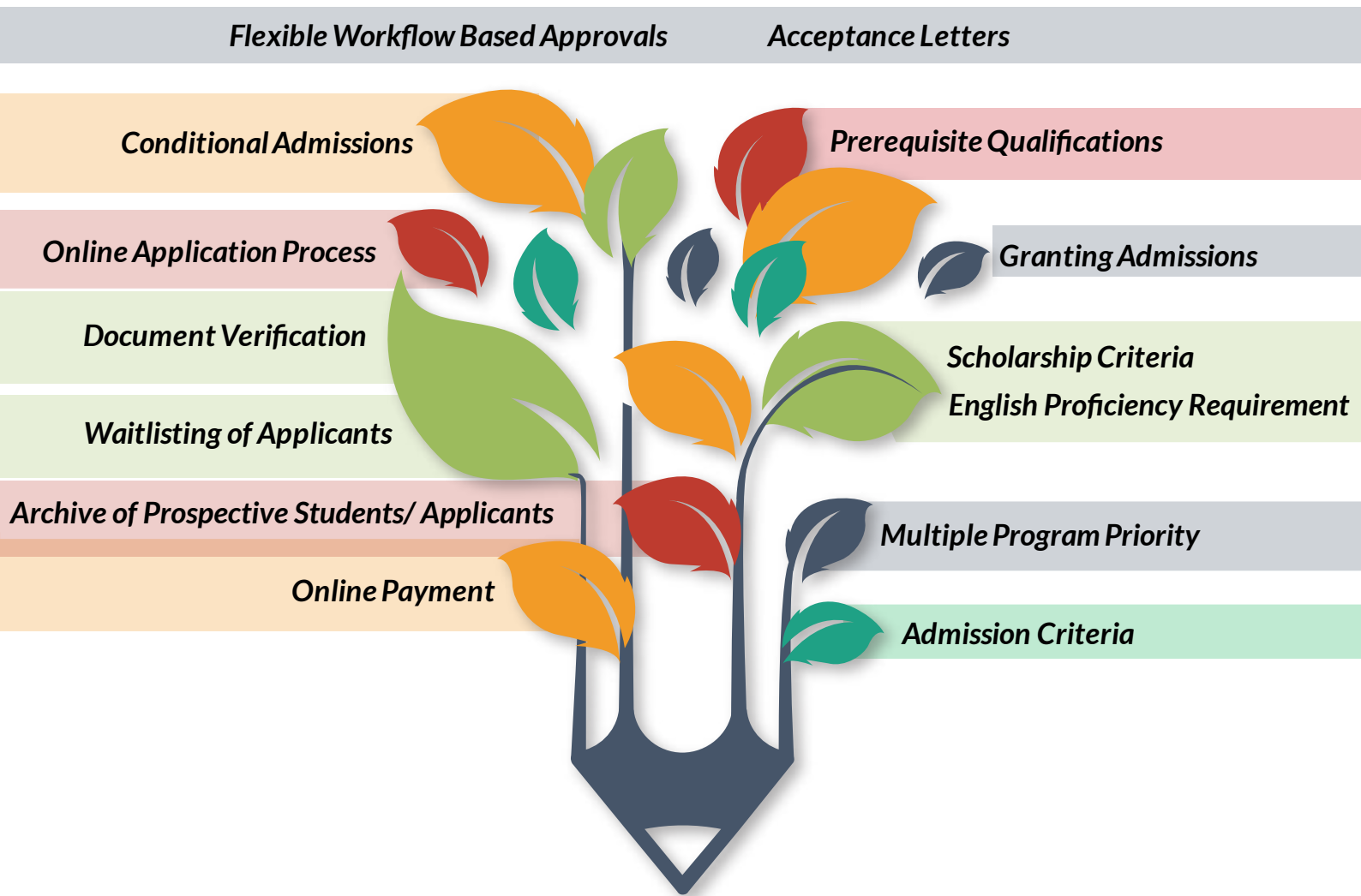
*Perfectly aligned with the "credit hour" system of higher education organizations spanning the Middle East market, eMada is built on Microsoft Stack and runs on Microsoft Azure, or as on-premise deployment.*

*The cloud-based eMada liberates clients from having upfront capital expenditure. Also, it fully integrates with other back-office surround systems.*

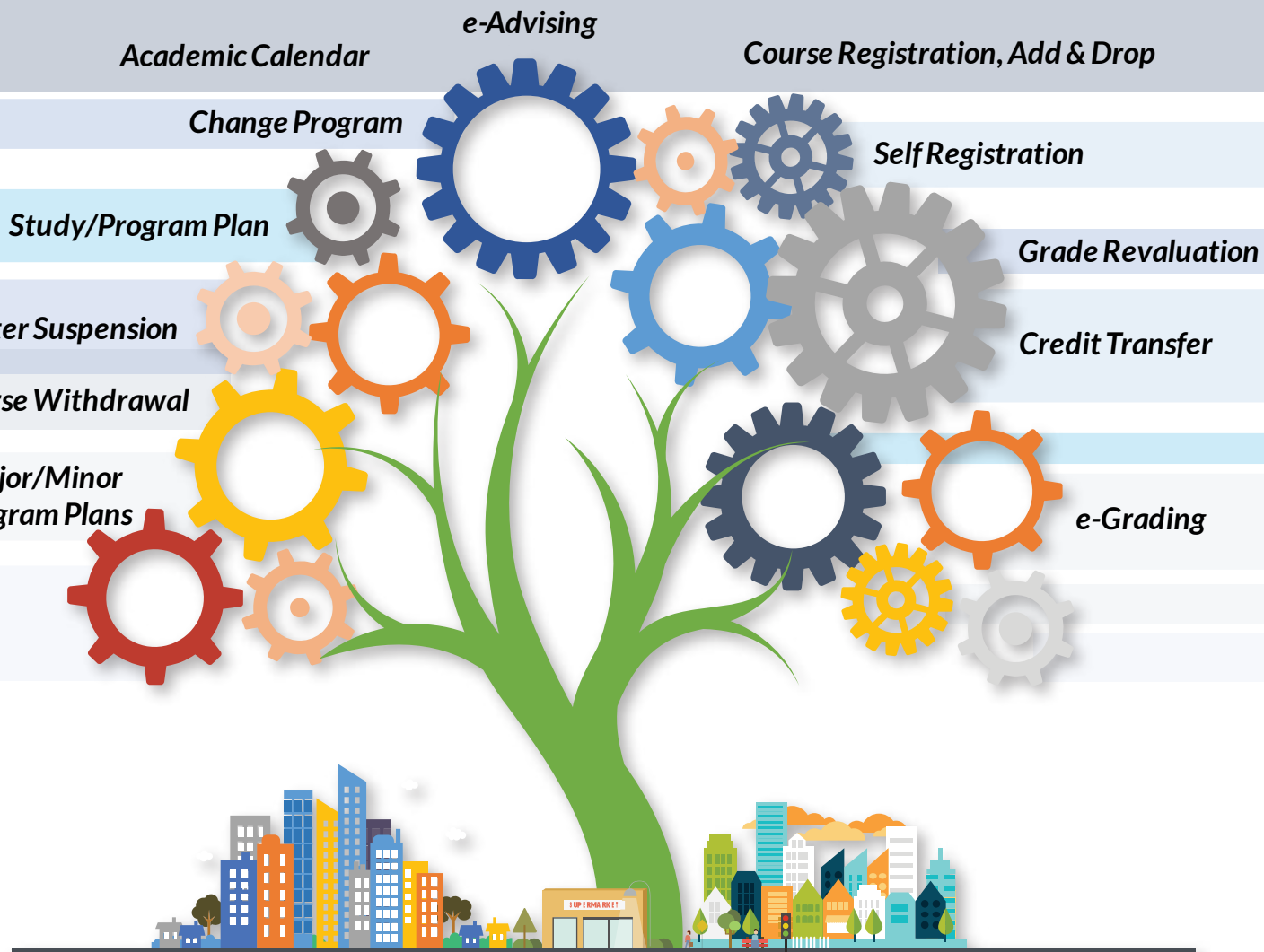
*Not only is eMada comprehensive, but also adaptive and flexible in implementation. eMada can fully integrate with other existing ERP systems offering complete agility to combine software platforms for high-end business value creation through a end-to-end solution.*

*Integration with Microsoft Office 365 and the Azure active directory is the cherry on the top.*

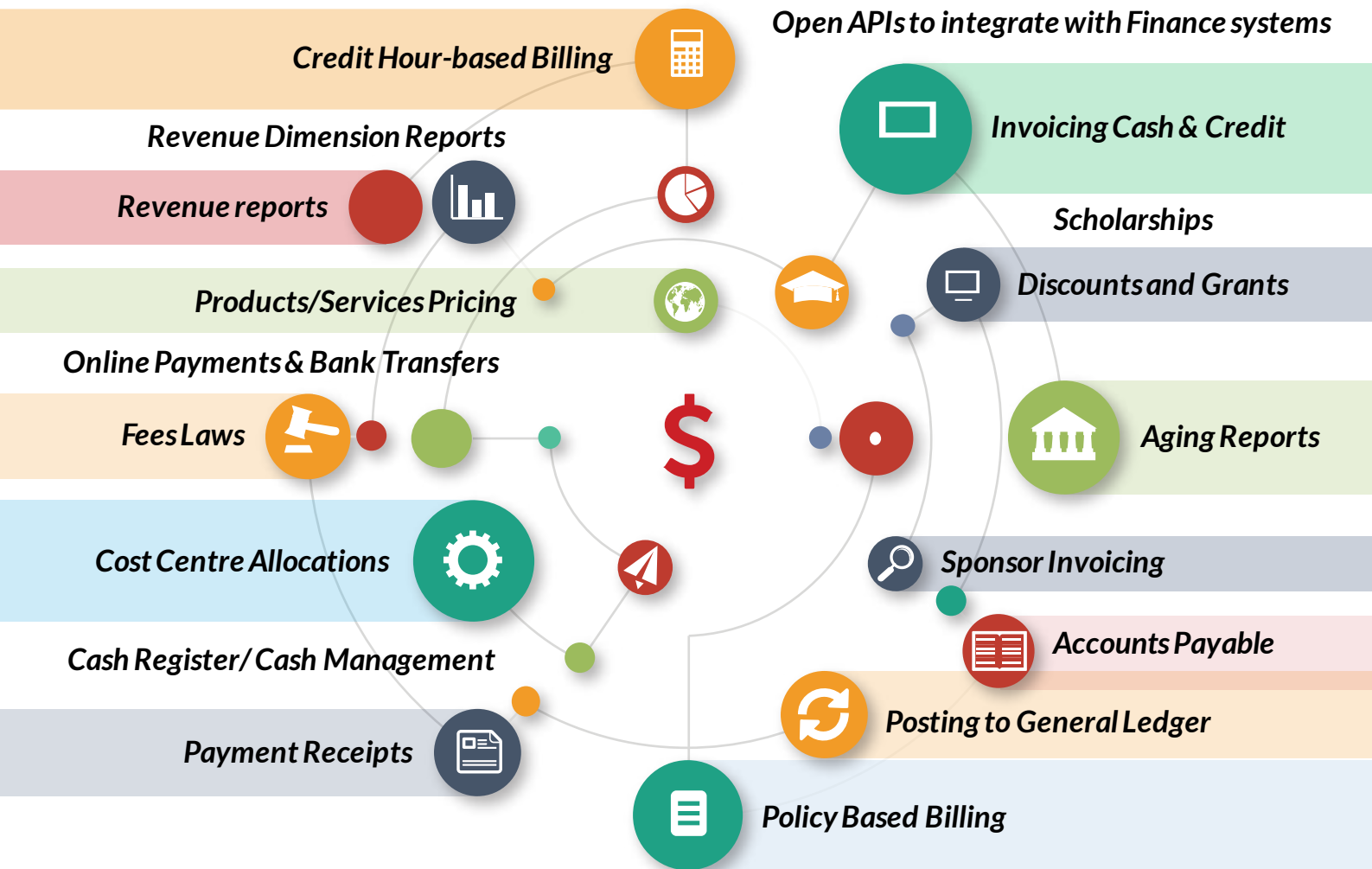




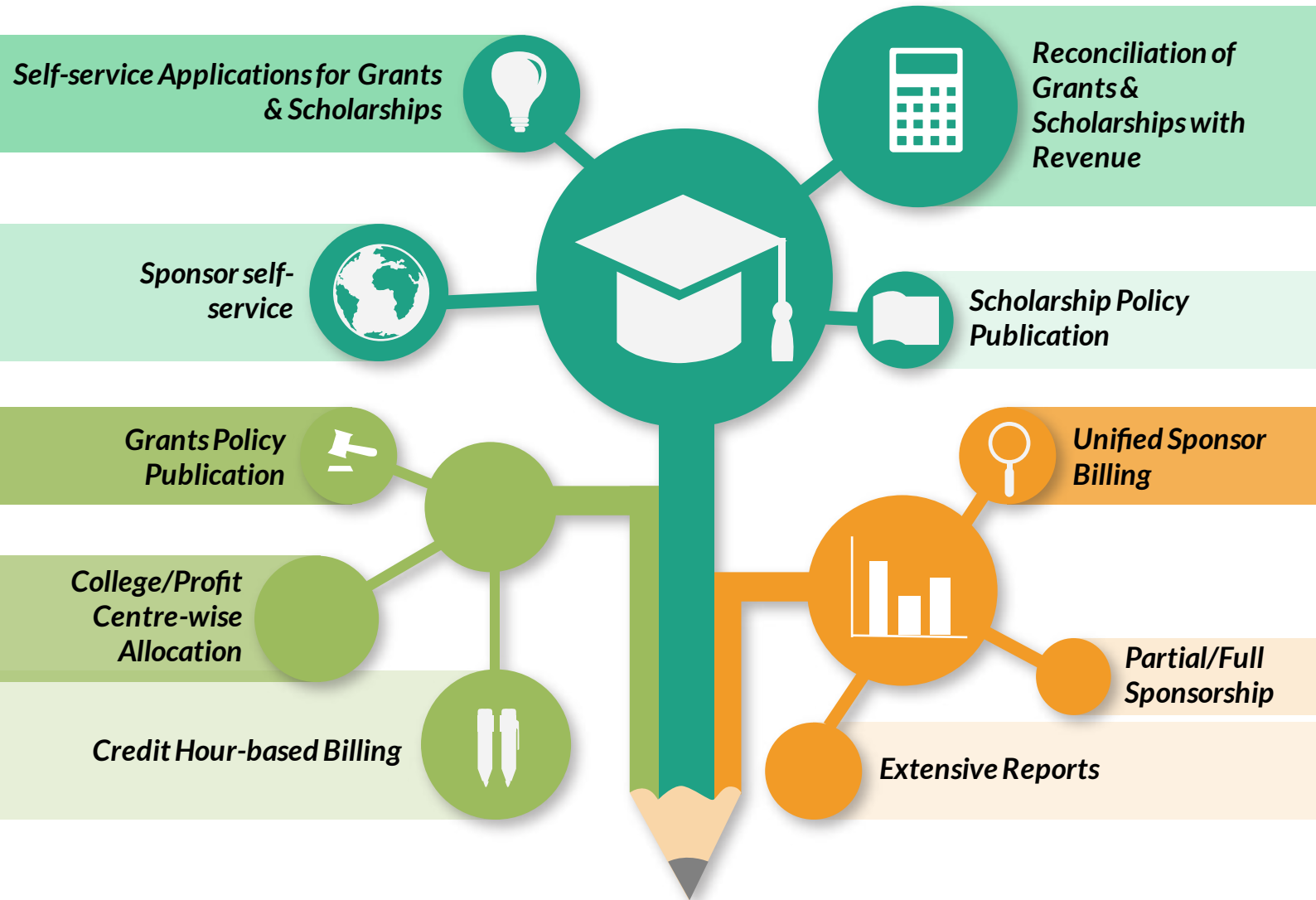
*eMada is a consolidated and comprehensive solution to seamlessly handle admission process for online applicants as well as walk-in prospects, such that it can be transparently monitored by any stakeholder and is automatically updated at every step, to provide the best customer experience.*



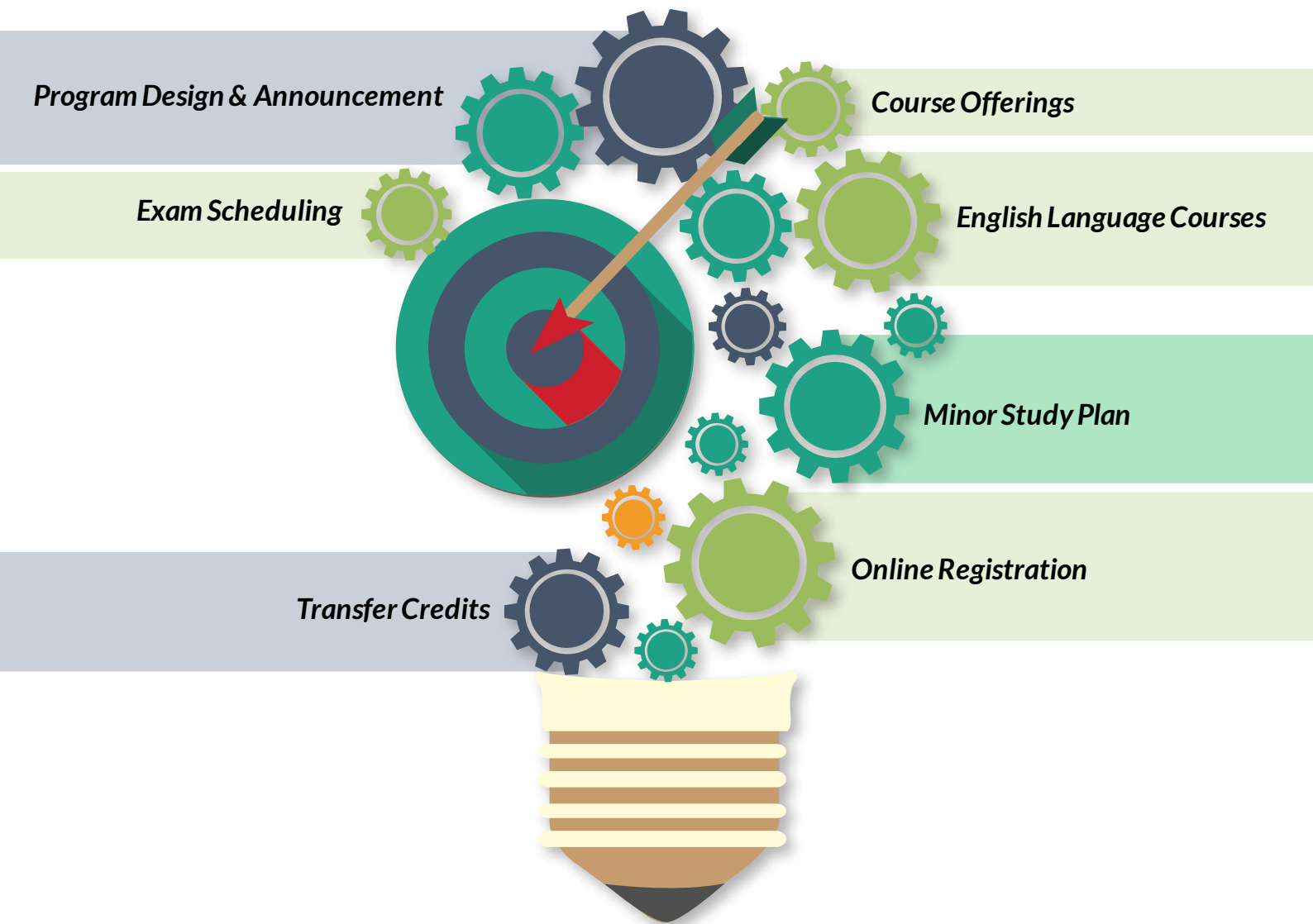
*eMada's Registration Module is the hub for all academic data. eMada automates and unifies all related and recurring activities to increase administrative efficiency. eMada's unique e-advising feature provides flexibility to address complex registration situations with ease and transparency.*



*eMada provides the most efficient solution to streamline all the finance processes of the academic institution. With eMada you can securely and effectively perform all academic financial transactions and manage financial aid, scholarships and grants quickly, transparently and efficiently.*

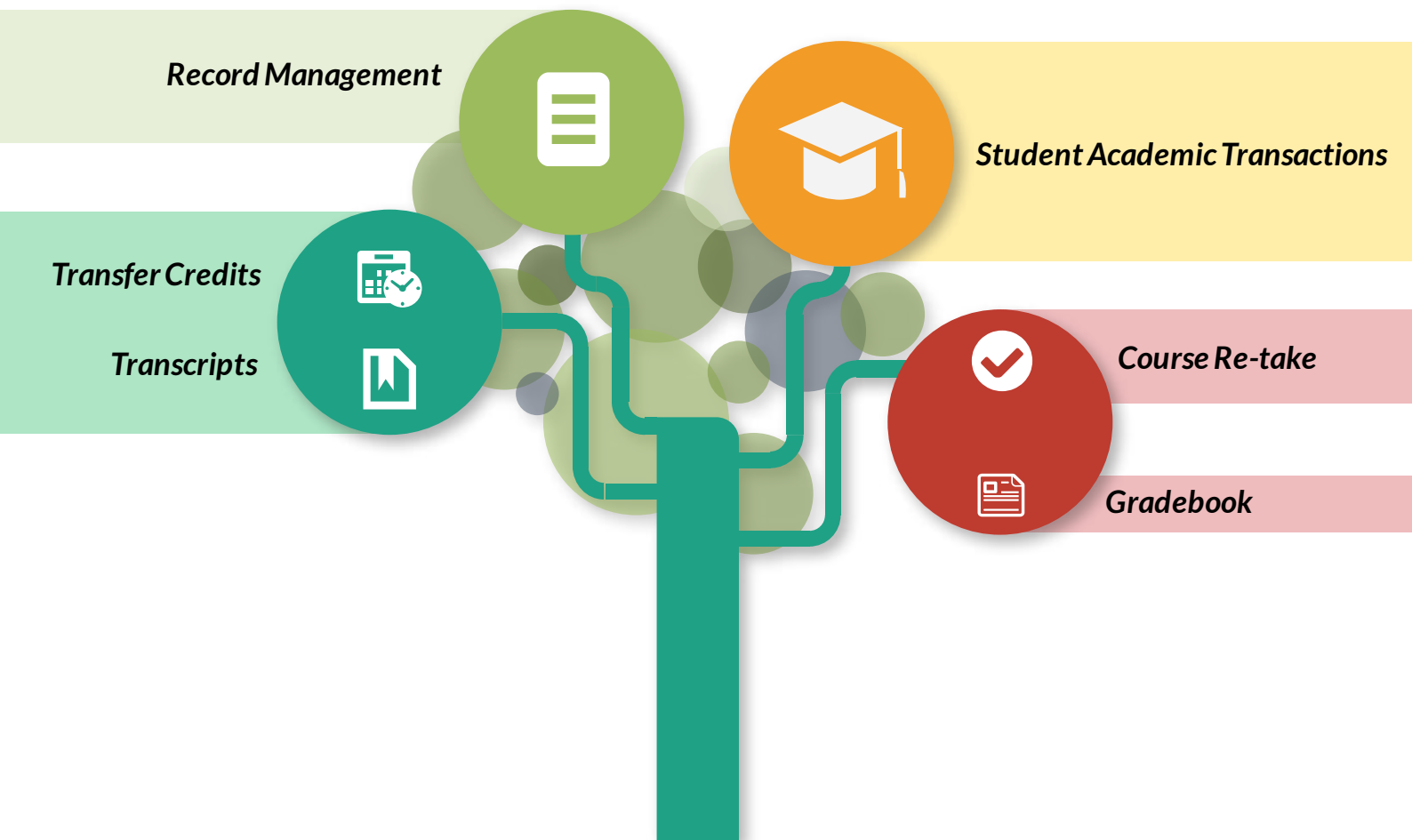


*eMada is the single-window solution, with a self-service approach for seamlessly addressing the scholarship, grants, sponsorship nomination, qualification, allotment and billing processes of the institution.*



*This is an end-to-end module for academic institutions that offer preparatory/ public courses. It defines the courses on offer, entry levels and certification exam. eMada supports various grading methodologies and policies to suit the individual needs of the academic institution based on its operations.*

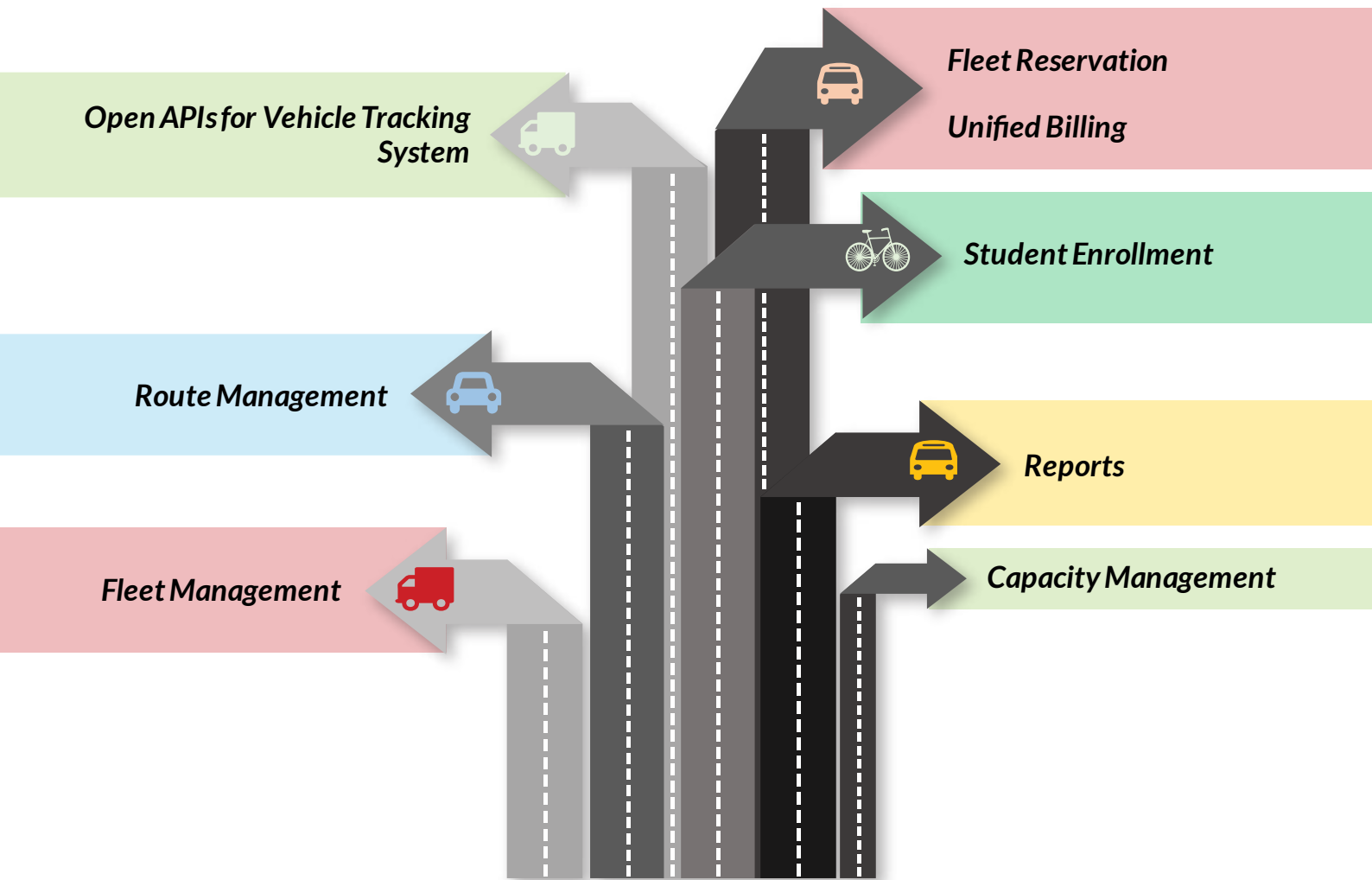




*eMada module for Academic Records manages and maintains critical and sensitive information for gradebooks and transcripts with high security, tracking details of any changes.*

**Booking and Reservation Management****Accommodation Management****Check-out Workflows****Automated Billing****Room Allocation****Open APIs for  
attendance & time  
tracking systems**

*eMada's Hostel module manages all aspects of accommodation provided by the institution including long term lease, short term lease and non-student lease. It provides information on room availability and rents. It manages the booking and reservation process, monitors check-in/check-out and automatically generates billing records.*



*eMada is a complete transportation management system which seamlessly manages the complex transportation needs of the academic institution in higher education. It defines the different routes available and schedules their timings, holds and maintains all details of vehicles and manages issuance and cancellation of student transport passes.*