

# Moata Insights

Mott MacDonald's  
industry leading online  
project controls and  
reporting system



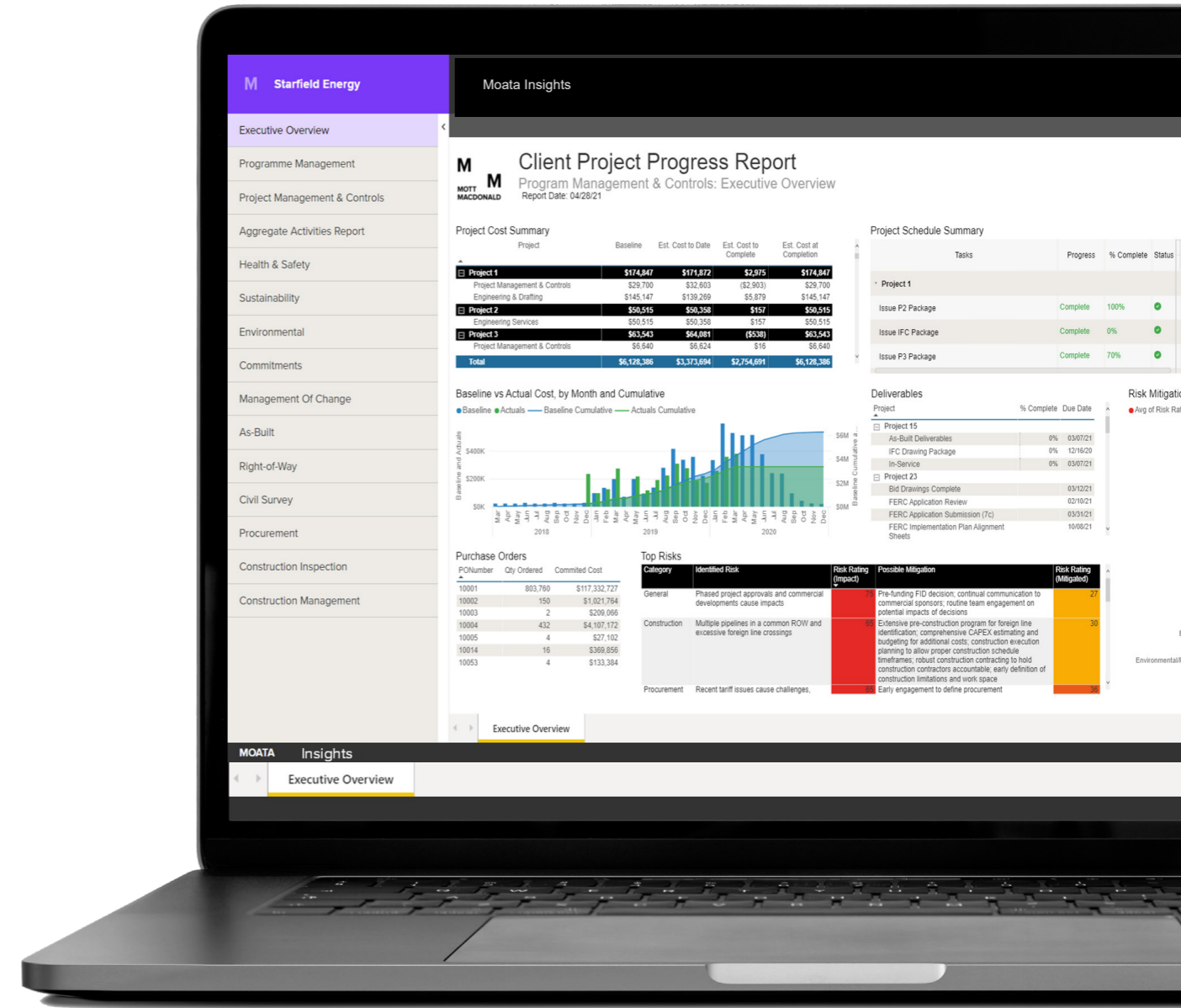
# Moata Insights

Automated online project management and controls reporting and dashboards

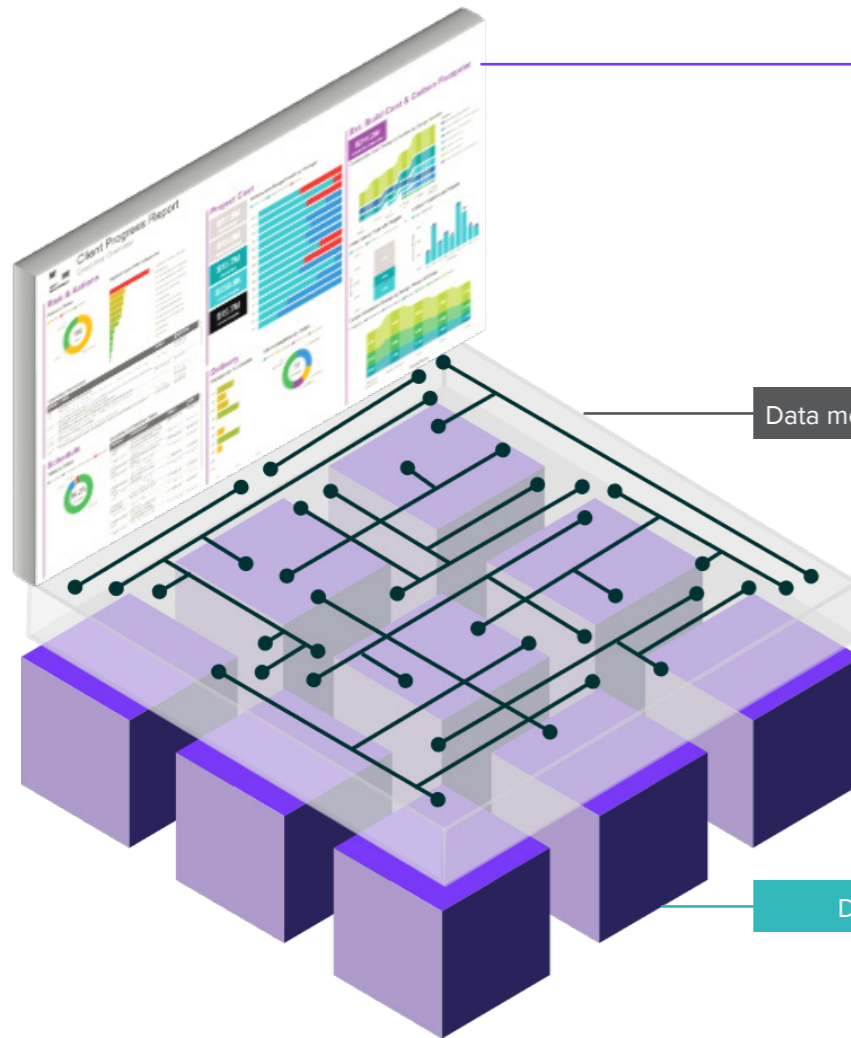
Mott MacDonald's proprietary **Moata Insights** system is ideal for any program or project, providing industry-leading data and insights for project teams, owners, consultants, contractors and stakeholders. Our tool provides real-time, automated, online project controls, document/data management, reporting and dashboards for various project disciplines.

Insights uses data from any applications in the Moata platform and any other data source to generate an integrated data model and dashboards that present project team members a live, accurate assessment of key metrics when needed. Our dashboards provide updates to every aspect of the project, including health and safety, schedule, cost, budget and forecast, earned value, change management, risks and mitigation, deliverables, actions, engineering, mapping, survey, right-of-way, environmental, permitting, procurement, logistics, construction and close-out.

Insights is not just for major projects – our system can also be used for program-level reporting and controls on maintenance capital, integrity, O&M and other small to medium-sized projects.



# End-to-end project analytics and insights



## Typical dashboards:

- Executive overview
- Health and safety
- Cost control/forecasting
- Schedule control
- Earned value
- Risk management
- Deliverables
- Actions
- Actual vs. baseline project controls
- Change management
- Engineering and mapping
- Field surveys and investigations
- Environmental/cultural
- Permitting
- Land/right-of-way
- Material procurement & contracting
- Material traceability
- Construction management/inspection
- Field activity tracking
- Delivery and progress management
- Logistics
- Tracking of submittals, RFI's, NCR's
- Sustainability/carbon footprint reduction
- Social outcomes

## Data model and pipelines

## Data sources



## Features

- Pulls data from almost any source and provides reports and analytics for value-added insights
- Divided up by project disciplines for role-based security
- Fully customizable reports
- Connections with GIS/geospatial data and design models



## Functionality

- Program/project management and controls
- Proactive risk management
- Field activity execution
- Delivery and progress management
- Actual vs. baseline controls, monitoring and trending
- Filtering and slicing for wide range of program/project breakdowns



## Logistics

- Total logistics throughout project lifecycle
- Procurement, materials management and construction phases
- Supply chain governance, contract conformance and coordination
- Material/equipment sourcing, production, tracability, transportation, off-loading, storage and installation



## Benefits

- Robust, concise and consistent project controls, reporting and dashboards
- Standard real-time reporting on every aspect of the project
- Strengthens ability to proactively manage the project and improve results
- Major differentiator for controlling and shaping the activities that make a difference

# Moata Inspect

## Proactive data capture and analytics for field activities

In an increasingly digital world, our clients are seeking for a comprehensive, integrated data collection and reporting system for construction management/ inspection and other field activities.

**Moata Inspect**, Mott MacDonald's proprietary, industry-leading system, allows you to monitor progress and activities through the various stages of field work. With smart forms tailored to each specific application and automated integration processes, your collected data is directly tied to projected baselines, progress, cost, schedule, project controls elements and reporting through **Moata Insights**.



### Functions

- Provides configurable smart forms for collecting data and documenting any activity
- Integrates fully with Moata applications (e.g., Geospatial progress maps and visuals, Insights dashboards and reporting, etc.)
- Automatically generates PDF output submissions of field data
- Captures a range of data types including photos, GPS locations, free text, barcodes, and a growing list of new innovations including RFID, LiDAR, and more
- Captures data from anywhere — even when you're offline



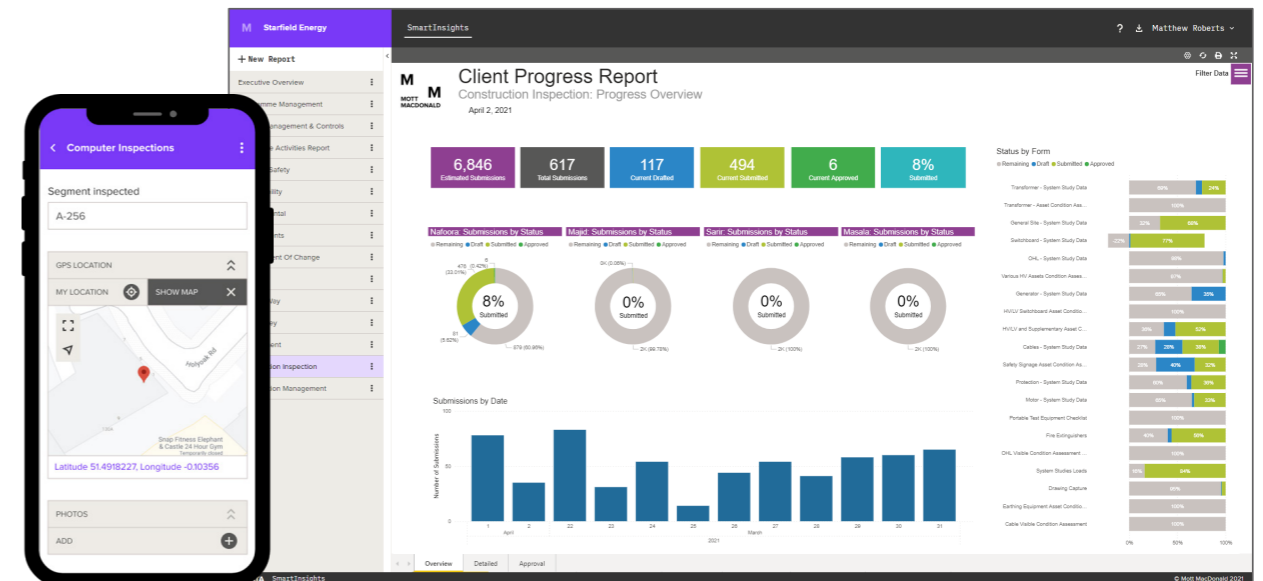
### Features

- Allows for capturing field activities
- Logs construction progress
- Records engineering/ environmental documentation
- Gathers numerous data types using smart forms designed for mobile devices

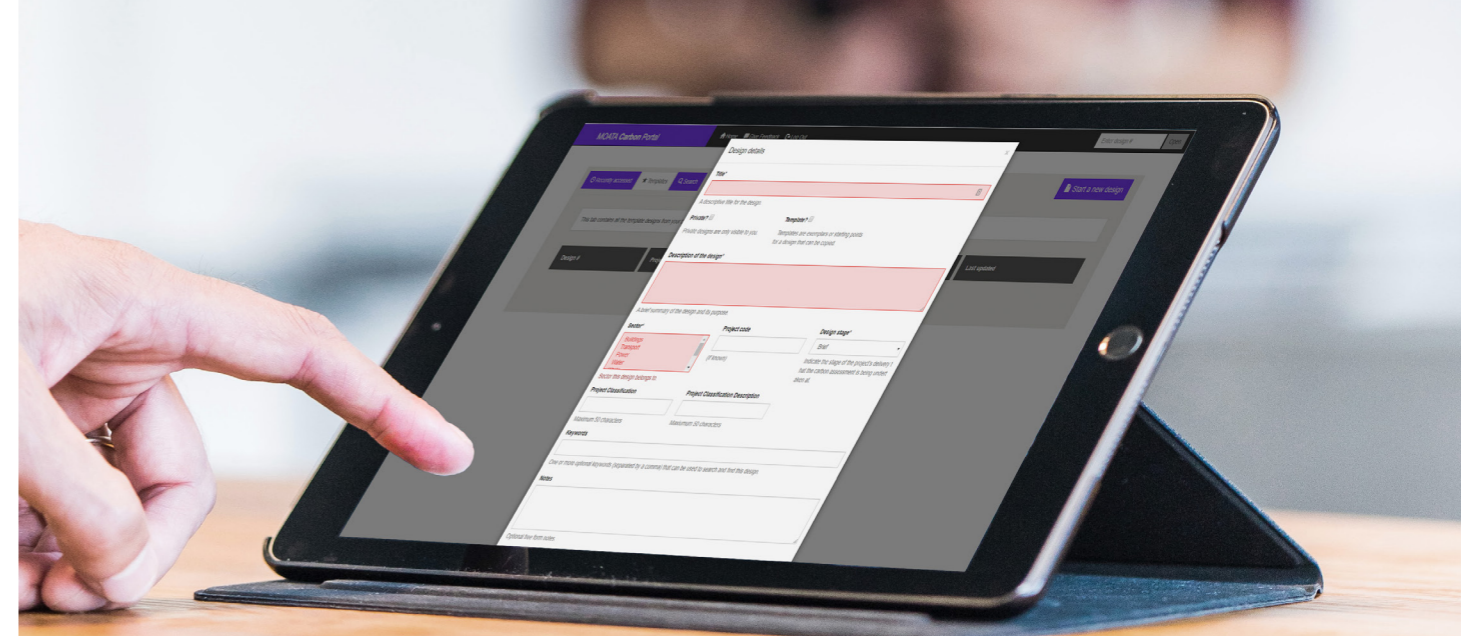


### Benefits

- Reduces manpower and overheads for capturing and recording information from the field
- Increases visibility of field activities, reducing risk to project cost and schedule
- Provides exponential efficiencies through integrated data and applications
- Creates a direct connection between the field, project managers, stakeholders, and the digital twin



# Information is changing the world

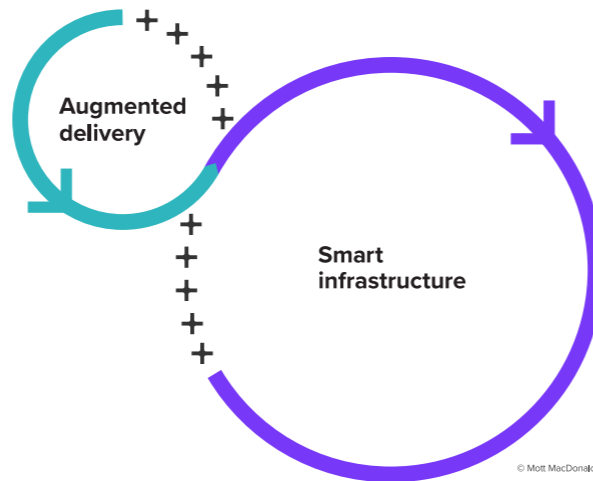


## A digital world

Data and technology are transforming the way we create value – the way we conceive, deliver and utilize the assets around us. Information and collaboration in a geospatial context are crucial to delivering projects efficiently and maintaining assets effectively over their life.

We have the world's information at our fingertips yet often struggle to find what we need at work. The right use of technology can save millions – from making the right investments, through productive delivery to optimising operation. Our platform can unlock that potential.

## Bringing the best of digital + domain



## The future is connected

Moata, our digital twin platform, hosts a range of solutions that use the power of data to solve today's most pressing problems around the globe. It is open, secure, scalable and adaptable, delivering predictive power in a geospatial context, through advanced analytics and machine learning.

**Moata enables you to see the unseen, act with conviction and impact progress.**

# Why choose us?

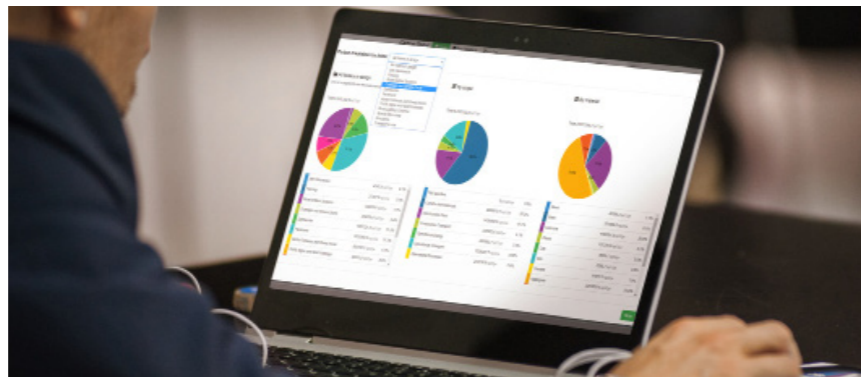
---

The world's largest asset owners and contractors choose us because of our unmatched digital + domain offering.

---

Mott MacDonald provides a range of innovative solutions to many of the largest asset owners and contractors in the world. Leading the way with our proprietary **Moata Insights** application, they choose us because of our unmatched **domain + digital** offering. We've codified our engineering and sustainability consultancy know-how within a professional software solution.

We intrinsically understand the project at hand and the need to integrate with other information management processes. Our solution is already in use by many projects on a global scale and has been proven over time to deliver unparalleled performance, gains in efficiency and value-added results. We continually work with project teams and clients to provide exact solutions to their specific needs.



Get in touch to understand how Moata Insights can help your team see the unseen, act with conviction and impact progress.

Our team looks forward to working with you.



**Vinesh Naicker**  
Insights Product Lead  
vinesh.naicker@mottmac.com



**Ron Sattan**  
AIS Unit Lead  
ronald.sattan@mottmac.com



**Jim Forster**  
AIS Unit General Manager  
james.forster@mottmac.com

# More Moata solutions

At Mott MacDonald we **drive digital transformation** by combining domain experience with digital expertise:

- Delivering social, economic and environmental value **connecting innovation to outcomes**
- All powered by our digital solutions Moata platform



# Moata.

## The future is connected.

Moata is our digital twin platform, hosting solutions that use the power of data to solve today's most pressing infrastructure problems across the lifecycle.

Moata is open, secure, scaleable and adaptable, delivering predictive power in a geospatial context through advanced analytics and machine learning.

[moata.com](https://moata.com)