



Archeo

Tracing your business process

Evidi



Challenges in the market

Lack of overview

Complex

Information astray

Security

Time-consuming

Use of competence

How does Archeo solve the challenges?



Think about all the information that is sent between different systems and units in your company. Millions of messages that in their own way create a digital ecosystem.

Then imagine a system that provides full control and access to all these messages.

This allows you to quickly and easily find information or errors in the flow of information.

The extent of damage the error does depends entirely on how quickly it is localized and corrected.

Archeo offers a way to log data and message transactions that gives the user insight and overview of all business processes and offers simple and efficient search functions. This includes free text search across all content, and a wide variety of filters.

A cloud-based, user-friendly, access-controlled web-portal is available for searching, administration and statistics to access to all logged information.

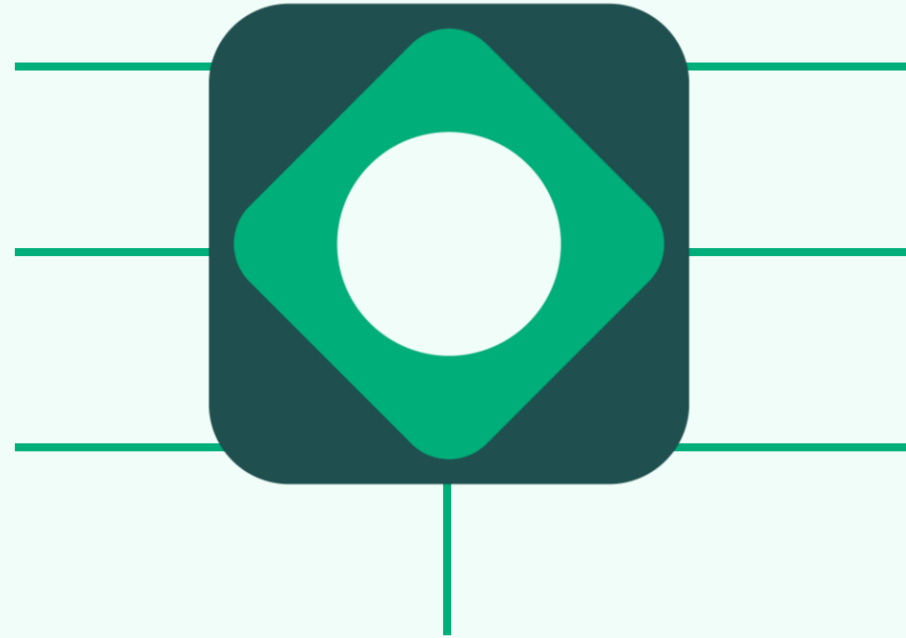
Evidi

Evidi

Get started quickly

End-to-end visibility

Access to original
message



Search and identify
transactions

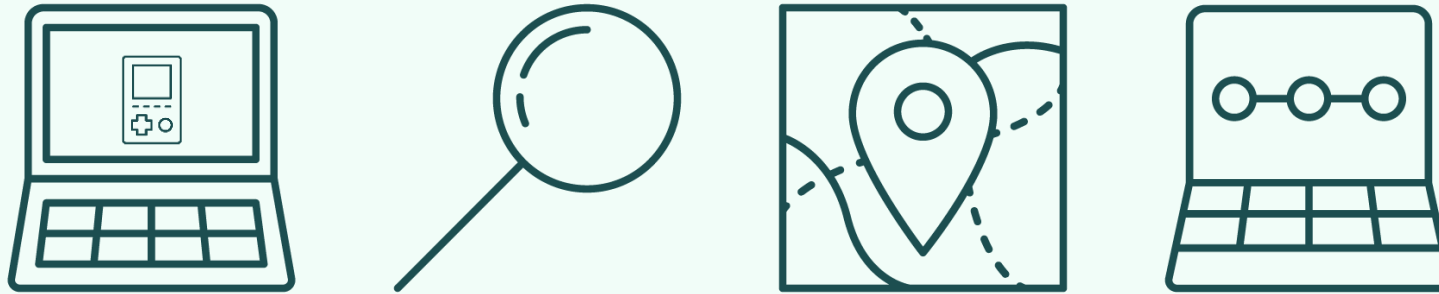
Alerting

Free text search

Access control

Evidi

The meaning of Archeo



If you order something online, you only need a tracking number to see the current location of your package. You can see where it's been and where it's headed. No one but you has access to this information. Archeo works the same way, only with data. If you've sent an invoice that hasn't reached its intended destination, you can go in and look at where it is and why it was stopped, without depending on your IT department

Evidi



Summary

Control your business process

Get end-to-end control and overview

Save resources

Easy access control

User friendly