



Partners on Portfolio Optimization for the ESG Era

2022/06/02

People

Create human-centric spaces where the indoor environment quality is optimal and well-being is at the center

Performance

Powerful digital & AI tools help pinpoint and respond to issues faster than ever.

Growing based on ESG, values & vision



80+

team members and growing



3.5M

square meters managed today



60+

sites of deployment



Deployed

- Retail
- Industrial
- Healthcare
- Education
- Commercial
- Warehouse complex

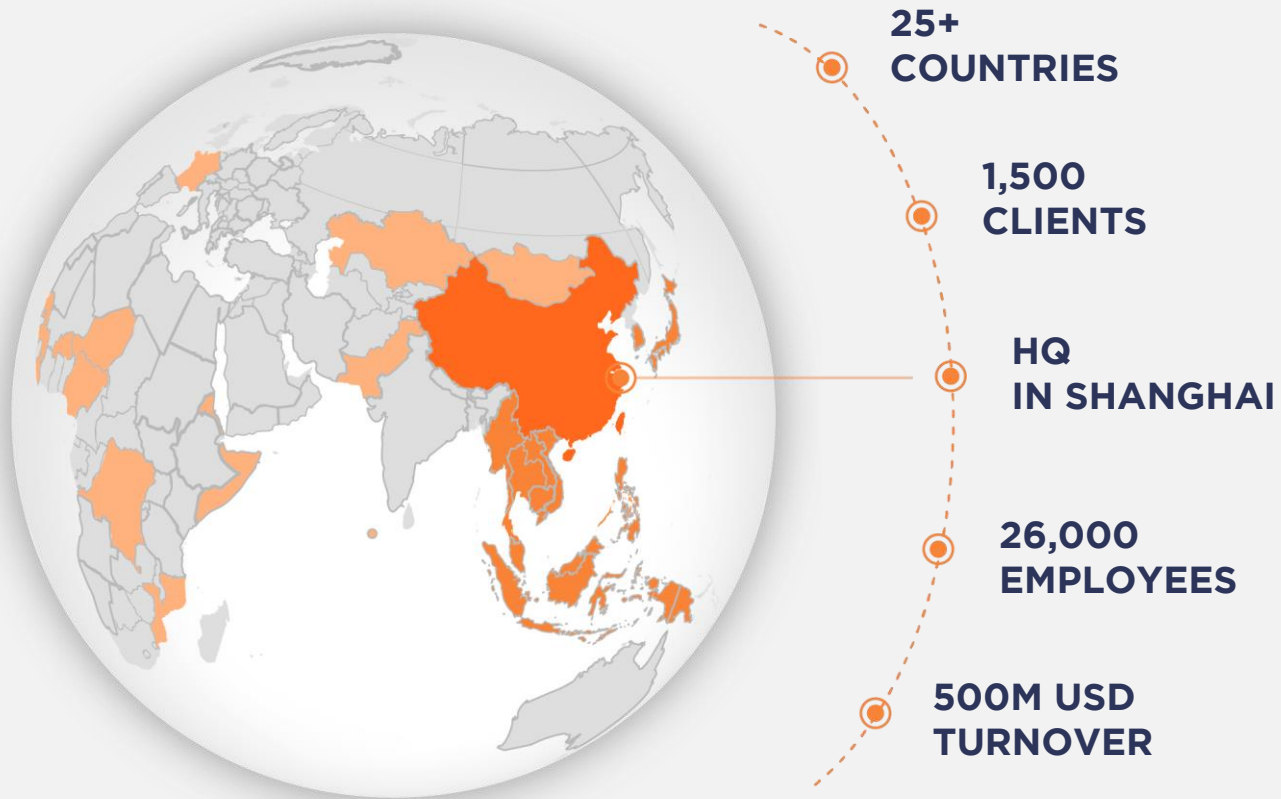
Planet

Accelerate net-zero carbon transitions by enabling better decision-making in the C-suite and among portfolio managers.

Portfolio

Ensure every positive step our clients make is backed by hard data and a generator of value in the age of ESG.





**Born in the right place,
incubated by the right
partner**

Aden

Akila was incubated by Aden Group, a leader in sustainable & data-driven management of buildings and business/industrial parks.

Founded in 1997 as a facility-management company, Aden has expanded its portfolio to ventures in clean and renewable energy; digitalization; property development; handling and automation; and venture capital.

The digital twin platform for the ESG era

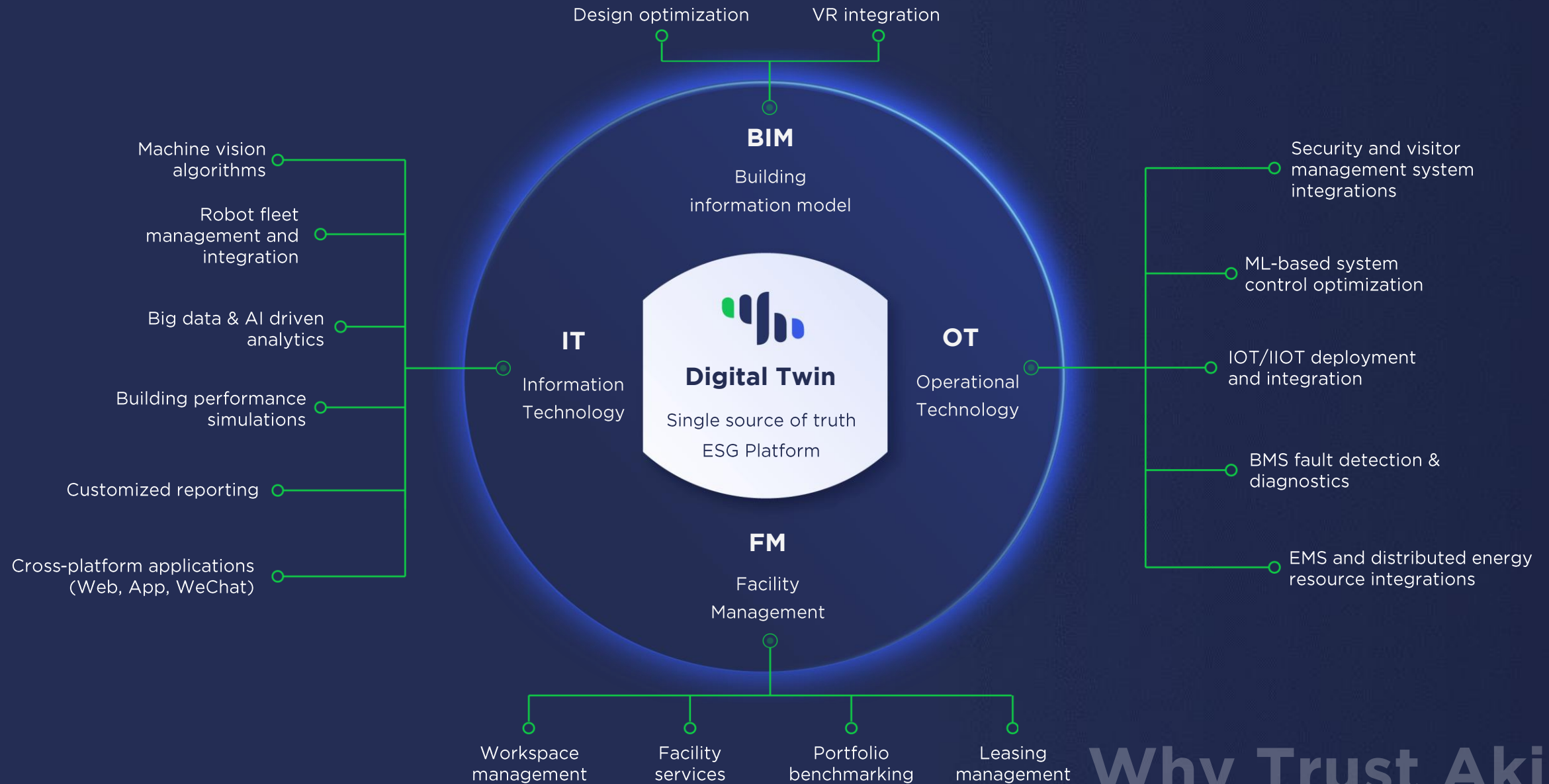


Akila is a digital twin platform designed to give portfolio managers the most powerful data tool for 360° property management and optimization.

The platform enhances every stage of the property lifecycle, linking and structuring every data point in every building you own in a digital thread.

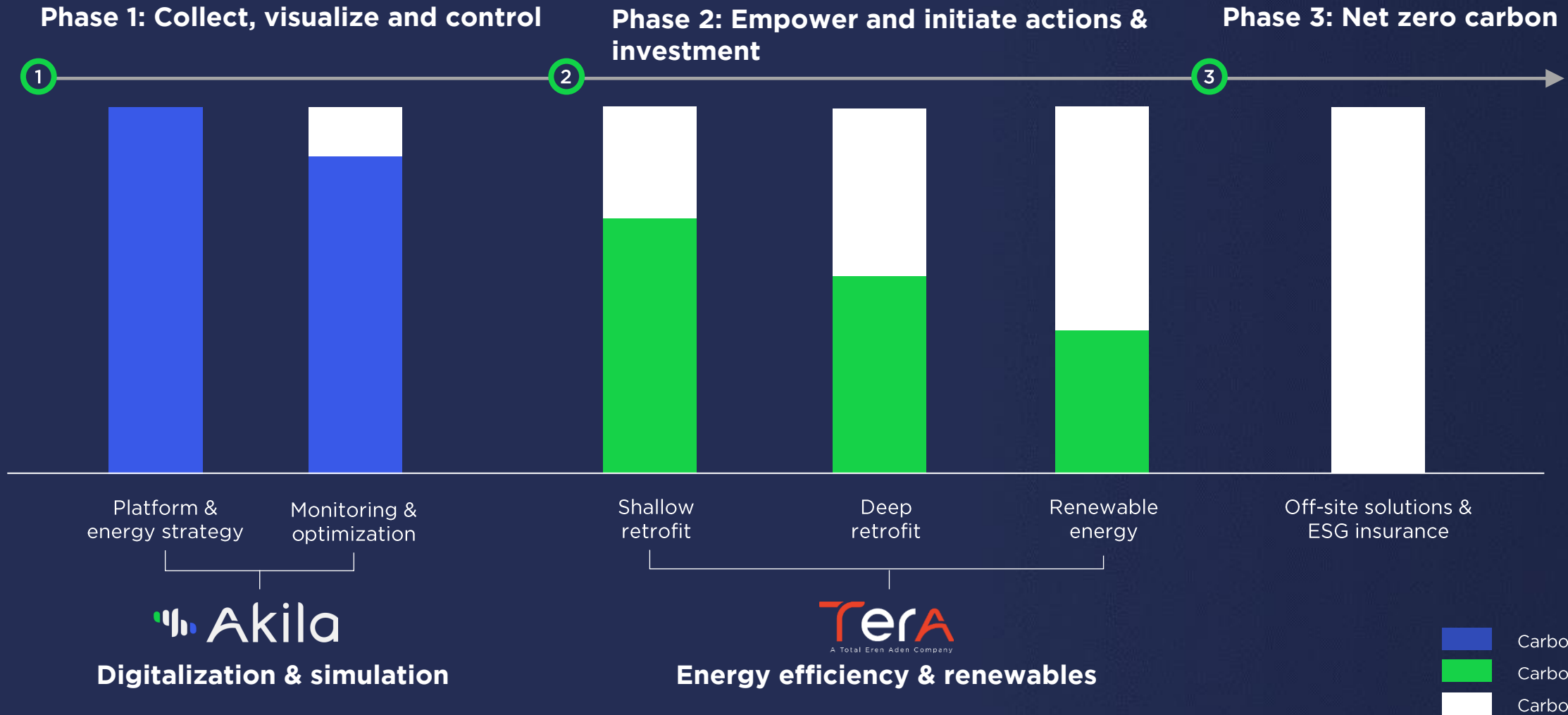


Single source of truth leveraging technologies



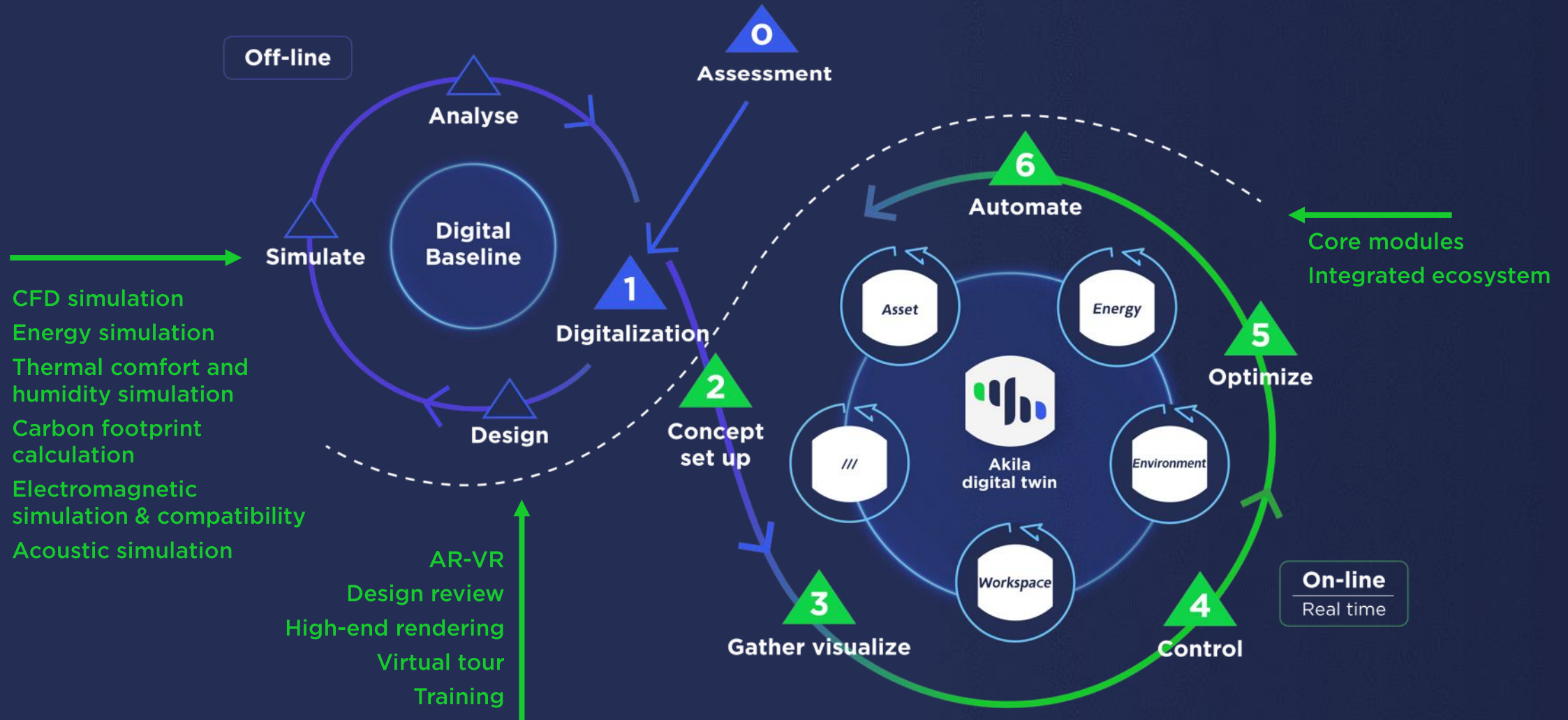
Why Trust Akila

The path to net zero carbon



What Akila Can Do

Akila - ESG digital twin platform - the continuous loop



What Akila Can Do

ESG reporting: streamline collection & aggregate verifiable data across your portfolio

Environmental

Comprehensive tracking, reporting & reduction of

- Energy
- Carbon
- Waste
- Air pollution

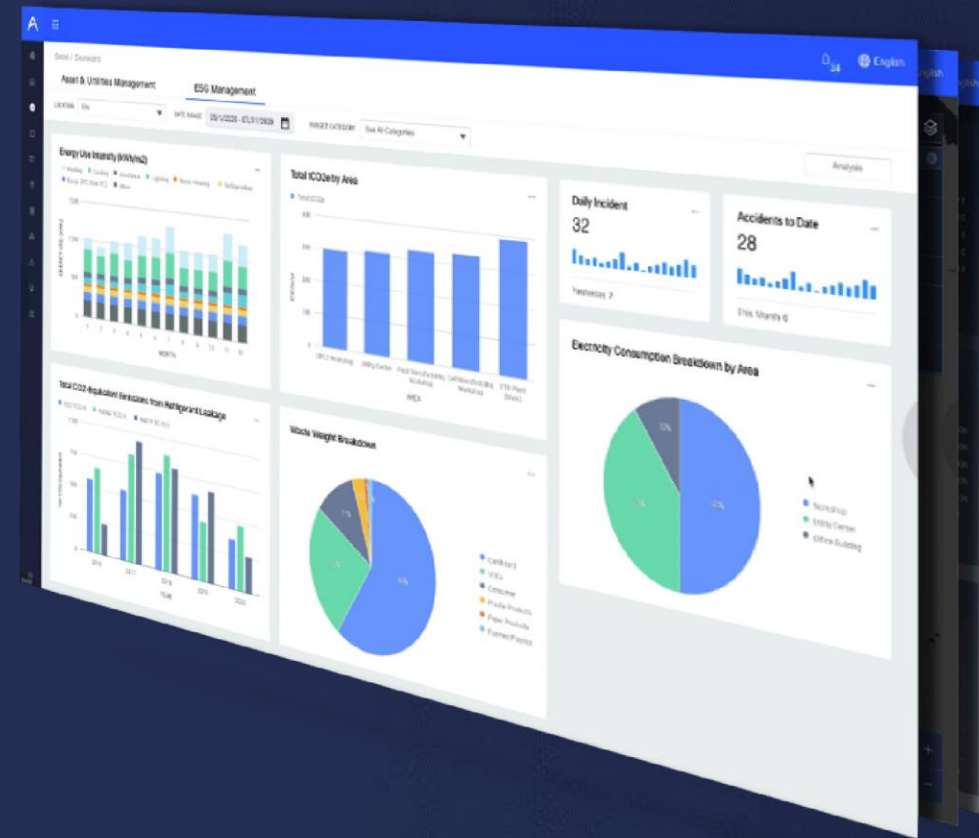
Social

Monitor & measure

- Workplace wellness
- EHS
- Supplier best practices

Governance

Akila provides the transparency and infrastructure for comprehensive ESG management.

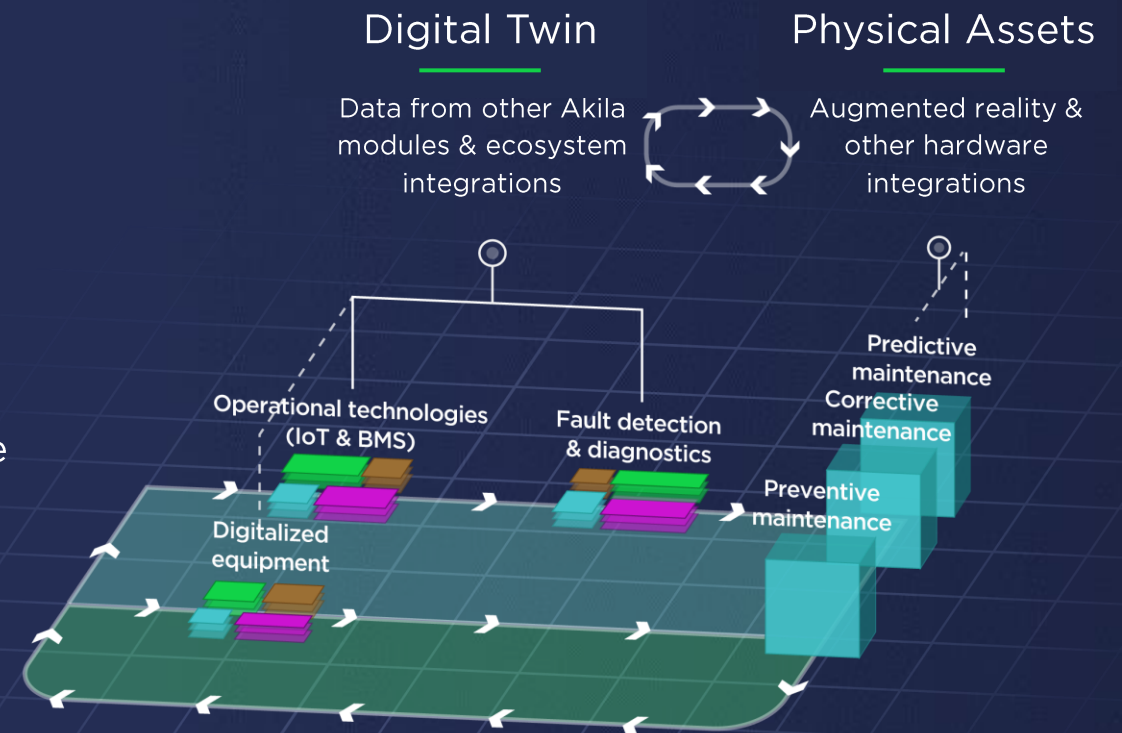


What Akila Can Do

Akila Asset: general service scope



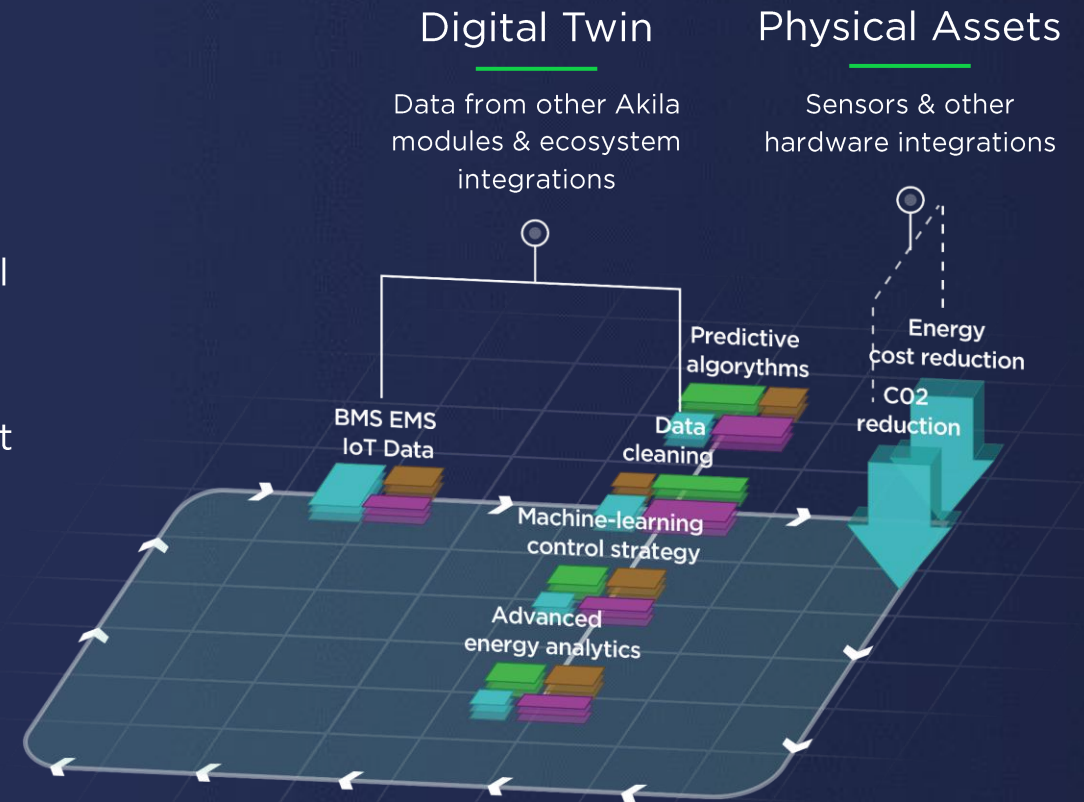
- Work order management
- Inspection management
- Predictive maintenance
- Preventive maintenance
- Corrective maintenance
- Management dashboard



Akila Energy: general service scope



- Energy benchmarking & cohort analytics
- Real-time monitoring and granular analytics
- Automated HVAC control strategies
- Energy cost management and tracking
- Energy saving verification
- Customizable reporting solutions



Akila Environment: general service scope



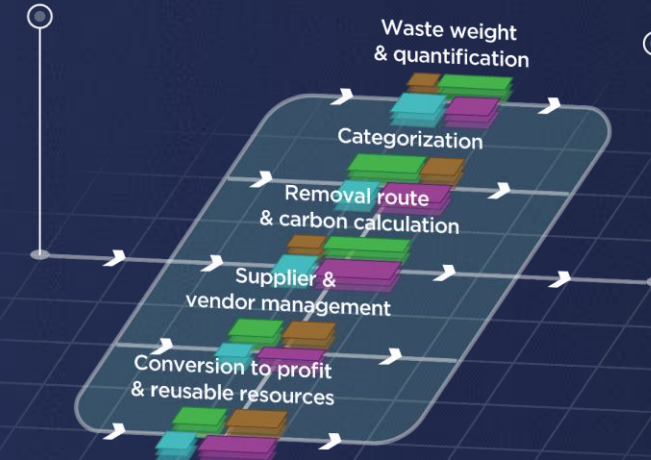
- Digitalized waste ledger
- Compliance management
- Vendor scheduling & coordination
- Database management
- Operational management

Digital Twin

Data from other Akila modules & ecosystem integrations

Physical Assets

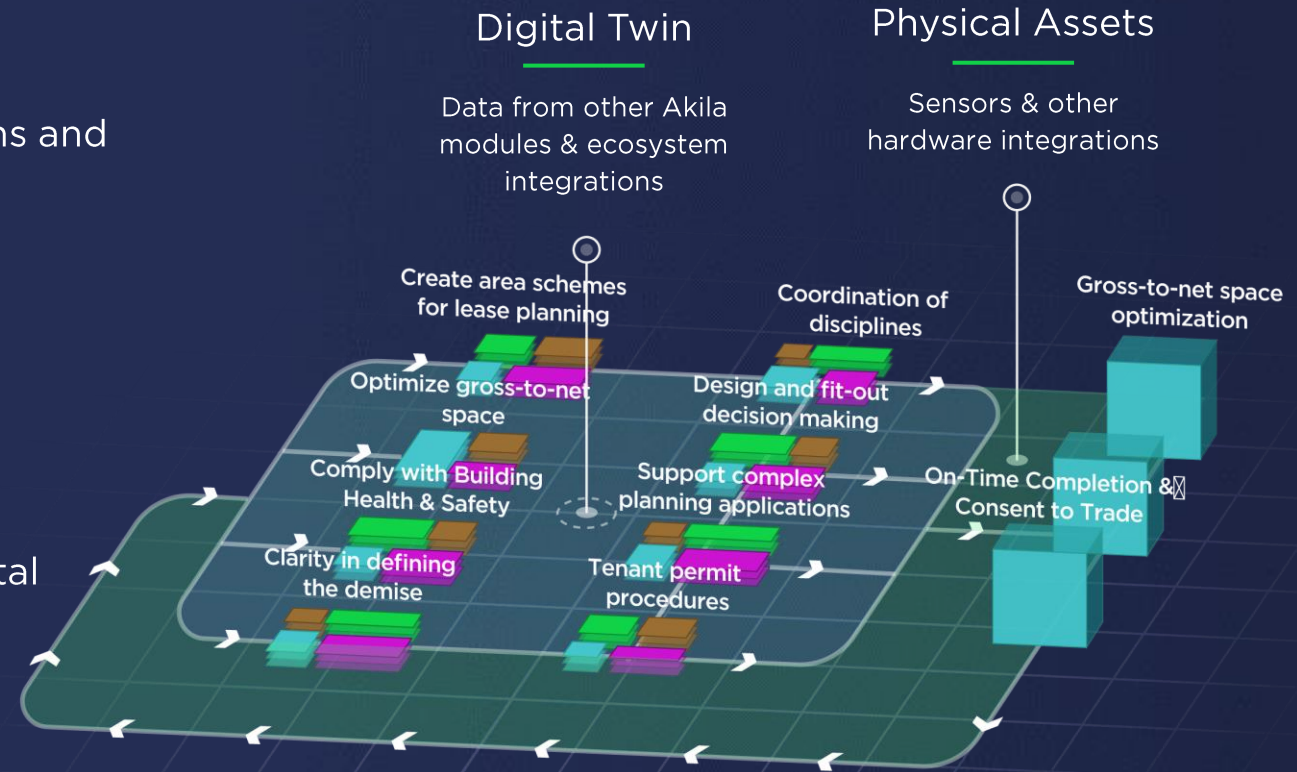
Sensors & other hardware integrations



Akila Leasing: general service scope



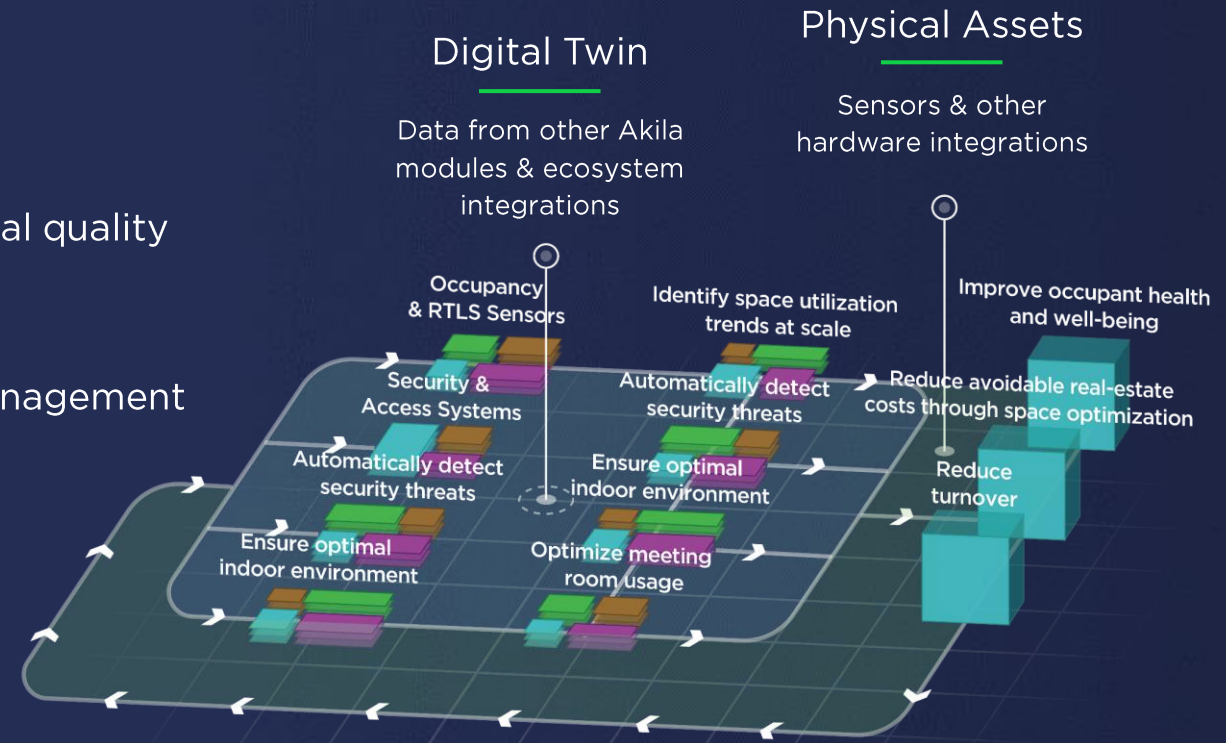
- BIM visualization
- Multi-site operations and maintenance
- Tenant portal
- Service request portal
- Analytics & report



Akila Workspace: general service scope



- Human health and well-being
- Visitor management
- Indoor environmental quality
- Facility booking management
- Service request portal
- Robot fleet management and integration



Case studies — Schlumberger (Shanghai)

Schlumberger

Brief

- A factory of 60,000 sqm
- High energy consumption
- Complicated BMS structure

Pain points

- Paper based process for maintenance tasks like work order, inspection, etc.
- No maintenance performance analysis
- Customer request can't be tracked

Solutions

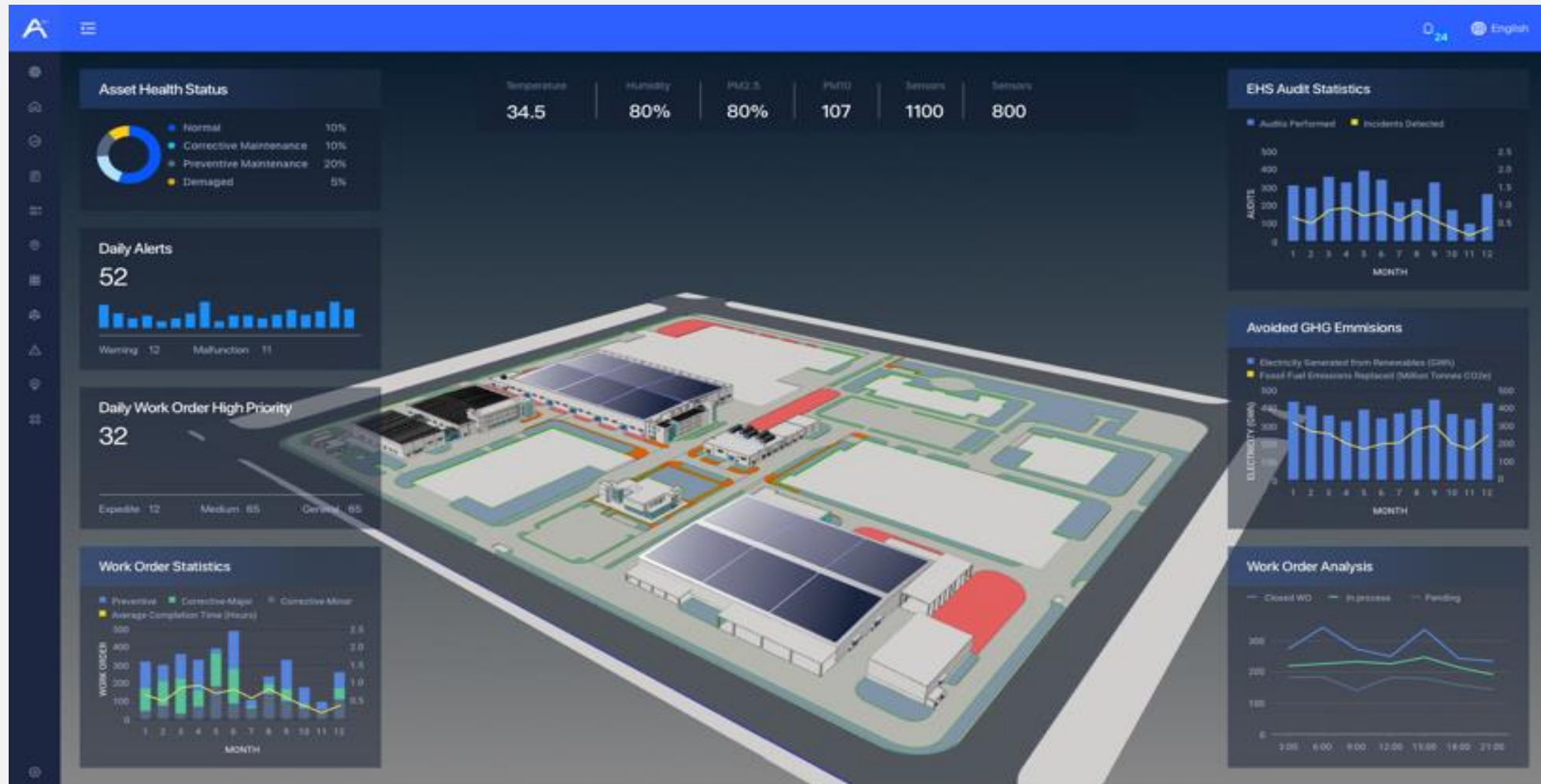
- Digital Twin
- Akila Platform
- Akila Asset

Achievements

- Digital operation & maintenance tool implemented on site
- Performance report and dashboard implemented



Main dashboard



Copyright Akila - Confidential Information 2022

Case studies — AstraZeneca (Wuxi)



Brief

- A factory of 90,000sqm
- High energy consumption

Pain points

- No centralized energy data
- No centralized view and analysis on energy consumption
- No link between the energy data and sustainability management
- Complicated system communication protocols

Solutions

- Digital Twin
- Akila Platform
- Akila Energy

Achievements

- Digital Twin of the whole factory
- 24/7 real time monitoring on the energy consumption
- Sustainability management dashboard
- Integrated all energy data onto one platform



Main dashboard



Case studies — IKEA (Jinan)



Brief

- A retail store of 35,000 sqm
- High energy consumption
- Complicated BMS structure

Pain points

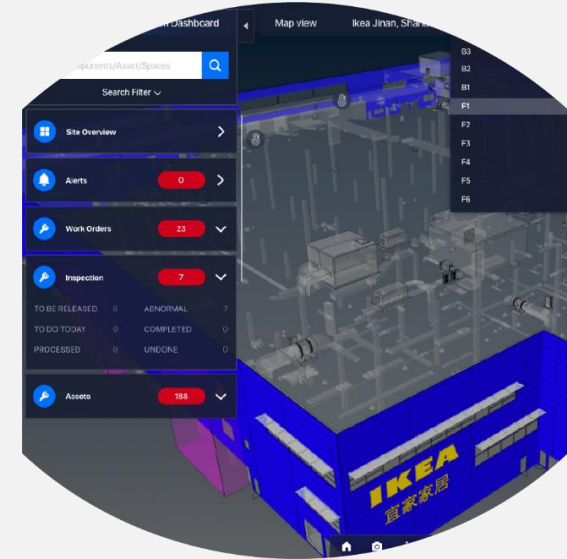
- No energy efficiency analysis
- No energy optimization control system
- Manual BMS operations
- No digitalized asset management
- Silos among energy sources
- No CO2 emission related dashboard

Solutions

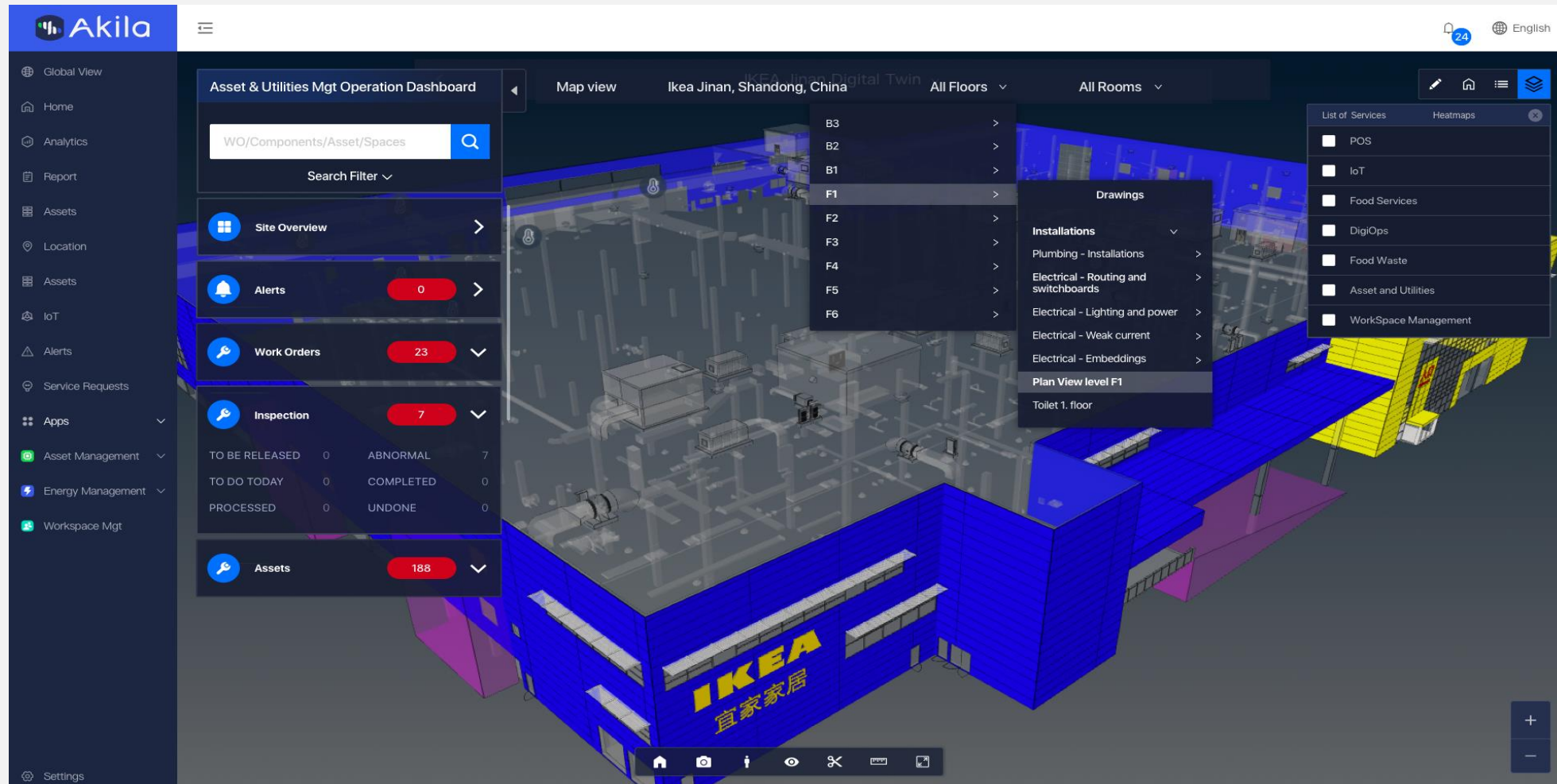
- Digital Twin
- Akila Platform
- Akila Energy

Achievements

- Digital Twin of the retail store
- BMS operation cost and management efficiency improved by 10%
- 24/7 real time monitoring on the conditions of the critical facility equipment
- Energy consumption on the HVAC central supply system reduced by 30%



Main dashboard



Case studies — West Wisdom Valley (Chengdu)



Brief

- A large-scale commercial complex of 700,000 m2, including offices and one hotel
- High energy consumption
- Complicated BMS structure

Pain points

- Complicated HVAC supply system scattered in multiple rooms in 4 areas
- Limited manpower due to tight O&M budget to cover large amount of footprint and complex facility system (HVAC, Electrical, Fire fighting, Lifts, etc.)
- No energy efficiency analysis
- No energy optimization control system

Solutions

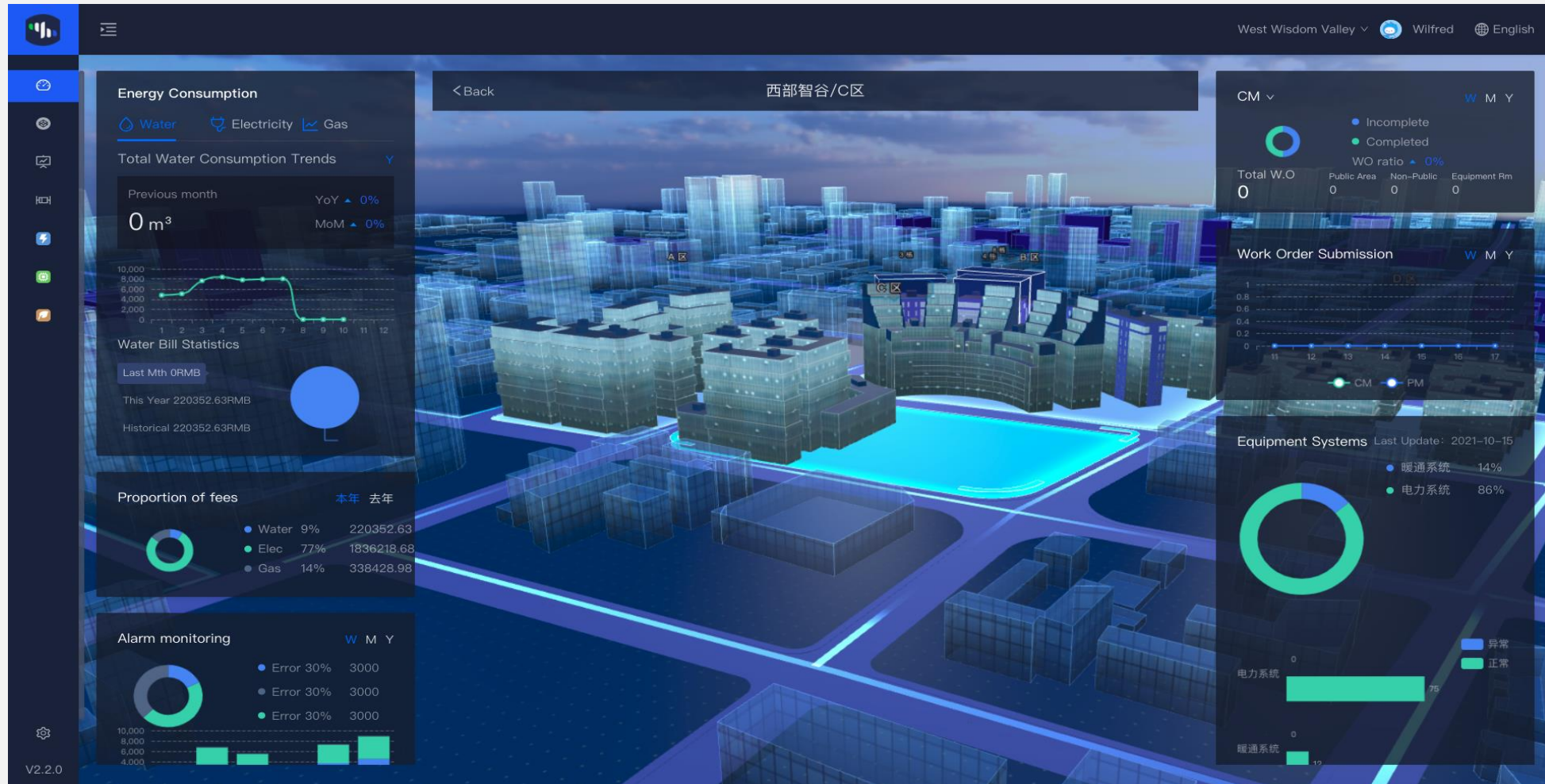
- Digital Twin
- Akila Platform
- Akila Asset
- Akila Energy

Achievements

- 10-15% reduction in energy costs
- 5-10% reduction in operational costs
- 7,354 tons CO2 reduction
- Link entire HVAC system (chillers, fans and central controller) to an IoT network and automate operation through machine learning via our platform

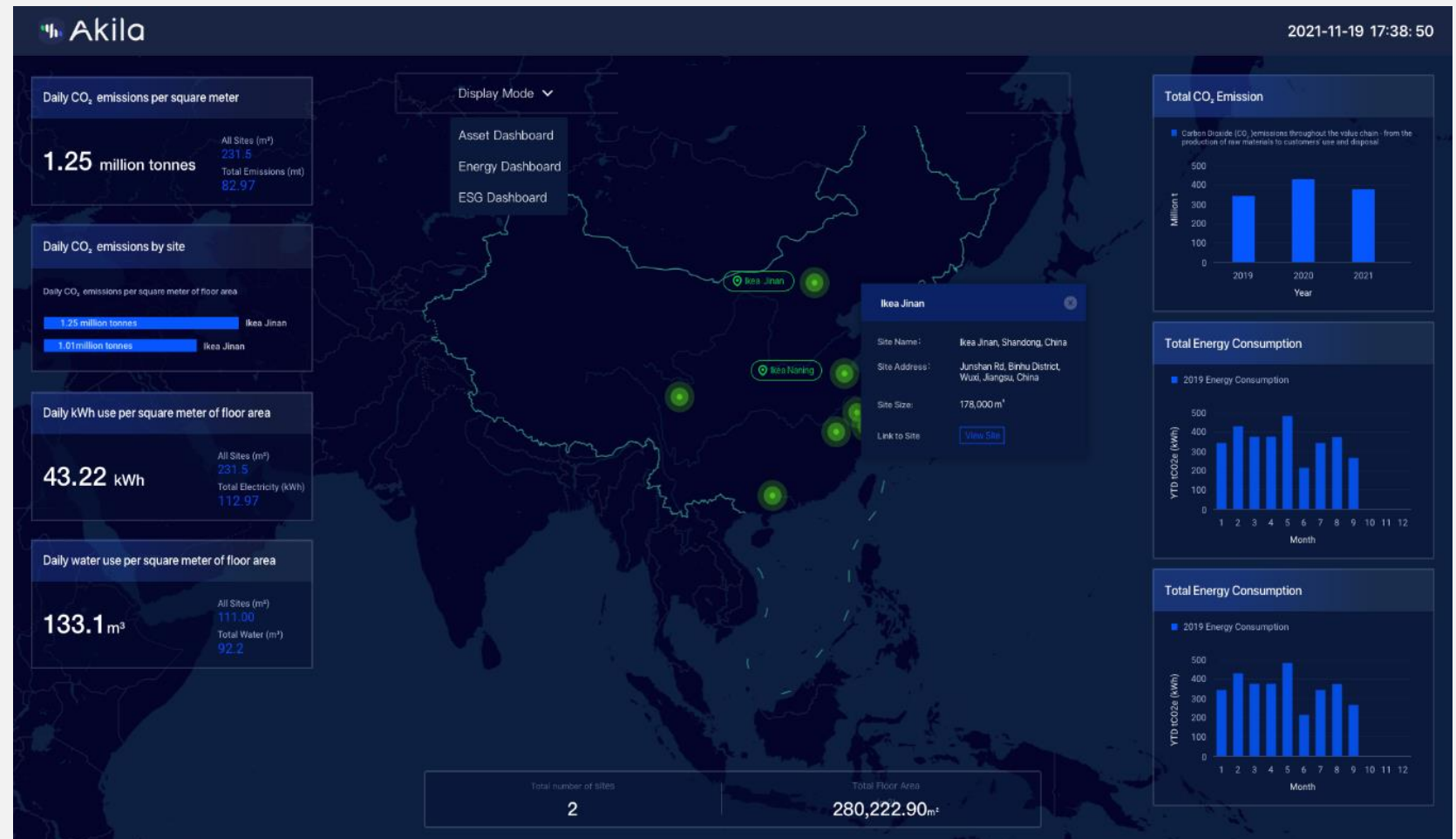


Main dashboard



Overview on all your sites in China

- Real time data of the energy consumption and relative carbon emission of each site
- Visualization of the real-time data for all the sites in China
- Comparable view on the data among different sites



EHS reporting and analysis

