

A large, abstract geometric graphic composed of numerous overlapping triangles in shades of red, purple, and blue, creating a faceted, crystalline effect. The triangles vary in opacity and color, with some appearing as solid colors and others as semi-transparent layers.

FILE ANALYSIS & MANAGEMENT

Files Cleanup

Defensible Deletion

GDPR and CCPA Compliance

Records Management and eDiscovery

Complete Information Management

ZL FILE ANALYSIS AND MANAGEMENT

For the past few decades, organizations have had little understanding or control of the documents lying in enterprise repositories such as file shares and SharePoint. As this data grows to massive volumes, new and continuing developments in the information management landscape now require organizations to manage it in-place.

Privacy regulations such as the General Data Protection Regulation (GDPR) and the California Consumer Privacy Act (CCPA) demand organizations find, remediate and manage personal data lying in enterprise file sources. Other continuing drivers include the expanding scope of functions such as eDiscovery and records management, migration to cloud offerings such as Office 365, and files cleanup for ROT and sensitive data. These factors contribute to create a strong need for organizations to gather actionable insight into their data and apply intelligent classification and management policies for better retention management and defensible deletion.

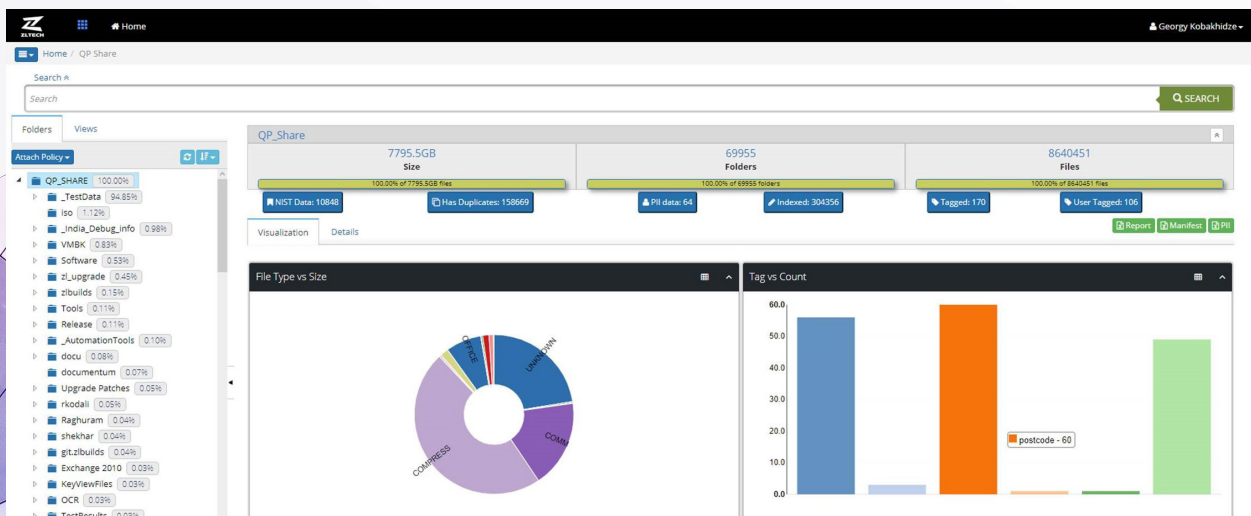
ZL File Analysis and Management

ZL File Analysis and Management (ZL FAM) enables organizations to analyze, search and manage enterprise file sources from a single platform. ZL FAM connects with enterprise data repositories such as file shares, SharePoint and other Office 365 documents to create a complete content index of all enterprise data, also scanning metadata such as author, created date, modified date, and other metadata that could be potentially useful. ZL FAM goes beyond analytics, offering comprehensive and scalable information management for today's large enterprises.

Complete Insight

ZL FAM provides users complete analysis of data via a visualization dashboard that can be customized to display various metadata and content attributes. These visualizations are often used to display which types of files a source holds, when the files were created and last accessed, and who they are

Select a file source or folder to view a customizable metadata analysis dashboard. Visualizations can be clicked to generate an updated analysis of the selected data.



used by. ZL's flexible BigDB technology enables fully interactive visualization features so users can select precise subsets of data and the visualization dashboard will automatically reconfigure on the fly to provide analysis of the selected data.

Enterprise Search

ZL's GRID architecture provides massive scalability, enabling searches of up to billions of documents. Users can perform search queries across specified sources or the entirety of enterprise data. ZL FAM allows for complex expressions such as proximity, wildcard, and Boolean logic, crucial to finding personal data for GDPR and privacy purposes or for advanced eDiscovery searches. Users can quickly preview the returned documents to view keywords as they appear in context, conveniently highlighted, as well as utilize advanced analytics features on the returned documents.

Complete In-Place Management

ZL enables in-place management of documents in enterprise repositories such as network file shares and SharePoint sites, without the need for archiving. This includes both manual and auto-classification of data, utilizing important metadata and pattern-based tagging, which also serves to identify documents with sensitive and personal data. Users can then apply remediation policies such as delete, export, and legal hold, as well as advanced policies such as advanced retention, including event-based triggers—all while leaving content in its native location. ZL's advanced classification capabilities and management policies facilitate a wide range of use cases such as defensible deletion, in-place records and information management, and compliance with privacy demands such as GDPR's "Right to be Forgotten."

For content that requires archiving for use cases such as long-term records management and eDiscovery preservation, ZL is unique in its ability to provide a seamless pathway from in-place management to scalable archiving.

Results: PII Data

[Raw Query: +(ftFlags:2) +(hierDirId:1)] - Fol

Show 100 entries

Tag

Name	Size	Created	Last Modified	Last Accessed	Path
email.txt email	0.2KB	2018/04/09	2018/04/09	2018/04/09	File Shares/Ac
2012-community-colleges.csv phone number Support RCC4 General	18597.5KB	2018/04/09	2016/04/04	2018/04/09	File Shares/Ac
2013-community-colleges.csv phone number Support RCC4 General	18995.3KB	2018/04/09	2016/04/04	2018/04/09	File Shares/Ac
LotusPlugin_851.doc email 4 Years +	1155KB	2018/04/09	2009/10/14	2018/04/09	File Shares/Ac
exp.CSV email 4 Years +	2KB	2018/04/09	2009/10/23	2018/04/09	File Shares/Ac
11FreePLATEbookCovers.pdf Dispose email 4 Years +	256KB	2018/04/09	2008/05/23	2018/04/09	File Shares/Ac

Easily view document metadata and tags.

Cross Project Search

Criteria

Project Name: [x: Accounting] [x: http://dmcl-vshp-02/sites/zidemoteam] [x: Georgy public folder]

Dashboard Name: Select dashboards

File Name: Any of the words Enter file name

Content: Proximity offer letter Appears Within 2

Exclude Content

Date Created: Any Date From Date And To Date

Date Modified: Any Date From Date And To Date

Date Accessed: Any Date From Date And To Date

Tags Include: Any Tag [x: pii]

Exclude: Any Tag Select exclusion tags

Flags Include: All Flags Select inclusion flags

Search

Search across enterprise data with an intuitive and customizable query builder.

Select Action For Tag

Archive Copy Delete Leave Move Quarantine Record

Submit Close

Tags

Upload Metadata Spec Content Spec PII Spec Tag Actions Reload tags

- Root
 - Action
 - Age
 - 4 Years +
 - Auto
 - Departments
 - PII
 - Record Metadata
 - RM Workflow
 - Approved + Create Tag
 - Dispose - Delete Tag
 - Exception
 - Legal Hold ↔ Apply Action

Create and apply tags based on searches, content patterns, and metadata. Tagged documents can be managed with policies such as deletion, retention, or archived for more advanced options.

I ONGOING GOVERNANCE

Unlike any other solution in its ability to govern enterprise silos, ZL File Analysis and Management offers granular in-place management within a single platform and a massively scalable architecture that can support billions of documents and petabytes of data. Enterprises are provided centralized control for global deployments and the capability to create customizable access privileges so that each respective admin can review and oversee management policies of the data relevant to them.

Whether an organization requires ongoing, policy-based management of siloed data for compliance purposes, or simply to clean up dark data before migrating to the cloud, ZL File Analysis and Management offers a centralized platform for true control over enterprise data.

Awards



Gold Stevie® Award in 2018 International Business Awards for Best Content Analytics Solution



KMWorld Trend-Setting Products of 2018