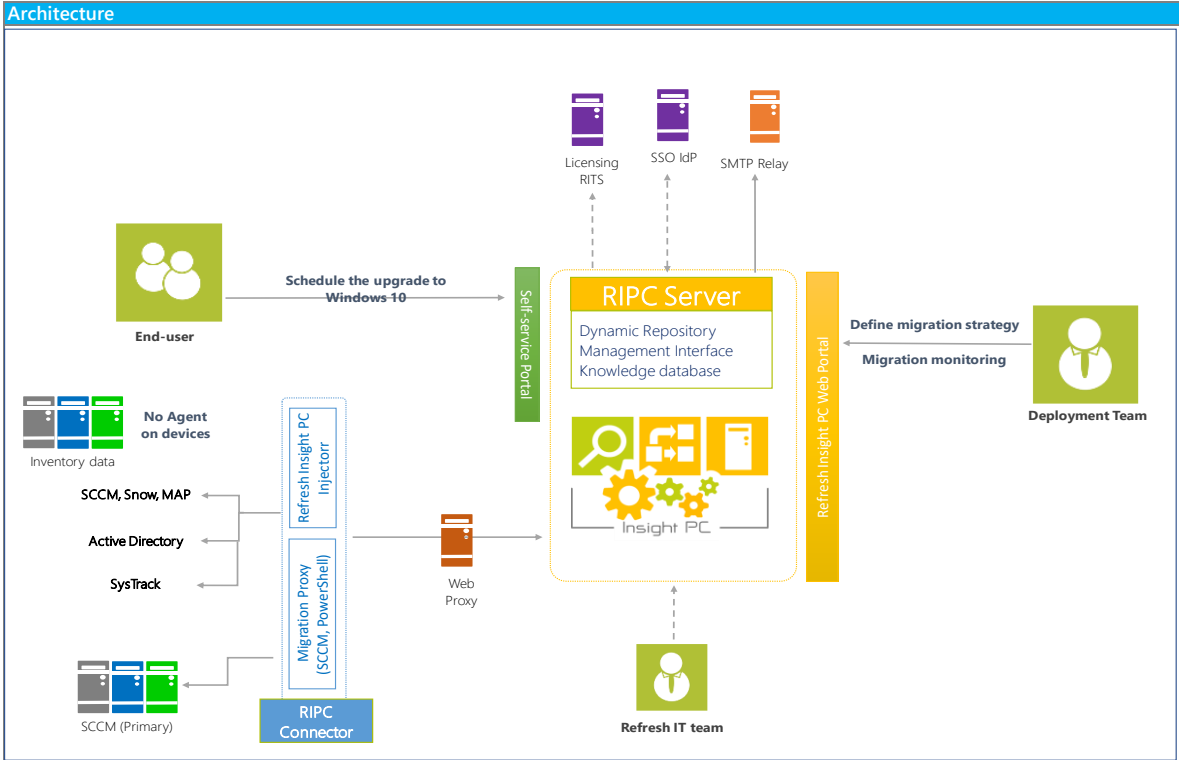


REFRESH INSIGHT PC

Deliver an end-to-end Windows 10 upgrade Experience in self service
Refresh IT Solutions - Product Datasheet

Starting with Windows 10, the rhythm of Windows upgrades delivered by Microsoft accelerates. The challenge for companies is to make available the new feature releases of Windows to a larger number of users, a growing number of **PC or tablets**, while controlling the successive **waves of upgrades** to Windows and the **application life cycle**.

It is to meet these new challenges and leveraging both our 10 years' experience of Windows deployment projects in large organisations as well as Microsoft recommended methodology, that we have created **Refresh Insight PC**. This software offers a complete experience of the move to Windows 10 and future versions, through a continually enriched **knowledge base** providing an analysis of the eligibility of the assets (hardware and applications), a **self-service portal**, a **communication plan** to users, an execution of the migration leveraging the existing technical tools deployed in the organisation, all this remaining, of course, under the control of IT.



RIPC Server - SaaS mode

- No requirement

RIPC Server- Requirements for OnPremise installation (example for 5000 devices)

- Windows 2016 / 2012R2 Standard Edition
- 8GB of RAM
- IIS 8.5
- Quad Core 2.66Ghz
- 150GB of disk space (1 system partition of 60GB, 1 data partition of 80GB)
- SQL Server 2016 (Express edition supported until 2500 devices)

RIPC Server- Requirements for Azure installation (example for 5000 devices)

- Azure Virtual Machine D2 v2
- Azure SQL Database Premium 1

RIPC Proxy Machine requirements

- | | |
|---|-------------|
| Operating System | Memory |
| Windows Server 2012R2 / 2016 or Windows 7/8.1/10 | 4GB minimum |
| Disk space | |
| Installation files : 30 MB / Logs and temporary data < 200 MB | |

Refresh Insight PC Injector requirements

Synchronization from SCCM

Supported SCCM versions

- Microsoft System Center Configuration Manager 2007 or higher

Service Account

- Read access to SCCM database (or .bak file) with inventory data

Network

- SQL network flow is open between RIPC Proxy machine and SCCM database
- Inventory data transferred from the RIPC Proxy machine to Refresh Insight PC platform : ~10KB per device.

Synchronization from MAP

Supported Microsoft Assessment Planning Toolkit versions

- Microsoft Assessment Planning Toolkit 9.3 or higher

Network

- Inventory data transferred from the connector to Refresh Insight PC platform : ~10KB per device.

Synchronization from Active Directory

Service Account

- Read access for each domain to request

Network

- LDAP flow is open between RIPC Proxy machine and domain controller to request

Refresh Insight PC SCCM / PowerShell Proxy requirements

Software dependencies

- Microsoft System Center Configuration Manager 2012R2 SP2 or higher
- Access to SCCM primary server

Service Account

- Read access to SCCM database (or .bak file) with inventory data
- Member of "Operations Administrator" SCCM build-in security role

Network

- WMI network flow is open between RIPC Proxy machine and SCCM primary server
- SQL network flow is open between RIPC Proxy machine and SCCM database

Features

Import collected data

Connectors

- Microsoft SCCM 2012R2 SP2 or higher, totally or filtered on collections (displayed collections can be filtered on the interface)
- Microsoft Assessment and Planning Toolkit 9.3 or higher
- Snow inventory software import (only in completion mode)
- Lakeside Systrack inventory by Web Services
- Excel file (.xlsx)
- Any SQL Server sources (need to configure the mapping between RIPC repository and sources)
- Active Directory (properties of user and computer objects) - only associated with SCCM retrieval

Configuration

- Add custom properties to synchronize for the current customer (types supported: string, date, boolean, timespan, integer, float, list of objects)

Offline mode

- Import data collected from a PC/Server without connection to RIPC server

Customer

Customer management

- Create new customers
- Generate setup of Refresh Insight PC Injector (to synchronize SCCM, MAP, Systrack, Snow or Excel sources)

Rights management

- Set privileges for each operator
- Grant operators to locations
- **Grant privileges based on SSO groups (only available if not enable for Self service pages)**

Dashboard

Connection to the dashboard

- **Integration with Azure Active Directory for authentication and roles management (only available if not enable for Self service pages)**

Devices dashboard

- Rollout status (Distribution of devices in 5 phases : Assess, Decide, Batch & Schedule, Process, Drive)
- List of actions to take to move forward
- SAC and LTSC release mode (choose target version of Windows)

Charts

- View operating system distribution per RIPC phases
- View top 20 of relevant products/versions installed
- View top 20 of products/versions to install (based on remediation rules)
- View similarities (group of devices with same applications to reinstall)

Devices overview

- View devices grouped by locations
- View relevant products/versions installed on devices
- View eligible processes for a device
- Short device inventory (model, RAM, Operating system, disks...)
- Export full device inventory in PDF format

Filter

- Filter by device name
- Filter by location

KDB Management

- Manage your own KDB

Products/Versions

- View list of products/versions
- Filter by Product/Version/Vendor/Type
- Duplicate a product/version
- View product/version details
- Create a new product/version
- Change Release date / End of support date
- Change compliancy of a product/version for each build of Windows 10
- **Manage compliancy level (To Test, Adopted, Compatible, Not compliant)**
- Set relevant product/version
- Delete a product/version
- Update product/version information with Excel file
- View signatures associated to a product/version
- Create dependencies between product/version
- Assign package to a product/version
- Import packages with Excel file
- Set the date for availability of a package

Signatures

- View unknown signatures for the current customer
- Ignore list of unknown signatures
- View list of signatures
- Filter by signatures
- Associate a signature to a product/version
- Add a new signature
- Delete a signature
- Import/Export signatures

KDB Content

- Standard KDB contains only products of the following list of publishers (Microsoft, Adobe, Oracle, HP and Symantec)

Product owners

- Create/Modify/Delete products owner
- Communicate web portal URL to products owners
- Delegate rights to products owners to set tests status
- Delegate rights to products owners to set product compliancy for each build of Windows 10
- Delegate rights to products owners to set remediation rules
- Delegate rights to products owners to set packaging
- **Securisation of AppOwner portal via Azure AD SSO (only available if not enable for Dashboard)**
- **Manage AppOwner users with Excel files (Import/Export)**

Reporting

Management

- Users can subscribe to reports generated periodically

Assess

- Software rationalization (PDF)
- Global Eligibility report (Excel)
- Device inventory (PDF)
- Products owners (PDF)

Decide

- Packaging priority (Excel)
- Persona Eligibility Report (Excel)
- Remediations (Excel)

Process

- Rollout forecast (Excel)
- Rollout status for last 24h (Excel)
- Full rollout status (Excel)

Drive

- Survey Report (Excel)

Assess

- Exclude devices from the scope
- Export devices in Excel file
- Delete devices
- View all devices synchronized in Refresh Insight PC

Decide

Filters

- Create filters
- Filter on inventory data
- Filter on installed products/versions
- Filter on products/versions to remediate

Persona

- Create persona to identify population based on filters, or on Active Directory groups
- Add mandatory applications for personas
- Allow self-service applications for personas

Process

- Duplicate a process template (based on Windows Upgrade or Replacement templates)
- Associate communication plans and processes
- Associate surveys and processes
- Associate existing SCCM OSD tasks sequence or PowerShell script
- Set the list of personas granted to use a process
- Create eligibility filters
- Change the timeline of the communication workflow

Communication plan

- Duplicate communication plan

Remediation

Remediation of products/versions

- Define a remediation rule for a product (or product/version) and locations
- Remove a remediation rule
- Ignore product/versions massively
- Assign package to a product/version
- View the list of packages available in Refresh Insight PC
- Filter on application compliancy (compliant, upgrade needed, not compliant, unknown)
- Filter on packaging status (No package, not ready, ready)
- Filter on remediation rule (product, version, location, target)
- Export remediations (Remediation report in Excel format)

Communication

Massive communication

- Send emails to users (adoption communication, connection to self-service...)
- Communicate in user language
- Insertion of dynamic information in the communication
- Edit communication plan from Microsoft Word (Refresh Insight PC Word add-in)
- Track emails sending
- **Send Meeting Requests with migration date on communication messages**

Self-service

- Display communication according to the communication plan

Self-service

Self-service web portal

- Select the device to upgrade
- Select the process according to personas and eligibility of the device
- Schedule the upgrade according to the capacity planning
- Select list of self-service applications to install after the upgrade
- Reply to the questionnaire
- Validate to start the process
- Bypass useless pages (selection of devices or process if only one available)
- Possibility to refuse migration if allowed on process configuration
- Customize Self-service pages with customer CSS and logo

Self-service update

- Reschedule the upgrade according to the capacity planning

Batch & Schedule

Capacity planning

- Specify daily quota per process / location
- Import/Export quota from Excel file
- See quotas in calendar

Order

- Send an email to the primary user of a device to schedule the migration according to the capacity planning
- Schedule the migration date from Refresh Insight PC administration console

Process

Forecasting

- Planning of scheduled migrations for next weeks

Communication

- Send email at any moment of the process (T-Minus)
- Insert dynamic information in emails
- Send user acceptance at the end of the migration

Monitoring

- Monitoring processed in real time
- Drive and track status of SCCM OSD & packages deployment (using RIPC SCCM Proxy)
- Drive and track status of PowerShell scripts execution (using RIPC PowerShell Proxy)
- Identify software installation as blocking to stop process if failed, based on Persona
- Comment process execution (single or mass update)
- Delete process (single or mass update)
- Reschedule/Stop a process (single or mass update)
- Manage OSD time-out by Process

Proxy

- Execution of Proxy without interactive Windows session

Survey

Administration

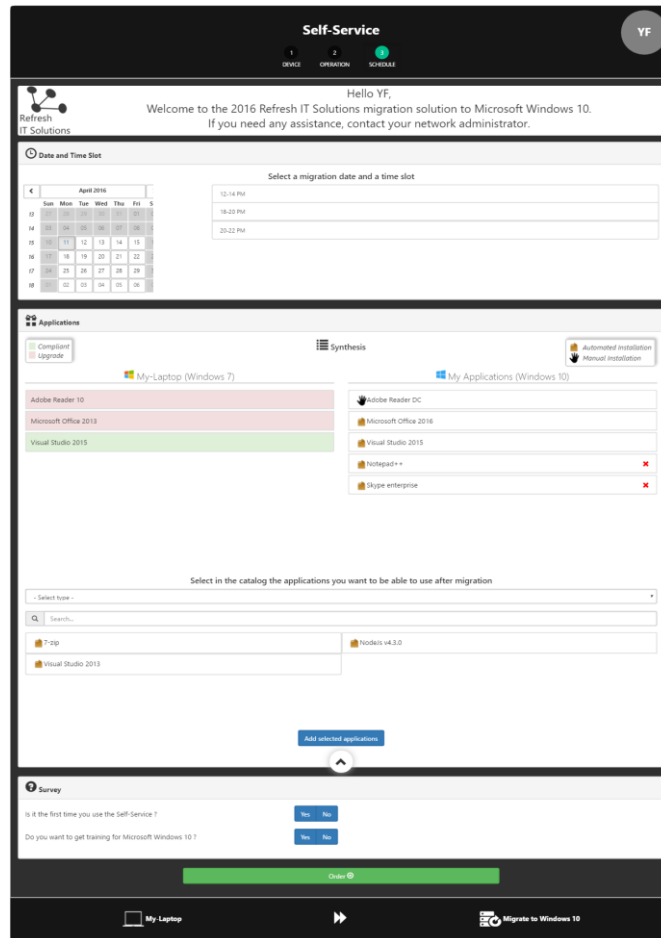
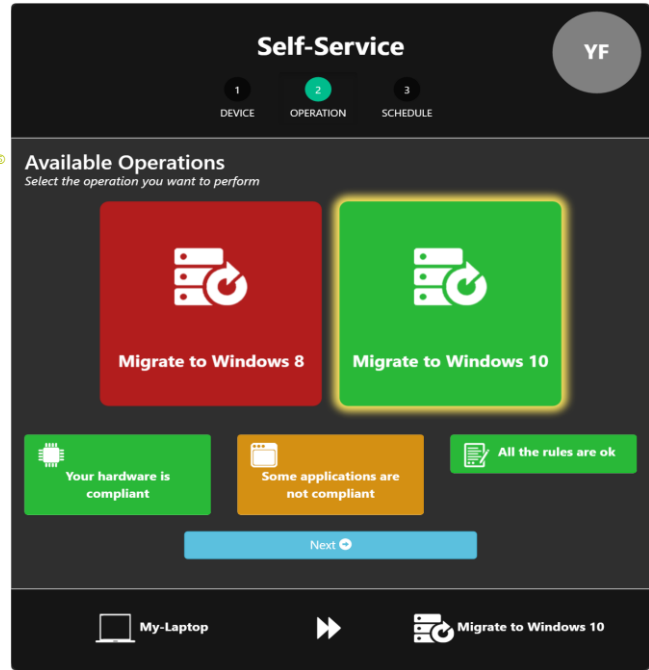
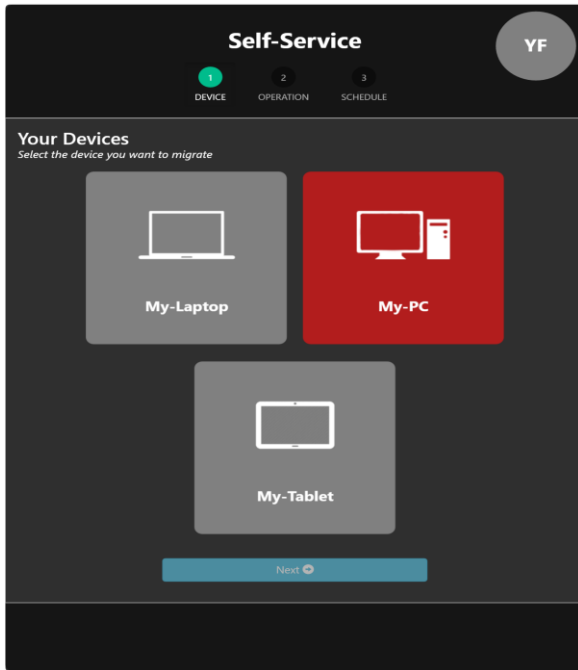
- Create/modify/remove questionnaires
- Add/modify/remove yes/no questions
- Set Mandatory / optional questions
- Add/modify/remove comments
- Export questionnaires in Excel format

Self-service

- Display questions associated to the selected process

Self-service portal

- Select target device
- Select eligible process
- Schedule and validate



Rollout status

Refresh Insight PC

Windows 10 Build 1607 POC Customer AA

57

Devs with inventory issues

1976

Ineligible Devices

2704

Devices to schedule

533

Devices processing

0

Devices running selected Windows version

Assess

Connectors configuration Application KDB Hardware KDB Application remediation Processes Eligibility Surveys

Decide

Capacity planning

Batch/Schedule

Forecasting

Process

Rollout tracking

Drive/Usage

Actions to take	Count
No software inventory	57
Missing inventory data	11
Unknown model compliancy	170
Unknown products/versions	266
Unknown signatures	8086

Actions to take	Count
Not compliant products/versions	164
Devices without persona	238

Actions to take	Count
To schedule	1478
Locations not configured	1226

Your project progress

0.00%

Refresh Insight PC

Windows 10 Build 1607 POC Customer AA

57

Devs with inventory issues

Software KDB Coverage : Global

95.12%

Software KDB Coverage : Unit

64.36%

Distribution of devices in assessment

Step	Name	Device model	RAM Size (MB)	Operating system
<input type="checkbox"/>	AM008936	OptiPlex 3020M	8109	Microsoft Windows 7 Professional
<input type="checkbox"/>	AM009750	OptiPlex 3020M	8109	Microsoft Windows 7 Professional
<input type="checkbox"/>	AM2774	OptiPlex 760	3965	Microsoft Windows 8 Enterprise

Refresh Insight PC

Decide

1976
Ineligible Devices

Decide

Processes

- 533 Windows Upgrade
- 0 Windows Upgrade UA

Personas

- Windows 7 Devices

Persona Ineligibility Chart

Process Ineligibility Chart

Actions to take

Actions to take	Count
Not compliant products/versions	164
Devices without persona	238

Persona (128)

Hardware (1708)

Application (50)

Business (0)

View eligibility rules not met

Decide - Remediation

Refresh Insight PC

Windows 10 Build 1607

POC Customer

Assess > Remediation

Update remediation

Product: 1Password

Version: 1.0

Location: All locations

Target: 1Password 4.6

Change Cancel

Product	Version	Location	Target
360 Total Security	6.6	*	360 Total Security 8.8
360 Total Security	7.2	*	360 Total Security 8.8
4K Video Downloader	3.5	*	4K Video Downloader 4.1
4K Video Downloader	3.6	*	4K Video Downloader 4.1
7-Zip	*	*	7-Zip 16.04
7-Zip	4.43	*	7-Zip 16.04

Define remediation rules for a product or a specific product/version

Refresh Insight PC

Decide > Filters

Filters

Personas

- All
- Scanned by Windows Upgrade Analytics Agent
- Windows 7 Devices

Hardware eligibilities

- Hardware not compliant with W10

Application eligibilities

- Applications not compliant
- Applications with unknown compliances
- Insufficient KDB coverage
- Packages are not ready

Business eligibilities

- No email address for primary user
- Process in progress for another target
- Ready to upgrade in UA

- Create your own eligibility rules

Decide - Process creation

Refresh Insight PC

Decide > Processes

Processes

Number of processes : 2

Templates

- Windows Upgrade
- Windows Upgrade UA

Communication plan

- Communication plan for Windows Upgrade 0
- Communication plan for Windows Upgrade 1

Processes

- 533 Windows Upgrade
 - Personas**
 - Windows 7 Devices
 - Add an existing persona
 - Application eligibilities**
 - Insufficient KDB coverage
 - Packages are not ready
 - Add an existing application eligibility
 - Hardware eligibilities**
 - Hardware not compliant with W10
- 0 Windows Upgrade UA

- Design your process based on templates on the shelves

Administration console

Decide- Timeline designer

Time line designer

Move scenario on the timeline to change the T-minus of allowed steps then save your changes. 'O' is a date relative to the order date. 'D' is a date relative to the migration date.

N Migration scenario, used as a reference

Date Pivot

N The relative date cannot be changed

Date Fixed

N Date can be changed, click on the scenario

Date Enabled

N Drag left or right to change the relative date

Date Moving

The diagram shows a horizontal timeline with four numbered steps:

- Step 1:** First Reminder of migration information. Date: D-5 H09:00. Label: Reminder #1.
- Step 2:** Second reminder of migration information. Date: D-1 H09:00. Label: Reminder #2.
- Step 3:** Operating system rollout. Date: O+5 H20:00. Label: OS Install.
- Step 4:** User acceptance for the migration. Date: D+1. Label: User acceptance.

Save Cancel

- Change the timeline of communication workflow

Decide - Add-in for Word to change communication plan content

The screenshot shows a Microsoft Word document titled "Communication plans" with a sidebar on the right. The document content includes:

- Header: "Do great things with the best Windows ever"
- Section: "Familiar from the start"
- Text: "You're already an expert with the familiar Start menu, task bar, and desktop. Live tiles provide streaming updates of what matters most, instantly"
- Text: "Windows 10 is designed to be compatible with the hardware, software, and peripherals you"

The sidebar shows a tree view of communication plan steps:

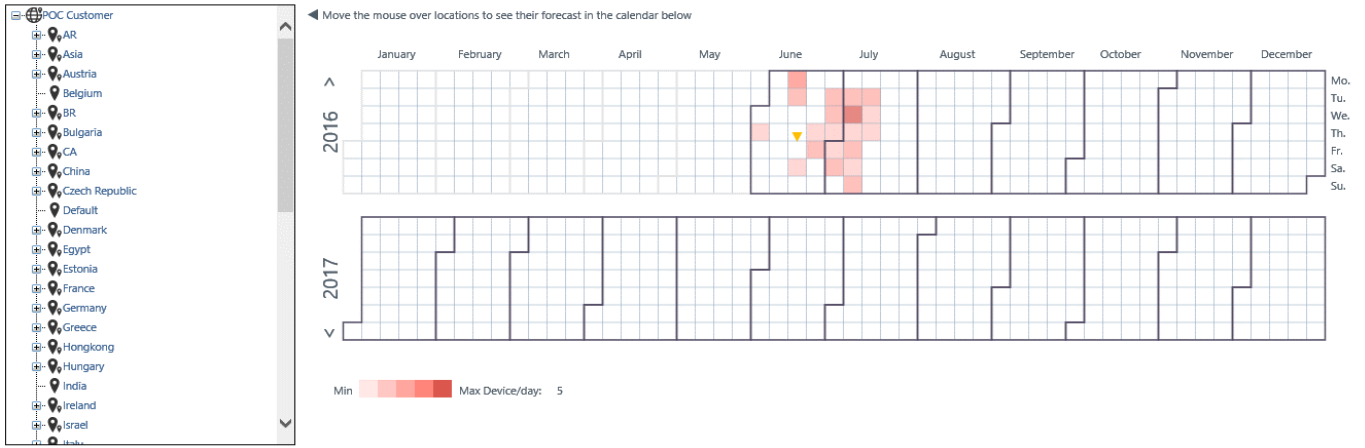
- Communication plan for Windows Upgrade 1
 - EN
 - E-mail
 - Responsible user
 - COM_SELFSERVICE_CONNECTION
 - Load
 - Communication plan for Windows Upgrade
 - Communication plan for Hardware Upgrade
 - Communication plan for Windows Upgrade 0
 - Communication plan for Windows Upgrade 1
 - FR
 - EN
 - E-mail
 - Administrator
 - Responsible user
 - COM_ORDER
 - COM_RESCHEDULE_MIGRATIOND.
 - COM_RESCHEDULE_MIGRATIOND.
 - COM_SELFSERVICE_CONNECTION
 - COM_STEP1
 - COM_STEP2
 - COM_STEP3
 - COM_STEP4
 - COM_STEP5
 - Self-service

- Change e-mail content from Microsoft Word

Administration console

Schedule - Forecasting

Forecast planning



- Preview of scheduled migration for coming weeks

Schedule - Capacity planning

Refresh Insight PC
admin

Locations and Capacity planning management

Process
 Windows Upgrade

Location

Opening dates : from 10/1/2016 to 12/31/2016

Language: EN

Timezone: (UTC) Dublin, Edinburgh, Lisbon, London

- POC CUSTOMER
- AR
- Asia
- Austria
- Belgium
- BR
- Bulgaria
- CA
- China
- Czech Republic
- Default
- Denmark
- Egypt
- Estonia

Quotas

September		October 2016					November	
Mon	Tue	Wed	Thu	Fri	Sat	Sun		
26 0/∞	27 0/∞	28 0/∞	29 0/∞	30 0/∞	1 0/0	2 0/0		
3 0/∞	4 0/∞	5 0/∞	6 0/∞	7 0/∞	8 0/0	9 0/0		
10 0/∞	11 0/∞	12 0/∞	13 0/∞	14 0/∞	15 0/0	16 0/0		
17 0/∞	18 0/∞	19 0/∞	20 0/∞	21 0/∞	22 0/0	23 0/0		
24 0/∞	25 0/∞	26 0/∞	27 483/∞	28 0/∞	29 0/0	30 0/0		
31 0/∞	1 0/∞	2 0/∞	3 0/∞	4 0/∞	5 0/0	6 0/0		

Quota

Unspecified
 Unlimited number of operations
 Limited number of operations: 0
 Quota inherited by children locations

Save

Dates

One day of restriction
 Daily Limitation
 Sun Mon Tue Wed Thu Fri Sat
 begin on the 10/01/2016 until 01/31/2017

Periodic limitation
 begin on the [] each [] days until []

Monthly limitation
(From October 2016)
 1 of the month until January 2016
 1 Sunday of the month until January 2016

- Configure the capacity planning according to locations constraints

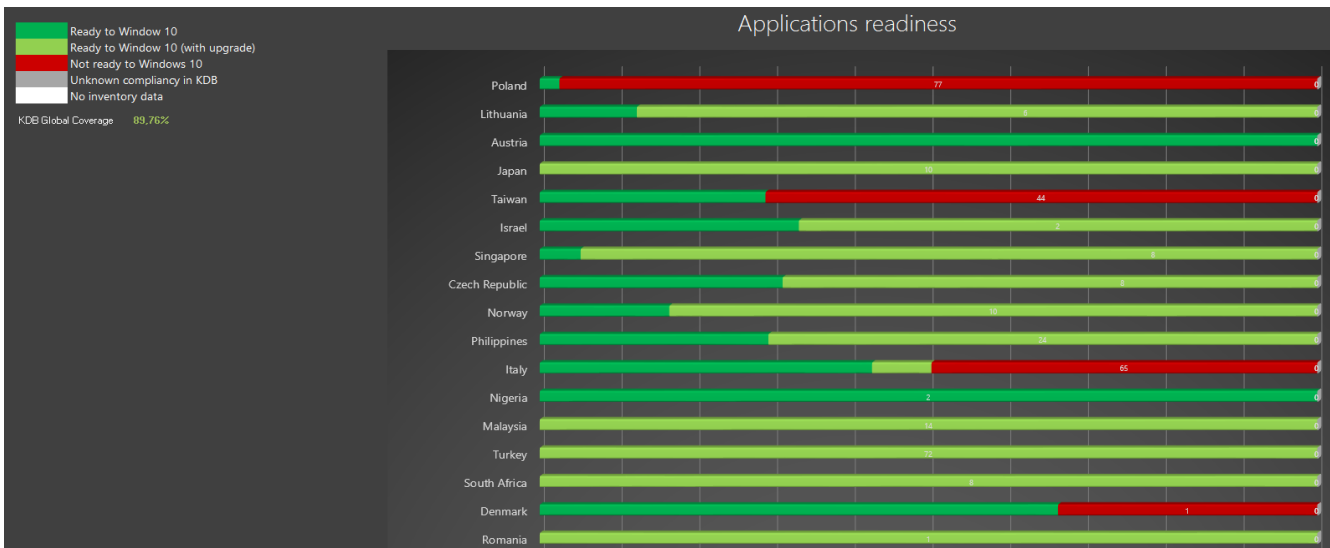
Reports

Eligibility report

Report summary

- Application and hardware eligibility details for each device
- Synthesis per location

Device	KDB Coverage	Operating system	Location	RAM (GB)	Model	Unknown compliancy	Not compliant
BRU00AA5	96.05%	Windows 7 Enterprise	DE/BERLIN01	8	Latitude E6540	QuickTime 7.1 WinMerge 2.14	WMI Tools 150
BRU00AA6	91.08%	Windows 7 Enterprise	DE/BERLIN01	8	Latitude E6540		
BRU00AA7	76.25%	Windows 7 Enterprise	DE/BERLIN01	8	Latitude E6540		
BRU00AA8	89.19%	Windows 7 Enterprise	DE/BERLIN01	8	HP ProBook 450 G2		
BRU0000E	90.00%	Windows 7 Enterprise	DE/BERLIN01	8	HP ProBook 450 G2		
BRU0020G	99.00%	Windows 7 Enterprise	DE/BERLIN01	8	HP ProBook 450 G2		
BRU0011I	82.35%	Windows 7 Enterprise	DE/BERLIN01	8	Latitude E6540		
BRU0010A	90.53%	Windows 7 Enterprise	DE/BERLIN01	8	Latitude E6540		
BRU0099Y	94.87%	Windows 7 Enterprise	DE/BERLIN01	8	Latitude E6540		
BRU008BT	97.25%	Windows 7 Enterprise	DE/BERLIN01	8	Latitude E6540		ABC Navigation 2.0
BRU00EE5	95.29%	Windows 7 Enterprise	DE/BERLIN01	8	HP ProBook 450 G2		ABC Navigation 2.0
BRU00YAV	94.20%	Windows 7 Enterprise	DE/BERLIN01	4	Latitude E6420		
BRU00DDA	94.74%	Windows 7 Enterprise	DE/BERLIN01	4	Latitude E6420		
BRU00DDB	96.15%	Windows 7 Enterprise	DE/BERLIN01	4	Latitude E6420		
BRU00AA1	90.91%	Windows 7 Enterprise	DE/BERLIN01	4	Latitude E6420		
BRU00AA2	93.02%	Windows 7 Enterprise	DE/BERLIN01	4	Latitude E6420		Scrubble Papers 14.2
BRU00AA3	73.97%	Windows 7 Enterprise	DE/BERLIN01	8	Latitude E5450	Maxima 5.25.1 QuickTime 7.1 WinMerge 2.14	



Reports

Device report

Report summary

- Hardware inventory

- List of relevant applications and compliancy to W10



Device inventory

10/26/2016 2:49 AM

RITSS21062L3755.ritslab.com

Operating System Microsoft Windows 7 Enterprise Service Pack 1
Model OptiPlex 9020
RAM 4,004MB
CPU Intel(R) Core(TM) i5-4570 CPU @ 3.20GHz (3201 MHz)
Disks C: (200GB) / D:
Logical processors 4
Network - Intel(R) Ethernet Connection I217-LM



Below is the list of products detected on RITSS21062L3755 with the compliancy to the latest Windows version.

Products installed		Windows 10
Microsoft Lync 2010	Microsoft Lync 2013	
Java Runtime Environment 8.0	Java Runtime Environment 8.0 Update 51	
Microsoft Silverlight 5.1	Microsoft Silverlight 5.1	
Oracle Client 10.2	Oracle Client 12.0	
SoundMAX 6.10		
VLC Media Player 1.0	VLC Media Player 2.2	
Adobe Reader	Adobe Reader DC	
Microsoft DCF 2013	Microsoft DCF 2013	
Microsoft Office 2013	Microsoft Office 2013	
Microsoft Office SharePoint Designer 2013	Microsoft Office SharePoint Designer 2013	
PDFCreator 1.2	PDFCreator 2.3	
Mozilla Firefox 27.0	Mozilla Firefox 47.0	
WinZip	WinZip 20.5	

Compliant
 Upgrade
 Not compliant
 Unknown
 Package not ready
 Package ready

Reports

Packaging report

Report summary

- Packaging priority

Packaging priority

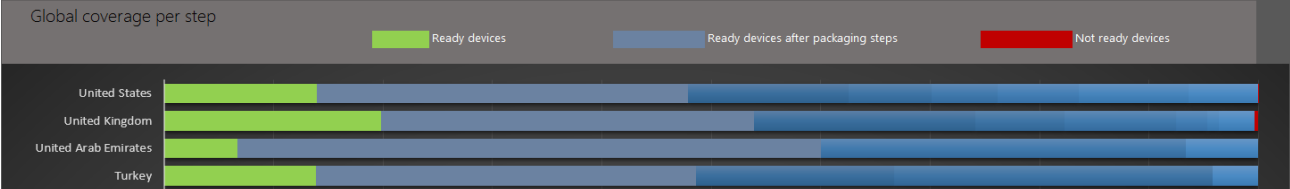


The ready date is based on availability date of the last package for that step. If no package has delivery date, the date is empty.

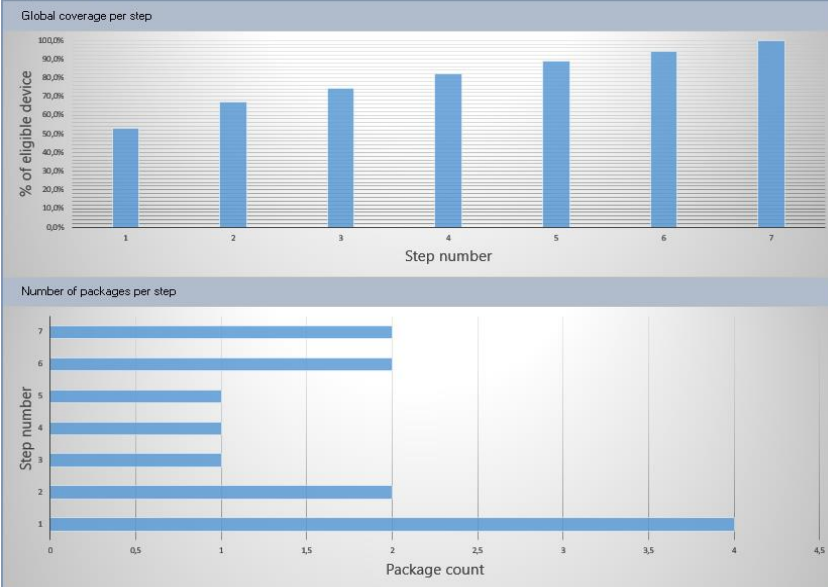
% of devices with 100% of packages needed to use the device in the target OS

Package	Step	Ready date	% of eligible devices
Ready devices	0		18,6%
Microsoft Office 2016	1		53,0%
Microsoft Silverlight 5.1	1		53,0%
Adobe Reader DC	1		53,0%
Google Chrome 51.0	1		53,0%
Java Runtime Environment 7.0 Update 85	2		67,1%
Java Runtime Environment 8.0 Update 51	2		67,1%
Adobe Shockwave Player 12.2	3		74,5%
WinZip 20.5	4		82,0%
Mozilla Firefox 43.0	5		88,9%
Pdf995 16.0	6		94,2%
PowerDVD 16.0	6		94,2%
VLC Media Player 2.2	7		99,9%
PdfEdit995	7		99,9%

Step details



Step details



Reports

Remediation report

Report summary

- List of remediations for relevant product/version



Windows 10 remediations

Only products installed on devices in Assess or Decide step appear in this report.

1355 Relevant Products/Versions (434 distinct products)								
Product	Version	Licensed	Target Product	Target Version	Number of devices	Packaged	Packaging State	
.NET Memory Profiler	4.6	✓	.NET Memory Profiler	5.0	1			
1Password	4.6	✗	1Password	4.6	2			
1Password	1.0	✗	1Password	4.6	4			
1Password	4.6	✗	1Password	4.6	5			
2X Client		✓			1			
2X Client	10.1	✓			1			
2X Client	10.5	✓			28			
2X Client	11.0	✓			9			
2X Client	11.1	✓			28			
3Connect	3.0	✓			3			
4K Video Downloader	3.5	✗	4K Video Downloader	3.8	1			
7-Zip	15.05	✗	7-Zip	16.02	23			
7-Zip	15.06	✗	7-Zip	16.02	5			
7-Zip	4.43	✗	7-Zip	4.43	1			
7-Zip	4.44	✗	7-Zip	4.44	1			
7-Zip	4.65	✗	7-Zip	4.65	100			
7-Zip	9.17	✗	7-Zip	9.17	1			
7-Zip	9.19	✗	7-Zip	9.19	1			
7-Zip	9.20	✗	7-Zip	9.20	964			
7-Zip	9.21	✗	7-Zip	9.21	4			
7-Zip	9.22	✗	7-Zip	9.22	79			
7-Zip	9.35	✗	7-Zip	9.35	4			
7-Zip	9.3	✗	7-Zip	16.02	25			
7-Zip	9.38	✗	7-Zip	16.02	21			
7-Zip	9.2	✗	7-Zip	16.02	1			
A1 Sitemap Generator	6.0	✓	A1 Sitemap Generator	6.0	1			
ABBYY FineReader		✓	ABBYY FineReader	12.0	5			



Windows 10 remediations

Products	Total number of devices
.NET Memory Profiler	1
[mp3 - explorer]	43
1Password	11
2X Client	67
3Connect	3
4K Video Downloader	1
7-Zip	1230
A1 Sitemap Generator	1
ABBYY FineReader	12
Ableton Live	3
AbleWord	1
ACDSee	1
ACDSee Photo Manager	21
ACDSee Pro	6
Ace Video Converter	1
Acronis Backup Agent	4
Acronis True Image	1

Assess > KDB > Products Owners

Knowledge database (2017-04-25) Unknown signatures Packages Products Owners

6 Products Owners

	Name	Email address	Number of products	Packages	Last communication date
<input type="checkbox"/>	Charlotte Makapo	Charlotte.Makapo@lab.com	0	<input type="checkbox"/>	
<input type="checkbox"/>	John Smith	John.Smith@lab.com	0	<input type="checkbox"/>	
<input type="checkbox"/>	Julie Thomas	Julie.Thomas@lab.com	0	<input type="checkbox"/>	
<input type="checkbox"/>	Karim Lizi	Karim.Lizi@lab.com	0	<input type="checkbox"/>	
<input checked="" type="checkbox"/>	Paul Yual	Paul.Yual@lab.com	1	<input checked="" type="checkbox"/>	
<input type="checkbox"/>	Riyan Scott	Riyan.Scott@lab.com	0	<input type="checkbox"/>	

Mode:

1 Product Number of versions Number of owners

Product	Number of versions	Number of owners
CutePDF Writer	5	1

Products Owners web portal

EN ▾

Products Owners

Paul Yual
 Select a target Windows version then select a product on which to define compliances and remediations

Target:

CutePDF Writer (5)

Validation state	Version	Compliancy	Target
<input type="checkbox"/>	2.6	<input type="checkbox"/> <input checked="" type="checkbox"/> <input type="checkbox"/>	CutePDF Writer 3.1
<input checked="" type="checkbox"/>	2.7	<input type="checkbox"/> <input checked="" type="checkbox"/> <input type="checkbox"/>	CutePDF Writer 3.1
<input checked="" type="checkbox"/>	2.8	<input type="checkbox"/> <input checked="" type="checkbox"/> <input type="checkbox"/>	CutePDF Writer 3.1
<input type="checkbox"/>	2.9	<input type="checkbox"/> <input checked="" type="checkbox"/> <input type="checkbox"/>	CutePDF Writer 3.1
<input checked="" type="checkbox"/>	3.0	<input type="checkbox"/> <input checked="" type="checkbox"/> <input type="checkbox"/>	CutePDF Writer 3.0