

BaselineZ, 3D Immersive Reservoir Model Visualization and Collaboration environment

"Meet, work and make decisions together in 3D from anywhere in the world"

Craytive Technologies - Projects

- Craytive Technologies founded in 2017
- Worked together with Baker Hughes and Shell and various software projects (custom software development)
- Started with BaselineZ in 2018
 - 3D Visualization and Global Collaboration
 - Cloud-based, mobile first strategy
 - Mixed, Virtual and Augmented Reality support, multiple devices
 - Petrel and JewelSuite Connectivity



2

BaselineZ Platform overview

BaselineZ Main Workflow



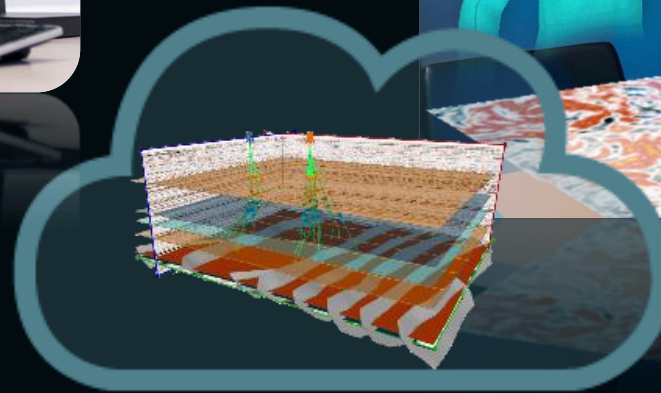
1

Connect your
3D Geoscience Models

- *Petrel (Schlumberger)*
- *JewelSuite (Baker Hughes)*
- *Your own applications*

2

Cloud-based collaboration from
anywhere around the world



3

Host 3D meetings and make
better informed decisions together



BaselineZ HoloLens Support



Mixed, Virtual and Augmented Reality

Microsoft HoloLens
Mixed Reality



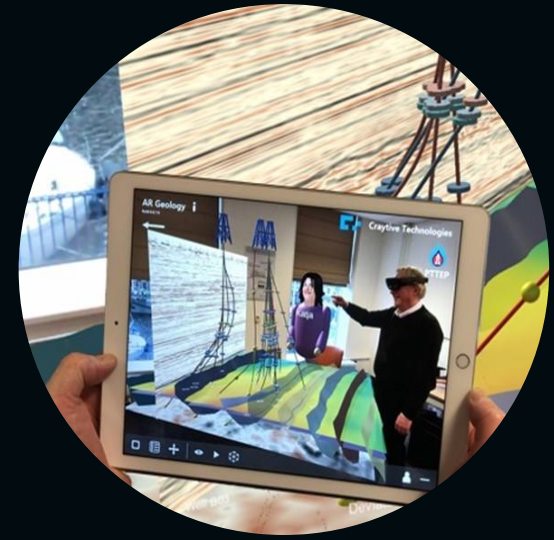
- Display Holograms
- See-through device
- Mix of physical and Virtual world
- Hands-free
- Full immersive

Oculus Quest
Virtual Reality



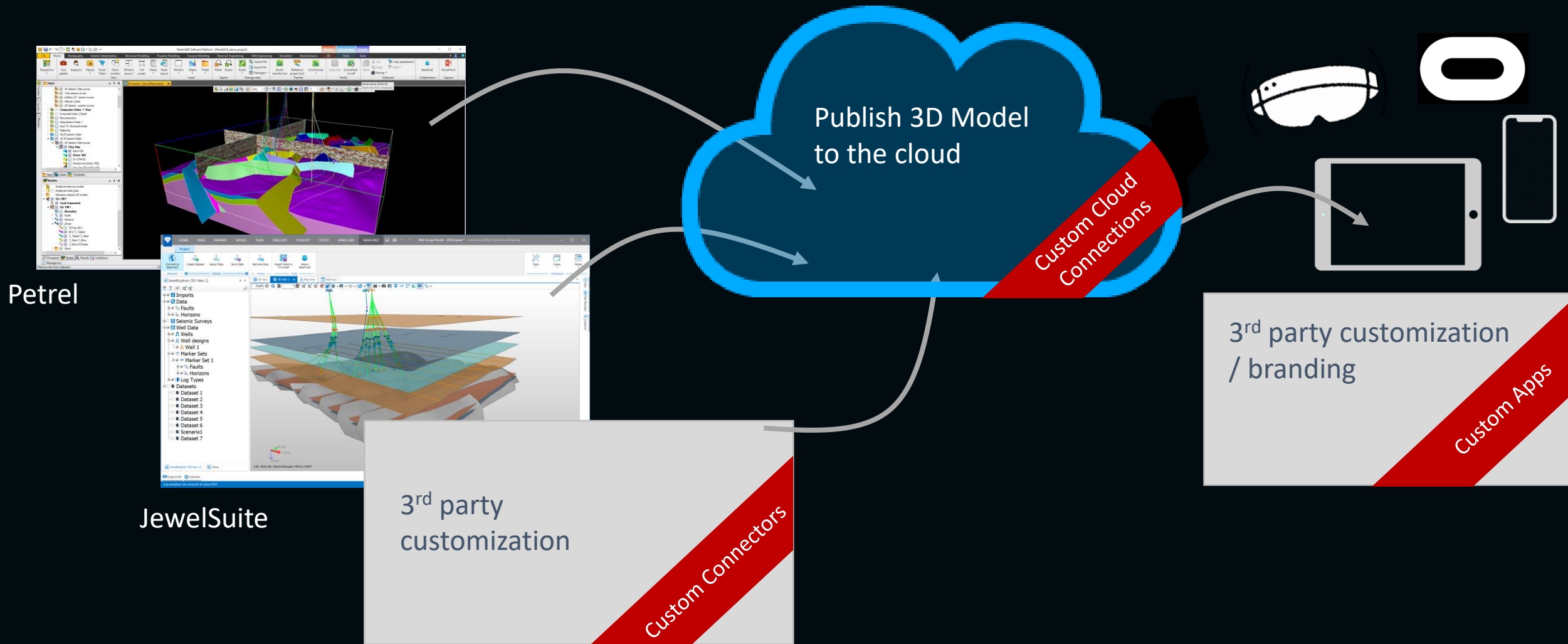
- Display 3D Objects
- Close device
- Only virtual world
- Hands-free & controllers
- Full immersive

iOS and Android tablets and phones
Augmented Reality



- Display 3D Holograms
- See-through device
- Mixed Physical and Virtual world
- Need to hold device
- Less immersive

BaselineZ Customizations / Branding





4

Business opportunities and value



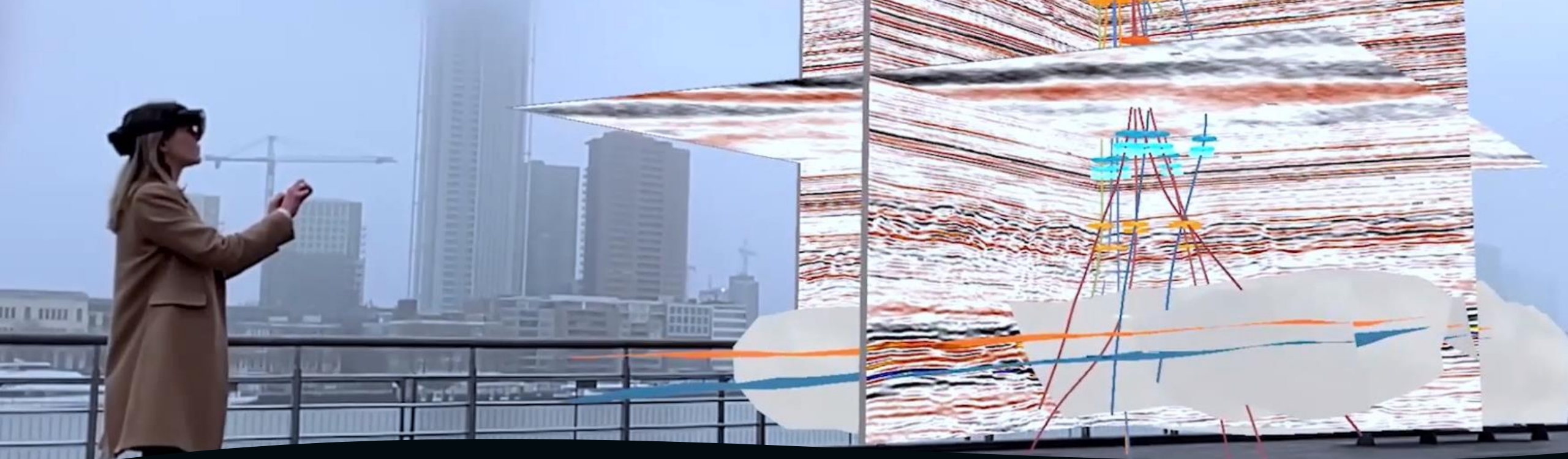
Collaboration Challenges

- **Global team** of experts involved
- **Data Connectivity** between many applications
- Integrated Collaboration & **3D Visualization** tools missing
- 2D Remote Meeting provide **limited insights**
- **Traveling** is hardly possible, no face-to-face meetings



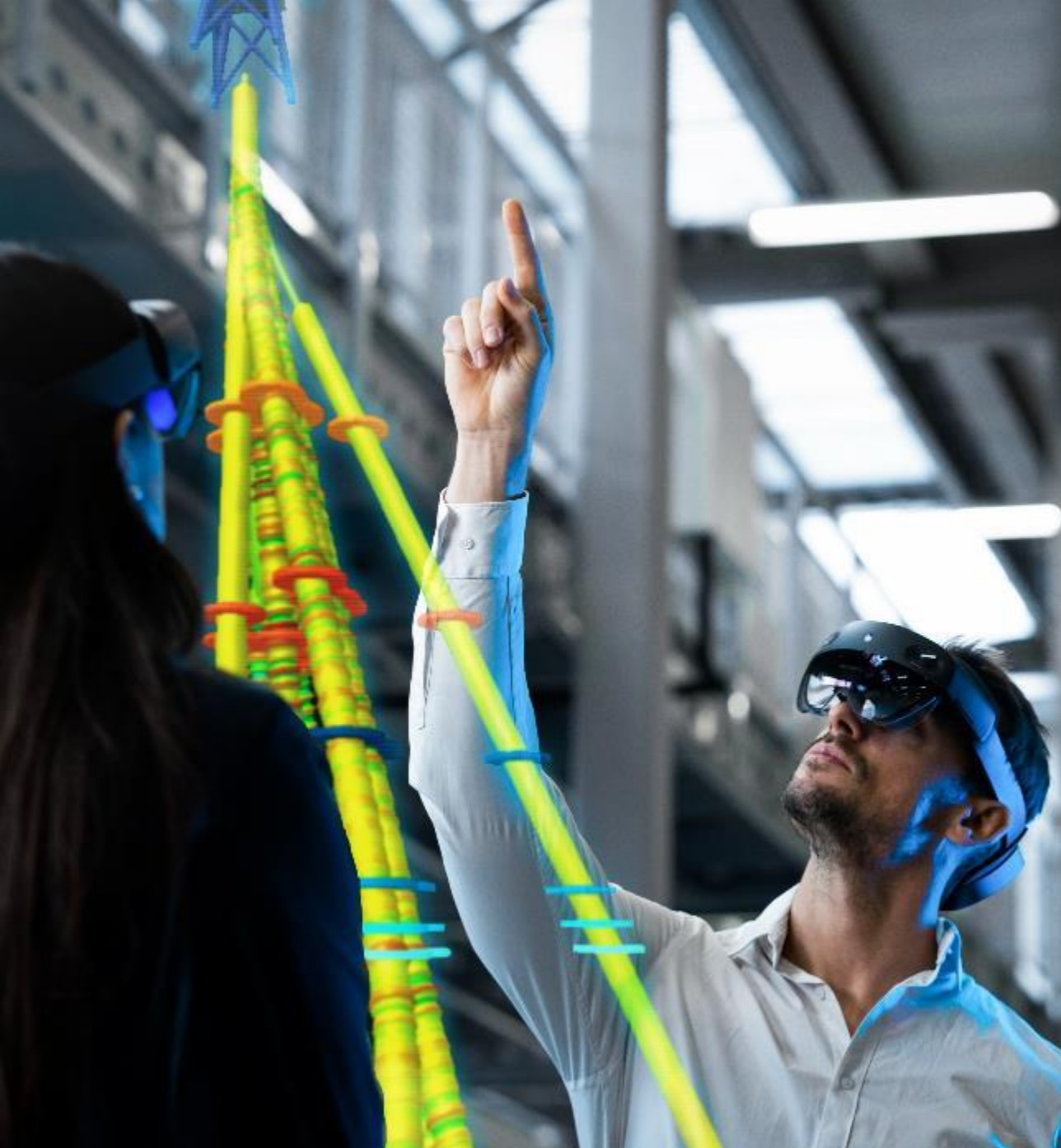
Business Opportunities

- Field Development Studies and Reviews Sessions
- Real-Time Drilling and Geo-Mechanics Operations
- Data Visualization Rooms & Delivery
- Knowledge and Information sharing
- Training and education
- Sales and Marketing: present using state-off-the-art technology



Business Value

- Reduce **costs** and save **time**
- Multi-Scale 3D Reservoir Data **Insights** anywhere & anytime
- Data **availability** to Geologists, Petrophysicists, Completion Engineers, etc.
- Better informed **decision making**
- Stay **connected** with team members, partners and customers
- Recruiting and onboarding of **young professionals**



For more information, please contact us:

info@craytive.com

www.baselinez.com