

# HCL Augmented Network Automation (ANA) Platform

**Automate and Optimize your 5G/4G Access Network**

November, 2021



# Industry Software: NextGen Products Group within HCL Technologies

## Industry Software Division of HCL Technologies

### HCL Overview

50 Countries

159,000+ Employees

\$10+ BN Revenue



- IT & Business Services**
- Digital Operation
  - Digital Business
  - Digital Foundation
- Engg and R&D Services**
- Product Engineering
  - Platform Engineering
  - Operations Technology

- Software Portfolio across**
- DRYiCE
    - Service Orchestration
  - HCL Software
    - BigFix
    - AppScan
    - OneTest
    - Unica
    - Commerce
  - ISD

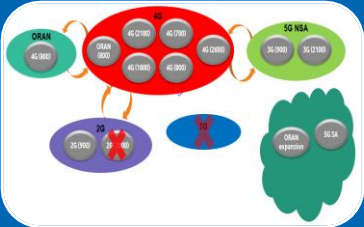


  
Telco & 5G

  
Enterprise AI

  
Mfg/Industry 4.0

# Network/Business Challenges faced by the CSPs around the Globe



Network complexity



Power saving



Smart investment



Backhaul integrity



Mobility optimization



Load management

Key to success: | Customer-Centric Optimization & Increasing Automation using HCL ANA platform



# HCL ANA

## Augmented Network Automation

### Automation & orchestration

Full automated cycle

Analyze → Execute → Feedback



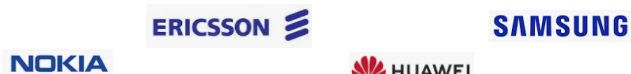
### Multi-cloud support

On-prem, cloud (multi-cloud support), hybrid

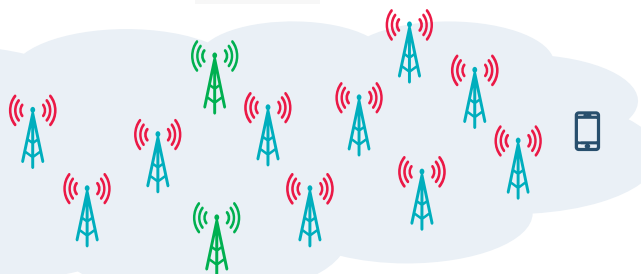


### Multi RAN-vendor support

Multi-vendor, multi technology  
Traditional/NG networks, vRAN/ORAN nRT RIC



3G/4G/5G RAN



### User-centric data

e.g., Crowdsourcing, CTR, Ookla

### HCL / 3<sup>rd</sup> party applications

Rich API/SDK for developing ext. apps

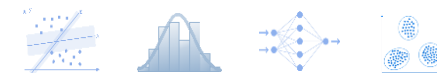
API for full RAN control, ML-based insights for smarted decision



### Advanced analytics using ML

Visualization, BI and AI/ML applications

Anomaly detection, AI/ML apps e.g., QoE optimization, energy saving, etc.



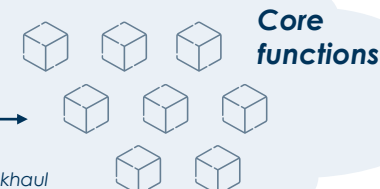
### Multi domain support

Transport, ORAN xHaul, 4g/5g core

Transport / xHaul



Backhaul



# HCL Augmented Network Automation (ANA) – Capabilities



## 4G & 5G Automation

- Ready to deploy = Time to Market
- Automated for fast and efficient rollout
- Close loop 5G optimization
- No need to wait on OEM capabilities



## Agile & Programable

- SONFlex – Openness APIs
- Rapid Development (across all OEMs & technologies)
- Deployable on all major cloud provider



## O-RAN (Open) Support

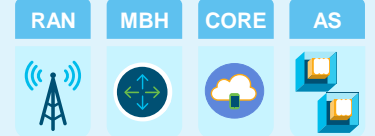
- Cluster SON for open, disaggregated and virtualized RAN
- Real-time, subscriber-centric optimization
- Visibility and actions at subscriber level

## Comprehensive Predictive Analytics



## Data Enrichment

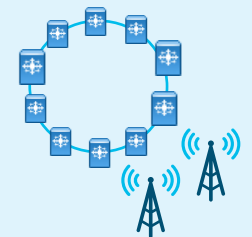
- Integrating 3rd party data source
- Using ML to predict and respond with corrective action



## Multi Domain Service Optimization (MDSO)

- E2E Slice SLA Management

## Transport Aware SON



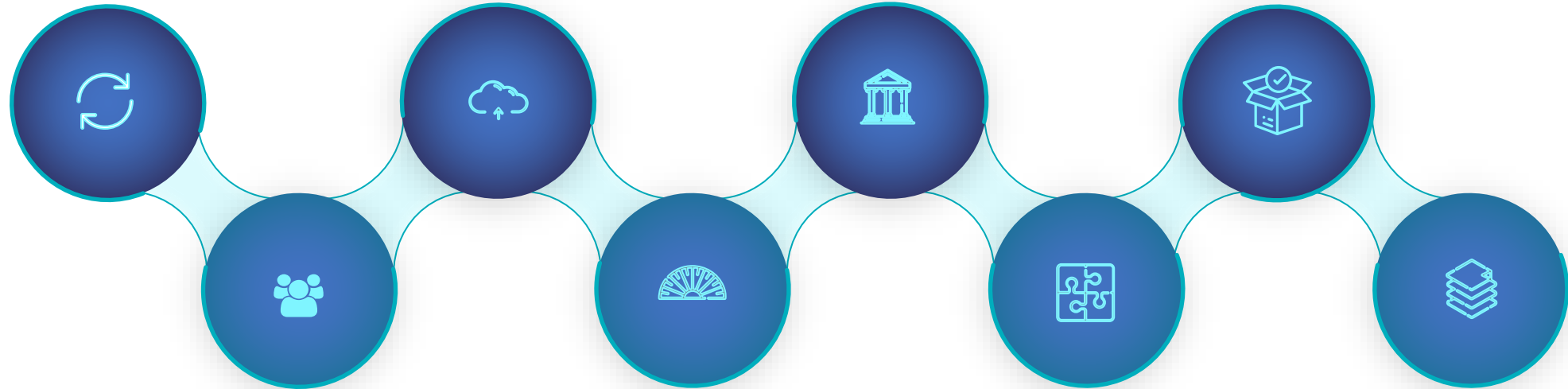
# HCL Augmented Network Automation (ANA) Platform – Key Differentiators

*Closed Loop 24/7 automation with minimal human intervention*

*Open & Flexible API (SONFlex) deployable on-prem or private/public cloud*

*Unified Mgmt. & Orchestration of the ANA Apps. incl. Conflict resolution*

*Comprehensive Services Portfolio*



*User friendly SON GUI and Analytics platform*

*Multi-Vendor incl. Ericsson, Huawei Samsung & Nokia. Multi-technology (2G/3G/4G/5G)*

*Partnership with best-of-breed solutions vendors for delivering a complete E2E Solution*

*Multi-layered architecture, allows adding plug-ins for collecting/processing new data sources*

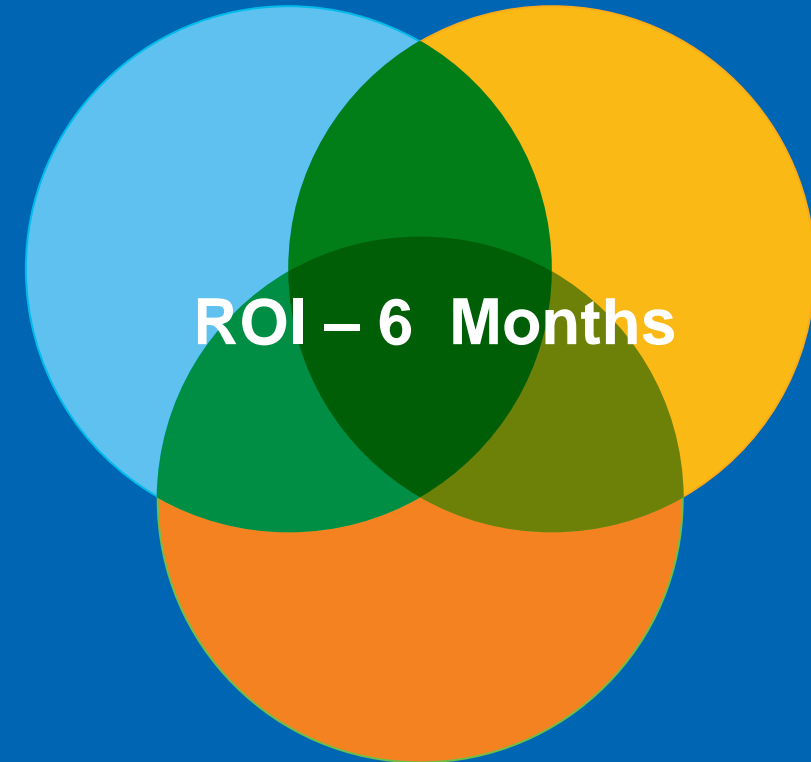
# HCL Augmented Network Automation (ANA) - Business Value

## Return on Investment(ROI)

- OPEX Saving by ~40% with Automation
- CAPEX Deferral ,reduction by ~20% of loaded sites
- Improved Customer Satisfaction

**Productivity Savings**  
Reduced OPEX With Automation

**CAPEX Deferral**  
With Network Efficiency



**Increased Revenue**  
Improved Network Quality of Experience

# Commercially Available ANA Applications

5G

LTE Products

UMTS Products

GSM Products

Hetnet Products

Infrastructure and New Solutions

- DPAE
- DSS

- CICO-L
- DPAE-L/PAE-L
- DPO-L
- DSH-L
- RACO-L
- ANE-L
- X2LO-L

- ANR-INTRA-U
- ANR-INTER-U
- DLB-U
- AUGR-U
- MPM-U

- ANR-G

- HANR-U

- SONFlex
- RAN Sharing support

- DPO
- RACO

- MEH-L
- eCICO-L
- ICLB-L
- DLB-L
- ISHO-L
- ALUR-L

- APO-U
- ICLB-U
- DSH-U
- ISHO-U
- PAE-U

- AGLR

- HDLB-U

- FRM
- AL5R

- ALGR-L
- PBLM-L
- MRO-L
- IRLB-L
- IFHO
- MCM

- MEH-U
- CCO-U
- DIM-U
- AULR-U
- SCO-U
- PBLM-U

- AGUR

- HSCO-U



# SONFlex APIs for Custom Application Development

## Evolved Platform with Open APIs

Develop in all major programming languages

Mediating interaction with multi-vendor and multi-technology

## New app hoster

Deploy and manage SONFlex apps across lifecycle on separate resources

## SONFlex Studio enhanced

Enhanced GUI with assistance – verification & validation for light application designing

Integrated with ANA core services platform –ML/AI Engine and more

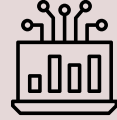
## Orchestrated

Arbitration core service to orchestrate current and future applications developed by HCL ,CSP or any 3<sup>rd</sup> party



# SONFlex – Make it Simple

**Rich Portfolio by leveraging the SONFLEX Marketplace**



**Virtual Hosting Environment**

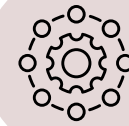


**Orchestrated by SONFlex Conflict Management**

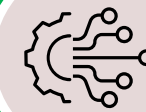


**Making It Simple**

**Address complexities of underlying networks & EMSs**



**Intent-driven optimization**




**Automation by non-programmers with SONFlex Studio**



# 1 Billion Subscribers and 3 Million Cells

## Vendors:

E - 


N - **NOKIA**

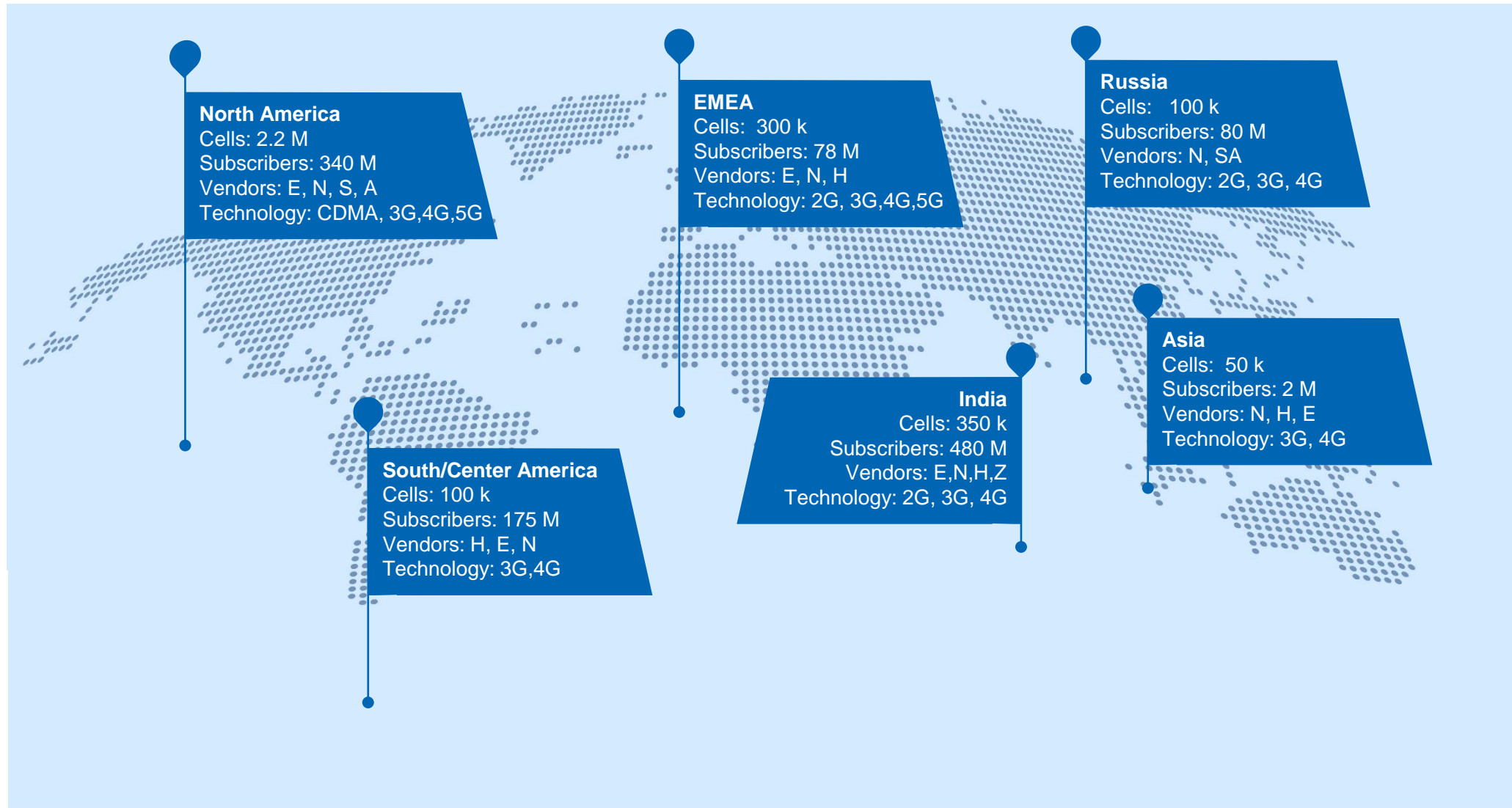
S - **SAMSUNG**

A - 

H - 

 1B subscribers

 3M Cells



# ***HCL***

[www.hcltech.com](http://www.hcltech.com)

\$10.02 BILLION | 159,000+ IDEAPRENEURS | 50 COUNTRIES