

# Atos Managed Cloud Azure



**Atos**



Inflation, rising energy prices and shifting exchange rates

Geopolitical, supply chain disruptions, and security breaches erode trust

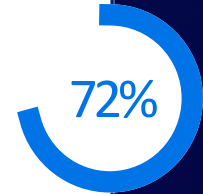


Talent shortages and increased labor costs

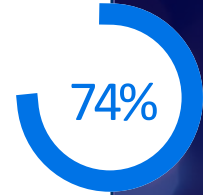
# We all continue to face uncertain times

1. The transformation imperative: Digital drivers in Covid-19 pandemic, *The Economist Intelligence Unit, sponsored by Microsoft, 2021*  
2. Global migration and modernization perception study commissioned by Microsoft  
3. Top strategic technology trends for 2022: 12 trends shaping the future of digital business, *Gartner, 2022*  
4. Business in the crosshairs: analyzing attack scenarios by Positive Technologies, Dec 2021

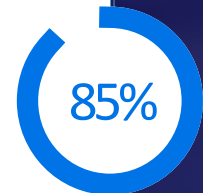
## Technology is the foundation to transform and grow



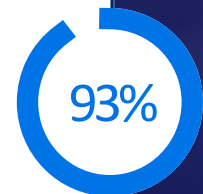
of industry's pace of transformation has accelerated as a result of the pandemic<sup>1</sup> creating IT platform complexities that can hamper agility.



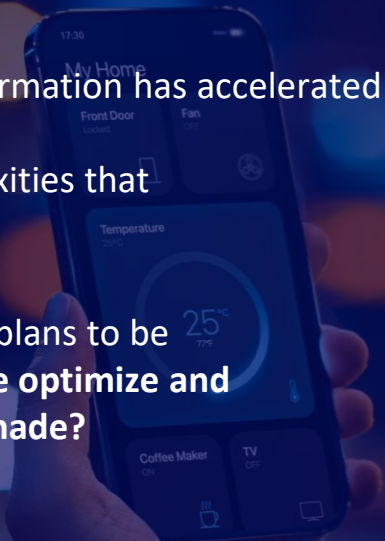
of migrated workloads have plans to be modernized<sup>2</sup> but how can we optimize and maximize the investments made?



of organizations will embrace a cloud-first approach by 2025<sup>3</sup> but how do we ensure it is done efficiently, productively to stay on top?



of company networks can be penetrated by cybercriminals yet how do we improve protection cost-effectively?



# CIO Priorities & Needs



**Value** extraction from hybrid cloud



**Sustainability** targets reflecting increased regulations



Secure use of **data & AI** in the public cloud



**Cost transparency** & containment challenges



**New complexity** as a result of increased multi-cloud adoption



Complexity and **Speed of modernization** (Long live the Mainframe)



**Governance and compliance** challenges in a multi-cloud world



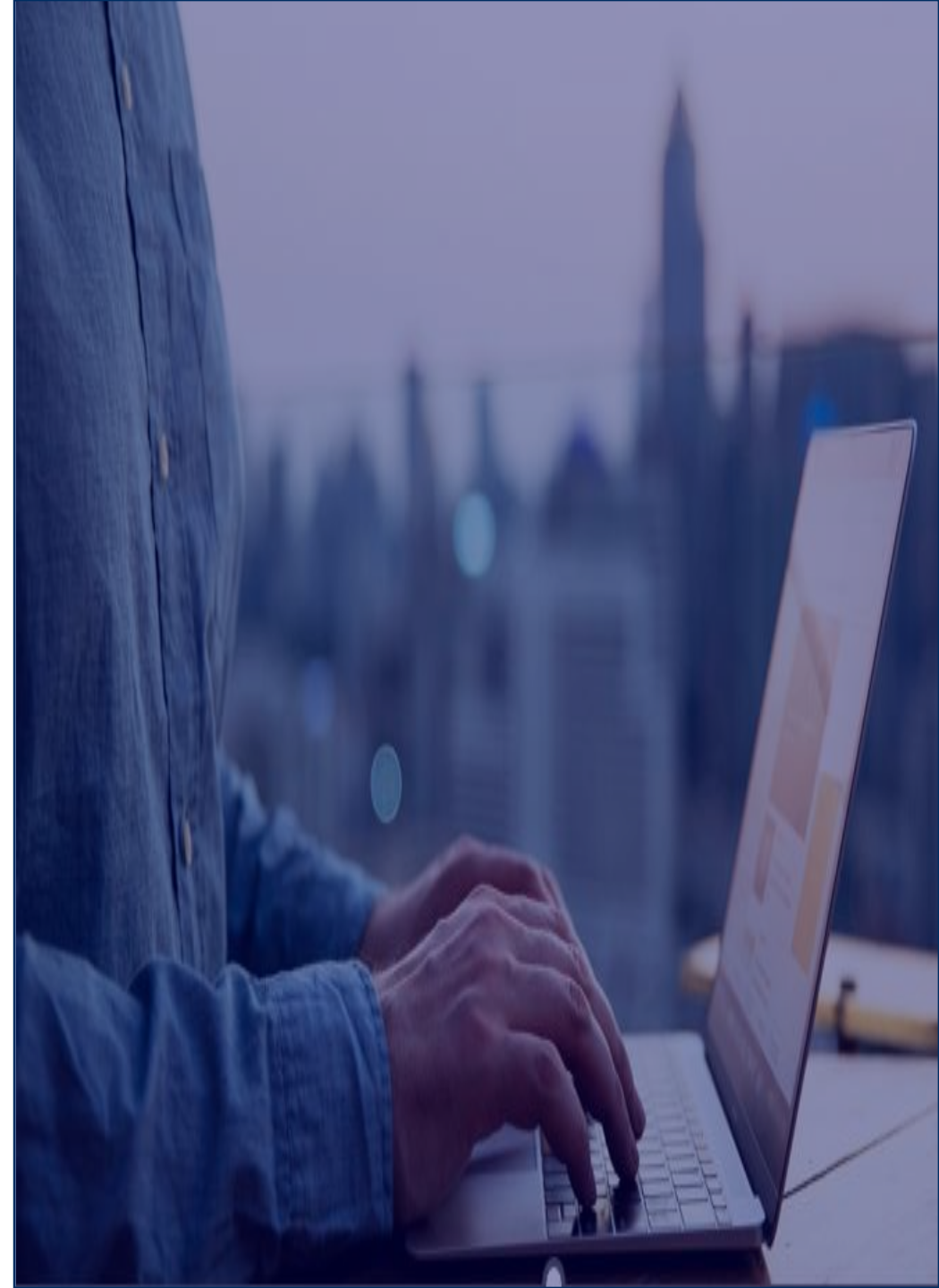
Increased Cloud **nationalism & sovereignty**

———— Evolving Priorities across the cloud continuum ————



## Atos's Focus is on supporting CIOs to:

- **Extract more value from hybrid cloud** (Data and AI) in a secure manner.
- Manage **the complexity** of increasing **multi-cloud** adoption.
- **Navigate** through **security**, **financial** management, **sovereignty**, and **observability** challenges.



# Cloud adoption challenges

Organizations want to get to cloud quickly and efficiently



## Skillset

Cloud talent is hard to come by and quickly disappears



## Lengthy timelines

In-house migration solutions can take months or even years



## Legacy processes

Legacy tools and approaches are labor and resource intensive



## Inability to grow

As organizations migrate workloads, they want a scaled operations model that enables growth



## Vendor lock-in

Heavy weight contracts and SLAs perceive vendor lock-in issues



## No Compelling Event

Migration to the cloud is not an end in itself and rarely a differentiating business factor

← Atos experience shows →

Too much freedom has resulted in lack of governance and chaos...

Too much control impedes productivity and business innovation...

Atos & Microsoft join forces to **minimize** these challenges and **accelerate** your cloud adoption strategy

# The foundation of our solution strategy



## Customer intimacy

**30yrs+ of Industry leading in Managed Services**  
Hybrid Cloud Infrastructure and Transformation

We are engaged in CEO summits and Client Advisory Groups to **understand** our customer **pain points** and **focus** on **what matters most** for them



## Fit for purpose

**Modernising on-premise and new managed services** across the cloud continuum

**New adjacent digital capabilities** in Cybersecurity, Major Events, Connected Solutions and Digital ID and pioneering decarbonization commitment



## Sustainable partner ecosystem

Cloud **centric solution accelerators** focused on specific cloud **pain points**

Harnessing the combined expertise, R&D and investments of **select technology partners** to **accelerate time** to Cloud, Data and AI **value**

# Adopting Hybrid Cloud helps you solve these business challenges

**Legacy and aging Infrastructure**

Hybrid cloud helps modernize legacy systems without a full-scale overhaul.

**Budget and resource Constraints**

Hybrid cloud optimizes costs and resource allocation.

**Enabling new ways of working**

Hybrid cloud supports and enables modern remote work practices.

**Modernizing operations**

Hybrid cloud introduces the latest cloud technologies, to meet your needs wherever you are in your cloud journey. Key tools like Azure Arc and Defender help to extend advanced cloud benefits to your on-site infrastructure.

**Bridge the gap between lines of business and Infrastructure**

Unlocking the ability to allow lines of business to embrace the latest and greatest while keeping a managed infrastructure.

**Climate change**

Hybrid cloud solutions support sustainability efforts by facilitating efficient resource allocation, reducing physical infrastructure, and optimizing energy consumption. This is achieved through a blend of on-premises and cloud-based solutions, leveraging energy-efficient hardware, data centers, and cloud-enabled services. Ultimately, it minimizes environmental footprint while maximizing resource utilization.

**Incorporate GenAI into infrastructure Foundations**

A hybrid cloud approach allows organizations to harness the full potential of data and GenAI, driving business growth and competitive advantage.

**Cybersecurity**

Hybrid cloud allows you to take advantage of cloud-born security solutions in your traditional infrastructure, complete with extended support available through Azure Security Center.

**Enhance market agility**

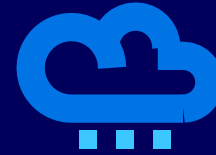
Hybrid cloud speeds up product delivery and innovation for a faster time to market, through rapid scaling of web applications and infrastructure that is quick, and cost-effective.

**Consume resources on demand**

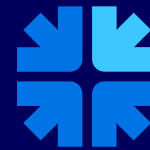
Hybrid cloud's flexible licensing translates into an OPEX cost model that can smooth cash flow.



# Enterprise benefits



**Achieve efficiency**, through the ability to leverage cloud without the need for wide scale transformation.



**Maximize value**, by focusing on maximizing the value of operations while simplifying processes to ready data for seamless integration with AI. This includes minimizing complexities to make data AI-ready and enhance its potential value.



**Emerge stronger** through advisory services, transformation, and management designed to prepare data ready automation and AI.

# The what and how?

Building solutions to deliver value for our customers

## What

---

### Consistency of Experience

#### Consistency of services

Write once, deploy many across multiple targets

#### Consistency of user experience

Supporting Different personas and consumption models

### Consistency of Operations

#### Automation and orchestration

#### Governance regardless of consumption model

#### Expense management and control

X-Cloud

## How

---

Selection of **consistent technology** stacks across private, public and sovereign clouds

**Choice of consumption** either through a curated service catalogue, native cloud consoles, APIs, or CICD pipelines

**No vendor lock-in** combining native cloud APIs, industry standard configuration Management tools, and CICD pipelines

**Cloud agnostic** policy-based engine, ensuring compliance by preventive & retrospective controls, and enterprise grade service management

**Predictability, visibility and cost optimization** powered by FinOps



# The Atos value in Hybrid Multi-Cloud

How we support our Customers

- **Hybrid multi-cloud ecosystem of partners focused on de-risking modernisation**
- **Advisory and migration expertise**
- **Infra, data and App modernisation**
- **Cloud expertise (private, public and sovereign)**
- **Customer intimacy (business, Infra and App)**
- **Global footprint with local proximity (including Data centres)**
- **Hybrid Multi-cloud Orchestration Platform**  
| Governance & compliance | FinOps governance | Autonomous Ops | Business process Observability | Infra Observability | App Observability | Security Observability | Resource Management | Cloud agnostic policy mgmt



## Global leader

with European roots and deep expertise in data centers, outsourcing and hybrid cloud



## World-class partnerships

Partnership ecosystem with industry top players



## Decarbonization

Low carbon footprint IT infrastructure services



## Multi-services control center

Multi-cloud and core infrastructure management and automation platform

# Atos Managed Cloud Azure



# Atos Managed Cloud Azure Foundations

Accelerating Cloud Transformation through solution accelerators



Governance and Observability



API First, Infrastructure as Code approach



Lifecycle Management



Sustainability



IT Service Management Service (ITSM)



Security and Compliance



Modular Designed to Scale



Reliability

*Benefit from our experience, expertise and partner ecosystem to innovate and scale up*

1. Streamlined Cloud Migration.



2. Mature Cloud Operations.



3. Addressing barriers to adopt.



4. A defined cloud destination.



Our experts build resilient, manageable and observable platforms

Customer Centric Approach, industry based

Maximum flexibility to harness any cloud for an all-encompassing cloud strategy

# Managed Cloud Azure

Your **Azure foundation** managed, end-to-end



## 24x7 Monitoring

Continuous monitoring of metrics and logs for anomaly detection for IaaS and PaaS deployed Services.



## Alerting

Anomalous metrics or logs generate automated alerts to our Cloud-Ops for service resolution of incidents.



## Service Management

Service reliability delivered at a high, scalable and performant standards, using IT Service Management (ITSM) tools (automatic ticket creation, logging and efficient response)



## Cloud Security Foundations

Build on Cloud Security Foundation standards the landing zone provides security by design.



## Continuous Improvement (CI)

CI catalogue development and management aligned to Well-Architect frameworks



## FinOps

Provision of established governance and budget tracking, aided by monitoring and automation.



## Authentication Services

Identity and access management (IAM), Single Sign-On (SSO), Security assertion, and 3<sup>rd</sup> party authorization services.



## CSP Instance Management

Management of Virtual instances, including all Major OS versions via CSPs



## Automation

Implementing automation to reduce human error and enhance efficiency by automating repetitive tasks.



## Capacity Planning

Facilitating peak load and optimal performance by effectively managing resource capacity.

# Portfolio Offering

Modular approach to meet enterprise varying needs






**Cloud Security Services**

- Security Architecture
- Identity & Access Management
- Security & Compliance Management
- Workload Protection

## Atos Managed Cloud Azure

Managed Azure	Managed Hybrid	Managed Sovereign	Managed Multi Cloud
Simplifying the complexities of public cloud - Azure	Unlocking the true potential of hybrid cloud services	Addressing Sovereign needs (Microsoft Cloud for Sovereignty)	Consistent experience Azure, Hybrid, AWS, GCP
Managed Azure VM	<b>Managed Azure ARC</b>	MCFS ASSESS	Managed Multi-Cloud Private Cloud Azure AWS GCP
Managed Azure Backup	ARC enabled ESU	Managed VM (MCFS)	
Managed PaaS	ARC enabled VM	Managed PaaS (MCFS)	
Managed DR	ARC enabled SQL	Managed ACS/AKS (MCFS)	
Managed AVS	ARC enabled AKS	Managed DR	
Managed ACS/AKS	ARC enabled VMware		
	<b>Managed DR</b>		
	<b>Managed Azure Stack HCI</b>		

-  **Cloud Decarbonization Services**
-  **Cloud Advisory**
-  **Cloud Migration**
-  **Cloud FinOps**

## Managed Landing Zone

Cloud Deploy & Cloud Ops Components

Customer Onboarding

Billing & Account Mgmt

Service Management

Automation

Governance

Reporting

L1-L4 CloudOps

Cloud Services Life-cycle management

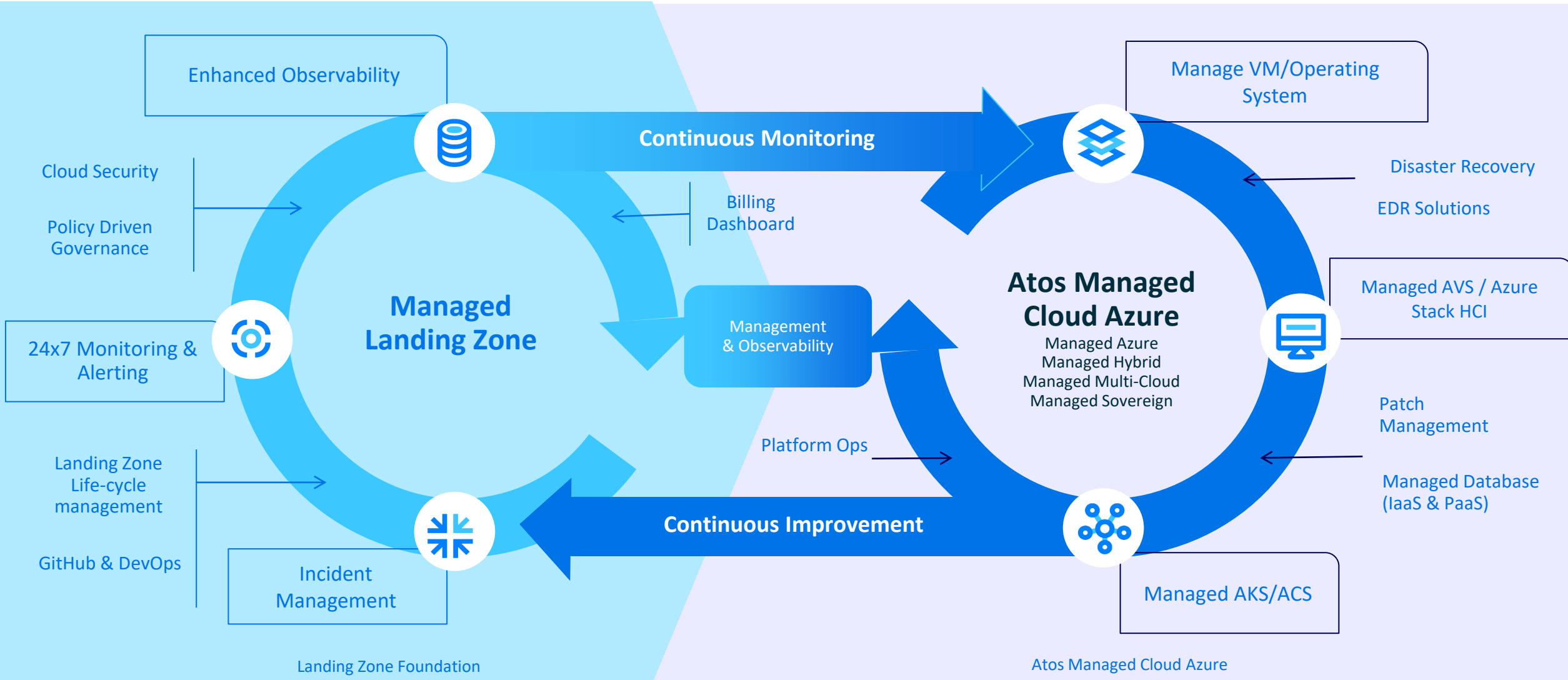
WAF & CAF\*

Monitoring & Observability

Atos

WAF – Well Architected Framework  
CAF – Cloud Adoption Framework

# Atos Managed Cloud Azure

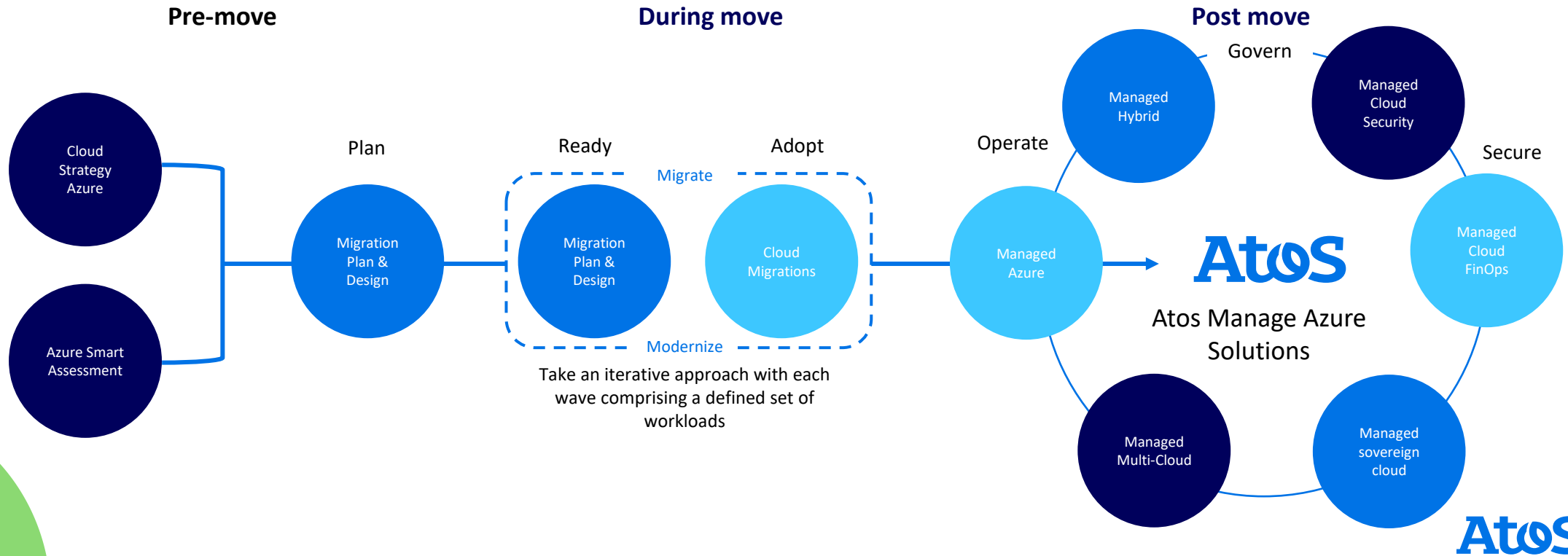


# Customer Journey Overview

A journey leveraging both Microsoft Azure services and Atos Capabilities

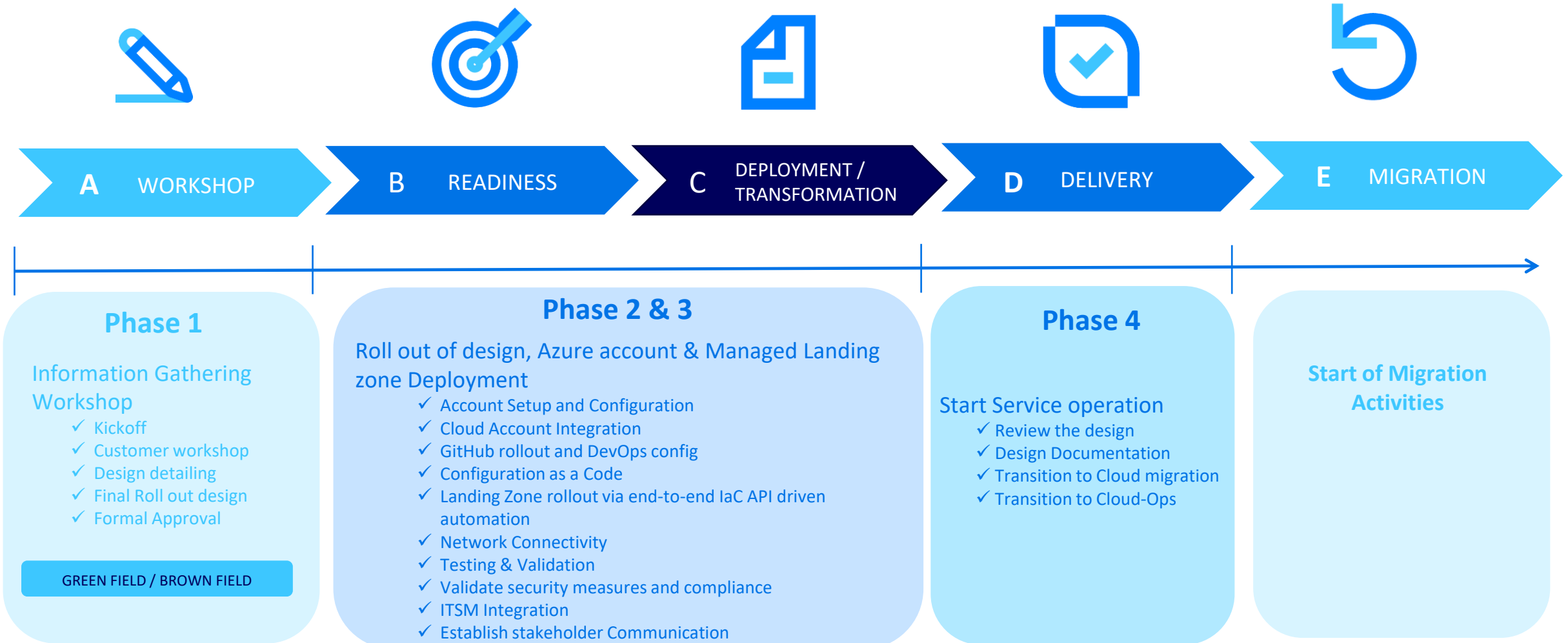


## Cloud adoption frameworks



# High Level Engagement Model

Managed Landing Zone – Ready to migrate in weeks.





# Atos Managed Landing Zone

## Service Description

Atos **Managed Landing Zone for Azure** offering sits at the center all our Azure **Cloud solutions**, for a **seamless** and **secure transition** to the cloud.

Its **scalable** and **modular architecture** accommodates all application portfolios and **facilitates frictionless onboarding** and **efficient workload management**.

Atos **Managed Landing zone** service **simplifies** and **automates** complex cloud deployments and **promotes innovation, agility**, and **cost-effectiveness** while maintaining **security** at every level.



**Scalable**  
Modular Architecture



**IaC and Automation**  
Standardized provisioning workflows



**Built on Microsoft**  
**Well Architected Framework**



**Policy-as-Code**  
Enforces Organizational Standards



**API First**  
Solution Integration



**Code Security**  
Atos SDLC Best Practice



**Operated**  
Globally, Nearshore & Onshore



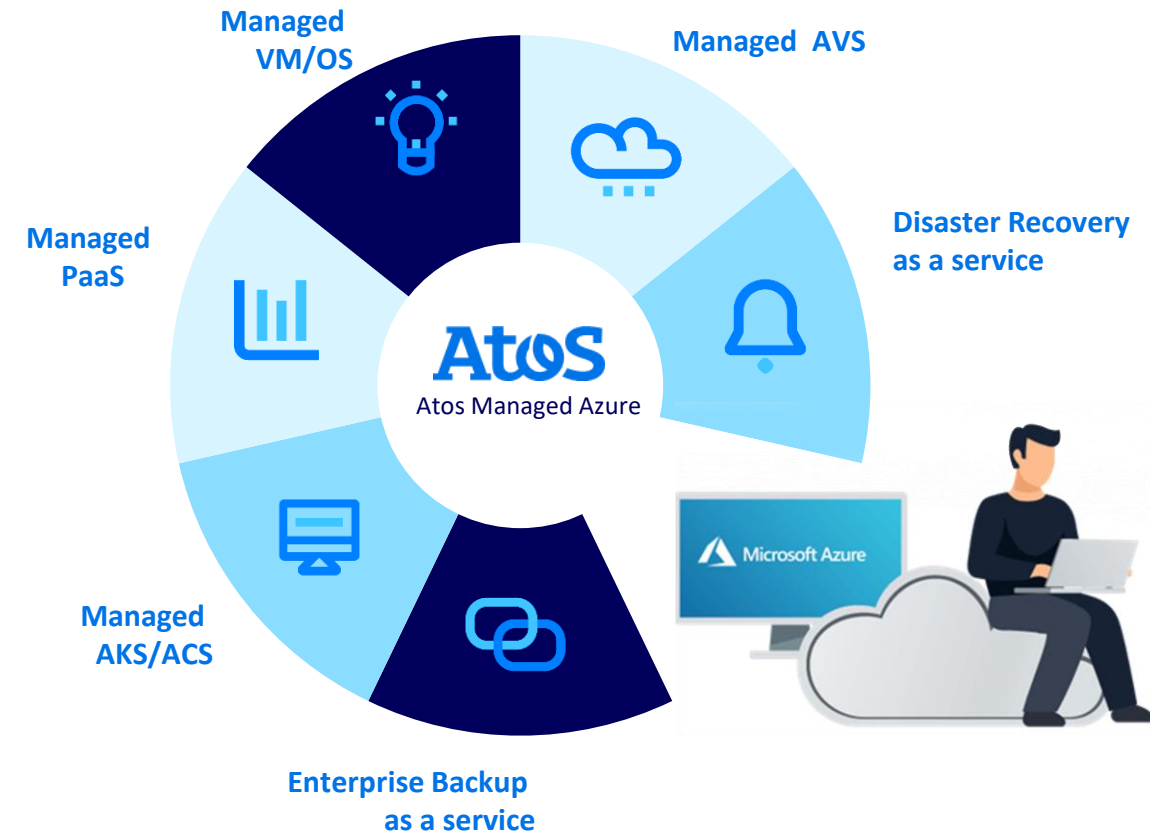
**GitOps**  
as Source of Truth

# Atos Managed Azure

## Service Description

Atos **Managed Azure** Services offer a cloud-native approach for providing managed services.

- Seamlessly integrated with our Managed Landing Zone, to benefit from **robust architectural foundations** and **associated policies**
- With the cloud first approach the services leverages **cloud native solutions** along with **DevSecOps-powered CI/CD** to **automate** complex, iterative, and time-consuming **tasks** associated with managing **infrastructure** and **enforced compliance**
- Highly **industrialized secure** and **reliable delivery** of Azure Managed Services allows **customers** to **focus** on their **core business**





# Managed Azure

Attain the ultimate agility, security, and optimization for provisioned cloud resources



## Technical Service Management

Regular business reviews providing insights, analysis, recommendations and advice on your cloud environment.



## Trend Analysis

Monitoring Data retention for trend analysis to enable baseline and insights for future analysis, audit, customer forensic requirements.



## Compliance & Regulatory

Templates, policies and analysis enabling the achievement and maintenance of regulatory frameworks.



## Continuous Improvement (CI)

CI catalogue development and management aligned to Well-Architect frameworks



## Managed Runbook

The Cloud-Ops team will maintain a runbook to automate routine maintenance and respond to system alerts and outages.



## Endpoint Detection & Response

Detection and response to threats, including endpoint protection, vulnerability management and asset management associated to cloud resources.



## Manage Cloud Native Services

Take control of next gen cloud native services, like serverless functions and PaaS. Integrating managed services with all of your Cloud IT.



## Cost Performance Tracking

Provision of established governance and budget tracking, aided by monitoring and automation.



# Managed Azure VM

## VM resource and OS Management

The service is focused on lifecycle management of the VM resources along with OS Management services.

The services emphasis on:

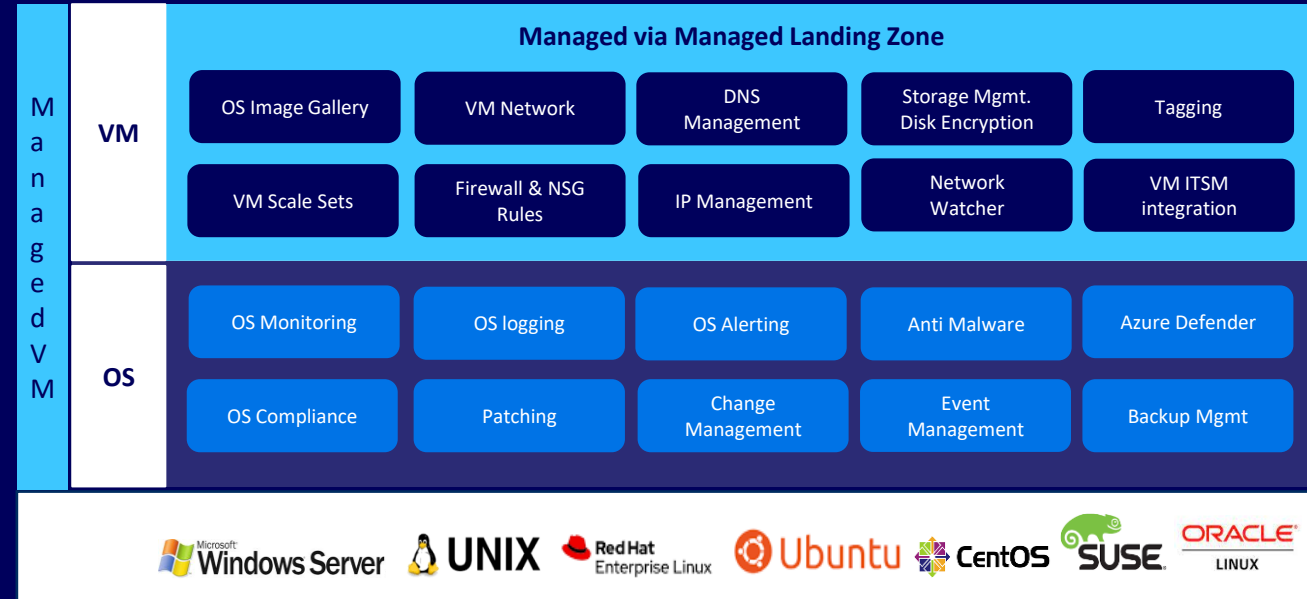
- Provisioning, scaling and cloud compliance of the VM resources
- Comprehensive Monitoring & Alerting of Operating system
- Automated Patching
- Anti Malware
- OS backups management
- Break fix and trouble shooting
- Root cause analysis

  
Infrastructure  
Services

  
On-Demand  
Reporting

  
IT Service  
Management

  
Global/Local  
Operations



# Managed PaaS & IaaS DB

## DBA support for IaaS Databases

- Provisioning, Logging, Monitoring
- Backups & Restore
- Database tuning
- Data Base patch and upgrade management

## Support for PaaS Databases

- Logging, Monitoring and Alerting
- Dashboards and Reports
- Security and Governance
- Backups & Business continuity
- Deployment Accelerators

## Azure PaaS Solutions

### Platform as a Service



Azure SQL  
Managed instance



Azure SQL Database  
Virtualized databases

### Infrastructure as a Service



SQL Server on  
Azure VM  
Virtualized  
machines

## Azure PaaS Solutions



Azure SQL



Azure Cosmos DB



Azure Database for MySQL



Azure Database for PostgreSQL



Azure Database for Redis

# Thank you!

Atos is a registered trademark of Atos SE. June 2023. © 2023 Atos. Confidential information owned by Atos, to be used by the recipient only. This document, or any part of it, may not be reproduced, copied, circulated and/or distributed nor quoted without prior written approval from Atos.

The Atos logo is displayed in white, bold, sans-serif font. The letter 'o' is stylized with a white circle inside it. The background of the slide is dark blue with two large, light blue curved shapes: one in the top right corner and one in the bottom left corner.