



SHOPFLOOR TRANSFORMATION

Transparency and management
Efficiency and optimization

Cost

Quality

Punctuality

Productivity

Competitiveness



SHOPFLOOR TRANSFORMATION



Increase transparency



Promote sustainability



Improve efficiency



Accelerate digitization

SERVICE & CONSULTING

Automation

IT Integration
Integration

CUSTOMER SUCCESS

Support

TRAINING

FLEXIBLE SOLUTION KIT



Advantageous SaaS price model



Operative in some hours



Scalable and international



Security comes first

faurecia



Downtimes are hurting efficiency

How can we detect downtimes right away?
What are our actual MTBF and MTTR?

No metrics for objective assessments

How great is our potential for improvement?
How can we get metrics without exorbitant investment costs?

Order status unclear!

Which orders are being actively produced right now?
How far along are they?

Excessive production costs

Is the output of our machines too low?
Are there too many rejects?

LACK OF TRANSPARENCY No real-time monitoring!

Are machines deviating from the planned output volumes?
Is everything in the good range?

Communication is hard

How can we introduce standardized, automated reporting?

The ERP planning figures aren't right!

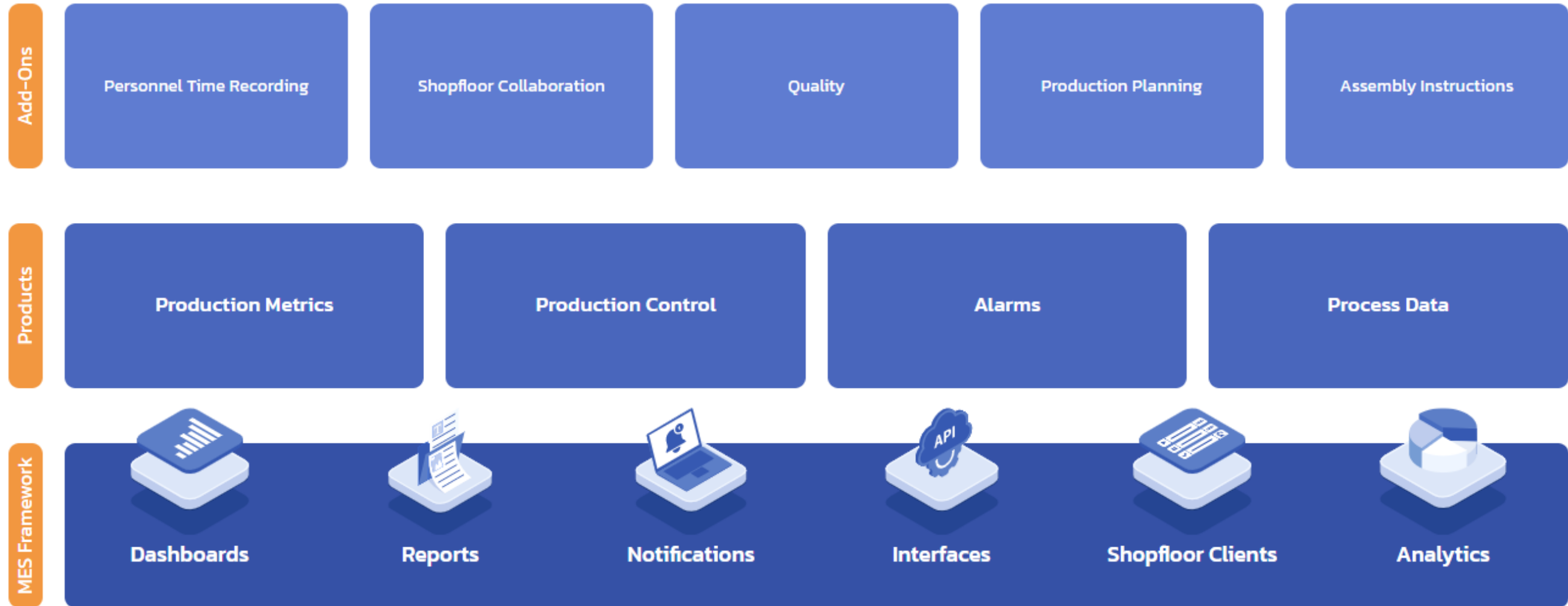
How can we calculate deviations from plans?

Lack of personnel not detected

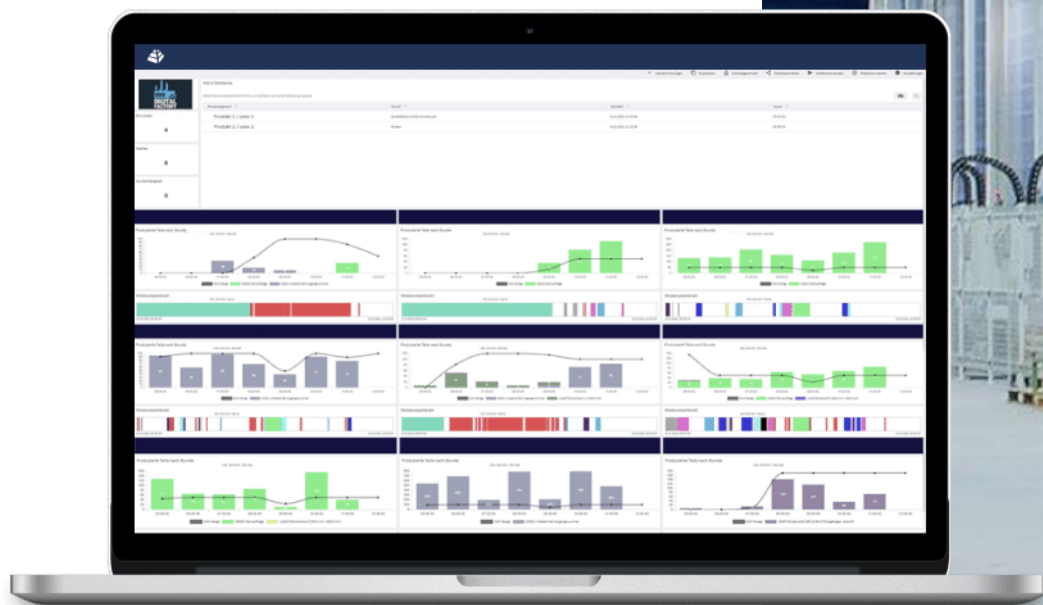
How can we tell if production shortfalls are being caused by insufficient staff?
Are inappropriate worker qualifications causing problems?

Headcount too high!

How many people are working at which machines?
How many worker-minutes does it take to make each component?



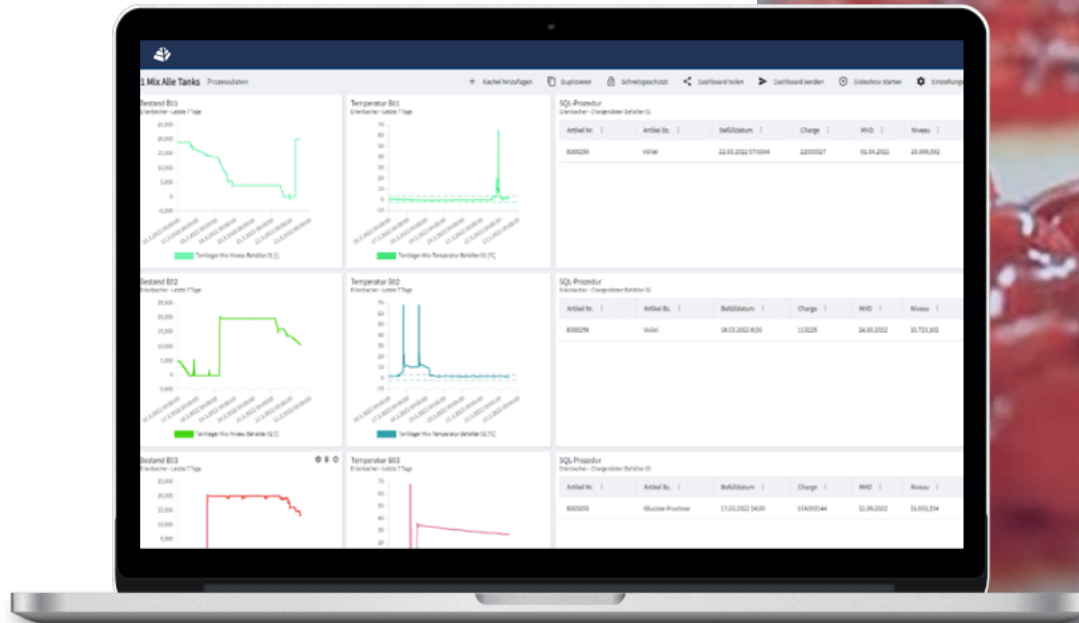
SHIFT MONITORING



PACKING MONITORING



DATA ANALYTICS

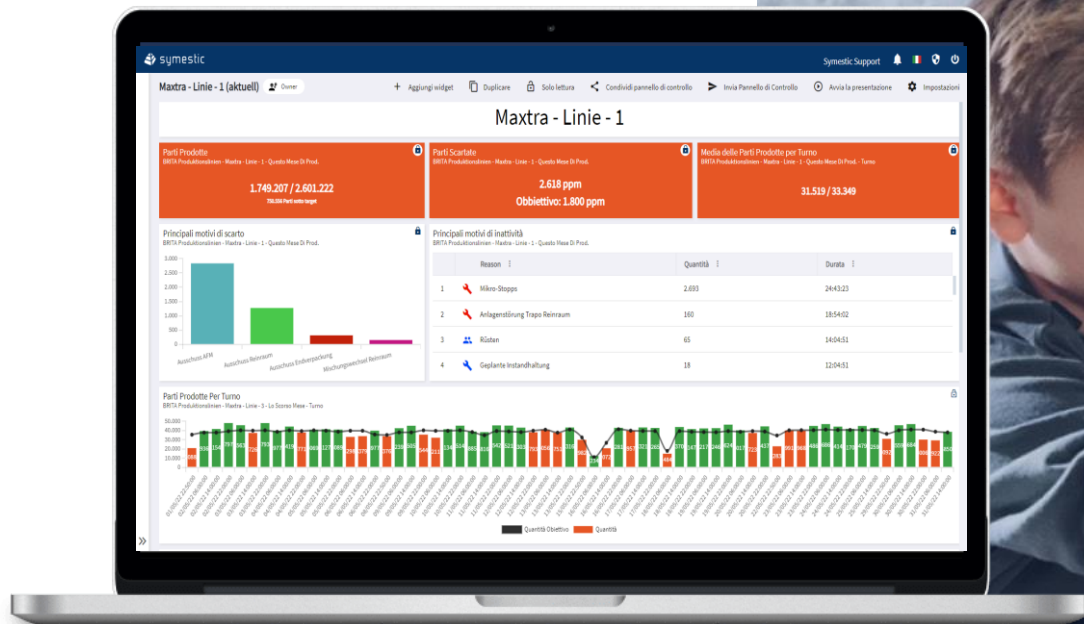


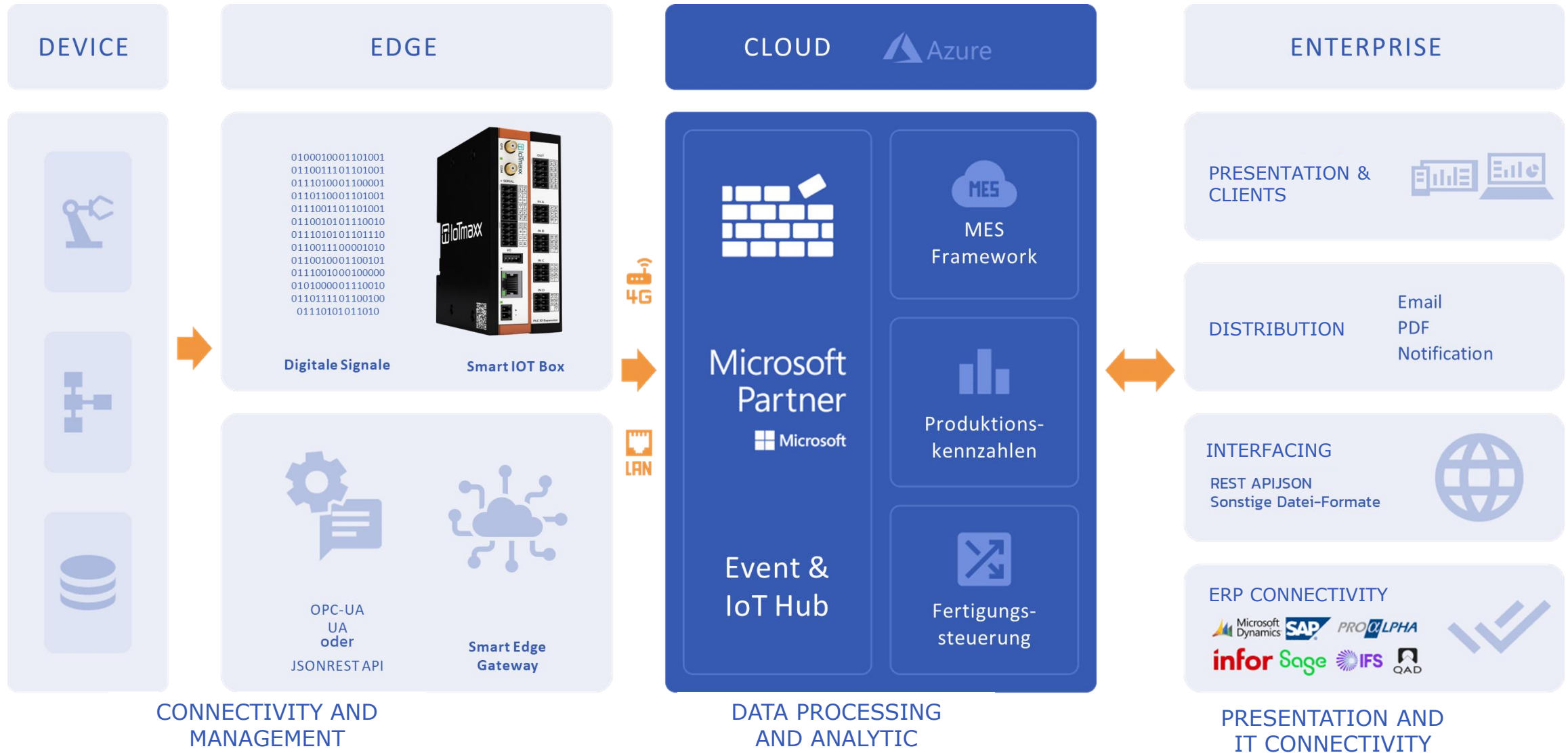
PERSONEL TIME RECORDING





PRODUCTIVITY MONITORING





-15% Working Capital

100% ROI within a few days

OTD 15% improved

What can we do for you?

Bis 20% More productivity within 4 weeks

-10% Scrap

+ 1,5 MIO € Cash Flow By reducing IT infrastructure costs

Bis +20% Turnover

#1 MES Cloud Platform for the Digital Enterprise



symestic



symestic GmbH

+49 6221 72653-400
sales@symestic.com

Gewerbestr. 10-12
69221 Dossenheim
Germany