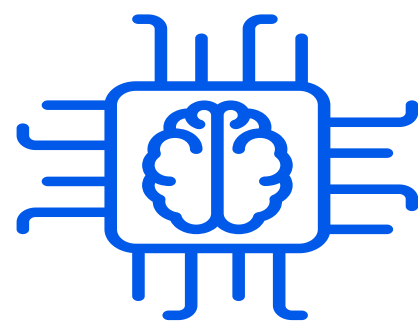




Stemly Demand Planning

Forecast and plan for demand across all channels in your supply chain



AI-powered forecasting can improve forecast accuracy by 30 to 50%



Efficient inventory management can lead to a 20% reduction in working capital



Reduce up to 65% in lost sales due to out-of-stock situations



Enhance organizational collaboration and improve planner productivity by 10%



About Us

Stemly's decision intelligence platform delivers **autonomous forecasting and optimization**, empowering enterprises to make better and faster **interconnected decisions** in **supply chain** and **finance**, while integrating **sustainability** into strategy and planning.

Trusted By Our Investors



www.stemly.ai

Get in touch for a product demo now!

✉ sales@stemly.ai

📍 #12-01 Capital Tower
168 Robinson Road
068912 Singapore



Forecast and plan for demand across all channels in your supply chain


Stemly's demand planning solution, powered by artificial intelligence, delivers stellar forecasting accuracy, with customer-first workflows that account for nuances across channels.



Advanced machine learning



Multi-dimensional demand analysis and insights



Workflow driven consensus forecasting



Configurable exceptions and thresholds



Data aggregation and disaggregation



Configurable user security