

FULCRUM  
DIGITAL **FD**

# FULCRUMONE

Accelerating Digital Transformation

The velocity of change is higher than it ever has been. Going 'Digital' is not an option. It's a pre-requisite to business success.

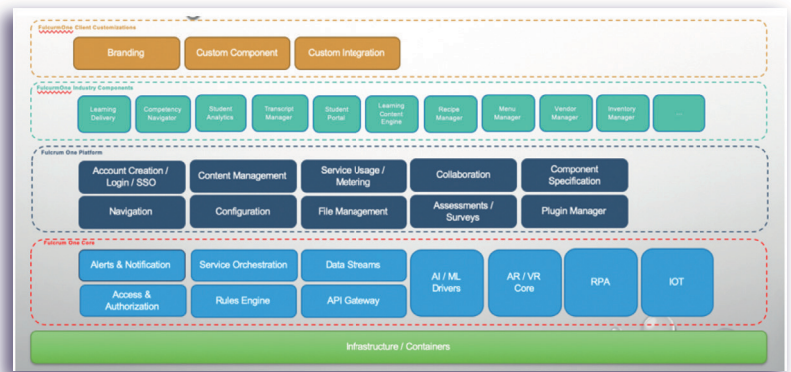


- Are you looking to cut the cost of maintaining your software portfolio by 40%?
- Are you experiencing delivery issues with your software engineering?
- Does it feel like your software engineering process hasn't changed since the 1980s?
- Are your software systems becoming an entangled mess?
- Would you like to reduce software maintenance by 50% or more?
- Are you looking to change the way your software is managed?
- Are you looking to TRANSFORM your business?

**If you answered "YES" to any of the above, FULCRUMONE is your solution.**

## How does it **work**?

Some platforms offer reusability. Some offer acceleration. Some offer scalability. FulcrumOne offers all of this, enabling you to operate and transform your business faster, cheaper and easier. Composable architectures are the only path forward. Aggregation of software components, hitherto an idea, has come to fruition.



FulcrumOne combines horizontal and industry vertical components to deliver not just a technology solution, but a business solution accelerator. It aims to integrate all your digital transformation needs into one centralized low-code business platform

**The Building Blocks of Success**

Using a low-code platform core, plug and play any components to assemble the right solution needed to meet your business goals

**Digital Acceleration**

With little to no coding required, development can be done faster than ever before, reducing the time to market for your new ideas!

**Efficiency and Reusability**

Take any of our pre-built components and compose as needed. No need to develop from scratch! FulcrumOne enables your engineers to work smarter, not harder!

**Dynamic Scalability**

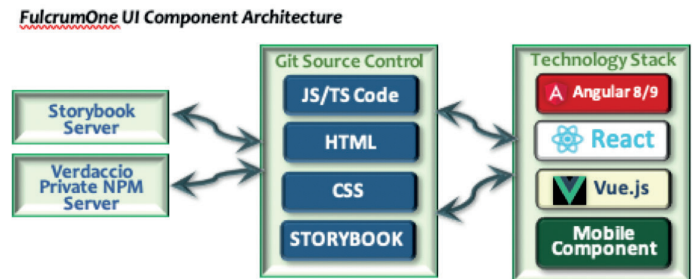
Leveraging cloud elasticity ensures that your software is reliable and up to the task. Scale your platform and components up or down any time as needed.



## Save Time and **Reduce Cost**

Our clients using FulcrumOne enjoy the benefits of reusable components, development acceleration, and scalable architecture all in one powerful business tool!

- Faster time to market for solution development
- Cost reduction and less development time with Workflow-based Engineering and a Microservices-based logic layer.
- Rapid solutioning to ensure you're hitting your SLAs.



Compared to other applications, FulcrumOne enables relative simplicity in how it helps clients in solving business problems. Its powerful and straightforward architecture gives clients the ability to focus more on how to address complex business needs rather than concern themselves with application complexity.

## Assess, Adopt and **Accelerate**

**BUILD OR BUY**

Whether you're looking to build something new for your business or buy one of our industry-specific platforms, FulcrumOne can deliver with a strong digital partner ecosystem. With a detailed assessment of your enterprise technologies and business processes, we can find the right way forward for you.

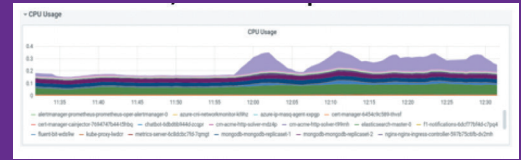
## The underlying premise – **Software Composability and Aggregation**

The idea of component reuse has practical value in the marketplace, but few firms make the investment to offer it. Fulcrum Digital, however, is making an ongoing investment to provide a platform of reusable components for its clients. The FulcrumOne (F1) Platform in the Azure cloud, running on a containerized architecture, supports capabilities most valued by our customers, who, through the F1 Platform, realize both acceleration benefits, by using already-developed common components that require only configuration, and scalability benefits built into the platform architecture, which automatically expands according to client needs.



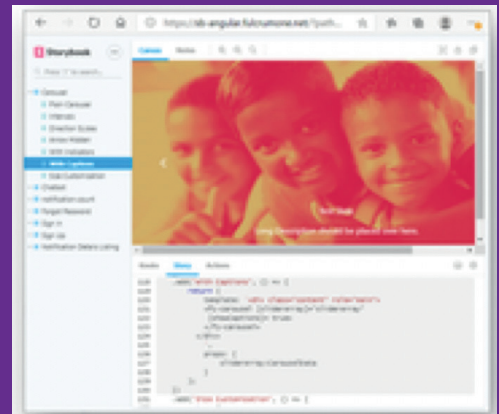
## Graylog and Grafana Monitoring

An open-source log management tool, this helps monitor the oversize volumes of log data in large environments, like the production environment Fulcrum requires to support the long-term needs of F1. The Graylog dashboard tool records full and complete point-in-time status every 10 seconds.



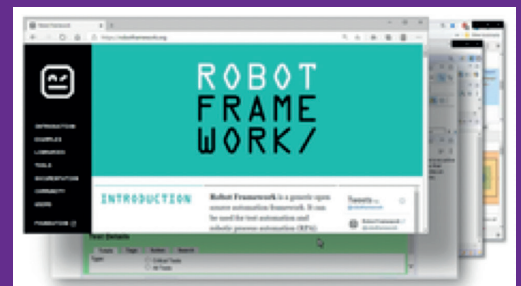
## Storybook

Storybook provides a development environment and “playground” for user interface (UI) components and technical documentation. The tool enables developers to create UI components independently and showcase components interactively in an isolated development environment. The F1 Platform uses Storybook to develop UI components that run in the React, Vue js, and Angular coding languages.



## Robot Framework

The economy, speed, accuracy, and versatility of the Robot Framework makes it the best choice to ensure the quality of reusable components on our F1 Platform. The Robot Framework itself provides efficiency and speed, but with the SonarQube usage during development to shape code quality, errors are very manageable, even minimal, during the testing phase.



## Product Wiki

supports broad internal organization understanding of the platform, especially across the technical and marketing communities.

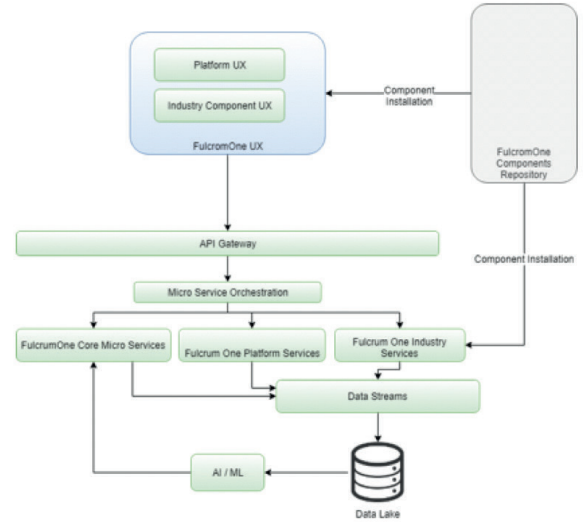


# Architecture

The FulcrumOne (F1) architecture and design, more than any other software platforms about which we at Fulcrum are aware, embodies abundant values and capabilities designed around client needs for reusability, development acceleration, scalability, and affordability. Simply put, it's a cutting edge tool. Several stories weave together on the path of creating F1.

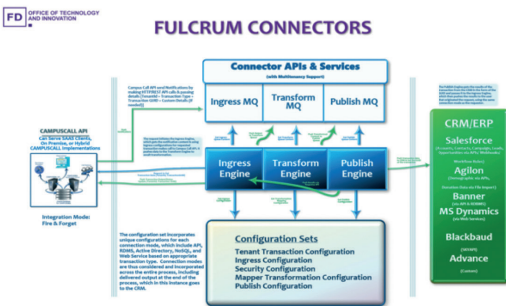
Understanding the story has been a challenge for lots of our Fulcrum colleagues because F1 exists in the abstract.

Reusable components save significant productive time for our clients. The savings from each component vary from as little as 4 hours of effort saved to as much as 40 hours of effort saved.



# FLEX – The F1 Connector Framework

- In era of serverless architecture microservices, complement your data integrations with FulcrumOne light weight integration channel Connectors using declarative bindings.



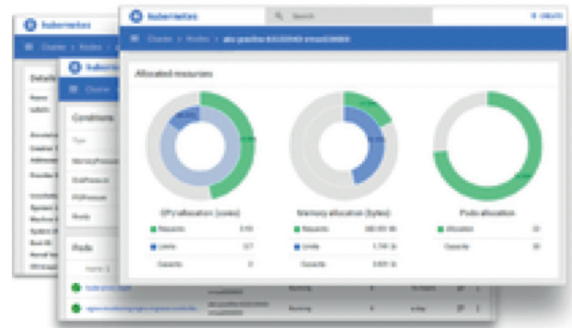
- FulcrumOne Connectors facilitate easy setup of data exchange between ERPs/CRMs/Legacy Systems with its range of supported connectivity channels supporting Webhooks, API, direct RDBMS, WebServices, NoSQL etc modes. Declarative bindings make it easy to setup integrations across ERPs/CRMs/Legacy Systems using API to API or API to database or WebServices to Database etc creating any possible combination of the connectivity modes.

- FulcrumOne Connectors can work in “On-Premise”, SAAS and Hybrid modes.



- The Connector Engine can work in bidirectional mode. All published data returns the GUID & Status of the target back to the source through registered communication channel. The Source and Target Systems can be swapped with mere small change in configurations FulcrumOne Connectors has loosely coupled and highly configurable Ingress, Transform and Publish Engines. These configurations provide control, handle the security, connectivity, data transformation and data flows needed for your integration. Each element has extensive supported protocols of operations.
- Security supports Basic Authentication, OAuth & Token based Authentication, Subscription based authentications, AD & LDAP based Authentications.
- Connectivity for Ingress & Publish Supports Webhooks, Web API & REST Services, WebServices, RDBMS (SQL Server, Oracle, MySQL, PostgreSQL), NoSQL
- WIP – Batch Transfers, FTP, Cloud Storages Support.
- Transformation supports – Complex & Calculative transformations, Third Party Services Integration
- Above all Multitenant & Multi transaction support. Each transaction can be set to integrate and publish data through its own set of configurations.

- Ability to Ingress data from multiple sources
- Ability to Publish data to multiple systems
- Ability to integrate third party systems for transformation
- Backed by Extensive Logging
- Reliability though Service Bus & Queue handling
- Containerization for Easy Deployments & Scaling support



### Out of Box Connectors available for -

- Salesforce (Contacts, Accounts, Campaigns, Leads, Opportunities etc via API/Webhooks/WorkflowRules)
- Agilon (Demographic via APIs, Donation Data via File Import)
- Banner (via API & RDBMS)
- MS Dynamics (via Web Services & RDBMS)
- Blackbaud (SKYAPI)
- Advance (Custom)



#### Jersey City

111 Town Square Place Suite  
1215, Jersey City, NJ07310

Tel: +1 201-523-7555  
Fax: +1 973-379-3266

#### Chicago

1051 Perimeter Drive, Suite 670,  
Schaumburg, IL 60173

Tel: +1 312-416-6683

#### São Paulo

Av. Paulista, 1374 - Bela Vista,  
São Paulo SP, 01310-100

Tel: +55 11-4063-8393

#### Argentina

Gorriti 6046 OF.801, Palermo,  
C1414BKN CIUDAD AUTÓNOMA  
DE BUENOS AIRES, Argentina

Tel: +54 9-113-814-0345

#### Melbourne

HWT Tower Level 23, 40 City Road,  
Southbank, Melbourne, VIC 3000

Tel: + 61 3-9001-5938

#### Lisbon

R. Carlos Alberto da mota pinto,  
17 3rd Floor A, Amoreiras  
Portugal, Lisbon 1070313

Tel: +351 21-122-71-80

#### London

1 Fore Street, London, EC2Y 9DT

Tel: +44 (0) 203-865-8418

#### India

405, VIP Plaza, off New Link Road,  
Andheri (W), Mumbai 400053

Tel: + 91 22-6675-6270

23/4, Rajiv Gandhi Infotech Park,  
Phase 3, Hinjewadi, Pune 411057

Tel: +91 20-6676-6000