

BIM

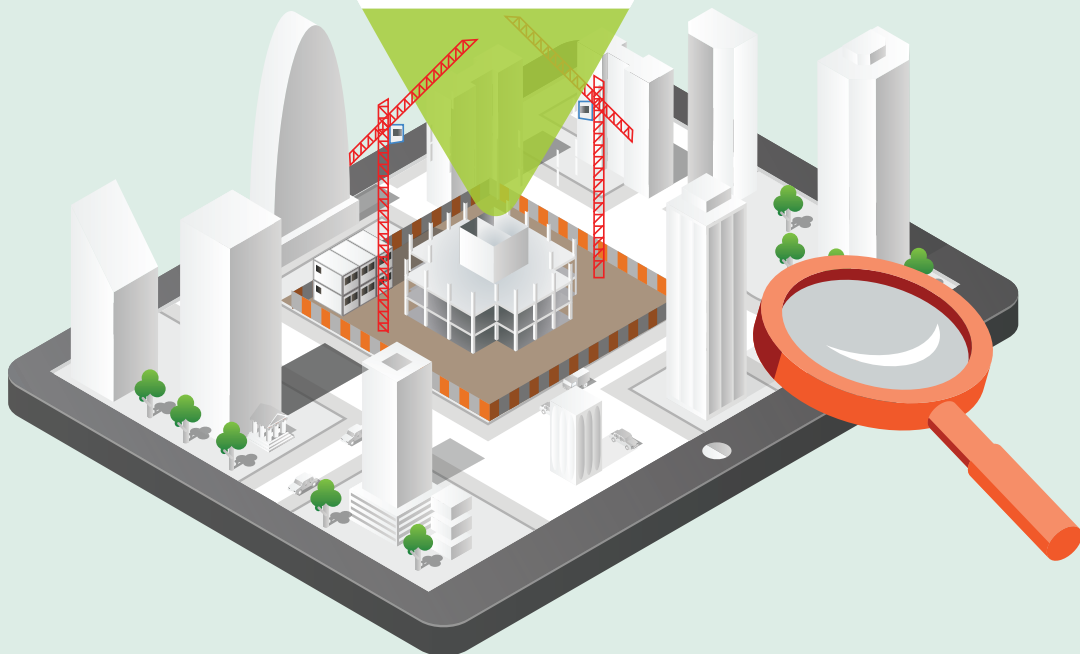
**REALTIME
DATA VISUALISATION**

**OPERATIONS
OPTIMISATION**

**PROCESS
DESIGN**

**INTERNET
OF THINGS**

**WORKERS'
SAFETY**



ISSUES

WORKERS' SAFETY



1 / 10

1 out of every 10 construction workers has an accident on site each year.



1 / 200

1 out of every 200 workers dies due to work accident during one's professional career.



3H / D

3 hours are wasted each day correcting previous work due to operational inefficiency.



25%

25% of the total cost of a construction project are dissipated due to organisational issues.

ACTIVITY SECTORS

CAD.42 protects workers and optimises operational processes by offering a system built upon predictive risk detection capabilities allied to an IoT ecosystem. The software solution automatically generates activity reports that allow for cost optimisation on site supported by a Lean Management approach.

Our proven offer within the construction sector is naturally "portable" towards other markets.

As security and LEAN aspects are inherent in a multitude of areas our tools are compatible with other sectors, we also respond to companies needs in the industries listed below:



HOW OUR SERVICES WORK

Our ecosystem of IoT devices allows us to keep track of your key resources on site.

Our algorithms analyse incoming geolocation data in realtime, allowing us to give critical safety and performance information.



Operators are alerted in real time of hazardous situations detected by our system.

All information collected can be viewed in 3D live and replayed from within the digital model.

A virtuous circle to improve safety and production efficiency on work site in realtime.

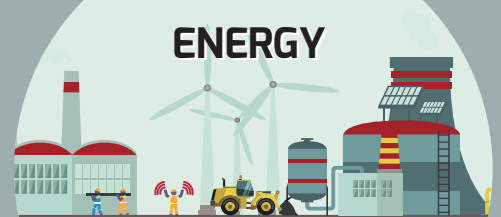
MAINTENANCE



LOGISTICS



ENERGY



CAD.42 PRODUCTS

Smart & Connected

- Sound alerts
- Light based alerts
- Machine washable



VEST.42 is a connected vest equipped with LED and sound alerts which are automatically activated when its wearer finds themselves in a risky situation. **We can integrate our technology in your workwear on demand.**

- SOS signal
- Zone detection
- Sound alerts
- Fall detection
- Inclination detector



BOITIER.42 detects risky situations and alerts emergency services. An SOS button makes it easy to call for help when needed. Thanks to this device, **its users can also flag a danger zone when one is located.**

- Range: 3, 8 or 15 m
- Autonomy up to 3 years



PIROS.42 allows for an easy delimitation of danger zones. With an augmented safety cone, it becomes easy to define areas subject to warnings or to certain requirements & restrictions. **PIROS.42 can also be placed on a vehicle or on a fixed location.**

- Sound and vibration alert
- IP 67 & ultra-resistant
- Autonomy up to 10 hours
- Zone detection
- Fall detection
- Inclination and immobility detection
- Vital signs survey
- Emergency call

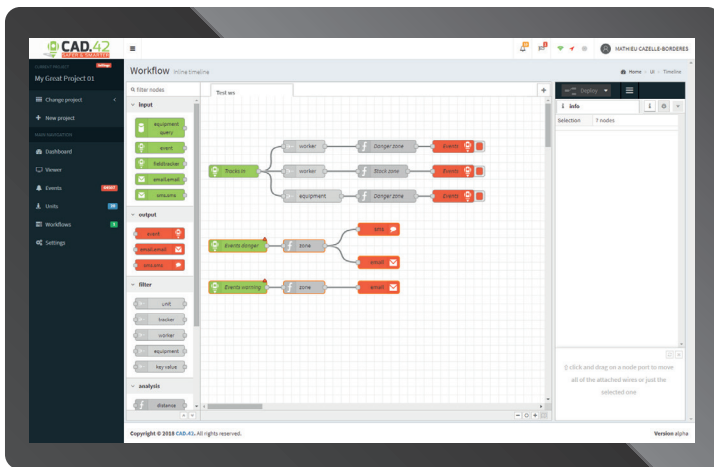


ELSA.42 is a touch-sensitive bracelet alerts its wearer as soon as it enters a danger zone by a sound and vibration signal. The watch displays the sign corresponding to the type of information. **Compatible with PIROS.42.**

All our products are compatible with each other and communicate together.

FIELDTRACKER

*Your intelligence
as a moving force*



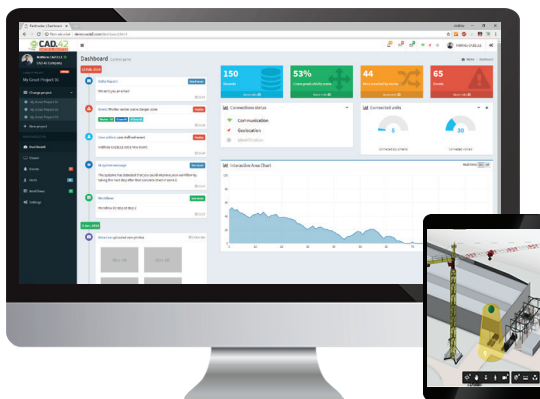
- Data management tool
- Email and SMS despatch management
- Behavioural management

Our nodal intelligence design tool offers the possibility to process data and incoming events according to your own expertise and in an independent fashion. **This gives you control over the behavior of the application in terms of event and data management.**



- BIM 3D viewer
- Zone editing tool
- Realtime geolocation data visualisation

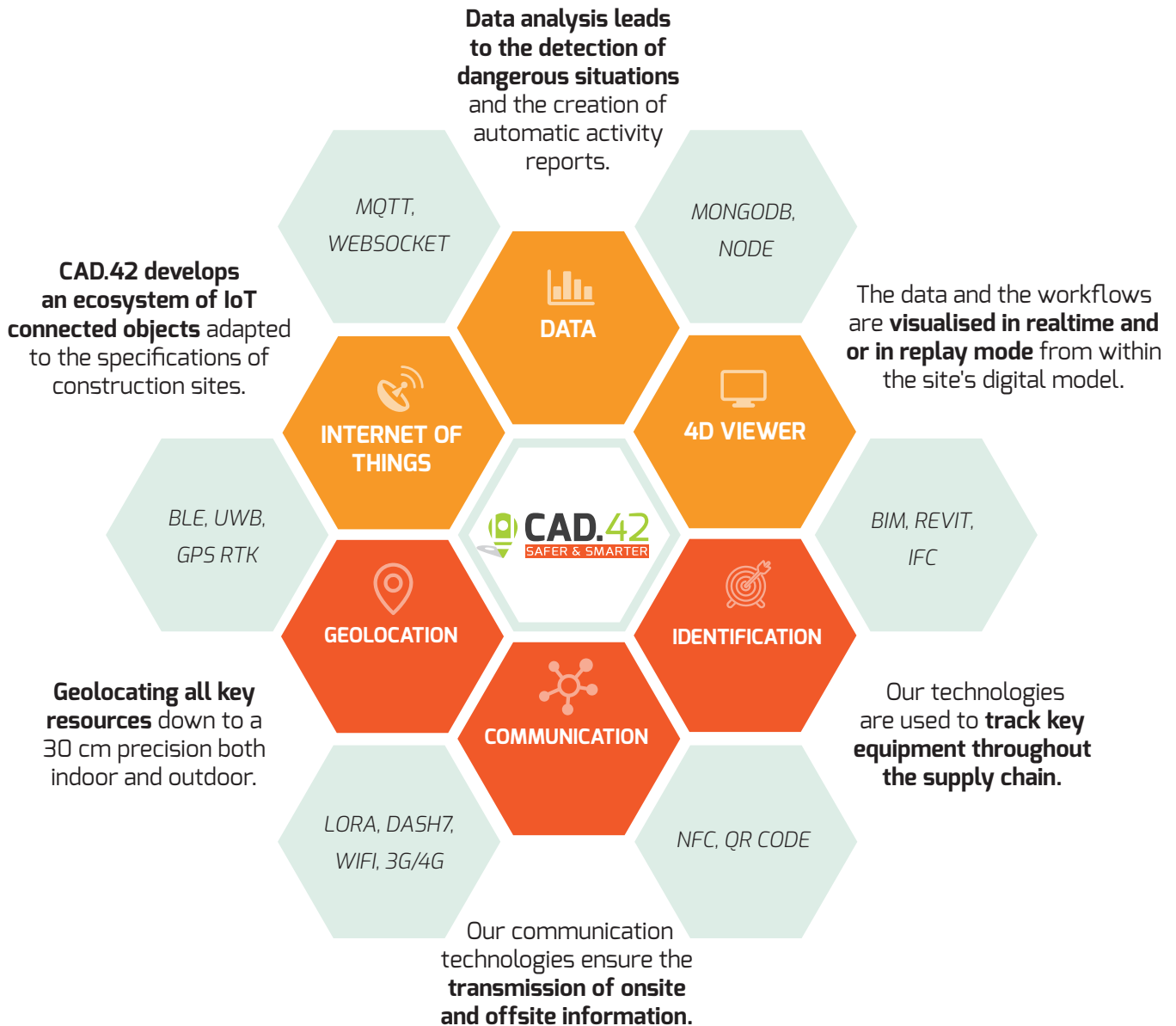
Track your human resources and equipment in our 4D Real Time BIM viewer. Your data is brought to life within a 3D spatial environment in realtime or in replay mode. **Your BIM model finds thus a new valuable use in a dynamic environment.**



- Events table
- Automated report generation
- Deployed resources management
- Secured user access management

*Fieldtracker is an application that works in the cloud
or from a local server based on site.*

THE TECHNOLOGICAL BUILDING BLOCKS



COMPETITIVE ADVANTAGES



ANONYMITY OF WORKERS

Our method of data processing allows us to ensure the anonymity of carriers of the geolocation system.



ACCURATE GEOLOCATION

The technologies used guarantee us an accuracy down to 30 cm both indoors and outdoors.



REALTIME DATA

Data is analyzed in realtime with worksite alerts or 3D visualisation.

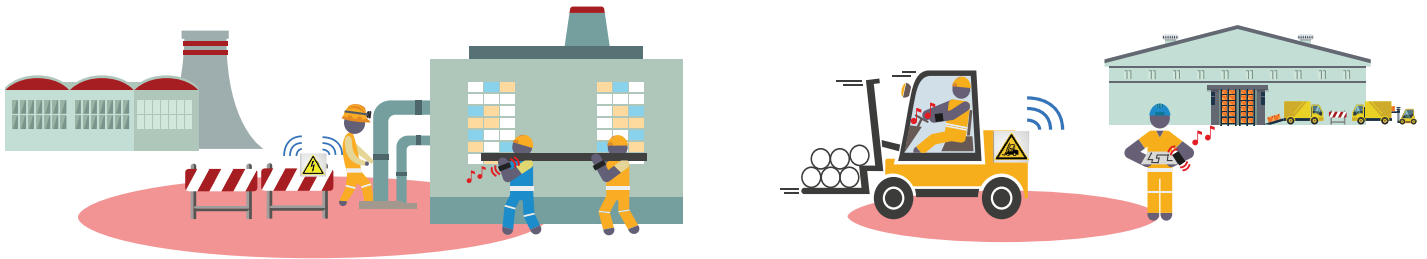


PATENTED TECHNOLOGY

Several patents have been filed on the technologies we offer to our customers.

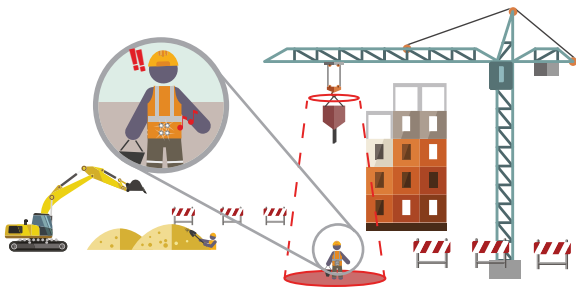
SOME USE CASES

Augmented Warning Signage & Vehicle / Pedestrian Collision Preventing



Operators entering a danger zone defined by **PIROS.42** are warned whether the danger is still or moving by an audible and vibratory signal via our connected bracelet **ELSA.42**.

Overhead crane alerts



Operators located in the area under the cone of a crane are warned by a light and sound signal from our **VEST.42** connected vest.

Isolated worker



Lone operators can warn emergency services at any time, thanks to our connected equipment **BOITIER.42**.



Safety

Prevent the risk of accidents.



Performance

Optimize team productivity.



Logistics

Track equipment in realtime.

Recognised by

BIMWORLD
PARIS

Winner of startup
contest BIM WORLD
2017



Winner of startup
contest « Pépité
Tremplin Ilab »
2017



« bâtisseur
de demain » award
Petit Poucet contest
2017

VIVA
TECHNOLOGY

Winner of the « Risk
Inventory & Manage-
ment » challenge
Vivatech
2017



Winner of the « Pitch
Sessions » by Eurovia
à Intermat
2017



Winner of contest
« Rendez-vous Carnot »
2018



Prize of the jury
« Challenge Paris Saclay »
CES Las Vegas
2018



Finaliste in the
EDF PULSE
challenge
2018

Trusted by



Partnered with



📍 10, rue de Penthièvre - 75008 Paris

☎ +33 1.84.88.79.68

✉ contact@cad42.com

🌐 www.cad42.com



@CAD42_official