

CENTRAL DATA PLATFORM

Intelligent Automation



In a world where everything is digital what are the biggest barriers to growth in your business? Is it disparate systems that don't talk to each other? Lack of cohesive data? An IT team that's overwhelmed with the demands of redundant systems? **Any one of these can stifle growth and innovation.**

Imagine that instead of siloes, redundancy, and manual effort, the systems that support your business were connected and the core processes that run your business streamlined. In addition, imagine if the solution was intelligent, and could alert your teams for opportunities to collaborate or possible trouble ahead. And finally imagine that the solution required very little investment and IT expertise to setup and manage.

This next generation of smart integration technology exists, and it is called Central.

AUTOMATION SPECIALTIES

Sales and Marketing

- Lead to Cash
- Marketing Campaigns
- Payment Processing
- Commission Payouts
- Contract Renewals

HR & Finance

- Onboarding
- Offboarding
- Payroll Processing
- Expense Reimbursements

Project Management

- Project Creation
- Project Close
- Time and Expense Entry

The result of seamlessly connecting my Sales, Financial, HR, Customer Service, and Collaboration Systems:



Scale your business
without increasing your
administrative head count



Boost the ROI
of all your line of
business systems



Low Code Approach
brings value to the
business faster

“Central has streamlined thousands of hours of manual work out of our back office. Because of Central, we can continue to scale our business without adding to our head count.”

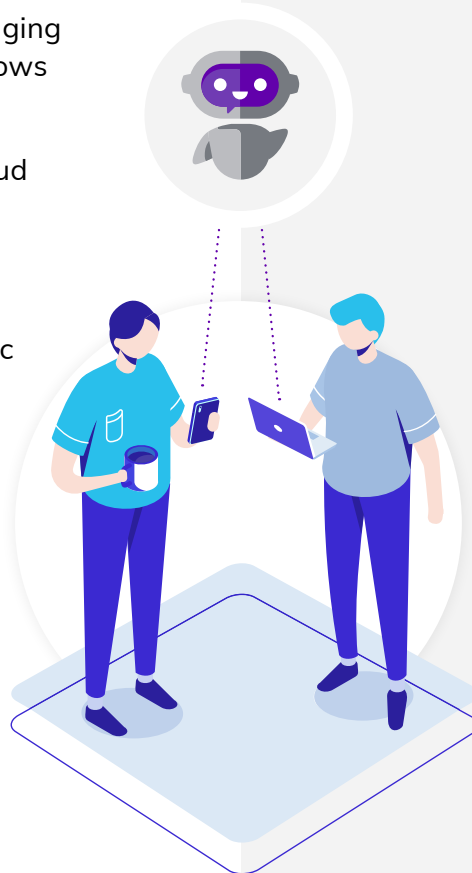
— Emily Kemp, Controller, Centric Consulting



THE DETAILS ON CENTRAL

Central is a cloud based Integration Platform as a Service (iPaas).

- Highly scalable and secure messaging architecture running on the Windows Azure Cloud
- Pre-built connectors for major cloud systems like Salesforce, Microsoft Dynamics, Oracle NetSuite
- Low-code/no code integrations to support complex Business Logic and Field Mappings
- Works in parallel with other integration tools such as ETL, RPA and the Microsoft Power Platform
- Fraction of the cost compared to the competition — 10K / yr for two connectors, \$2,400 / yr for each additional connector



CENTRAL IN ACTION

Our mission is speed to value. This is a snapshot of what our process looks like:

- TeamCentral architect runs a free 2 day assessment of your current architecture, systems, and requirements
- Your Central Integration Platform environment is setup
- Your Central Configuration is set to map your specific requirements
- We connect your data by building what we call the Central Index
- Your setup is tested and prepped for production
- You go live and receive world class support

MARC JOHNSON

Founder, Team Central

☎ (513) 382-1497

✉ marc.johnson@teamcentral.io

