



---

Global Leader Bringing  
Media Collaboration to the Cloud

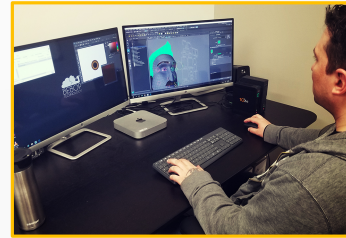
---





BeBop is software that lets you remotely access an extremely powerful computer in the cloud. A machine so powerful that you can remotely run all of the processing-heavy industry-standard tools you work with every day, from anywhere.

With only a modest internet connection, you can use BeBop to create VFX, edit media files, animate, process images, and collaborate in real-time from any corner of the globe. All with the highest level of security available.



Making Life In The Cloud More  
**CREATIVE**

**INSPIRATION SHOULD NEVER WAIT**

Create and collaborate anywhere, anytime with BeBop's powerful suite of tools.



■ **CLOUD PLATFORM**

Everything you need to virtualize media workflows in the cloud securely, using industry-standard tools and a modest connection.



■ **OVER THE SHOULDER**

BeBop OTS is an economical way to securely collaborate, review and approve remotely, in real-time.



■ **ROCKET TRANSFER**

BeBop Rocket is a secure, hassle free, high-speed service for onboarding your existing workflows and projects into the cloud.



■ **DISASTER RECOVERY/  
BUSINESS CONTINUITY**

BeBop is the only affordable, scalable, and viable end-to-end Disaster Recovery and Business Continuity solution for M&E.



■ **MANAGED SERVICES**

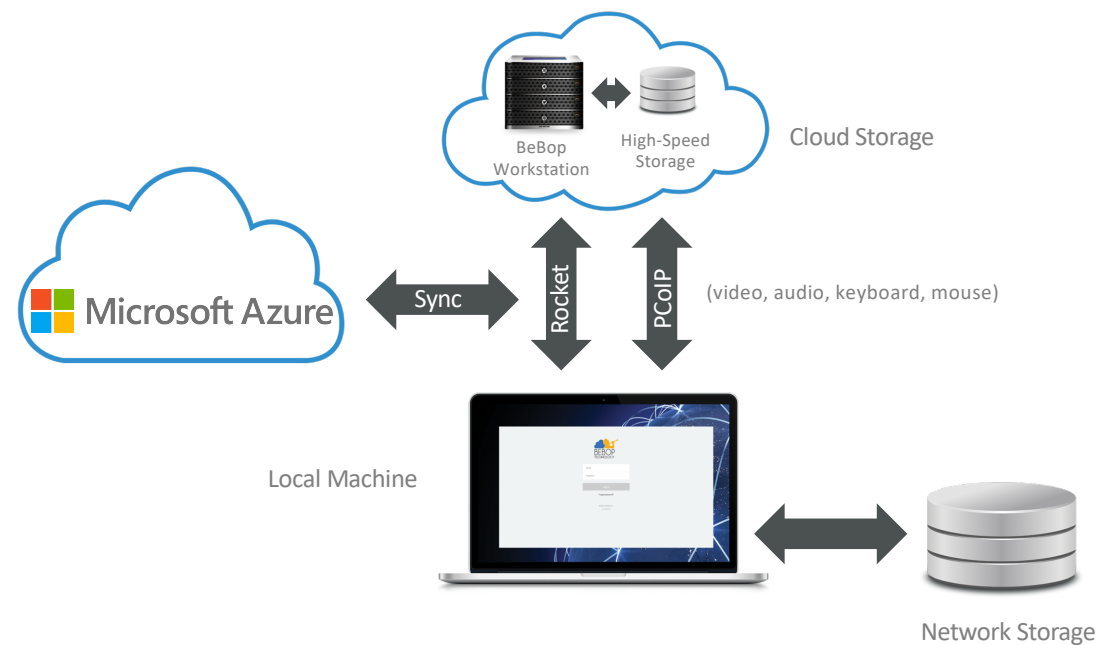
Create custom solutions for moving to the cloud with the world's most experienced media and cloud workflow experts.





Making Life In The Cloud More  
**CREATIVE**

**INSPIRATION SHOULD NEVER WAIT**  
Create and collaborate  
anywhere, anytime with BeBop's  
powerful suite of tools.







## Virtual Workstation Components

### Virtual Machine

Any configuration;  
regions across the  
globe with GPU  
resources (i.e.  
2.30GHz/122GB  
RAM)

### NVIDIA GPU

One or more  
display-capable high  
performance GPUs  
(Tesla M60, Tesla  
P100, T4)

### Graphics Driver

NVIDIA driver for  
display and compute  
workloads (CUDA,  
GRID)

### Display Protocol

PCoIP



## Finish in the Cloud. Deliver in the Cloud.

### **Creativity and collaboration with no limits:**

BeBop can support creatives anytime, anywhere, from a modest internet connection.

- Work from home – always secure
- Remote VFX and editing tools – always available
- Instantaneous remote review and approval – anytime anyplace, immediate feedback on the spot

### **Total creative flexibility:**

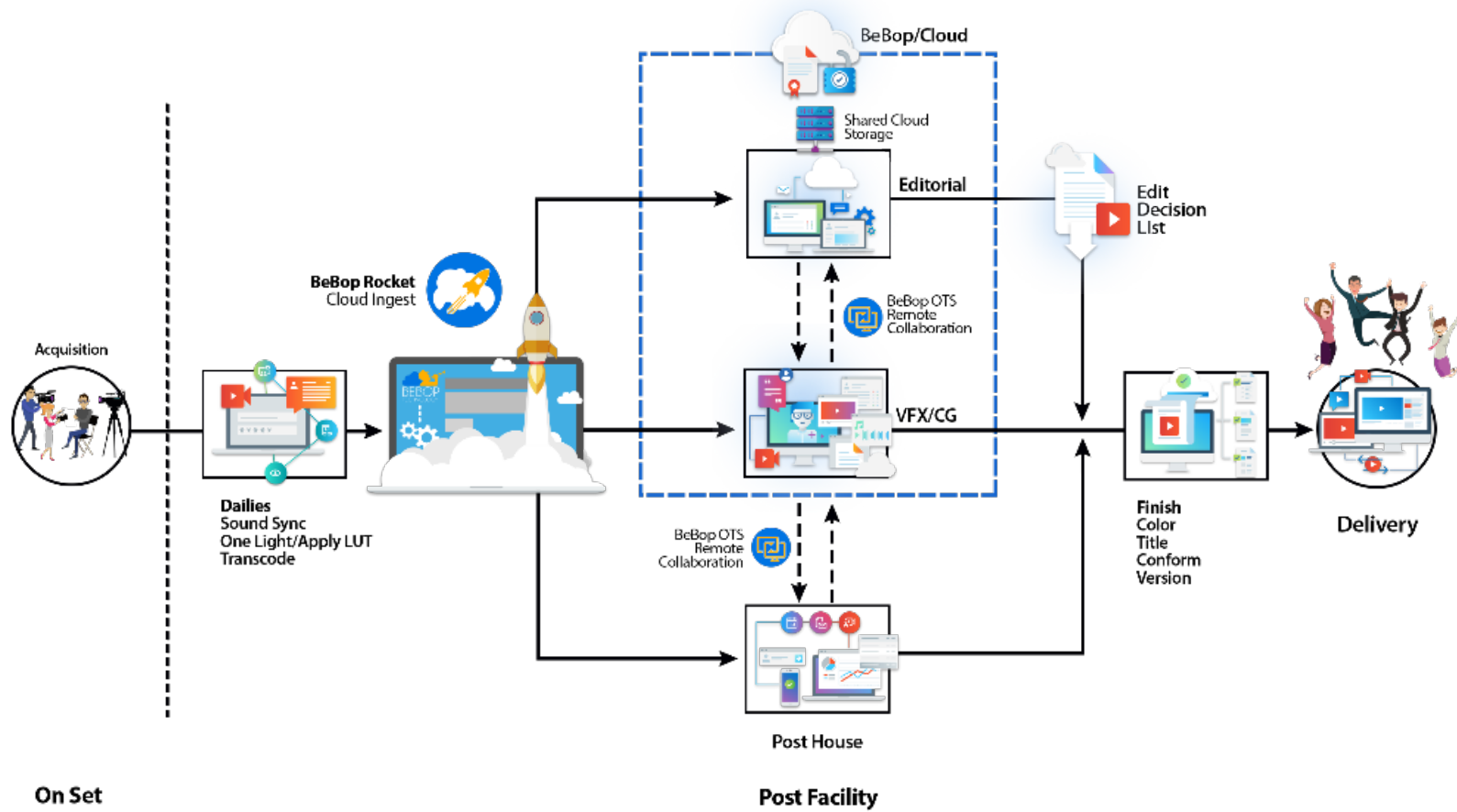
- Expand and contract the number of editors
- Expand and contract locations with ease and expediency
- The same platform for editing, titling, design, VFX, 3D modeling & animation, compositing, and motion graphics. Same workflow, *no additional equipment required to move*



## Transitioning Workflows to the Cloud.

- We configure BeBop to meet a customer's needs with instantly scalable infrastructure and expandable shared high-speed storage to fit any project
- Industry-standard tools for editing, titling, design, VFX, 3D modeling & animation, compositing and motion graphics; Bring-Your-Own-License model (Adobe, Autodesk, etc.) or bundled solutions (Avid on BeBop)
- Supports existing Azure customer accounts or an account fully managed by BeBop
- Subscription provides unlimited access to the BeBop platform, BeBop Over The Shoulder, and BeBop Rocket
- Comprehensive cost, use reports, and analysis to manage your business spend
- Geographic flexibility never possible before – use editors from anywhere without changing your workflow or infrastructure

# Bebop Workflow





**Simply the World's Leader in Cloud Solutions  
for Media & Entertainment.**



# Software On BeBop

For most industry-standard applications BeBop uses a Bring-Your-Own-License model. This means you can work with any applications on BeBop you have a hardware license for, or which provide floating licenses.

Avid on BeBop is coming in fall 2019 and will be a fully bundled solution, enabling Avid Media Composer and Avid NEXIS subscriptions to be obtained directly from BeBop and only on Microsoft Azure cloud.

We're adding additional software every day, so be sure to check [beboptechnology.com](http://beboptechnology.com) for the latest list!





# BeBop Cloud Regions

BeBop supports existing Azure customer accounts or an account fully managed by BeBop.

**BeBop Customer Regions** deploy BeBop infrastructure within your Azure account and region of choice.

- Billing is handled directly between you and Microsoft Azure
- BeBop subscriptions required for each user to access to the BeBop platform
- Leverages BeBop MCP core for overall management and orchestration
- BeBop Managed Services develops site evaluation and integration plan prior to deployment
- Administrative access is required for BeBop to manage your Private Region; high security is maintained by meticulous deployment planning and coordination with technology resources

**BeBop Regions** are turnkey solutions which allow you to utilize BeBop without worrying about maintaining infrastructure in the cloud. Deployment and billing is entirely through BeBop Technology.

- Fully managed and billed through BeBop Technology
- Provides convenience of managed infrastructure
- Removes administrative burden from your technology departments
- Engineers, operations, support, and hardware have significant labor and facilities costs that cannot be avoided... unless you work in the cloud



## Worldwide Support

- 24x7 monitoring of all BeBop Cloud Platform components
- 24x5 support availability within standard 24h SLA response time
- Emergency escalation support on weekend

The BeBop Cloud Platform is supported by both L1 monitoring and L2 operations support teams that are available 24 hours a day, 7 days a week for any platform related issues

Support resources are accessed through a single support portal located at <https://support.beboptechnology.com>



---

Thank You

Contact for questions about BeBop:

[john.miller@beboptechnology.com](mailto:john.miller@beboptechnology.com)

---

