



 ContinuityPatrol™

## An iNTELLIGENT Service Availability Management (iSAM) Suite

VISIBILITY | ACCOUNTABILITY | ORCHESTRATION | AUTOMATION



## Overview

Continuity Patrol enables Real-Time Enterprise Visibility for Intelligent Business Service Availability Management, Orchestration and Automation.

Business Service Availability Management solutions have evolved a long way since 2000s but not far enough; especially in multi-site and multi-mode, On-premise/Hybrid/Cloud configuration situations... that is until Perpetuuti developed Continuity Patrol.

Continuity Patrol is an intelligent, agentless, script-less and automated end-to-end Business Service Availability Management Suite which enables real-time enterprise visibility to CXOs into the financial impact of an IT disruption (that causes unaccounted revenue leakage) and its cascading impact on other dependent business processes. The product uniquely enables “Live Business Impact Analysis” functionality that leverages the dependency definitions and cost data to calculate quantitative financial impacts that can be specific to a single production application, a set of production applications or the entire data center.

Continuity Patrol has a unique command center dashboard that shows IT Services Mapping View, Summary of key parameters for stand-alone & Recovery protected IT services like Service Health, RPO, RTO, Replication Status, Alerts, Impact, and Priority, and provides an IT Service Availability summary of configured IT services. It helps nailing down the exact IT failure for the IT personnel to take corrective actions on time.

Continuity Patrol is unique in the Business Service Availability Management market as it can help CXOs make well informed business decisions with reduced RTO by enabling real-time visibility into the financial impact of a critical IT service, unplanned outage or degradation of service and their cascading impact on dependent IT services. With Continuity Patrol, Availability Management managers can perform what-if modeling and make a better business case for the cost of downtime.

Continuity Patrol™ can be integrated with popular Mobile platforms such as iOS, Android, Windows and BlackBerry OS.

## Critical Modules of Continuity Patrol

### Business Service Availability



- ↳ Continuity Patrol can help CXOs make well informed business decisions by enabling Real-Time Visibility into financial impact of a critical business service due to an unplanned outage or degradation of service .
- ↳ Continuity Patrol enables Business Services and IT Relationship mapping in real-time, and the cascading impact of any IT disruption on dependent business services.



### BIA and Real-time FIA



- ↳ The product uniquely enables "Live Business Impact Analysis" functionality that leverages the dependency definitions and cost data to calculate quantitative financial impacts using "What-If Analysis" that can be specific to a single production application, a set of production applications or the entire DataCenter.



## Auto Discovery of Application IT Infrastructure



Continuity Patrol auto discovers the entire application infrastructure involved within the datacenter. This module also helps in updating the CMDB with the relative information of the discovered components including Server, Storage and Network Device, and represent the same diagrammatically.



## Auto Discovery of Application Interdependency Mapping



Continuity Patrol auto discovers the application interdependencies in Real-time. It provides Real-time values in identifying the sequence in which the applications interact with each other and gives complete view of inbound/outbound interdependencies among different applications. This helps in depicting the cascading impact of disruption and affected applications.



## Virtualization Automation



- Integration with Hypervisor layer
- Automates various operations such as Power ON, OFF, thick and thin provisioning
- Consistency Checks
- Custom actions for virtual guest OS

## Network Automation



- SNMP based monitoring for network components
- Network device availability and health statistics
- Monitoring and automatic updates for the firewall policies
- Device firmware monitoring

## Application Aware Layer



- This feature helps recover the inter-dependent IT components of an application during an IT disruption at the site level/datacenter level.
- Gives complete and real-time view of inbound & out-bound inter-dependencies among different applications which are known to the "Application Aware Layer", for Continuity Patrol to take prompt decisions during IT recovery.

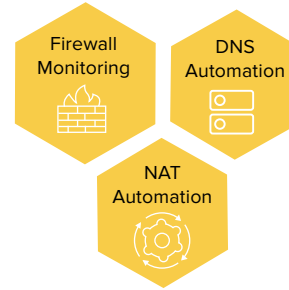
## Reports



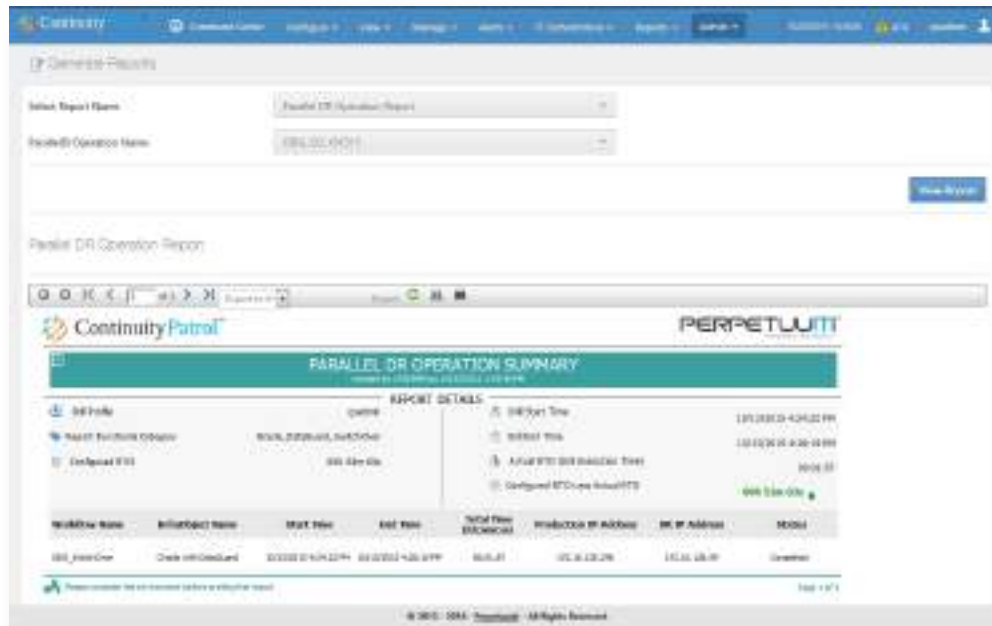
Following are some of out-of-the-box and customizable reporting templates integrated in Continuity Patrol:

- Reports for RPO/RTO, MTPOD, Data lag
- Switchover/Switchback and Failover/Failback
- Consistency Group (CG) formation report for storage based replication
- Application Summary

- InfraObject Configuration
- InfraObject Summary
- User Activity
- SLA







## Continuity Patrol Deployment Requirements

Continuity Patrol is developed on .Net platform and has the following Hardware and Software requirements for deployment:

### Hardware

- Intel Based Server (Physical/ Virtual) with Xeon Quad Core Processor
- 16 GB RAM (Minimum)
- 250 GB Hard drive

### Software

- Windows 2008 / 2012 Standard or Enterprise edition
- .Net Framework version 4.5
- MySQL / MSSQL / Oracle as Metadata database

## DataSync™ - Built-in File Replication Utility

### Features:



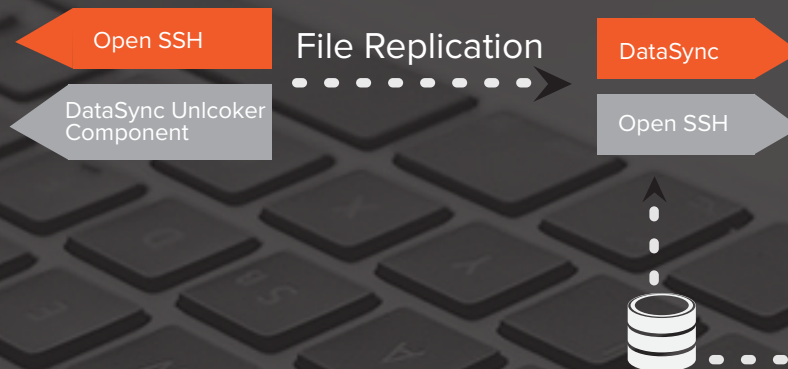
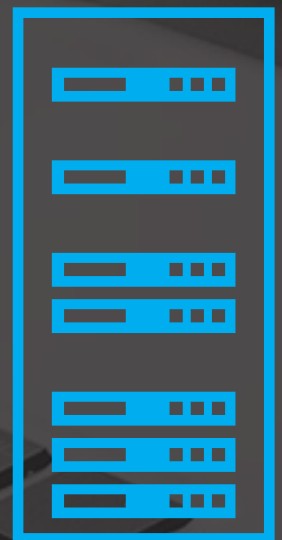
- ↳ Source and Destination equivalence
- ↳ Supports Unix symbolic links replication
- ↳ Replication from multiple sources to multiple destination files/folders and nested files/folders
- ↳ Maintains file attributes and option to skip or copy open files
- ↳ Replicates only changes made to the file
- ↳ Replication resumed from last successful replicated point
- ↳ Provide alerts when any change is made in file on production system
- ↳ On-the-fly compression for reduced bandwidth
- ↳ Extensive logging mechanism for replication activities

## Datasync Architecture

### Production



### DR



## Continuity Patrol enables your organization with:

- ↳ Real-time Visibility of entire IT environment including Business Service Availability Improved revenues through efficient Operations
- ↳ Assessing the impact of the Critical, Unplanned IT outage on business financially
- ↳ Unified CXO Dashboard with real time seamless information that empowers the stakeholders/ executives
- ↳ Automation of Business Services Continuity & Availability management
- ↳ Reduce Impact of IT Failure & Improve RTO/RPO for decision making and recovery
- ↳ Auto discovery of application infrastructure and application dependency
- ↳ Single-click switchover/switchback
- ↳ Orchestration for all technology layers
- ↳ Heterogeneous IT environments supported
- ↳ Mobile Ready offering
- ↳ Script-less and agent-less product
- ↳ Multi Tenancy
- ↳ Pay as you go Model
- ↳ Intelligently Automated Recovery Tests
- ↳ API Libraries
- ↳ Customizable Workflows
- ↳ Audit ready reports
- ↳ Network Automation
- ↳ Firewall Automation
- ↳ Supports Physical, Virtual and Cloud Platforms
- ↳ Remote Management and Role based User Access control
- ↳ HA capability for the management server
- ↳ SNMP traps for the integration with industry standard helpdesk/ Enterprise management solutions

### Supported Environment

#### Operating Systems

- Windows
- HP-UX
- Solaris
- RedHat Linux
- SUSE Linux
- Ubuntu
- CentOS
- IBM AIX
- Mainframe

#### Virtual Platforms

- Vmware
- Microsoft Hyper-V
- Xen

#### Databases

- Oracle
- MSSQL
- MySQL
- Sybase
- DB2
- PostGres SQL

#### Storage

- EMC
- Hitachi Data Systems
- HP
- Network Appliance
- IBM
- DELL



## Continuity Patrol enables your organization with:

- ↳ Integration with Business Continuity Management solutions
- ↳ Dynamic and UI based multi-format reports exportable to popular reporting engines
- ↳ Application centric Recovery Management with end-to-end automation capabilities
- ↳ Monitoring of firewall policies and automated updates
- ↳ Exception manager for initiating remedial action in response to alerts
- ↳ Central console for recovery management activities such as non-intrusive recovery drills for pre-flight checks, Switchover, Switchback, Failover and Failback; application start/ stop activities, etc
- ↳ Alerts on deviations in health parameters such as disk space, password changes, file addition/ deletion for prompt corrective actions
- ↳ Supports cross-platform DB replication and optimizes replication for Recovery and Production sites
- ↳ Application analytics to define inbound/ outbound dependencies
- ↳ Agentless monitoring of infrastructure health and custom application services
- ↳ Mitigation and drastic reduction in recovery operational risks at a favorable price point

### Supported Environment

#### Clusters

- Veritas Cluster Server
- HP MC/Service Guard
- IBM HA/ CMP
- Sun Cluster
- Microsoft Cluster Server
- Red Hat Cluster

#### Replication Integration

- EMC-TimeFinder, SRDF
- MirrorView, SnapView
- Network Appliance- SnapMirror, SnapShots, SnapVault
- Hitachi Data Systems – True Copy, ShadowImage, Universal Replicator, TrueShadow
- Oracle – DataGuard
- IBM – Global Mirror
- HP Remote Copy
- MSSQL Native Log shipping
- DB2 HADR
- VMWare SRM
- SAP HANA

**TO REQUEST A LIVE DEMO OR FOR ADDITIONAL INFORMATION ON CONTINUITY PATROL™, PLEASE GET IN TOUCH WITH OUR AUTOMATION EXPERTS:**

✉ [mktg@ptechnosoft.com](mailto:mktg@ptechnosoft.com)

☎ +91 20 6687 8300

🌐 [www.ptechnosoft.com](http://www.ptechnosoft.com)

#### About Perpetuuti

Perpetuuti empowers people and businesses alike. We deliver the world's most-comprehensive and urbane automation platforms making work more human. Our platforms deliver leading-edge automation solutions for modernizing resiliency management, and turbocharging the performance of your applications, IT and business operations at speed and scale to drive exponential efficiencies.

For more information, visit [www.ptechnosoft.com](http://www.ptechnosoft.com)