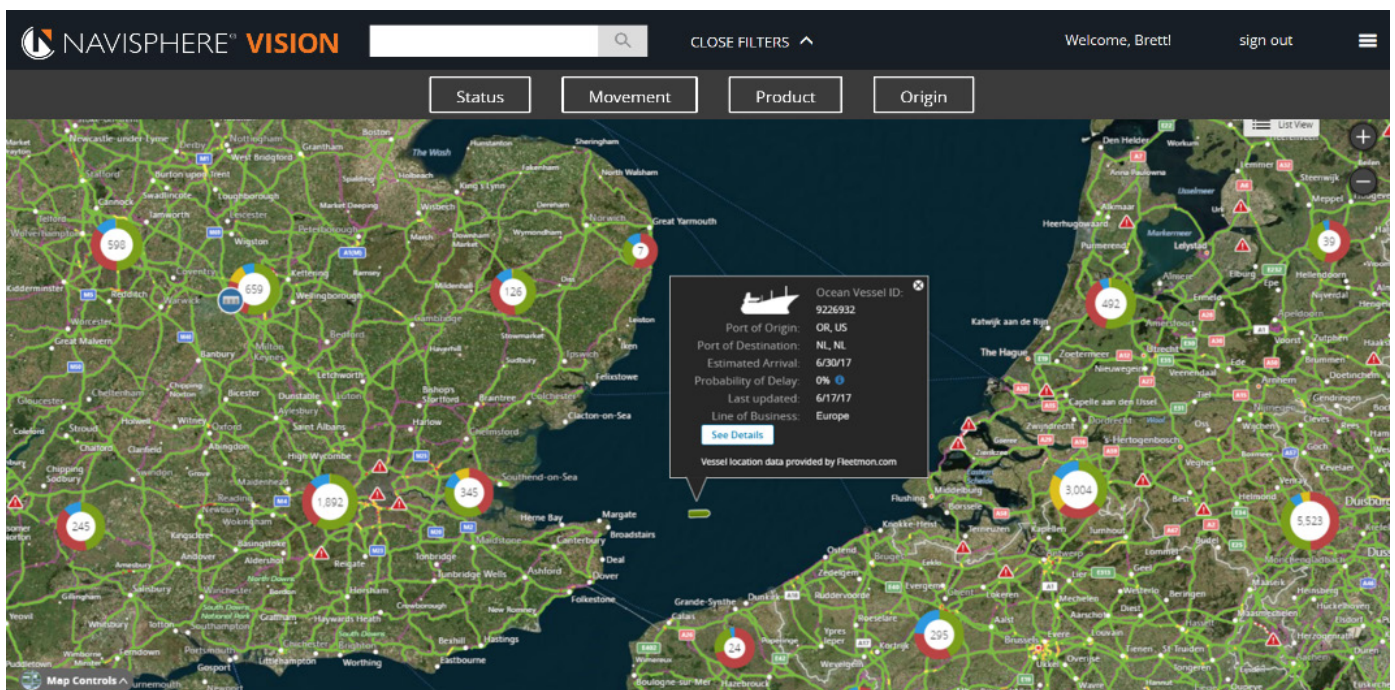


## Proactively avoid costly supply chain disruptions on a global scale

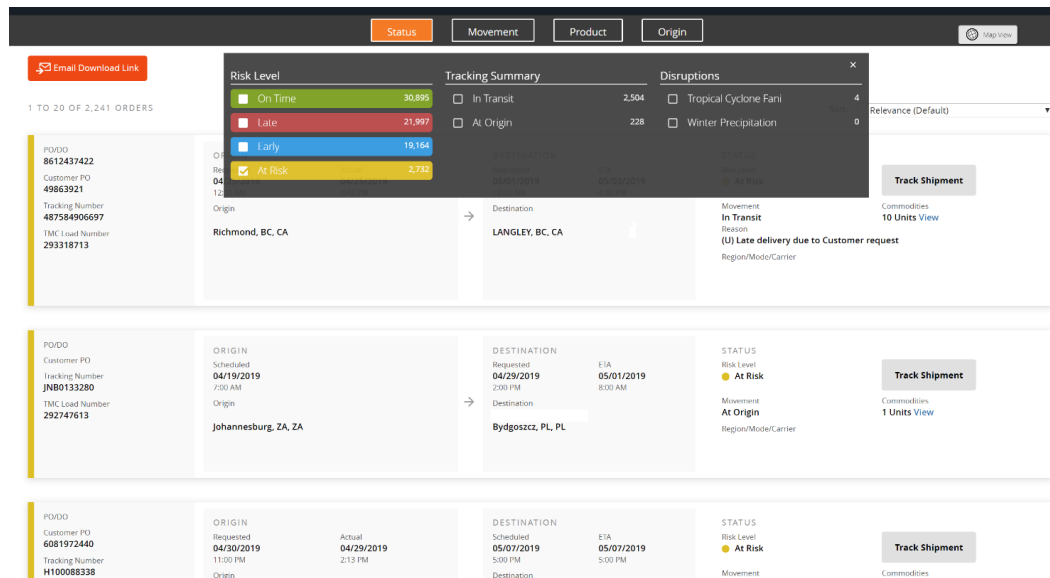
Real-time visibility and comprehensive connectivity to your global supply chain is possible with C.H. Robinson's Navisphere® Vision. Leverage a single platform that offers predictive analytics, artificial intelligence (AI), and visibility to your entire supply chain. The unique information advantage Navisphere Vision provides can help you make informed decisions that ensure products reach their destination—and customers—on time.

Navisphere Vision is a licensed software as a service (SaaS) platform. Total costs are based on an annual licensing fee and total shipment volume. The implementation timeframe varies, as several factors—such as resource availability, the level of configuration requested, and more—impact the process.

**Get a detailed view of your global shipments in real time.** Navisphere Vision provides to the order-level details and status updates of ocean vessels, airplanes, trucks, or trains anywhere in the world.



**Focus your attention on your highest priorities.** With active shipment filtering, you can proactively track, monitor, and react to disruptions.



	Feature	Benefit
See more	Global shipment status map	Real time visibility for all modes, in all regions around the world.
	Detail shipment list view	Proactively track, monitor, and react to disruptions before they occur through predictive analysis and disruption modeling.
	Integration of external disruption factors: weather, traffic, current events	Drive savings by decreasing safety stock through visibility to inventory in motion and at rest.
Know more	Alert notifications	Be the first to know about shipment status updates, delay notifications or disruptions so you can improve service to your customers.
	Role based security and customized views	Allow customers access to view their shipments.
	Data quality and carrier scorecards	Drive data accuracy and compliance with your supply chain partners to improve performance and visibility.
Do more	Executive data visualization dashboard	See your global supply chain via an executive view that provides key statistics and a summarized insights.
	Active shipment filtering	Reduce distractions and focus your attention on the highest priorities.
	In app messaging	Improve collaboration and communication with your internal team and customers.
	Track high value shipments and know their commodity value	Manage customer expectations through the shipment lifecycle