



PetroVisor Overview

by **DATAGRATION**

MAY 2021



Proven History of Development & Execution

Deployment of first automated enterprise solution (workover candidate selection) performed on the PetroVisor™ platform.

2014

Started building ecosystem of partnerships & technology vendors. Established partnerships with Microsoft & Siemens

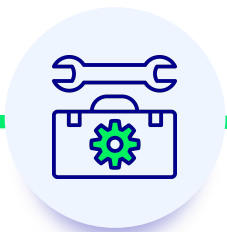
2019

Datagration acquires Mosaic Petroleum Analytics to enhance unconventional resource workflows

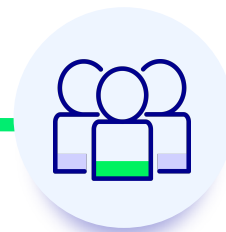
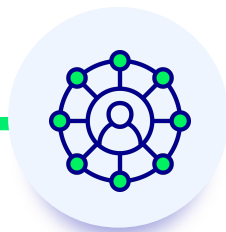
TODAY



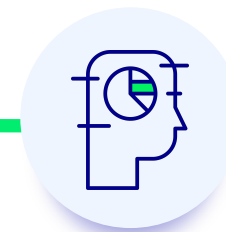
2010



2017



2020



Completed Portfolio Management, Asset Development & Well Enhancement solutions.

Houston, Texas - myr:conn solutions & the PetroVisor platform acquired by Datagration. Investment led by Quantum Energy Partners & Global Reserve Group



Technology That You Can Trust



260+

Fields on the PetroVisor™ platform today

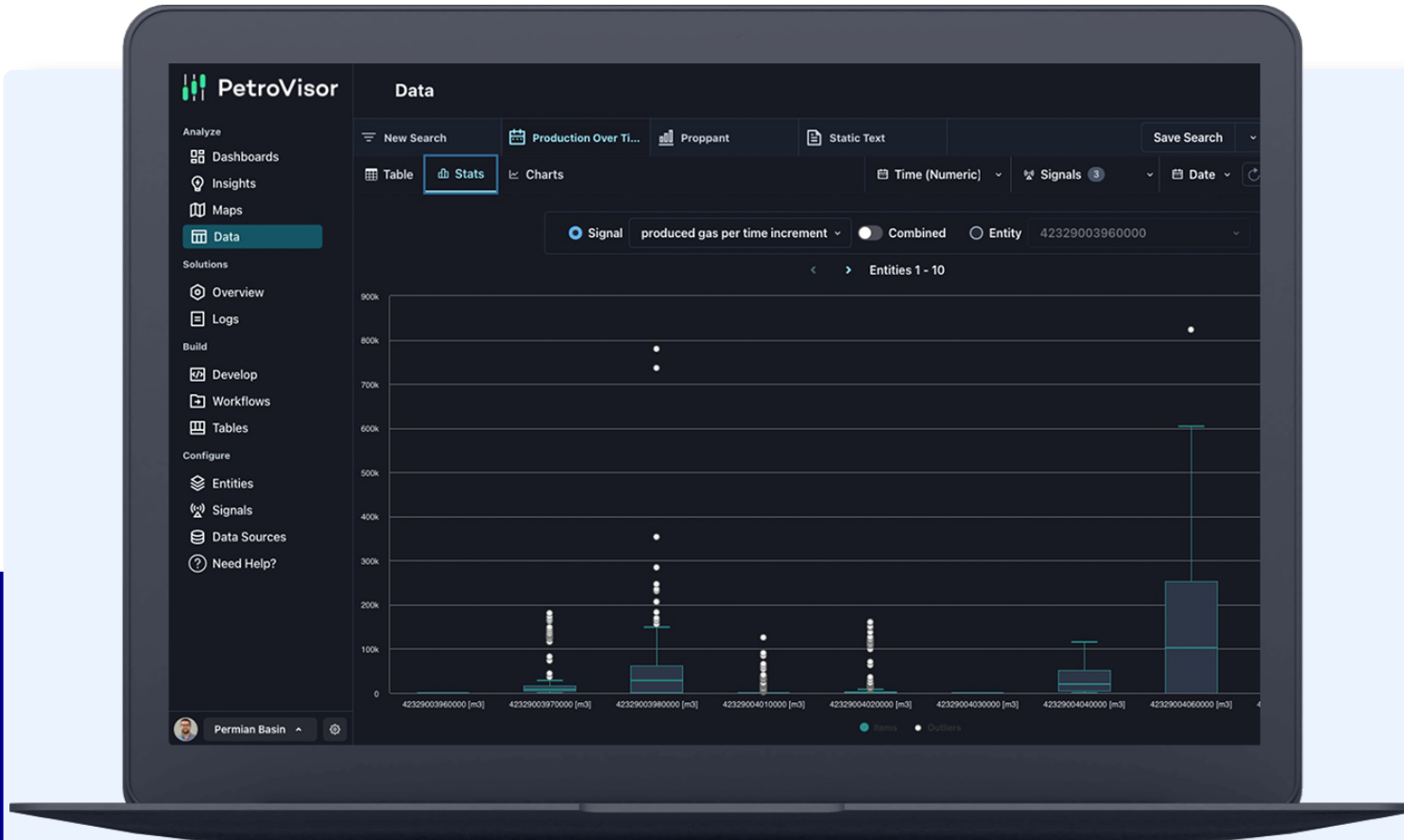
20,000+

Wells evaluated for new opportunities

50+

Automated engineering workflows available in PetroVisor™

Increasing Efficiency & Productivity



Increase Manpower Efficiencies

Reduce the cost by

80-90%

Of typical technology maintenance and expansion

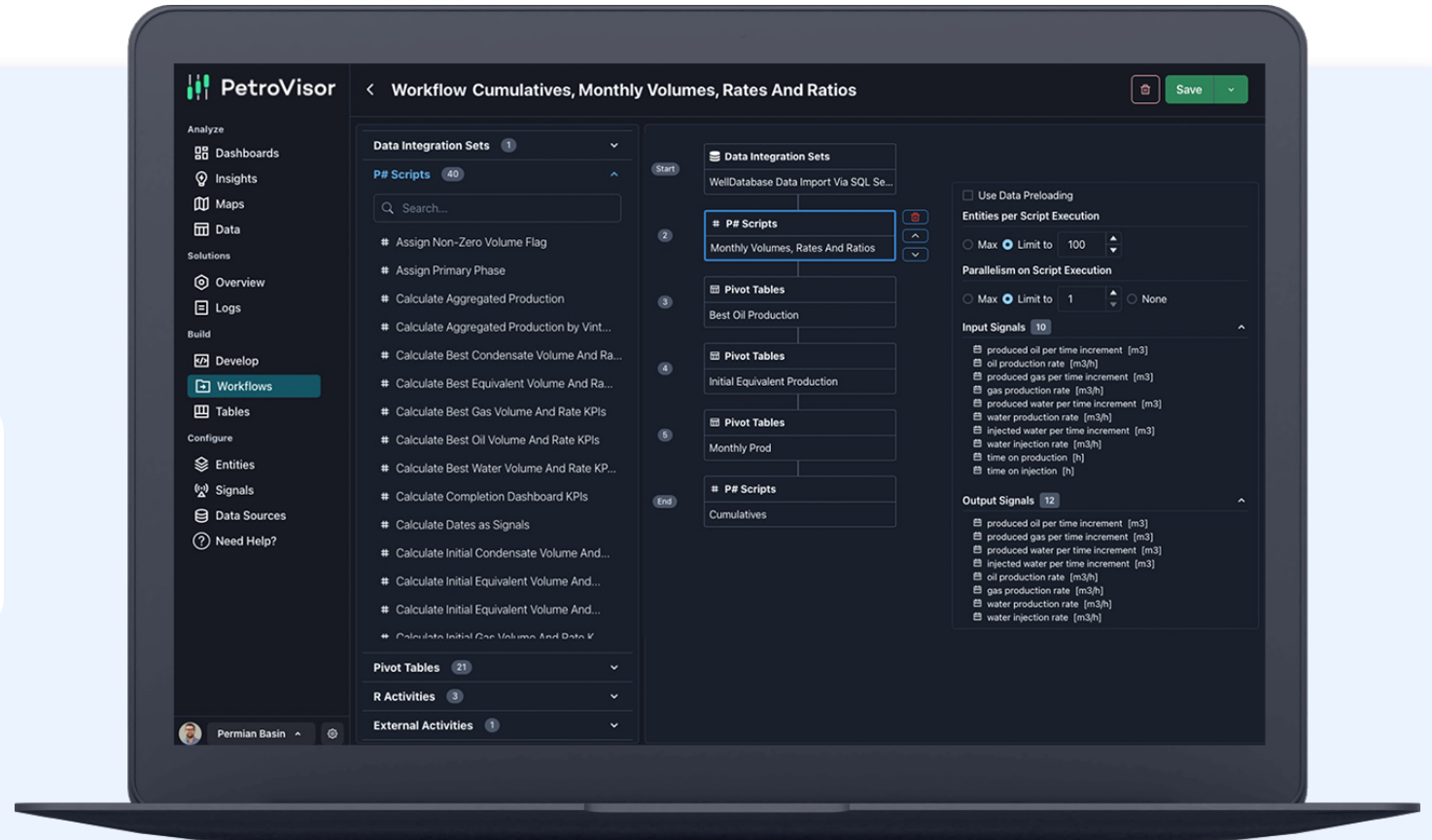
Decreasing Costs & Improving Data Utilization

Reduce Data Management Costs
While Increasing Data Utilization

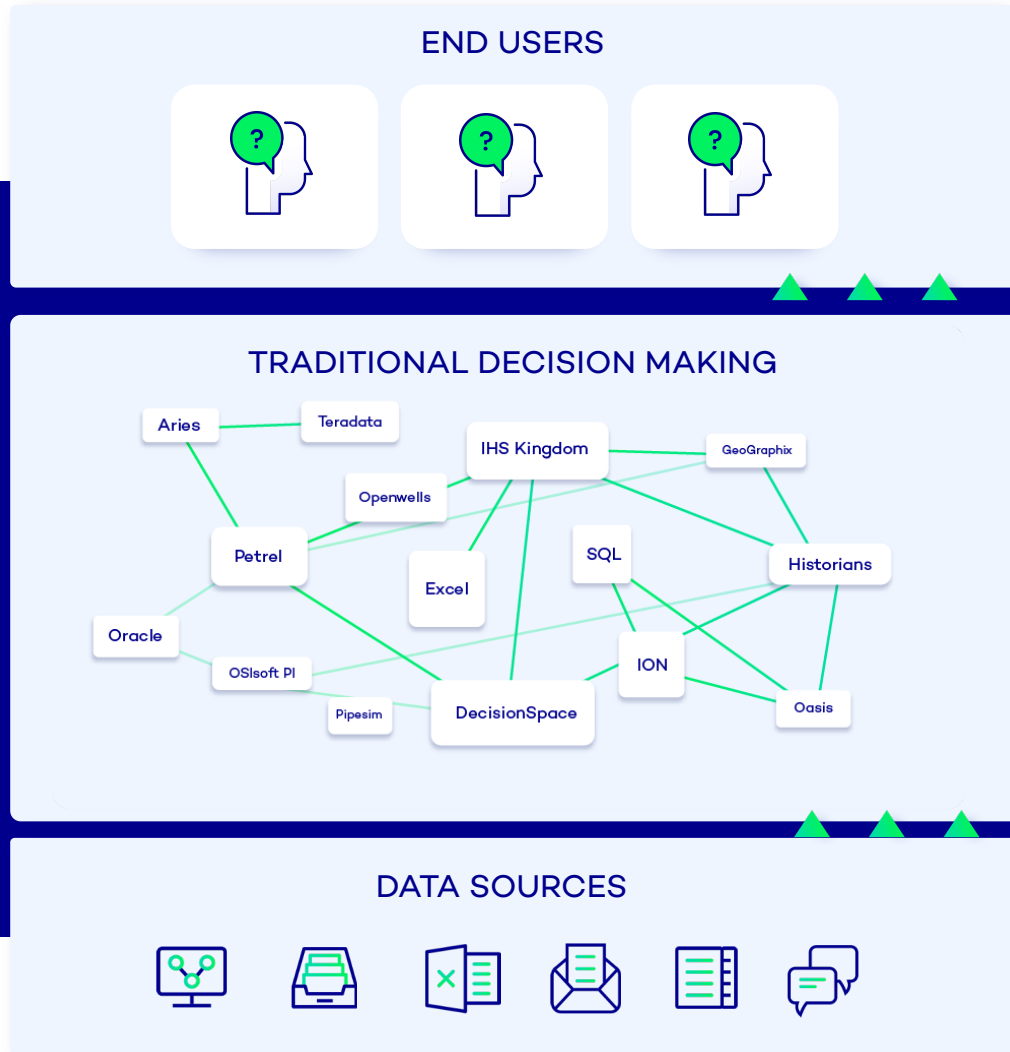
Typical project implementation of

**8 Weeks instead
of 6 Months**

Reducing the industry norm and
saving hundreds thousands of dollars



Current Industry Approach Is Complex and Costly

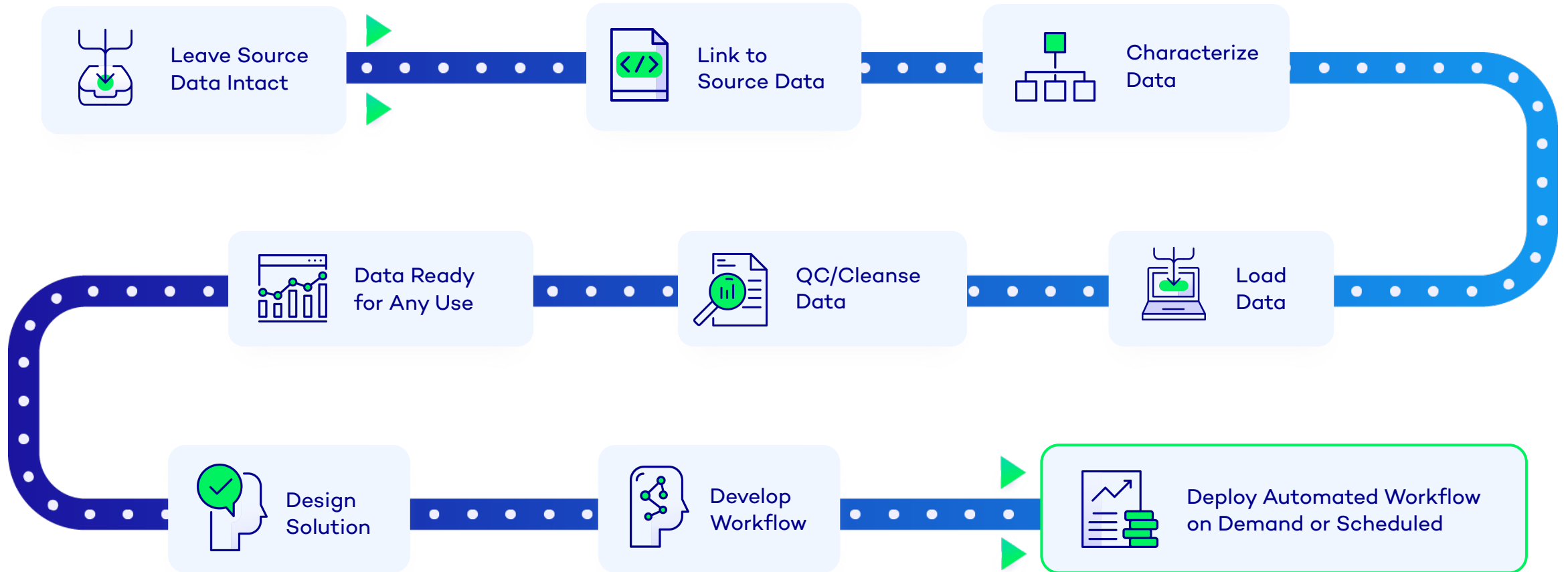


Resource intensive, slow to deploy, limits scalability

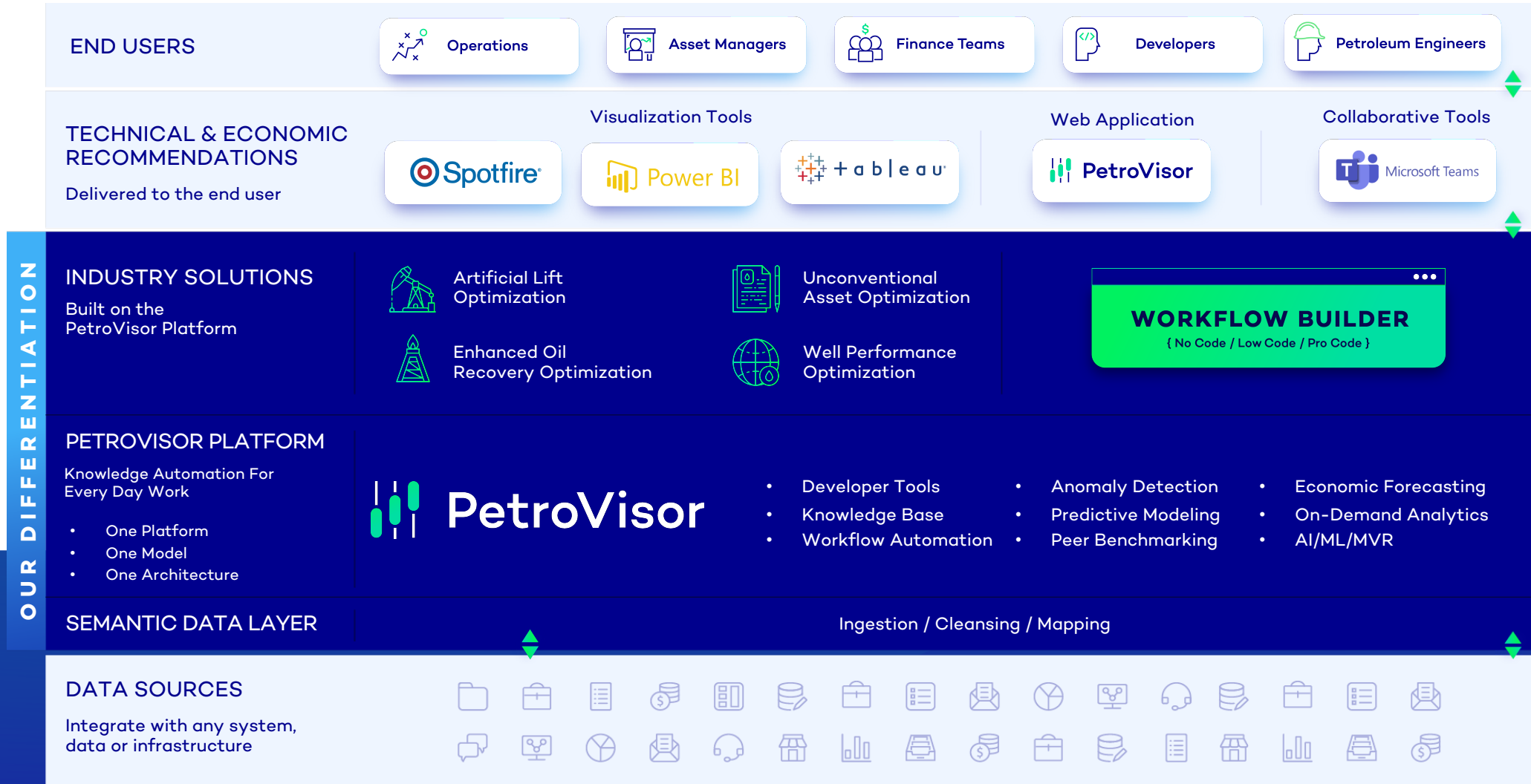
- High Operating Costs
- Technology Unable to Scale Beyond Single Use
- Disparate Data Remains Siloed
- Knowledge Capture Becomes Increasingly Complex
- Manually Engineered Connections Expensive to Maintain

PetroVisor Approach is Simple and Efficient

Unified data model for the automated flow of data and knowledge for better decision making



PetroVisor Platform Architecture



Platform Extensibility

We can connect to any data sources with an accessible API or any outputs

Data Sources We Connect To:

- SQL
- Oracle
- Teradata
- ODBC
- Historian
- Web APIs
- Spreadsheets, MS Excel
- ASCII Files
- SHP Files
- 3rd Party APIs
- Manual Data Entry
- Avocet, Azure Warehouse
- OpenWells, EDM, Energy Components
- Access DBs, OFM
- OSIsoft PI, Conduit
- Odata, RESTful API
- TIBCO Spotfire, Tableau
- CVS, LAS, CPS-3, Zmap
- Petrel, Petra, Kingdom, DecisionSpace, GeoGraphix
- Eclipse, CMG
- Propser, GAP, Pipesim
- Aries, PhDWIn, ValNav
- SAP, Quorum
- Enverus, WellDB, IHS, Drilling Info, FracFocus, Oseberg
- FracPro, StimPlan
- Peloton, P2 Solutions
- And More...

Technology We Use:

- Kubernetes
- Docker
- R
- MSFT Azure ML
- MSFT ML.Net
- MSFT Sharepoint
- MSFT SQL
- MSFT PowerApps/Flow
- PetroVisor P# DSL
- MSFT Graph
- Azure IoT Hub
- Azure Stream Analytics
- Azure Data Lake Analytics
- Azure SQL
- Redis
- C#
- Typescript
- NodeJS
- .NET / .NET core
- PetroVisor Web API
- AWS RDS
- AWS S3
- AWS Kubernetes
- React
- Serverless Functions
- And More...

Scripts & Technology Components:

- Voronoi Grid
- Auto DCA
- Material Balance
- Data Cleansing
- Feature Extraction
- ESP Well & Pump Model
- Gas lift Well Model
- Rod Pump Model
- Bayesian Networks
- Knowledge Graph
- Cross Plot
- Ticketing System
- Feedback Loop
- Workflow Schedule
- Workflow Automation
- Petrel Maps Integration
- Eclipse Maps Integration
- PETEX Model Integration
- ML & AL
- Chart Builder
- Web-based Visualization
- P# IDE



Delivering Full Field Visibility

Activating organizational transformation on a single, unified platform.



Artificial Lift Optimization

- Rod Lift Optimization
- Gas Lift Optimization
- ESP Optimization



Well Performance Optimization

- Intervention & Workover
- New Candidate – Behind Casing
- New Candidate – Infill
- New Candidate – Sidetrack
- Constraint Management



Enhanced Oil Recovery Optimization

- SAGD Optimization
- Cyclic Steam Optimization
- Continuous Steam Optimization
- Surfactant Optimization
- Waterflooding Optimization



Unconventional Asset Optimization

- Project Scoping
- Completion Optimization
- Development Optimization
- Acquisition Analysis
- Uncertainty Analysis on Investor Returns



ESG Optimization

- Carbon Footprint & Neutrality Analysis
- Energy Usage Metrics
- GHG Emissions Forecasting
- Hydrocarbon Intensity Index
- Social Score Indexing
- LTIR Reporting & Analysis



Have Any Questions?





Thank you.

