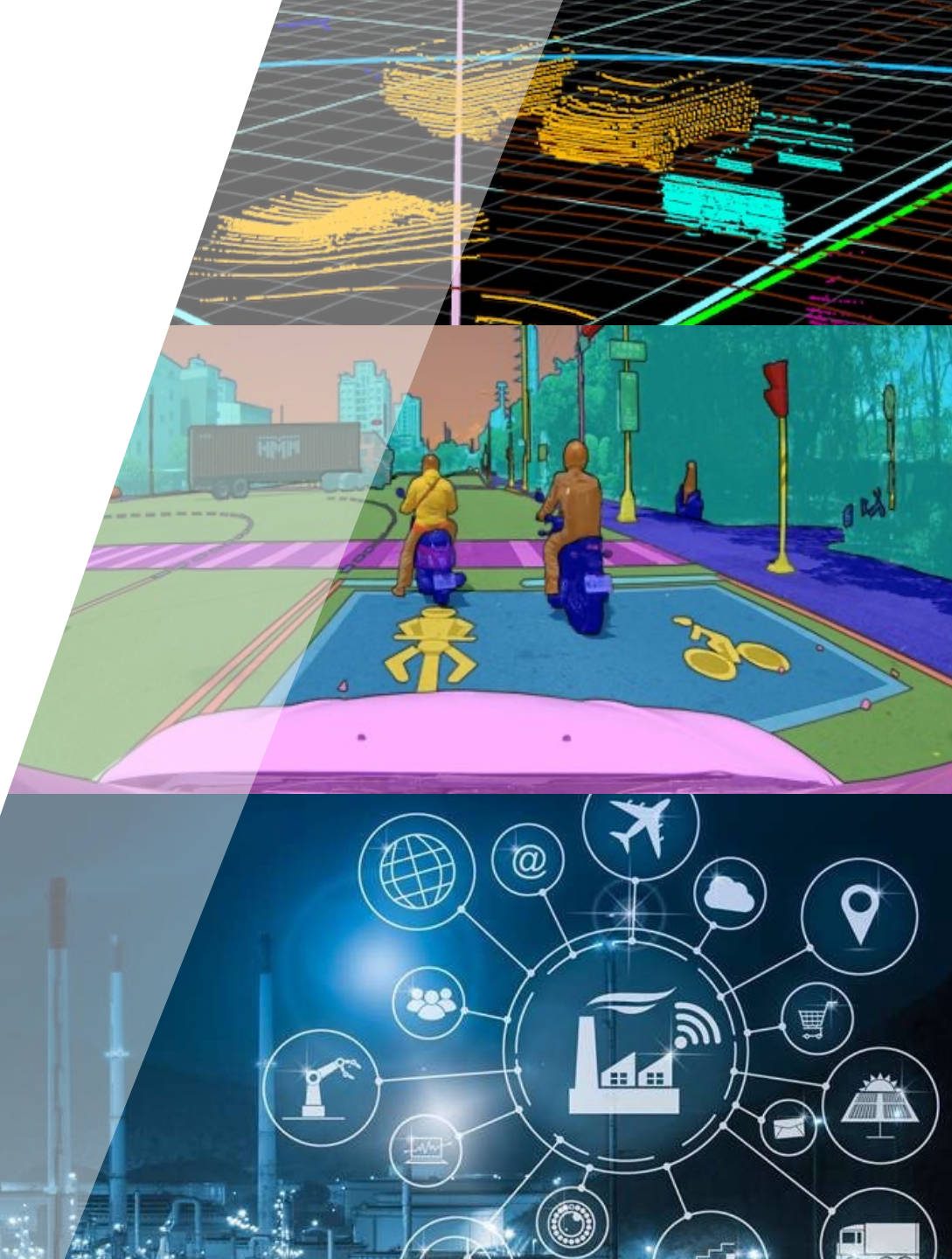


# Linker Vision



Linker Vision

*Data-Centric  
Continuous Learning AI Platform*



# Linker Profile

## Background

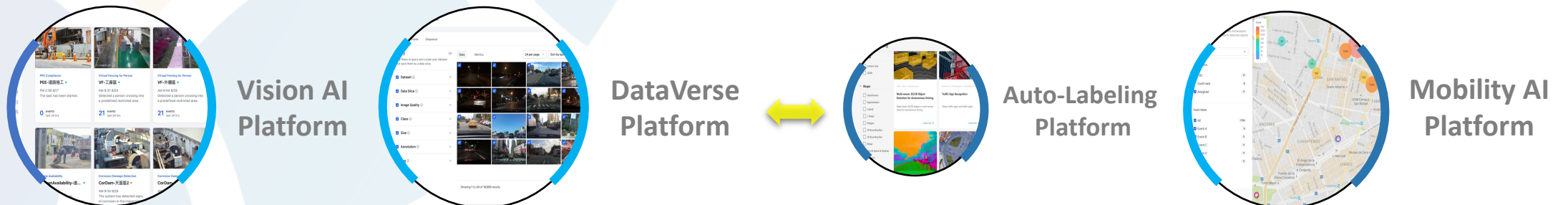
- Linker Founder and CEO, **Dr. Paul Shieh**  
Founding member of Starent Networks, acquired by Cisco in 2009
- Linker was founded in Boston in 2013
- Linker Vision, a new entity founded in Taipei in 2021

## Linker Solutions

- ✓ Vision Based Deep Learning Technology
- ✓ Production Grade Machine Learning Platform for Autonomy
- ✓ Business and Technology Digital Transformation
  - Offer End to End AI Solutions
  - Accelerate the development of AI from data labeling to connected Intelligence

## Core Business

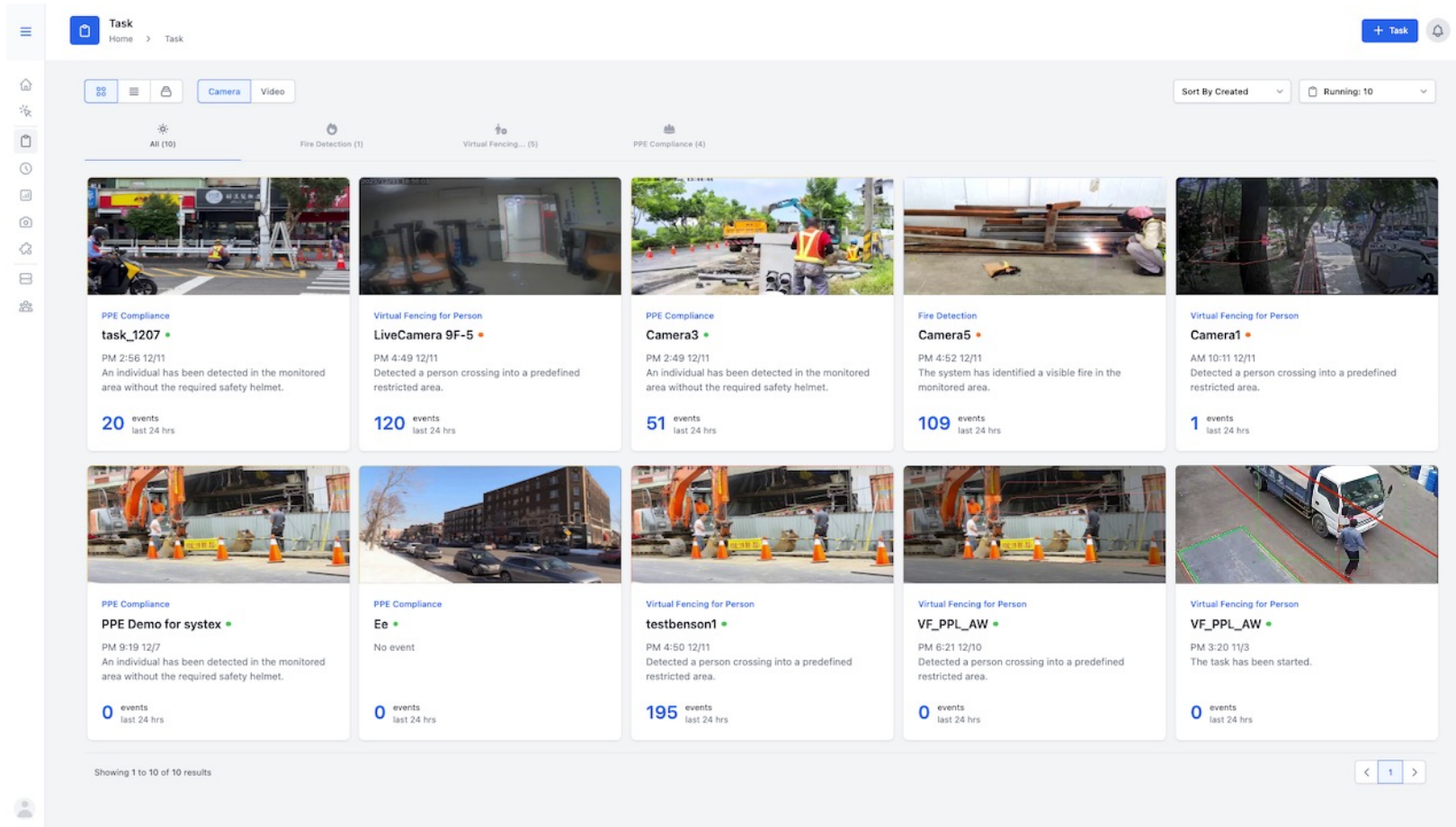
### Data-Centric Continuous Learning Platforms Built-In Large Vision Model (LVM)





# Observ *Edge-enabled Real-time Analytics*

**Safety & Security Monitoring, Instant Alert – All-in-One**



***Work with any existing camera, watch out every corner 24/7***

## Versatile AI Tasks

- Various scenes and detection
- Stream and location setting

## Configurable Threshold

- Avoid noise w/t interest range
- Configure event threshold

## Events Record History

- Query event record by type
- Query event record by time

## Customizable Mobile Push

- Realtime mobile/web alert
- Customizable push scope

## Event Trends and Stats

- Event counting
- Filter by date, location, type

## Continuous Learning

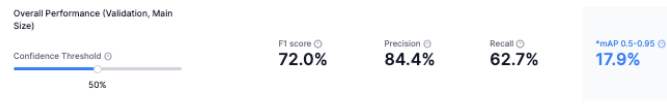
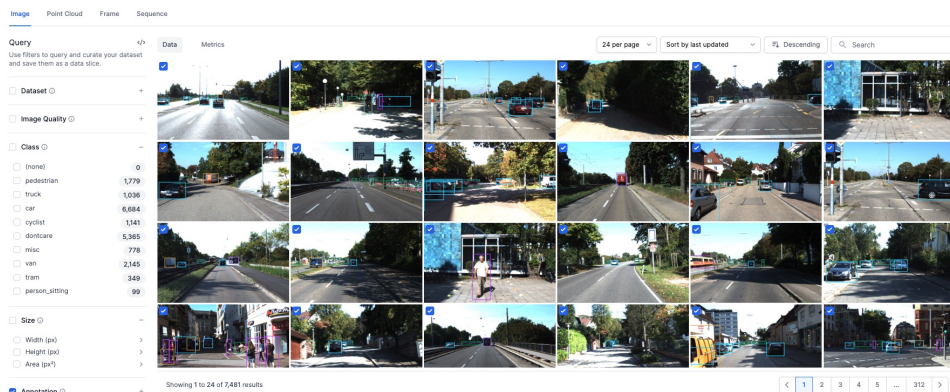
- Integrated drift collection
- Automated learning process





# DataVerse *Large Vision Model to Build AI Faster*

*2D+3D automated curation facilitates 10x faster data-centric model development*



F1 Score / Confidence Threshold: Class: All, Object Size: Main, Data Slice: ob711\_validation



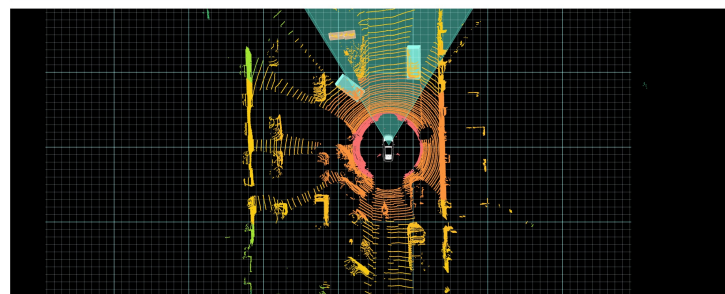
Performance / Class: Confidence Threshold: 50%, Object Size: Main, Data Slice: ob711\_validation



CLASS	F1 SCORE %	PRECISION %	RECALL %	mAP 0.5-0.95
All	72%	84%	63%	18%

CLASS	F1 SCORE % F1	PRECISION %	RECALL %	mAP 0.5-0.95
car	77%	87%	69%	43%
traffic_sign	69%	78%	62%	39%
traffic_light	66%	79%	56%	27%
person	65%	82%	54%	25%

00000006927 - Frame 00000000000



Sensor: camera1, lidar1

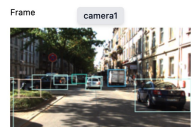
Class: Car, DontCare, Misc, Van

Annotation: Ground Truth

Point Cloud Color Mode: Color Distance

Cuboid Color Mode: Class

Dot Size: [Slider]



*Continuous learning to quickly adapt to unseen scenes*

## Auto Scene Generation

- Auto generate scene indices
- Production grade scene models

## High-impact Sampling

- Visualized data curation
- Diversity sampling toolset

## Structured Query

- Combine query logic freely
- Ensure mutual exclusive

## 3D+2D Sensor Fusion

- 3D point cloud exploration
- Multi-sensor FOV mapping

## Model Diagnosis

- Auto drift data collection
- Visualized training progress

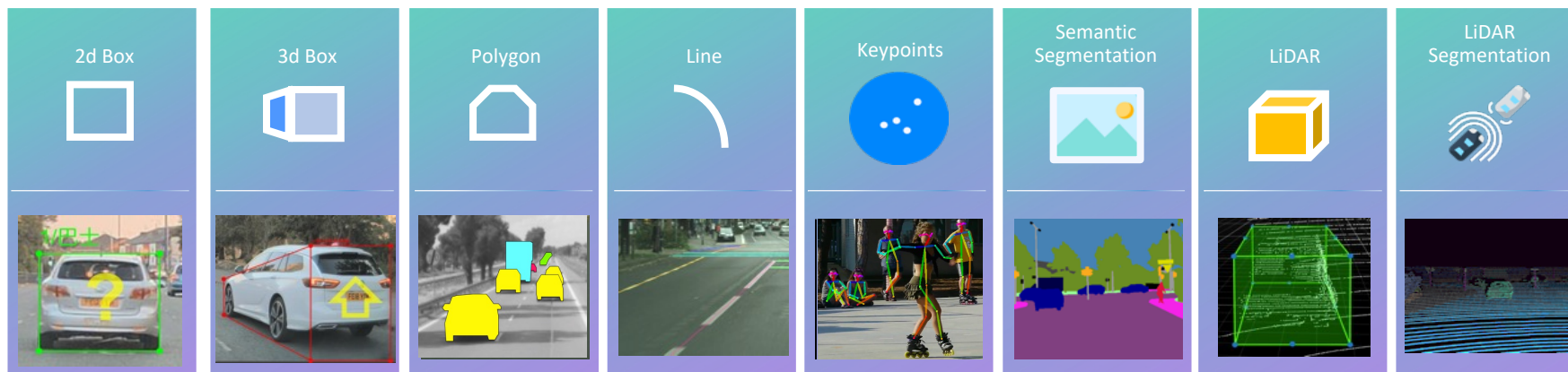
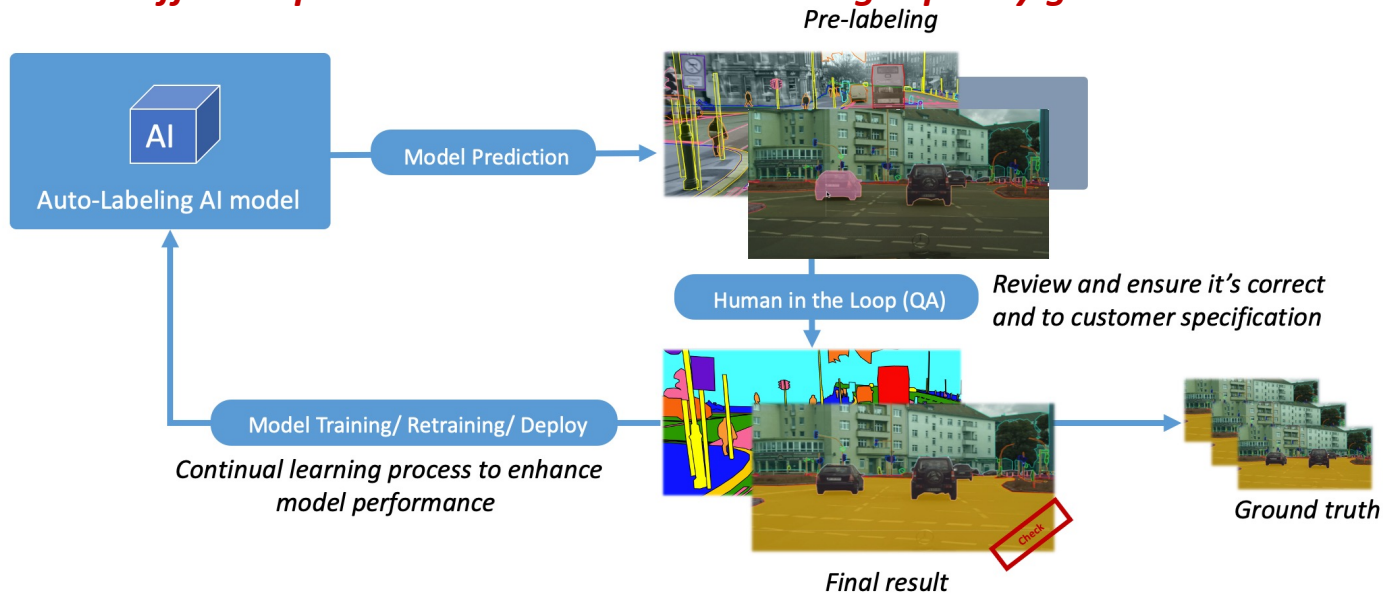
## Model Iteration

- One click to train, w/o coding
- Better Collaboration



# Auto-Labeling *High Accuracy 3D/2D Annotations*

*Minimum effort to produce massive reliable and high-quality ground truth*



**Full and Complete Labeling Support in 3D, 2D, Semantic Segmentation, and more**

## High ROI in Labeling

- Less data needed to build stronger model
- Eliminate cost on owning labelers

## Professional Quality Check

- Meet high accuracy requirement
- Optimize the synergy of model and labeler

## All Specs Support

- 3D 、 2D 、 Semantic segmentation
- Complex attributes
- Difficult labeling objects

## Production Level Service

- Structured labeler training system
- Agile to expand in based on actual needs

## Stable Speed-Value Production

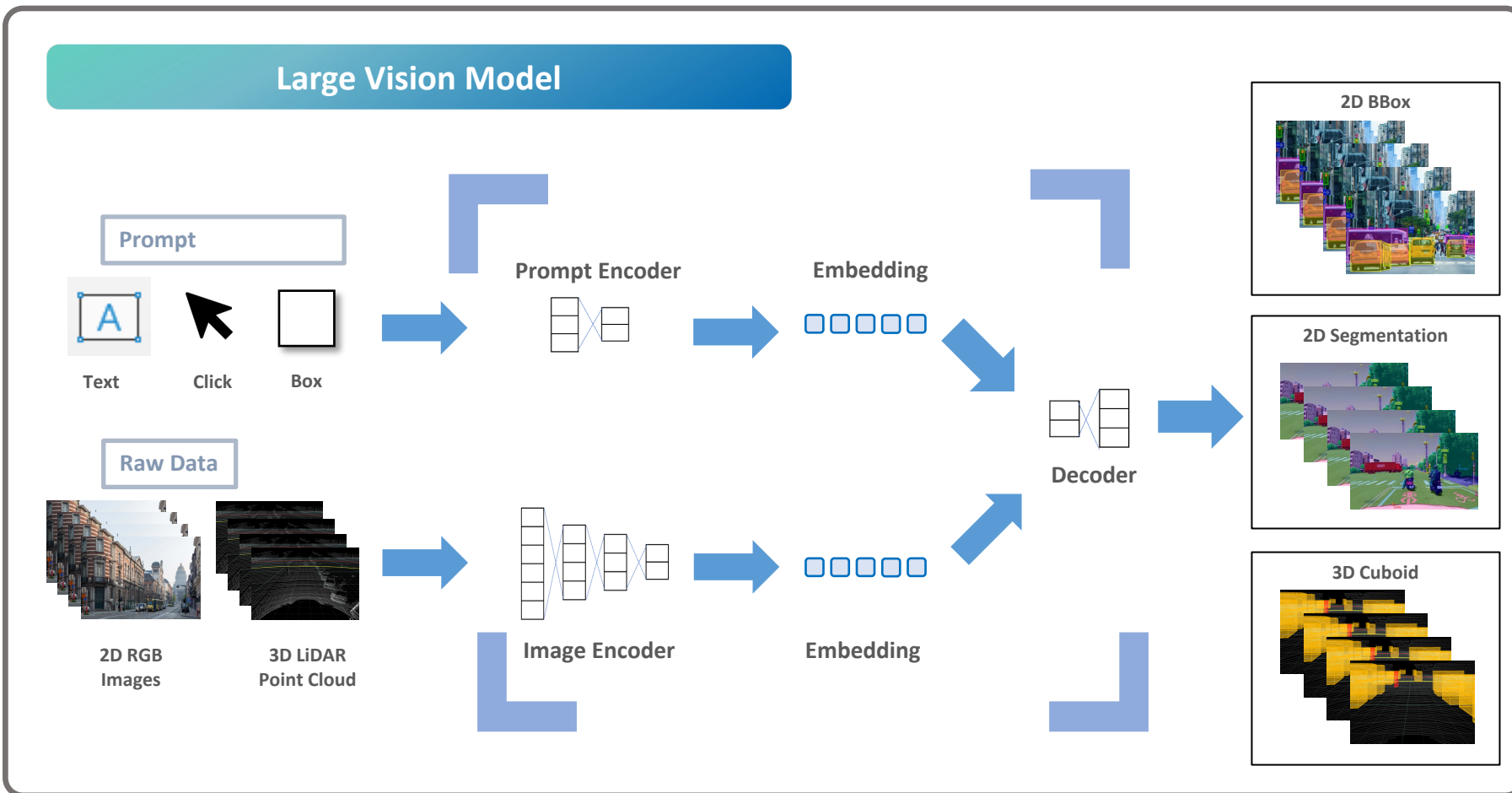
- Reduce 70% of time
- Experienced Professional QA and optimized process flow for strong quality consistency

## Continuous Improvement

- Accumulated quality advancement
- High price-value performance in large quantity



# Core Technology- Large Vision Model







# *Computing the future of AI*

*The most effective partner to accelerate your AI continuous learning deployment*

## **Get in Touch**

[support@linkervision.com](mailto:support@linkervision.com)

<https://www.linkervision.com/>