



A Women Owned/Women Led Company

Microsoft 365: Merger and Acquisition (M&A) and Migration Implementation



Infrastructure Azure
Data & AI Azure
Digital & App Innovation Azure
Modern Work
Security

The Problem

The process of going through a merger, acquisition, divestiture, or even a rebranding is a complicated undertaking that involves every facet of an organization to make sure that it can happen in a timely fashion with minimum impact to the business. Ensuring that the data and users are migrated securely and in a fashion that allows for compliance requirements to be met is critical. As organizations undertake this challenge, the issues often revolve around how to:

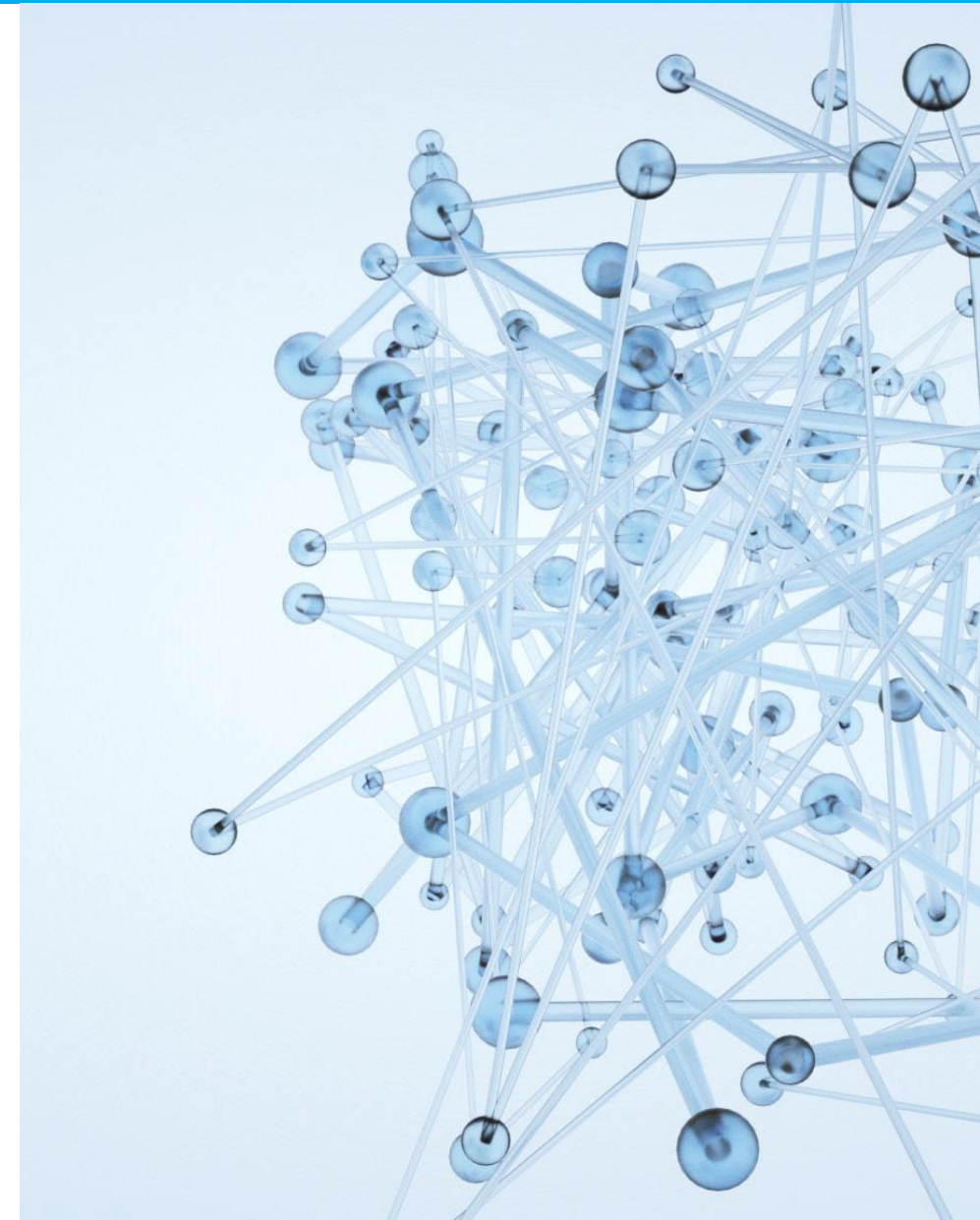
- Know what is being shared and by whom.
- How do you address external sharing/
- How to make sure that emails, chats, and other communications are not lost/
- Making sure items like DLP, Retention, and eDiscovery are accounted for.
- Keeping sensitive data protected while migrating it.
- Ensuring that if users are moving to another tenant that sharing (internal and external), identity protection, and applications are going to work as identities change.



The Solution

Spyglass's **Microsoft 365 Mergers and Acquisitions (M&A) Implementation Engagement** focuses on quickly being able to move data to its desired destination across Microsoft 365/Azure solutions and potentially 3rd party solutions. All the data and users affected by the migration activities are handled with Security and Compliance in mind to make sure that the destination meets or exceeds the required controls and requirements. The M&A migration implementation will focus on the following key components:

- **Data Discovery that includes but is not limited to:**
 - E-mail
 - Cloud file storage (OneDrive, Teams, and potentially 3rd Party solutions)
 - Sites (SharePoint)
 - Chats (Teams and potentially 3rd party solutions)
 - On-premise file storage
- **Security Assessment of both source and destination including but not limited to:**
 - Data Governance (Data Loss Prevention, Sensitivity Labels, Retention Policies/Labels, eDiscovery, etc.)
 - Sharing Internally/Externally
 - Auditing/Logging
 - Permissions Management
 - Identity Protection
 - Tenant Hardening
 - Solution Hardening
- **Migration of the data to the destination tenant in a staged manner.**
- **Testing and Validation for data and users' information.**
- **Training (End user and Administration) as necessary**





Thank You

info@spyglassmtg.com