



# ODBC for Azure Synapse Analytics

Empower your data analytics with ODBC for Azure Synapse Analytics. Seamlessly connect and query data in your Synapse Analytics environment, unleashing the power of efficient and secure data access. Our solution facilitates seamless integration, enabling you to harness the full potential of Synapse Analytics.

# Key Features

**Direct Connection**

Database applications based on our solution get an opportunity to establish connection to AzureSynapseAnalytics directly via TCP/IP. That improves performance of your applications, their quality, reliability and especially the deployment process, since there is no need to supply additional client software together with your application.

✓ ODBC API

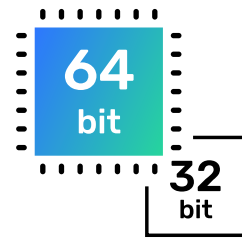
✓ ODBC Data Types

## ODBC Conformance

Our ODBC driver provides full support for common ODBC interface:

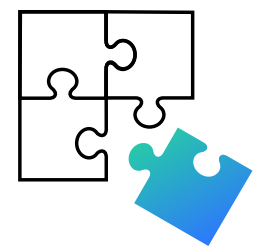
- ODBC Data Types support
- ODBC API Functions support

In addition, we provide support for Advanced Connection String parameters. Thus allowing any desktop and web applications to connect to AzureSynapseAnalytics from various environments and platforms, that support ODBC.



## Development Platforms Variety

ODBC Driver for Azure Synapse Analytics doesn't limit your choice of the development platform and environment. The driver installations are available for various operational systems and platforms. The current version supports Windows, macOS, Linux, both 32-bit and 64-bit. So you can develop both 32-bit and 64-bit cross-platform applications.



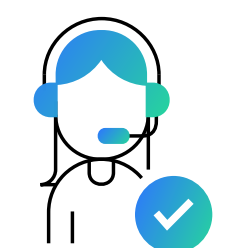
## Database Compatibility

ODBC Driver for Azure Synapse Analytics supports Azure Synapse Analytics cloud databases.



## High Performance

All our products are designed to help you write high-performance, lightweight data access layers, therefore they use advanced data access algorithms and techniques of optimization.



## Support

Visit our [Support](#) page to get instant help from knowledgeable and experienced professionals, a quick resolution of your problems, and nightly builds with hotfixes.