

# CREATE CLARITY THROUGH DATA VISUALIZATION

*Jump start your ability to make sense of all the data.*

Do your employees have access to an easy-to-use, ubiquitous tool that helps them visualize data and supports their ability to make quick, insightful decisions?

There is no need to rely on your small group of Business Intelligence (BI) specialists to answer the questions that will make your business thrive. Through Covenant's **Power BI Jump Start** you can enable anyone in your organization with their own data discovery and ad-hoc analysis – all your employees can be the experts!

## IMPROVED BUSINESS DECISIONS

Make better decisions and enhance productivity by combining data from different data sources and sets.

## REAL-TIME INTERACTION

Gain real-time insights and the ability to ask questions of the data in natural language with an immediate response.

## FAMILIAR INTERFACE

Enable users to work independently and collaboratively using tools they already know.

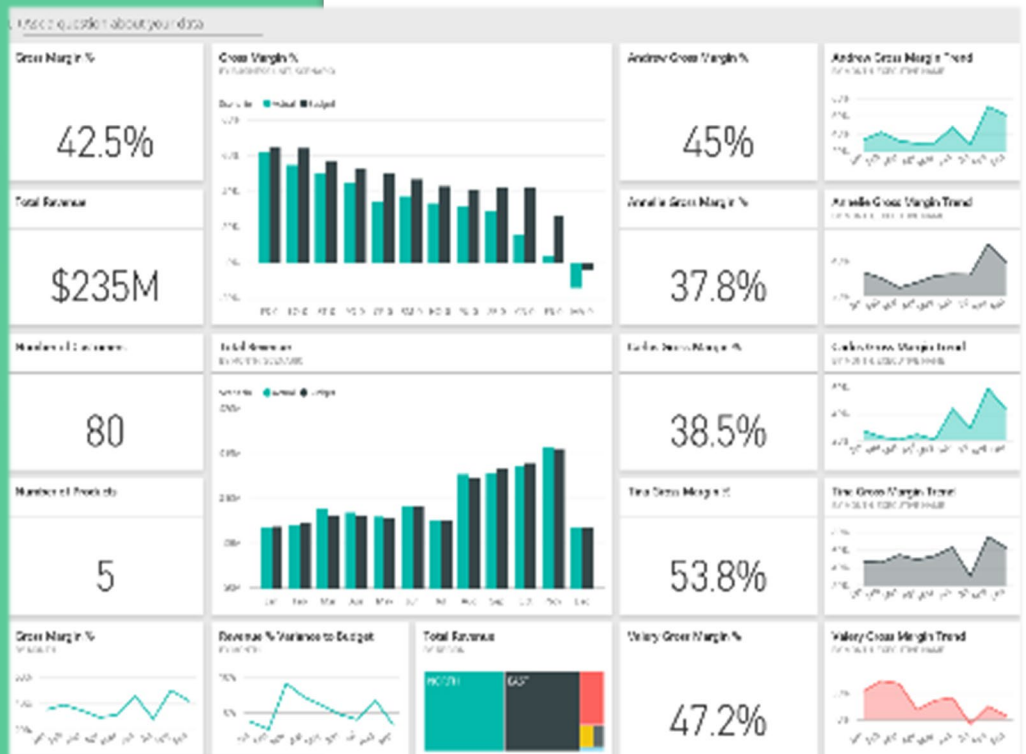
## ENRICHED DATA VIEWING

Interact with data in new ways through visualization.

## MOBILE FRIENDLY FOCUS

Access dashboards from mobile devices across different platforms, both in online and offline modes.

Gold  
Microsoft Partner  
Data Analytics



## OPEN THE DOOR TO SMARTER BUSINESS DECISIONS

- **SALES ACTIVITY INSIGHTS BY REGION**  
Relevant, up-to-date information on sales activities with a geospatial overlay to provide more insights.
- **INVENTORY UPDATES**  
Access to product inventory information provided through graphical visualization reports and charts.
- **CUSTOMER INTERACTION REPORTS**  
A convenient dashboard to highlight the recent customer support engagements and outcomes.



Wherever you are in your journey to optimize your data visualization experience, we will work with you to develop the right solution for your business by using a highly collaborative, consultative approach that has proven successful in organizations around the world.

## POWER BI JUMP START PROJECT

### 1. **Format:**

Three (3) week engagement with Microsoft Services that implements Power BI to show impactful data visualizations with linkages to different data sources. Get interactive dashboards and stunning visualizations all based on your own data.

### 2. **Objectives:**

The project will provide the architectural design for a specific use case, custom development of Power BI components, and plans for the development and deployment of the final solution. (Project team: BI Architect, Engagement Manager, Associate Consultant)

