

Collective Insights combines architecture, engineering, and change management expertise to increase adoption and consumption of Microsoft Security and Microsoft 365 E5 across an enterprise.





Born in 2015

Founded in Atlanta with a focus on business & technology consulting

Trusted to execute enterprise transformation in 2016 and 2017

Big Firm

We collectively have over 500 years of experience at firms like Booz Allen Hamilton, Capgemini, North Highland, Slalom, Deloitte, Accenture, KPMG, EY and more



Deepened Experience & Skills in 2019

Solution Center opens in 2019 to deepen technology services

Client footprint grows in 2020 and 2021 with 50% of work executed outside of the state of GA

> 250

Years of experience in our leadership ranks which we continue to infuse as we grow



Growth Oriented in 2023 and Beyond

A 20% CAGR healthy revenue growth since our inception

Focused on broadening our solution center capabilities and functional expertise in 2023

> 30

Clients we have served with global revenues over \$1B

Collective Insights is a full-service Management and Technology Consulting Company.



Clients come first.
What's best for us is
what's best for you.
It's that simple.

We stick around
after strategy. Our
work isn't done until
you succeed.

We drive successful
organizational
change, leading to
faster adoption and
usage.

The right approach
that meets your
challenge—not a
generic version of it.

Professionals with a
breadth of experience
matched by deep
expertise.

The Collective Insights Difference



Technical Expertise

Provide deep delivery expertise and partnerships enhanced by our ability to align technology implementation with business objectives



Culture of Caring

Build teams of consultants who care about clients, are smart, capable, fun to work with, and know our clients well enough to fully invest in their success



Exceptional Value

Deliver proven solutions tailored as needed for each client with a partnership approach, a great work ethic and a focus on exceeding expectations



Nimble Execution

Quickly adapt to changing project dynamics and evolving client needs to maximize the chance of their success and our continued growth

At Collective Insights, community is culture.



Our Community Partners

At Collective Insights, our community is more than just something we're part of. It's a guiding light for who we are. Rather than write a check or simply log volunteer hours, we work for a seat at the table so we can make a difference at a fundamental level. You'll still find us lending a hand or sharing a donation, but more than that, we're invested in the impact that comes after those actions.



Our Professional Partners



Together, We'll Reach a Better Best

We draw from deep experience to tailor a solution fully informed by your actual business goals. Then, we roll up our sleeves and work alongside you to achieve them together.

We bring our best to bring out yours.

Our Services. Your Success



Business Transformation

Plan to become the best. ➔



Technology, Information & Security

Empower the modern enterprise. ➔



Human Capital

Equip every employee to excel. ➔



Operations & Management

Act like you mean it. ➔

What is your organization doing differently to gain a competitive advantage and how do you plan to win in your market – not just today but 5, 10, even 15 years from now? We can make transformation easier.

Technology certainly can help drive business: the question is where will it take you? Everything depends on preparing up-front for the course ahead. We anticipate twists and turns and help secure your assets.

Whether it's a fresh look at your workforce and their capabilities, refocusing efforts to remove functional silos, or creating messaging to help prepare for the future, we're right there, with you.

Keeping your business running is both a science and an art form. It starts with people – whether it's an outside vendor, local employee, or head of a department – everyone must be in alignment.

Our Microsoft Experience

Collective Insights is a Microsoft partner with broad enterprise expertise in legacy and cloud Microsoft infrastructure, platforms, services, and software.



- Microsoft Solutions Partner for **Security and Modern Work**, with specializations in **Identity and Access Management** and **Threat Protection**
- Deep Microsoft knowledge stemming from our team of highly skilled and seasoned Solution Architects, Engineers, Consultants, Project Managers, industry thought leaders, and Microsoft product teams to solution, implement, and manage high-profile deployments to large enterprises

On-Premises



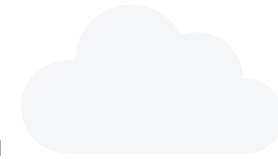
- Several years of experience modernizing, securing, and migrating on-premises and legacy infrastructure and services to modern datacenters and Microsoft Cloud platforms
- Demonstrated history of well-established value accelerators, and detailed implementation frameworks used to conduct large scale production identity, security, data, and collaboration migrations for complex, multi-national enterprises, including Fortune 500 companies

Cloud



- Established history of implementing solutions such as Microsoft Defender, Entra, and Purview to secure data contained in Microsoft 365 and Azure
- Experts in all products and services encompassing Microsoft 365
- Proficient in deploying Azure data, identity, infrastructure, security, and storage solutions
- Skilled capability for Microsoft integration with 3rd party SaaS products and Microsoft deployments in datacenters and other cloud services

Microsoft Cloud Expertise



Collective Insights architects and deploys a suite of solutions and services to ensure a successful Microsoft 365 implementation across any organization.

Microsoft 365 and Azure

Our team's extensive knowledge in Microsoft Cloud products stems from specializing in infrastructure, platforms, and solutions surrounding Microsoft 365 and Azure. Our specializations in cloud migrations, security, and compliance builds on our history with these core products.

Microsoft Entra

Our broad experience with Azure Active Directory allows us to implement solutions for protecting, securing, and managing identity governance across all identities, devices, and applications in an enterprise. Permissions Management allows us to manage identity visibility, ensuring consistent security throughout multiple cloud services. Microsoft Entra further enables the use of other core security and endpoint products, including Microsoft Intune.

Microsoft Purview

We have a successful track record in deploying compliance solutions surrounding data classification, data lifecycle management, data loss prevention (DLP), e-discovery, Information Protection, and Insider Risk Management. Microsoft Purview allows us to enable protection for client data to reduce the risk of data loss and identify other weak or risky areas in company data utilization.

Microsoft Defender

The suite of solutions under the Microsoft Defender brand have enabled our team to secure endpoints, cloud applications, network devices, and mitigate threats for multiple platforms and services. Microsoft Defender has been instrumental in permitting enterprises to keep their information secure, while enabling hybrid work and promoting productivity for their workforce.



While the technology changes, we believe all system adoption projects require a combination of technical expertise, a proven framework, and thoughtful change management to be successful.

Contact us to schedule
a consultation today!



Contact Us:

<https://www.collectiveinsights.com/contact-us>

Website:

<https://www.collectiveinsights.com>

About Us

Collective Insights is a Microsoft Certified Solutions Partner with extensive capabilities in Security, with specializations in Identity and Access Management and Threat Protection.

We build the business case, create the plan, and then drive our clients' modernization of legacy, on-premises, and siloed technology.

We implement Microsoft solutions like Microsoft Defender, Microsoft Entra, and Microsoft Purview to secure Microsoft 365 and Azure to keep our customers safe while increasing productivity in the modern work environment.