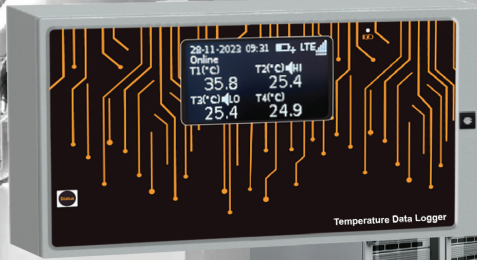


8 Channel Temperature Data Logger for Live Monitoring with Mobile Apps, Alerts & Analytics

Model
IBI-WT8Ch



Department of Telecommunications
Ministry of Communications
Government of India



Specifications

IBI-WT8Ch - 8 Channel RTD Temperature Data Logger

Input	RTD	PT100 2/3/4 Wire PT1000 2/3/4 Wire (Optional)
Temperature Measuring Range		PT100 : -200°C to 550°C PT1000 : -200°C to 550°C (Optional)
Power Supply		DC 5V/1A
Accuracy		0.5°C (0.05% of Full Scale)

Hardware Features

- 2.4" 128X64 OLED monochrome Graphical Display
- Internal Li-Ion 8000 mAh battery with under/over voltage protection, up to 18 Hrs battery back-up during power failure
- Plug & Play Device
- Parameters can be Configured using Smart Phone or Laptop Over Wi-Fi by Connecting to Data Logger
- Wi-Fi 802.11 b/g/n 2.4 GHz
- 40,000 Records can be Stored in Memory in case of Network Failure
- Internal Buzzer to Indicate High or Low Alarm

Note: RTD Sensors not included with Data Logger, which need to purchase separately.
RTD Sensor cable length can be customized, Extra charges applicable

Software Features

- Pharma, Chemical & Laboratory Equipment Monitoring application
- Different Views (Dashboard / Map / List), Analytics, Device Management, User Management, Alerts Management, Maintenance Schedules & Ticket Management
- Custom Reports (21CFR Part 11 Compliance) PDF, CSV, Excel
- MKT Value, Audit Trail, Alarm Log, Trend Graphs
- Alerts, Push Notifications & SMS (Optional)
- Web & Mobile Apps (iOS & Android)



www.ideabytesiot.com | vinay.bandela@ideabytes.com

Call/Whatsapp: +91 8074275285

Ideabytes Software India Pvt Ltd, 11th floor, Unit 1, Kapil Towers, Financial District,
Nanakaramguda, Hyderabad-500032, Telangana, India.