



 **Microsoft**
Solutions Partner
Infrastructure
Azure

 **Microsoft**
Solutions Partner
Digital & App Innovation
Azure

Specialist
Linux and Open Source
Databases Migration

 **Microsoft**
Solutions Partner
Data & AI
Azure

Accelerate Growth on Cloud

Azure Arc Workshop

About Blazeclan



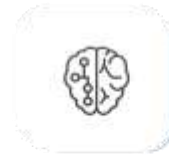
**Born in Cloud
in 2011**



**750+ Resources
500+ Cloud
Certified**



**End to End
Cloud
Competencies**



**Focus on
Innovation**



**Vast Experience
Across
Domains**



**500+
Customers
Engagements**



**Culturally
Aligned-
One Team**



**Revenue
Growth at
50% CAGR**



**Differentiated
Proprietary
Frameworks**

Market Recognition & Compliance Certification



Key Partnerships



blazeclan

- Microsoft Solution Partner - Infrastructure
- Microsoft Solution Partner - Data & AI
- Microsoft Solution Partner - Digital & App Innovation
- Infra & Database Migration Specialization

Microsoft
Solutions Partner
Infrastructure
Azure

Specialist
Infra and Database Migration



- Mentioned in Gartner's Market Guide for Public Cloud Managed & Professional Services, Asia/Pacific 2022
- CRN recognition in MSP500 list in the Pioneer 250 category for 2022
- Ranked 72 in Top 100 Vertical Market MSPs List 2022

Azure Arc enable organizations to extend Azure's capabilities to manage & govern resources that are outside Azure cloud environment. It brings your on-premises, multi-cloud & edge resources into the Azure management & governance framework.

OBJECTIVES

- **UTILIZE** Existing Non-Azure resources
- **IMPLEMENT** Quick solution to utilize current resources
- **MANAGE** Resources seamlessly external to Azure Cloud
- **GOVERN** Resources from a centralized platform
- **CONSISTENT** Development across different environment

BENEFITS

- **SAVE** Cost by utilizing existing resources
- **IMPROVED** Performance & Scalability
- **OPTIMIZED** Resources leveraging Hybrid / Multi Cloud
- **SEAMLESS** Integration of Azure & Non-Azure resources
- **FLEXIBLE** infrastructure & connectivity options

Azure Arc introduces cloud-first hybrid management for microservices, data, and traditional services. The primary emphasis lies in standardization, interoperability & compliance, providing you with valuable insights & management capabilities through the central Azure control plane.

Azure Arc - Highlights

Embrace a cloud-first hybrid management approach that simplifies the intricate task of overseeing distributed environments, spanning private & public clouds, data centers & the edge.

Azure Arc Policies & Governance

Define policies to ensure that your hybrid & multi-cloud resources adhere to organizational standards & compliance requirements.



Azure Arc-enabled Kubernetes

Register Kubernetes clusters which you want to ensure if they are running a supported version.



Azure Arc Automation & DevOps Integration

Integrate Azure Arc-enabled resources into your automation & DevOps workflows using Azure DevOps, ARM templates, etc.



Azure Arc-enabled Servers

Implement for servers by installing Azure Connected Machine agent on-premises or edge servers that establishes a connection between servers & Azure.



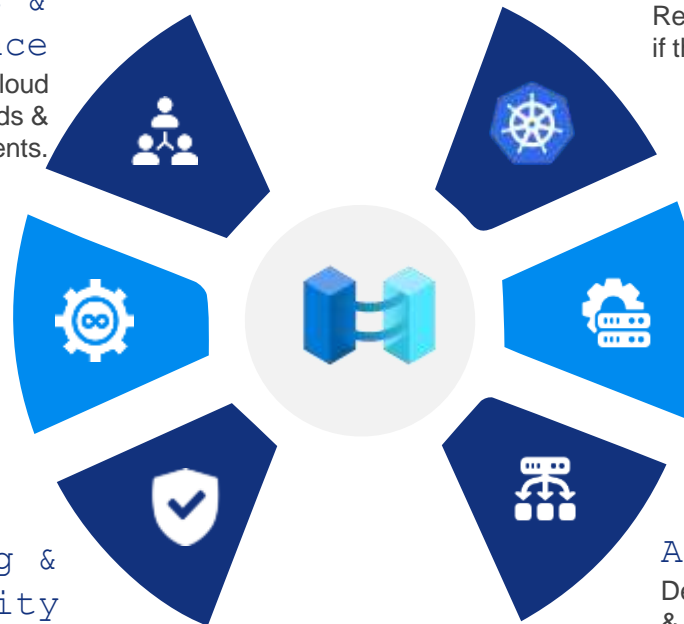
Azure Arc Monitoring & Security

Insights into performance of resources & Security Center helps you detect & respond to security threats & vulnerabilities.

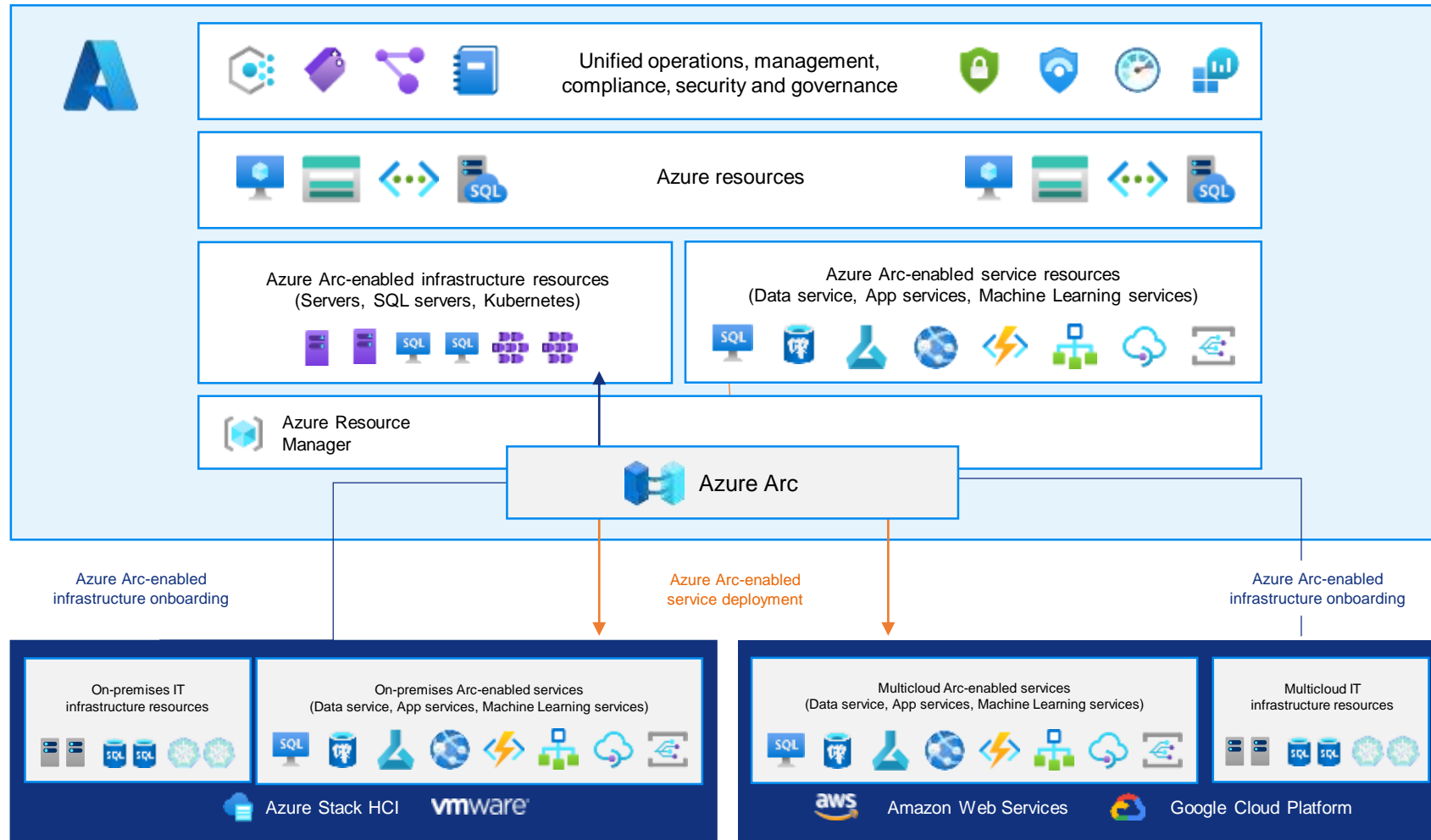


Azure Arc-enabled Data Services

Deploy Azure data services like Azure SQL Managed Instance & PostgreSQL Hyperscale on your own infra or other cloud.



Azure Arc – Reference Architecture



Azure Arc Workshop Agenda



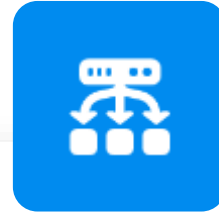
Introduction & basics

- Welcome and introductions
- Overview of Azure Arc and its significance
- Briefly discuss the workshop's objectives
- What is Azure Arc?
- Key benefits and use cases.
- High-level architecture overview.



Connecting Resources

- How to set up your Azure Arc environment
- Installing and configuring the Azure Arc agent.
- Connecting on-premises resources to Azure.



Azure Arc for Servers

- Server management capabilities.
- Overview of policies and configuration management.
- Monitoring and troubleshooting.



Azure Arc for Kubernetes

- Introduction to Kubernetes management with Azure Arc.
- Connecting and registering Kubernetes clusters.
- Applying policies and configuration management.



Q&A and Discussion

- Open the floor for questions and discussion.
- Address specific use cases or challenges raised by participants.
- Provide resources for further learning

DELIVERABLES

Azure Arc workshop Materials, Resource Templates and Scripts| Azure Arc Reference Documentation |

Azure Arc Implementation Approach



Week 0

Arc Workshop

- Introduction
- Azure Arc Basics
- Connecting Resources
- Azure Arc for Servers
- Azure Arc for Kubernetes
- Q&A & Discussion



Week 1

Assessment & Preparation

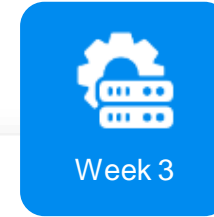
- Assess existing infra
- Identify servers, K8s clusters & data services to be connected.
- Verify prerequisites
- Prepare infrastructure for Azure Arc
- Ensure necessary Azure subscriptions & permissions



Week 2

Agent Installation & Registration

- Install Azure Connected Machine agent on servers.
- Parallelize possible installations
- Agent installation
- Register servers with Azure Arc
- Register & clusters & data services



Week 3

Configuration, Integration & Testing

- Configure Azure Arc settings as per predefined requirements
- Integrate Azure Arc with Azure management tools such as Azure Policy & Azure Monitor.
- Test Azure Arc functionality, focusing on core use cases



Week 4

Final Testing, Training, & Deployment

- Perform thorough testing
- Address issues that arises
- Train IT stakeholders on Azure Arc usage
- Deploy Azure Arc to prod environment
- Monitor closely during initial deployment
- Handover & Sign-Off

DELIVERABLES

Azure Arc Implementation Plan, Design & Framework | Azure Arc Implementation, Validation & Monitoring | Azure Arc Docs & Reports

THANK

YOU

Blazeclan Technologies Pvt Ltd

Godrej Eternia C, A-Wing, 8th Floor,
Old Pune-Mumbai Rd, Wakadewadi, Shivajinagar,
Pune, Maharashtra 411005



+91 9689889138



sales@blazeclan.com



www.blazeclan.com