



YODI F E I I I

Smart Desk Booking System

Powered by 

ASSET MANAGEMENT & ESG OPTIMIZATION

The workspace revolution in post COVID-19 era



The COVID-19 pandemic has affected our work habits, forcing us to work mainly remotely. Statistics reveal that about 44% of companies globally do not allow remote work, many of them because they were not prepared for the new conditions

More and more employers admit that hybrid work models are here to stay. They acknowledge a lot of challenges but also opportunities:

On the one hand, they must ensure that employees return safely to the office. Physical distance policies must be applied and managed to mitigate the risk of COVID-19 spread among employees. Then, in the unfortunate case of a late identification of COVID-19 infected workers, they must make certain that their immediate contacts in the workspace are also identified and notified.

On the other hand, the new conditions lead to unoccupied indoor and outdoor space. Many of the companies were facing workspace shortage before the pandemic and the new status quo creates an opportunity for them to cover their space needs without increasing the cost of assets and facility management services.

How will the companies adjust to the new reality, offer high health and safety levels and grasp the opportunity for cost savings?

Adjusting to the new normal



Flexibility and adaptability are crucial to make it all work. Scalable solutions, strategic insights, performance measurement are the key to faster and easier adaptation to the new normal.

Questions such as: "How do we provide more autonomy, choice and flexibility to our employees?", "How do we redesign the workplace and reuse freed space effectively?", "How can we flexibly reschedule the cleaning services?" and many more must be answered.

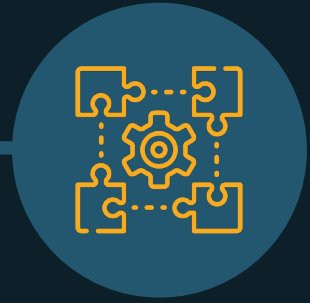
YodiDesk is a cloud-based rich-featured **fully customizable desk-booking platform**, offering an end-to-end solution for all aspects of the workplace lifecycle mentioned above and more.

YodiDesk is a module of **YodiFEM** - the Integrated Workplace Management System (**IWMS**) of Yodiwo.

It also allows companies to develop a tracking process in the case of employees affected by COVID-19 and their immediate contacts to lower the transmission risk of the virus.

YodiDesk enables companies to safely and efficiently implement long-term hybrid workplace strategies.

WHAT'S IN IT FOR THE EMPLOYEES



- **User-friendly mobile app** for the employees to book their desk or meeting rooms from the available buildings / floors / rooms / desks and set a check-in period.
- **Confirmation emails** are sent along with unique barcodes to identify the booking.
- Easy front desk identification process by scanning the **unique barcode**.
- Easy access to booking history and extensive user notifications.

Desk booking assistant

Booking name (optional)

Date DD-MM-YYYY

Select multiple

Time HH a

Duration (hours) 9h

Building Select...

Floor Select...

Desk group Select...

Book

My bookings

My bookings

Show past bookings

Mobile list view

Select desk

FLOORPLAN TABLE

Desk No28

Desk group: Innovus

Desk info:

Change floor

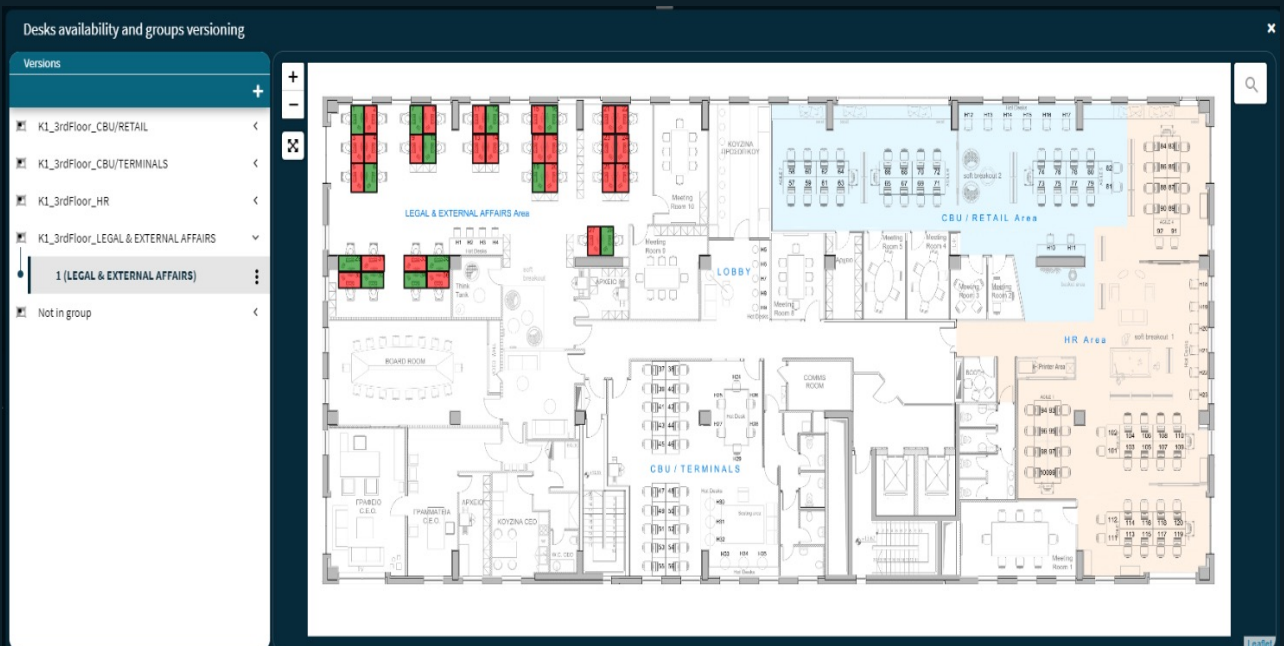
Finalize booking

Desk selection from mobile

WHAT'S IN IT FOR THE OFFICE ADMINISTRATORS

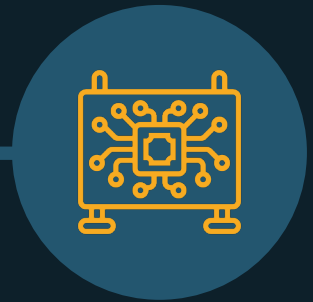


- Admins can **register new buildings, upload floorplans, define desk areas, create groups of desks**, identify the desks per groups that should remain unused, provide rules for desk occupancy (e.g. max percentage of occupancy), import occupants' data, define groups of occupants, assign occupancy rights for groups of desks, import data of security guard users etc.
- Can assign user roles (**admin / simple user**), and access rights per user.
- Custom categorization of desks in groups.
- **A real-time view** of the current workspace status, used vs. unused areas.
- **Rich interactive analytics & exportable reports.**
- **Workspace allocation** (dynamically define the desks allowed to be booked) and versioning.

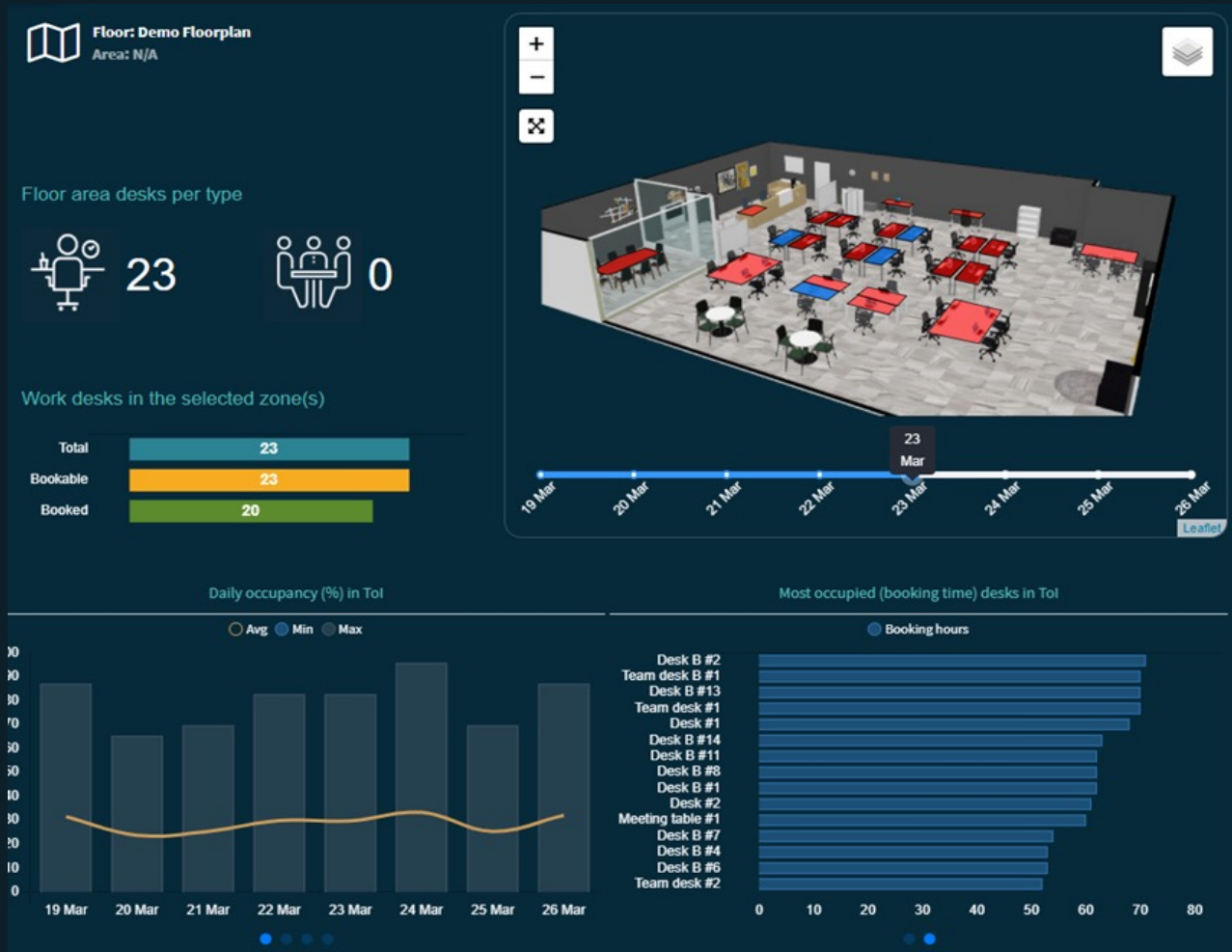


Setting booking availability per group version

ANALYTICS & REPORTING



- Floor-level advanced analytics and historical data with desk resolution
- Real-time occupancy monitoring with visual time-machine functionality
- Facility/Deployment/Organization-level aggregated analytics and historical data
- Multi-format modular report generation



floor analytics



MAIN BENEFITS



- Cost saving by reorganizing unused office space for other purposes.
- An easy transaction to a hybrid workplace environment.
- An easy to implement and use solution for a COVID-19 flexible & secure workplace.
- Easy to track employee's direct contacts in case of COVID-19 infection among employees.
- Cleaning services optimization by having the real-time picture of the occupied/unoccupied desks and meeting rooms.
- OPEX savings by eliminating the unnecessary facility management costs in un-used office areas.
- Identify which desks/areas are the most popular and which are under-utilized and increase space efficiency.

WHAT COMES AFTER



YodiDesk is just one out of many modules provided by **YodiFEM** - the IWMS of Yodiwo.

Those modules aim to make buildings smarter and more sustainable and to improve the wellbeing of their occupants. Some examples:

- **Energy Management with AI** models for forecasting and detection of abnormal energy consumption occurrences
- **Space occupancy & air quality management**
- **Advanced condition monitoring analytics** (air temperature & humidity, CO2 levels, lighting quality, sound levels etc.)



WE TRANSFORM FACILITY MANAGEMENT