



NASSAR

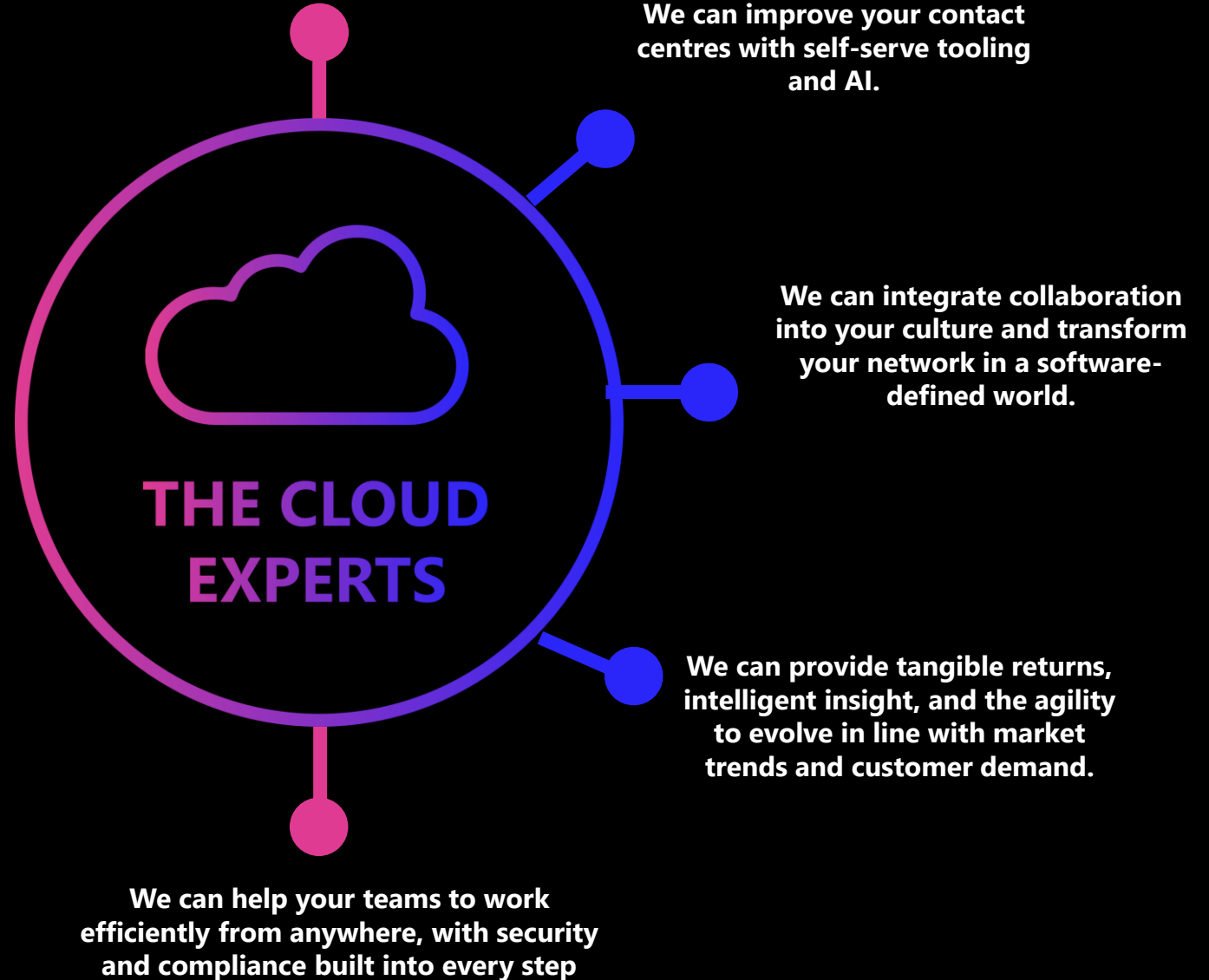
MICROSOFT AZURE
ARC ACCELERATOR



WHO IS NASSTAR?

NASSTAR IS A CLOUD SERVICES SPECIALIST

With an integrated suite of services, we design, implement, and manage Hybrid and Public Cloud solutions, innovative communication tools and high-performance networking to help our customers transform and modernise. We help companies evolve infrastructure from capital-intensive hardware to a discipline that is modern, software-defined and intelligent. As a cloud first company our mission is to serve customers as a trusted partner for all cloud technology requirements to drive positive business outcomes



CLOUD SERVICES



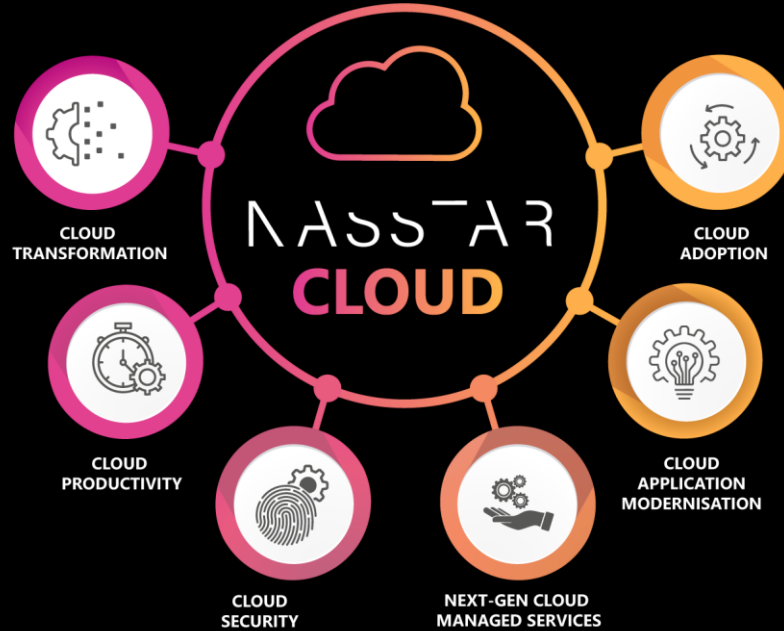
**LEADING MICROSOFT
MODERN WORK PARTNER**

OUR PEOPLE

**55 Microsoft Certified Professionals
with 174 Certifications**



DESIGNATIONS



OUR CUSTOMERS



OUR EXPERTISE



QUALITY AND COMPLIANCE ASSURED

ISO 27001, 20000, 14001 & 9001 accredited and PCI-DSS certified



PUBLIC SECTOR APPROVED

Trusted HSCN (NHS-Digital) and Crown Commercial Services approved partner



NEXT-GENERATION MANAGED SERVICES

24/7 proactive services with systems automation and AI



EXPERIENCED PROFESSIONALS

A team of 1,100 with 500+ technical experts on hand to support you



SERVICE EXCELLENCE

ITIL aligned processes and dedication to continuous service improvement



CUSTOMER SATISFACTION

Outstanding customer service CSAT 9.5/10



**EXTENDING SECURITY UPDATE
SUPPORT FOR WINDOWS SERVER
2012 R2 USING AZURE ARC**

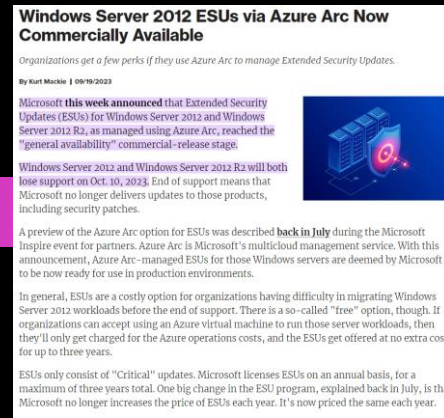
WHY AZURE ARC ACCELERATOR FROM NASSTAR?

Many companies and their critical workloads are affected by Windows Server 2012 R2 or SQL Server 2012 going end of life from the 1st of October 2023.

No new security updates will be available unless they are entitled to Extended Security Updates (ESU).

The cost and complexity of remediating this issue has been difficult, causing a heightened risk of security threats or compliance breaches.

Migration of workloads to Azure or rehosting workloads on newer Operating Systems requires planning and additional engineering work to complete.



THE SOLUTION?

We have created an engagement that utilises Azure Arc to provide access to Extended Security Updates for Windows Server 2012 R2, building a best practice footprint in the cloud and providing valuable business intelligence around the existing estate to inform the next steps in the cloud journey.

WHAT DO ORGANISATIONS NEED TO BE AWARE OF?

Towards the end of September 2023, Microsoft made Extended Security Updates available via an Azure Arc subscription in CSP.

We have created an offer to enable this service for a customer and enrol servers to enable Extended Security Updates.

In this engagement, we will build a small Landing Zone* to host the Azure Arc instance and deploy the scripts required to enrol required servers.

We'll also work closely in partnership with Microsoft to undertake a non-disruptive assessment of your IT estate to provide actionable information to facilitate your move to the cloud.

EXTENDED SECURITY UPDATES ENABLED BY AZURE ARC

FLEXIBLE BILLINGS AND SAVINGS

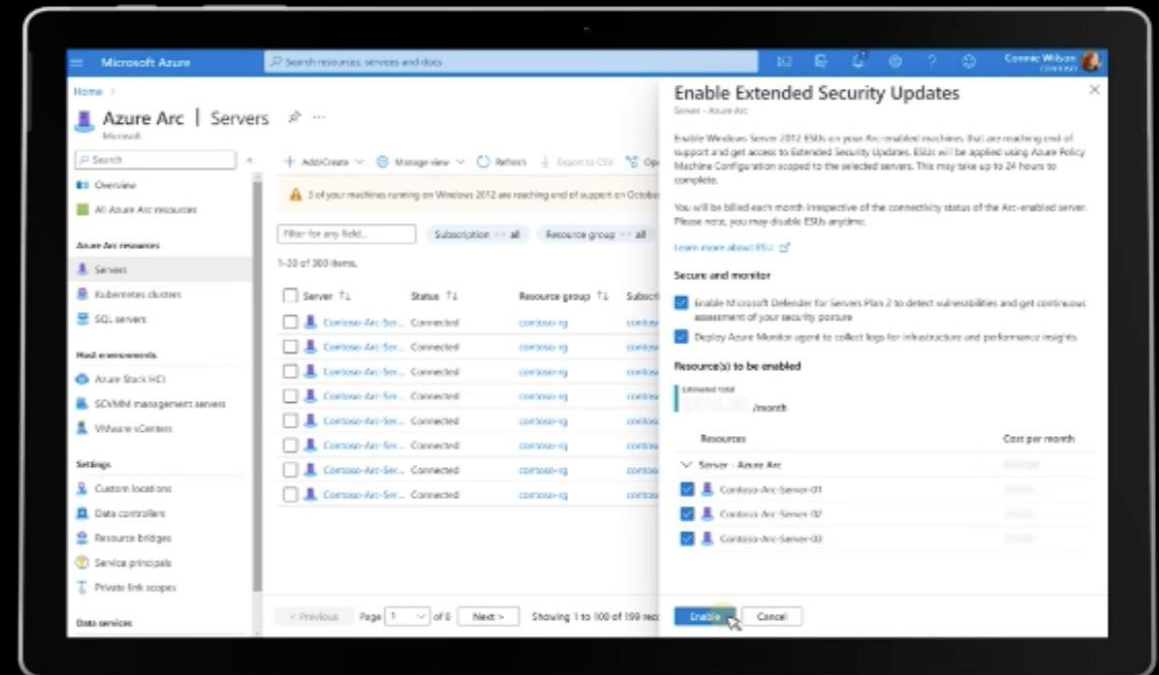
Monthly billing model centralized in azure to run end-of-support operating systems

VISIBILITY AND RELIABILITY

Ensure consistent Windows Server 2012/R1 and SQL Server 2012 performance with high availability and visibility over your entire data and server estate

SECURITY AND COMPLIANCE

Seamlessly extend Azure security and governance to your environment and stay compliant with your support software



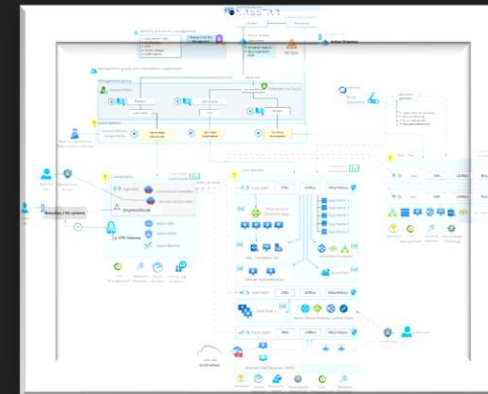
Enroll and purchase ESU's directly in the Azure portal

WHAT DO YOU GET?

- Modular Azure Landing Zone
- Valuable and Actionable Business Information
- Server inventory, readiness and compatibility, utilisation

- Azure cost projections
- Guidance around phased migration approach
- Microsoft funding guidance

OFFER	PRICE
Azure Arc Landing Zone Accelerator	£9,615*
Servers Enrolled and supported under ESU	circa £52 per server per month
Azure Solution Assessment and BI (in conjunction with Microsoft)	FOC Worth £10k+
*OPTIONS	PRICE (ON TOP OF LZ ACCELERATOR)
Azure Landing Zone Standard	+ £5,575
Azure Landing Zone Bespoke	+ £19,496



LANDING ZONE OPTIONS

	AZURE ARC LANDING ZONE ACCELERATOR*	STANDARD LANDING ZONE	BESPOKE LANDING ZONE
Subscriptions	Core, Management and Connectivity	Core, Management and Connectivity	Many
Security	Pre-defined	Pre-defined	Bespoke
Policy	TBC "Arc Policy"	Pre-defined	Bespoke
Arc deployment	ESU only	Full	Full
Identity	No	No Hybrid Identity, No PIM Predefined static groups	Yes
Complex Network Connectivity (e.g. Express Route, Private Endpoints, multi-sites etc.)	No	No	Yes
Firewall	No	Yes	Yes
VPN	No	Single Site to Site	Yes
vNet integrated	No	Yes	Yes
Naming Convention	N/A	Pre-defined	Bespoke
IP Schema	N/A	Pre-defined	Bespoke
Workshops	No	No	Yes
DR / BCP	No	No	Yes
Defender for Cloud	No	No	Yes
AVD Ready	No	No	Yes
Regions	Single	Single	Multi
DevOps / Automation	No	Yes	Yes
HLD / Build Documentation	HLD Only LLD if Managed Services Customer	HLD Only LLD if Managed Services Customer	HLD and LLD
FinOps	No	No	Yes
Monitoring	No	Basic / Enabled	Yes
PCI Ready / Compliance	No	No	Yes

AZURE ARC LANDING ZONE RUNNING COSTS

SERVICE TYPE	REGION	DESCRIPTION	ESTIMATED MONTHLY COST
IP Addresses	UK South	Basic (Classic), 4 Dynamic IP Addresses X 730 Hours, 0 Static IP Addresses X 730 Hours	£7.22
Key Vault	UK South	Vault: 100 operations, 0 advanced operations, 0 renewals, 0 protected keys, 0 advanced protected keys; Managed HSM Pools: 0 Standard B1 HSM Pool(s) x 730 Hours	£0.02
Blob Storage	UK South	Block Blob Storage, General Purpose V2, Hierarchical Namespace, LRS (Locally Redundant Storage) Redundancy, Hot Access Tier, 1,000 GB Capacity - Pay as you go, 10 x 10,000 Write operations, 10 x 10,000 Read operations, 10 x 10,000 Iterative Read operations, 10 x 100 Iterative Write operations, 1,000 GB Data Retrieval, 1,000 GB Data Write, 1,000 GB Index, 1 x 10,000 Other operations	£37.86
Arc Node	UK South	Azure Arc Node	£4.77
WinSvr 2012 ESU	UK South	Extended Support for Windows 2012 per virtual core (minimum of 8 cores per VM)	£3.79 per core

* Please note that for Arc only server enrolments that enrolled servers only initiate outbound requests on port 443. There are no inbound requests and no access to the servers other than seeing basic metadata.

PRICINGS FOR ESU'S ENABLED BY AZURE ARC

ANNUAL PRICE (SAME AS VL)

ANNUAL PRICE (1/12 OF ANNUAL)

WINDOWS SERVER		
Arc ESU: Windows Server 2012 Datacentre 16 Core	\$5,232	\$436
Arc ESU: Windows Server 2012 Standard 16 Core	\$908	\$75.60
Arc ESU: Windows Server 2012 Datacentre 8 Core	\$2,615.74	\$218
Arc ESU: Windows Server 2012 Standard 8 Core	\$454.12	\$37.84
Arc ESU: Windows Server 2012 Datacentre 2 Core	\$654.02	\$54.50
Arc ESU: Windows Server 2012 Standard 2 Core	\$113.53	\$9.46
SQL SERVER		
Arc ESU: SQL Server 2012 Enterprise 2 Core	\$11,685.29	\$973.77
Arc ESU: SQL Server 2012 Standard 2 Core	\$3048.07	\$254

THINGS TO BE AWARE OF - ESU

- All ESU will be backdated to the end of support
- Windows Server ESU licences require a minimum of 8 cores per virtual machine or 16 cores per physical
- SQL Server 2012 ESU requires a minimum of 4 cores
- Not all versions are supported. E.g. SQL Web edition is not entitled to ESU
- Direct ESU (Non-Arc is available but require a minimum of 1 year)

NASSAR

