

Forest Products SAMADHAN- A proven ERP solution for your business

Solution Overview

Customer Profile

Manufacturing and selling Wooden Boxes, Cases and crates, Composite Boxes, and other Wood products.

Business Situation—What are we solving?

A typical unit uses disparate software solutions to manage its operations, financials, resources and infrastructure. It has expansion plans in the pipeline, to meet the demands for a much better product and services coupled with pressure on prices. With SAMADHAN solution you will be able to integrate them together with one solution, that also on a very robust platform D 365 F&O.

The units struggle to cope with ever increasing demand of systematic working. The senior management wears many hats, has a hectic routine of long hours every day and finds profits difficult to come by. This becomes more challenging when you have variety of products manufactured using multiple category of raw materials and design as multi-level BOM. SAMADHAN has made it easy through PDI (Product design interface) integrated with Item, Purchase, Manufacturing, Resources and costing structure.

Integrated information of Operations and Finance on a robust international ERP platform is a crying need. Scalability, usability, technology upgrade path and most importantly prior understanding of the manufacturing business is identified as some of the parameters for identifying a suitable platform and an appropriate implementation partner.

Solution at a glance—How are we solving?

A specialized integrated software solution created for manufacturers of customized Forest products manufacturing, on a world class business suite, Microsoft Dynamics 365 F&O addresses the unique needs of a typical company. It gives full control on the Operations and Finance from the time they get an enquiry till delivery to getting a satisfied and happy customer.

While the software is used for the day to day working, Microsoft Dynamics 365 F&O as a reliable and integrated framework manages the Sales, Purchase, Inventory, Manufacturing, Quality, Asset Management, overall Finance & Accounts and customer relationships control.

The natural integration of the solution with Microsoft Office add ins which includes Microsoft Excel, Microsoft Outlook (the communication interface), SharePoint etc. helps the organization in leveraging the information in the integrated solution in multiple ways.

Compelling features of Forest Products SAMADHAN

- Pre- sales costing process through Product design interface, integrated with Product, manufacturing, Purchase, costing and quality.
- Sales quote without creating the Product in beginning stage itself.
- Sample handling
- Auto creation of Items and FG BOM and Route when Quote is approved
- Role specific Workspaces
- Security role configuration according to user's duty & privileges
- Master planning, Cutting plan and execution, Production planning.
- Scrap (Qty and cost) Estimated VS Actual traceability.
- Flexibility to change the Mother RM item at planning stage.
- Gantt chart view of Production scheduling.
- Approval Workflow configuration.
- Document/ drawing linking facility
- Die and screen threshold management
- Quality control
- Multi country statutory compliance.
- Vendor and Customer complaints management
- Gate management
- Dispatch schedule and palletization of finished goods
- Works on mobile, tablet and PCs
- AI and Power BI enabled

SAMADHAN – Enterprise Solutions



Covers the entire operations with one integrated solution

All activities starting from Quote to Cash, happen through the solution and hence all controls are enforced in real time, complete information is used in real time and after the activities all areas of this solution are impacted in real-time.

Forest Products SAMADHAN solution is specially designed for an industry who are engaged in giving customized wood products solution and Packaging products to their customers. These can be Wooden boxes (with or without pallet), Wooden Euro pallet , Cases and Crates, Honeycomb boxes, Nail less boxes, Corrugated boxes, Composite Boxes made up of various components like: Corrugated Box with Wooden Pallets and Foam made components. There may be many more accessories associated with box like foam, steel strips, handles, steel structures etc.

Pre Sales costing in case where there are multilevel bill of material, complex production processes becomes very difficult to manage. Forest Products SAMADHAN has a very unique feature to give the user ease of creating, maintaining, revising the Pre Sales Costing. Product creation process is built with unique controls for preventing risk of duplicate item creation or improper product creation.

Pre-sales PDI | Standard view

General

Finished Goods

Define process cost

FINISHED GOODS

Item code
FG-CC000000326

Description
PLYWOOD BOX WITH PALLET-1...

Length
1,432.00

Width
1,220.00

Height
1,035.00

Thickness

Grade

Default Order Type
Production

FG unit cost
6,634.51

FG-Managed cost / Base price
10,559.31

UOM
NOS

Price as per expected PO qty
263,380.32

Test group
QCPW000001

Route number
RCUTE-00000010

Route unit cost
18.70

BOM
BOM-000000007

Expected PO quantity Monthly
40.00

Subcomponents products/FG BOM Items

+ Add product

Delete

Define New Product Attribute values

Check attributes

BOM

Define process cost

Line number	Template name	Category	Item number	Description	Location	UOM	Length	Width	Height	Thickness	Grade
1	SC-SKIDS&RUNNERS	SC-SKIDS&RUNNERS	SC-SKRN000000031	PLYWOOD SKID-1200X1350X50MM		NOS	1,350.00	1,200.00	50.00		
2	FG-PALLET	FG-PALLET	FG-PALT000000194	PLYWOOD PALLET-FULL DECK-1210X1080X85MM-9 BLOCKS-N/A		NOS	1,210.00	1,080.00	85.00		
3	CS-PLYWOOD	CS-PLYWOOD	CS-PLYW000001215	PLYWOOD-1210X1050X12MM-CR GRADE-OKOUME BROWN FACE		NOS	1,210.00	1,050.00	0.00	12.0000	CR GRADE
4	CS-PLYWOOD	CS-PLYWOOD	CS-PLYW000001216	PLYWOOD-1180X1040X12MM-CR GRADE-OKOUME BROWN FACE		NOS	1,180.00	1,040.00	0.00	12.0000	CR GRADE

Proactive action pointers and dashboards in role-tailored user interface

As soon as a user login, he is taken to a user interface with matter relating to his specific role in the organization neatly arranged in dashboards and action pointers. As soon as he logs into the system he gets working and in light of real time information. One click on the action pointers or the dashboard takes the user inside and helps him get a 360 degree view of the subject at hand.

Standard view

Sales order processing and inquiry

Summary

209

Unconfirmed

0

Delivery date changes

1107

Delayed order lines

0

Orders on hold

154

Confirmed

104

Partially shipped

0

Rejected order lines

All sales orders

All customers



Integrated Master planning (Planning optimization) serves MRP and Production scheduling

The Master plan calculates net requirements. It's based on actual current orders and enables companies to control inventory replenishment on a short-term, day-to-day basis. Another term to describe it's the *Net requirements plan*.

The Master planning module determines the supply (materials) and capacity (resources) needs that will meet current demand (the net requirements). It generates the Planned purchase order, Planned production order, Planned transfer order taking into the consideration of time fence define and the net requirement as per Sales orders in hand.

Master planning

Master plan

MASTERPLAN

Summary of the current plan

Planned orders

Calculated delays

Actions

Master planning

Completed

Last run on 7/12/2023 11:39:14 AM

Run History

Intercompany master planning

Planned orders

Urgent

Delaying sales

Delaying forecast

Delaying safety stock

Filter

Firm Modify View

Number	Reference	Item number	Requirement quantity	Site	Warehouse
MP-000000807	Planned purchase orders	RM-PLYW000000001	110.27	8004	MAIN-8004
MP-000000808	Planned purchase orders	RM-PLYW000000001	216.68	8004	MAIN-8004
MP-000000809	Planned purchase orders	RM-PLYW000000001	2.15	8006	MAIN-8006
MP-000000810	Planned purchase orders	RM-PLYW000000001	2.15	8006	MAIN-8006
MP-000000811	Planned purchase orders	RM-PLYW000000001	3.34	8006	MAIN-8006

Cutting plan to produce Cut Sizes

FG and Semi-FG Items need the Cut Sizes for production. Cut Sizes are produced from a parent RM, which can be of various sizes. Auto generation of Cutting plan having traceability of Scrap and Cost impact of parent RM adds better control on Cutting operation optimization every day. This benefits as wastage control and production cost control.

Cutting Plan | Standard view

CP-000000000003

Cutting plan header

Document number	Document date	Unit of measure	Site	Resource capacity in running mtr/day	Cost as per old item	Difference cost
CP-000000000003	7/10/2023	SQM	8002	0.00	732.30	0.00
		Cut size sub-category	Machine number	Calculated resource load in running m...	Cost as per new item	Expected scrap in kg
		CS-PLYWOOD	AST005	16.40	732.30	

Mother item details

Calculate

Confirm to consolidate

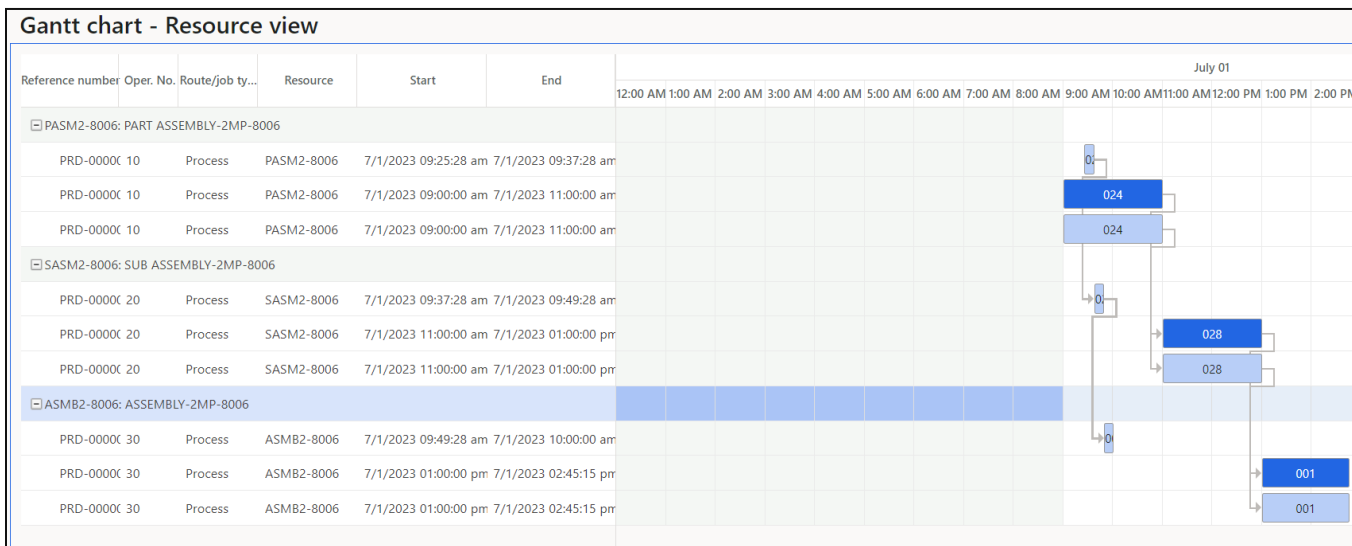
Item number	Length	Width	Grade	Thickness	New item number	QTY in pcs	QTY in area/vo...	Bom+Process ...	Available inve...
RM-PLYW000000027	2.440.00	1.220.00	BWR GRADE	12.0000	RM-PLYW000000027	1	0.2700	0.00	0.00
RM-PLYW000000056	2.440.00	1.220.00	E1 GRADE	6.0000	RM-PLYW000000056	1	0.4340	0.00	182.98

SAMADHAN – Enterprise Solutions



Production orders scheduled on resources– Gantt Chart

Gantt chart provided overall view of all production orders scheduled on different Resources (Machine or Human Resource). It may be optimized by drag and drop of Production orders across the resources to balance the Capacity and load.



QR code for Inventory control, Production and Dispatch

With the QR code integration at various stages of transaction it becomes easier and faster to handle the Inventory movement, Production order execution and Dispatch execution.



SAMADHAN™
Integration, for simplified business insights.

Site : 8008

Job card order : PRD-0000015

Product : CS-CRBD000000190

Product description : CORRUGATED BOARD-5 PLY-BC FLUTE-1270X1020MM-GYT-GYT-21 BS-10.5 ECT

Job date : 7/10/2023 12:00:00 AM

Qty produced : 60

Batch No. : BCB-000000124



6-23-2023 12:00:00 AM



Material Transfer Issue Slip

Confirmed cutting plan no : CCP-000000000061

Machine no : AST005

Product category : CS-PLYWOOD

Site / Warehouse :





Mother item no	Description	Qty Required in pcs	Location	Available Qty	Bar code/QR code
RM-PLYW000000041	PLYWOOD-2440X1220X18MM-CR GRADE-OKOUME BROWN FACE	52	RM-PLYWOOD	942	
RM-PLYW000000045	PLYWOOD-2440X1220X18MM-MR GRADE-OKOUME BROWN FACE	2	RM-PLYWOOD	103	

Material Requisition

From date : 01-06-2023

To date : 23-06-2023

Summary : No

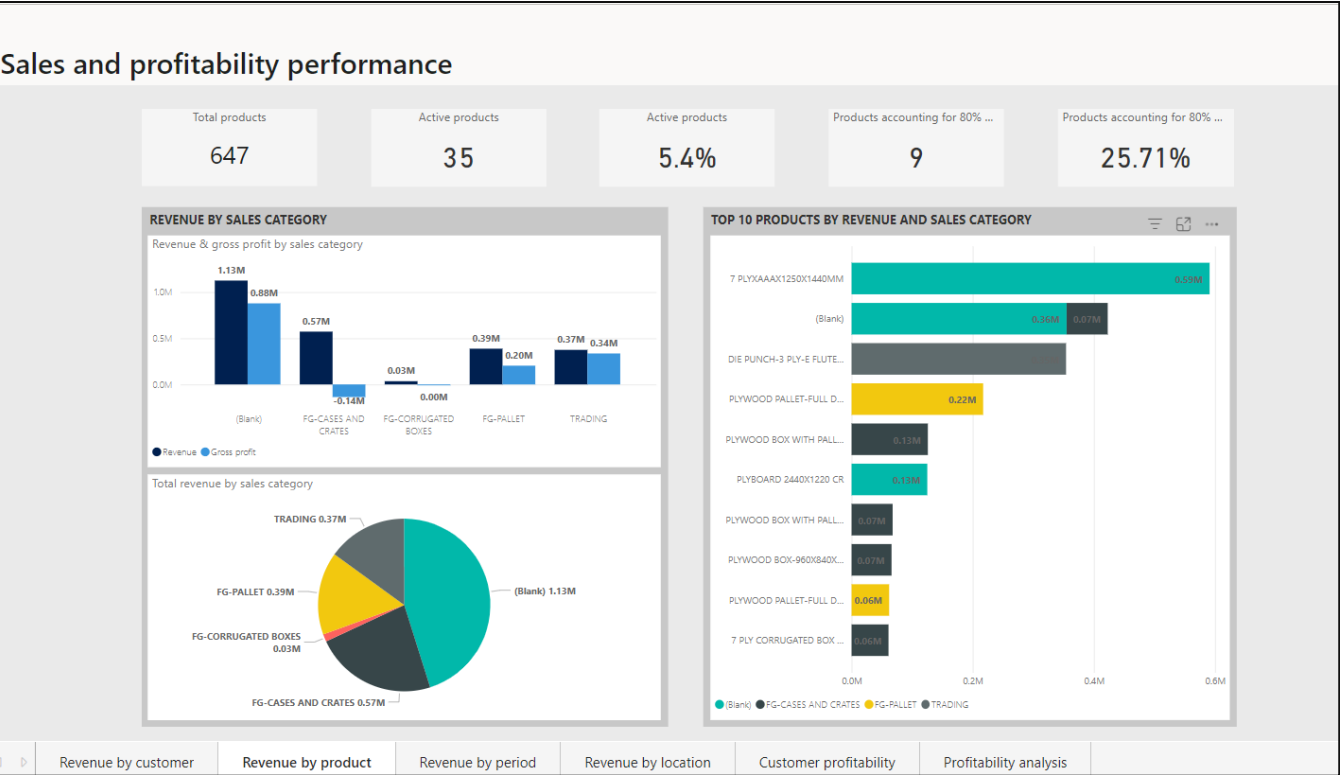
Item Category	Item No	Item Description	Production order No.	Qty required	UOM	Available qty at shop floor	Available qty at RM Store	Qty issue to shop floor	Start date	End date	QR code
RM-ADHESIVES	RM-ADH000000010	ADHESIVE-RUBBER-ROYAL COLL	PRD-0000393	0.00	LTR	500.00	1,500.00	0.00	20-06-2023	20-06-2023	
RM-HARDWARE & FASTENERS	RM-HRF5000000127	SCREW-ROUND HEAD-M6X3-DW	PRD-0000404	36.00	NOS	1,104.00	1,104.00	0.00	22-06-2023	22-06-2023	
RM-HARDWARE & FASTENERS	RM-HRF5000000137	WASHER-ROUND HEAD-M6--	PRD-0000404	36.00	NOS	604.00	604.00	0.00	22-06-2023	22-06-2023	
RM-PACKING CONSUMABLE	RM-PCCN000000100	STITCHING WIRE-12/22-GAUGE	PRD-0000407	0.05	KGS	20.01	20.01	0.00	22-06-2023	22-06-2023	





D 365 F&O- Power BI

Analytical Workspaces can use rich infographics and visuals that are supported by Microsoft Power BI. These infographics and visuals include many controls as standard. Therefore, workspaces can provide a highly visual, interactive experience for users to analyze Operations and Finance related records .



Warehouse Management

The Warehouse management module lets you manage warehouse processes in manufacturing, distribution, and retail companies. This module has a wide range of features to support the warehouse facility at an optimal level, at any time. Warehouse management is fully integrated with other business processes such as transportation, manufacturing, quality control, purchase, transfer, sales, and returns.

Filter

ADV ADVANCED STORAGE GROUP

SWL Site_Warehouse_Location

Standard view

Storage dimension groups

Name	Description
ADV	ADVANCED STORAGE GROUP

Storage dimensions

Name	Active	Blank receipt a...	Blank issue all...	Physical Invent...	Financial Inven...	Coverage plan...
Site	✓			✓	✓	✓
Warehouse	✓			✓		✓
Location	✓			✓		
Inventory st...	✓			✓		
License plate	✓	✓	✓	✓		

Warehouse specific setup

Use warehouse management processes

Mandatory

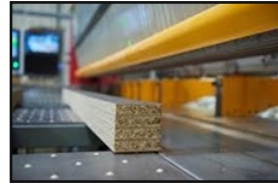
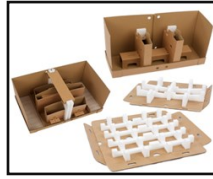
Primary stocking

WAREHOUSE SPECIFIC SETUP

Mandatory

Primary stocking

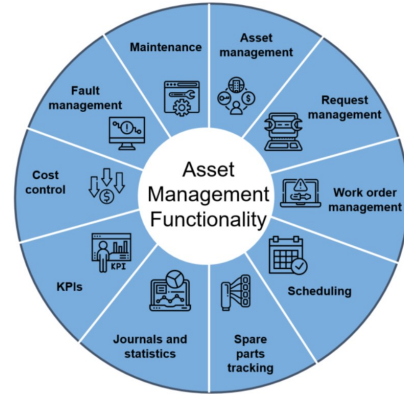
SAMADHAN – Enterprise Solutions



Asset Management

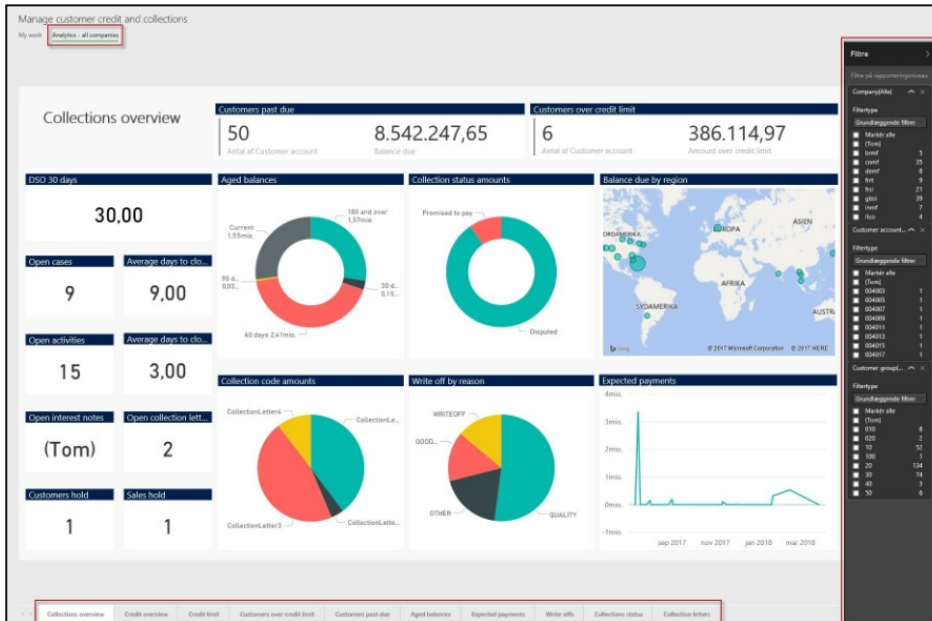
Asset Management is an advanced module for managing assets and maintenance jobs in Dynamics 365 Supply Chain Management. Asset Management integrates seamlessly with several other finance and operations apps.

Asset Management enables you to efficiently manage and service many types of equipment in your company (such as machines, production equipment, and vehicles). Asset Management supports solutions across numerous industries.



Finance & Accounts

Finance and accounts is integrated with operational transactions. It covers all financial transactions which includes– Accounts Receivable, accounts Payable, Cash and Bank transactions, Budgeting, Fixed assets, Taxation, General ledgers etc. . It is capable of handling Multi country localization and Multi currency handling within one environment.





Our customers are counting the benefits, so can you.

Case Study– SAMADHAN Customer

“Having an integrated information system for my business is a dire need, has been my dream and the dream is now realized beyond my expectation; Thanks to SAMADHAN. It has been a delightful experience to work on this project with SAMADHAN, for me and my team.” Nazir Dakri, Managing Director, Dakri Cartons Limited.

Debtors turnaround impacted favorably

“It is not that we did not know who owed us how much and when, we did and were working on it aggressively. But after the ERP came in we found a number of pleasant surprises in this area. Our disputed invoices reduced because we were complying with all requirements of the customer as a design now. The mistakes in invoices VS payment reconciliation were completely eliminated and we were able to link all related aspects of the transactions with ease and enter into any discussion with our customer very confidently. Net to net our number of days of outstanding came down.”

Guarantee delivery reliability

“The system helps us address all related aspects in unified manner and hence our delivery schedule compliance has improved significantly.”

Dramatic reduction in the need for direct supervision

“The solution helps us delegate effectively. Hence the entrepreneurial resources is used at appropriate place rather than getting used in running after the mundane aspects of business.”

Ability to respond to sudden demands of customers has improved

“This has helped us gain few more coveted customers and also retain our existing customers. They love it when we are able to help them out in crisis.”

With ERP in place they can add more units

One of our customers now feels confident to add more Business units in the same or different geography.

Remote connectivity improves work turnaround

The software can be accessed from anywhere using internet. This means that all the sites can use internet to update work progress daily and the travelling executives and sales persons can have a ready access to the data needed by them to conduct the business effectively.

The enormous experience of SAMADHAN is a great help

SAMADHAN is one of the most experienced Microsoft Dynamics 365 partners in India. With over 90+ ERP implementations, we not only know Dynamics 365 in and out, we are also aware of the nuances of a number of industries. The consulting as well the product knowledge is immense and will be very useful.

SAMADHAN – Enterprise Solutions



Microsoft Dynamics

Microsoft Dynamics is a line of integrated, adaptable business management solutions that enables you and your people to make business decisions with greater confidence. Microsoft Dynamics works like familiar Microsoft software such as Microsoft Office, which means less of a learning curve for your people, so they can get up and running quickly and focus on what's most important. And because it is from Microsoft, it easily works with the systems that your company already has implemented. By automating and streamlining financial, customer relationship, and supply chain processes, Microsoft Dynamics brings together people, processes, and technologies, increasing the productivity and effectiveness of your business, and helping you drive business success.

System requirement for Forest Products SAMADHAN ERP on MSD 365 F&O

The solution works on a online mode and can connect multiple locations with one single solution using the secure internet connections.

The user interface can be through a rich client, any browser. Mobile device or tablet with any operating system can connect with the solution using universal app available for iOS, Windows or Android systems.

The solution is cloud ready

You have an option to use the cloud to the extent you like. The cloud option can address manageability of the server and solution to a great extent. It can also lower the entry level investment required and the expenses can be charged to the revenue account.

About SAMADHAN

SAMADHAN is a Microsoft Partner, specializing in ERP implementation, and has expertise in providing state-of-the-art and innovative InfoTech solutions for, Packaging product manufacturing, Wood product manufacturing, Paper and paper product manufacturing Sales and distributions, retail, printing presses and similar industries.

SAMADHAN has many customers in manufacturing business and has taken over 20 man years to learn the specifics of the business, build it into Microsoft Dynamics 365 Business Central and Finance and Operation which has been already tested at multiple countries.

SAMADHAN was set-up in 1989 in India, it is a leading solution provider in India on Microsoft Dynamics 365 F&O and SAP.

The best time to implement Forest Products SAMADHAN ERP in your company is NOW !

- Our solution is ready and cruising
- Suitable for automated as well as the semi automated manufacturing units
- Available on On- premise & hosted model for a low entry level investment
- Works on any device which supports Windows, Android or

Contact Us

Give us a call for more information

Registered office:

903, Mahabir Tower,
Main Road, Ranchi, Jharkhand,
India, 834001

Phone: + 91 651 2331882

Email: info@samadhanindia.com

Get in touch with our Sales Team:

Email:

sales@samadhanindia.com