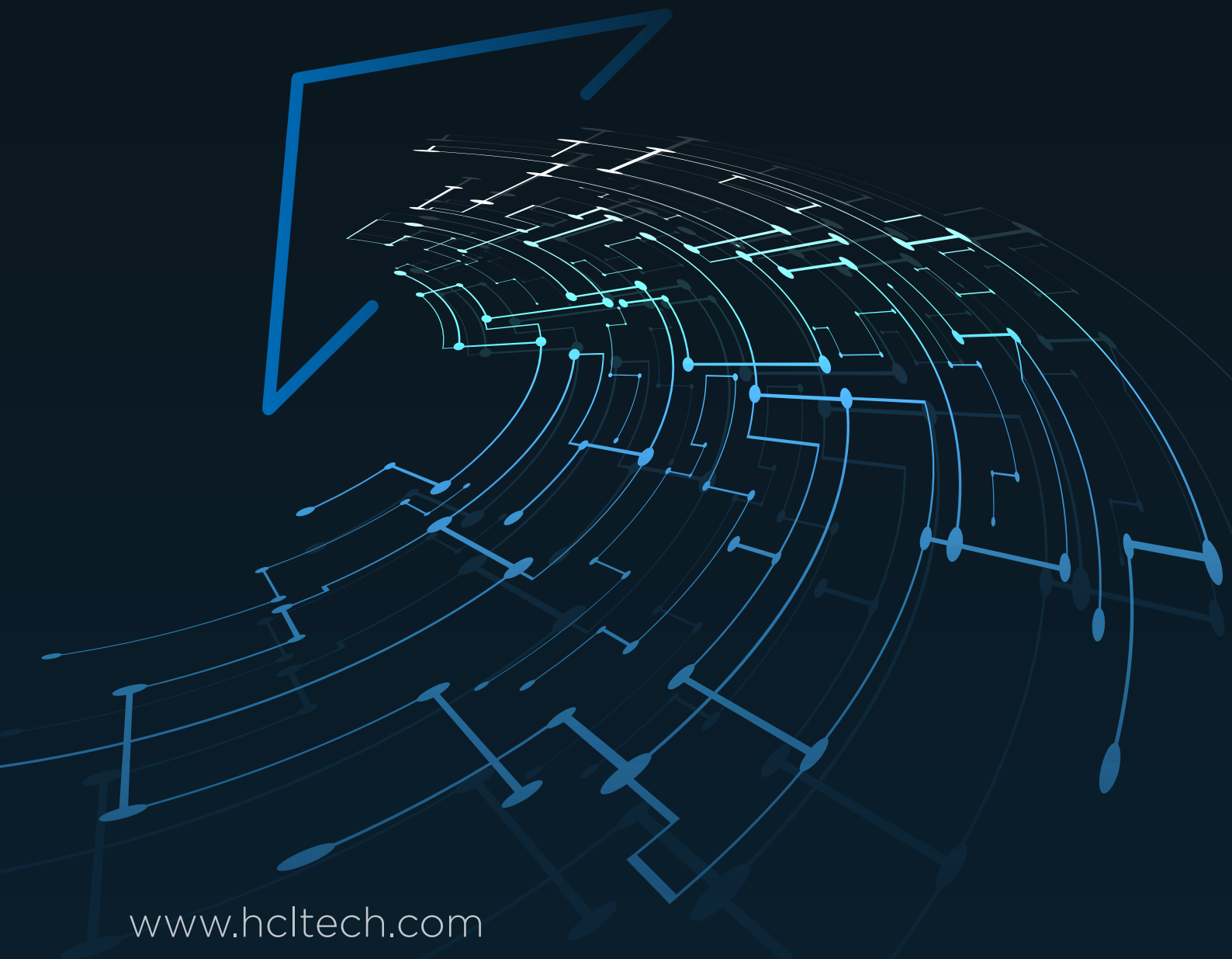


HCL

Unlocking the value of your **SAP data**

with Microsoft Azure Data and
Analytics, and Power Platform









www.hcltech.com

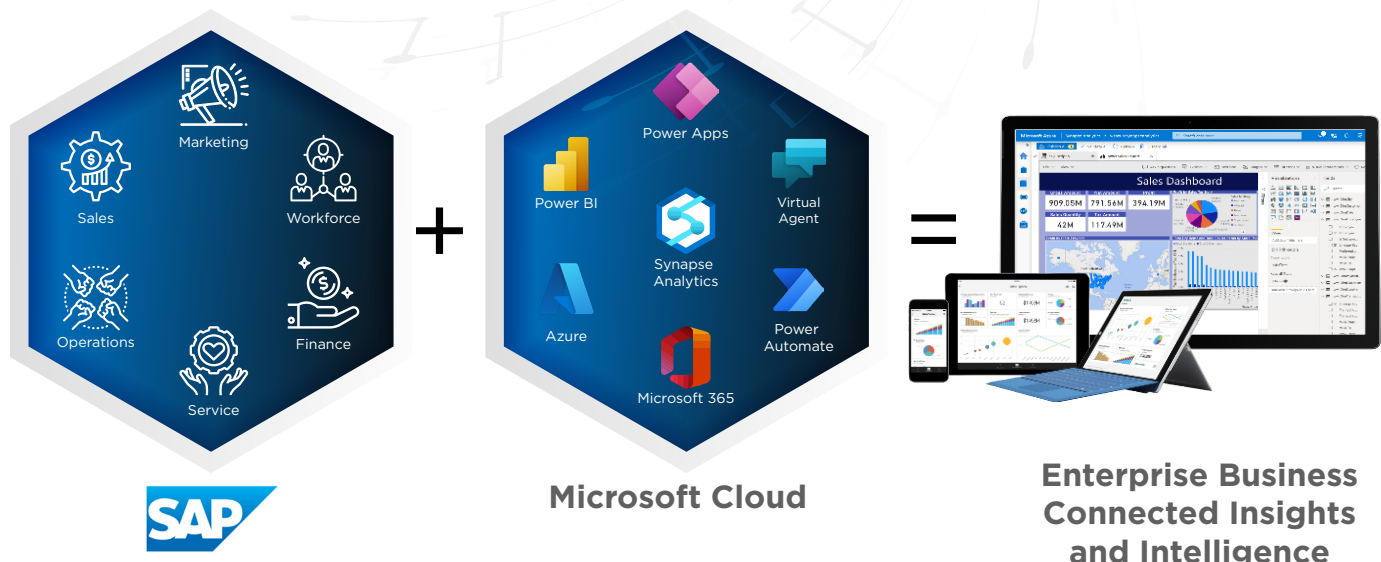
Unlock SAP data with Power Platform to extend SAP capabilities

Modernize and accelerate your analytics, automate, and simplify business processes, interact more intelligently with your data, and build conversational interfaces — all within your existing SAP platform.

Recognize the challenges that are holding your enterprise back

-  Siloed data, limiting real time performance measurement
-  Certified datacenters are expensive and over-provisioned
-  Lack of connected insights across the enterprise; no BI integration
-  Technical debt makes it hard to innovate and deliver business results quickly
-  Traditional ERP systems lacking agility, as well as legacy system maintenance
-  Security and compliance are expensive, with time-consuming “Shadow IT” governance

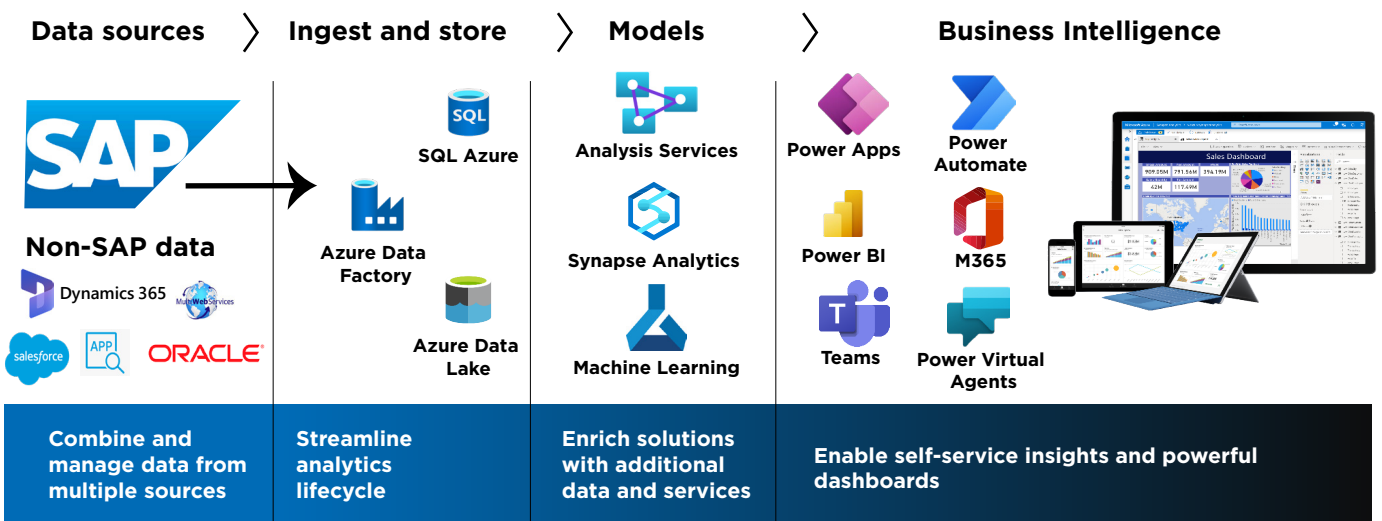
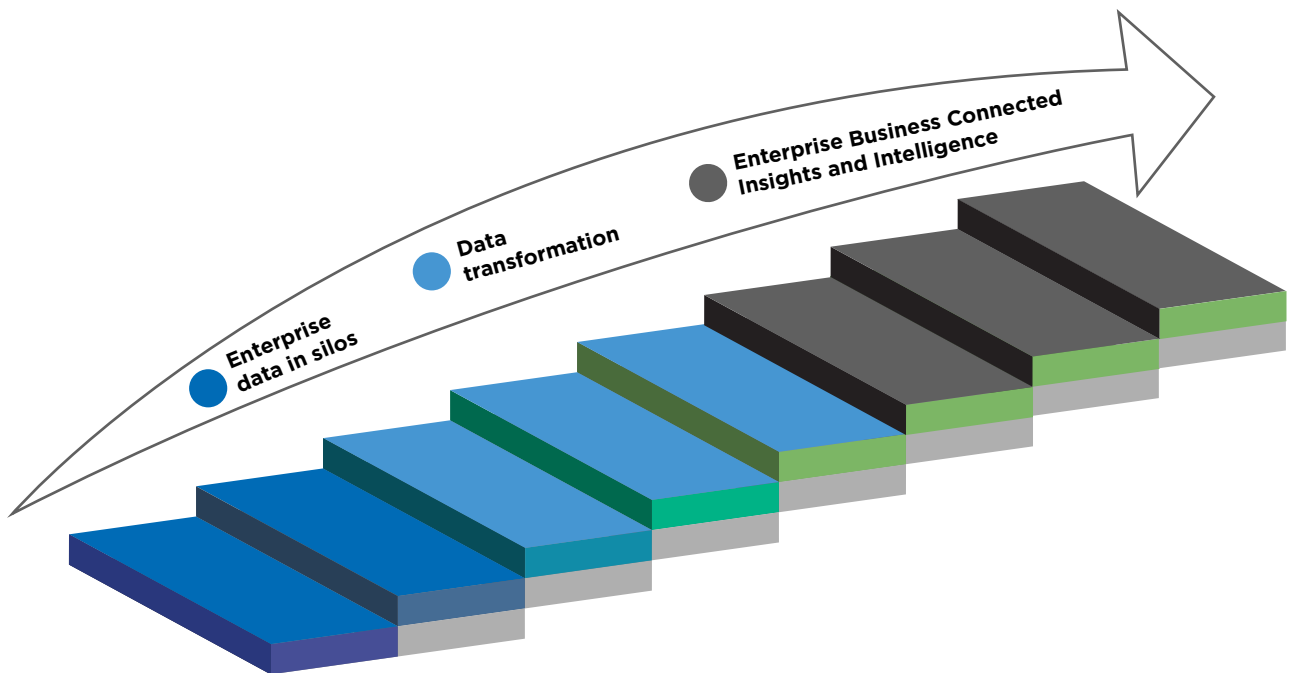
Harness the value of SAP data to enhance your decision making and competitive advantage with - Azure and Power Platform



Transform SAP data into actionable intelligence

Whether you have SAP data/Non-SAP data or any unstructured, semi-structured, or structured data, bring it into the Azure Data Lake coupled with Synapse Analytics, including automation with Power Platform.

Azure Synapse Analytics is a limitless analytics service that brings together data integration, enterprise data warehousing, and big data analytics. Query for 'data on your terms' - at scale. Azure Synapse brings together a unified experience to ingest, explore, prepare, manage, and serve data for immediate business intelligence.



Gain insights from all your data: across data warehouses, data lakes, and big data analytics systems.

Query both relational and non relational data at scale, and easily optimize the performance of all queries with intelligent workload management, workload isolation, and limitless concurrency across SAP and other data stores and sources.



Agility and automation to respond to changing business needs



Gain real-time and predictive insights from unified SAP/non-SAP data



Helps build new applications with velocity



Cloud automation, scale, and OPEX flexibility provide cost efficiency



SAP HANA + Azure services create a platform for continuous innovation



World-class security, compliance, and business continuity

Why Azure with Power Platform?



Ability to continuously innovate



Nurture business resources into citizen developers with low-code/no-code



Empower professional developers with new skills



Lowest support and maintenance costs



Agile IT continuously and effortlessly improves software, with each change in business scenario



Mobile first and Cloud first approach for building business applications

Modernize legacy apps. in the cloud by:



Eliminating security risks

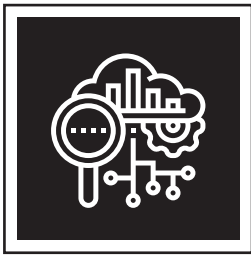


Enhancing automation and integration with a wider IT estate



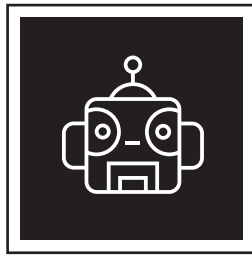
Improving user experience

HCL Power Platform offerings



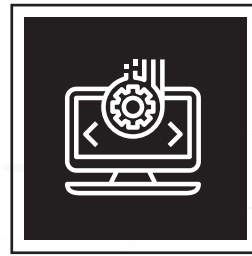
Power Platform CoE

Governance, guardrails, CoE setup



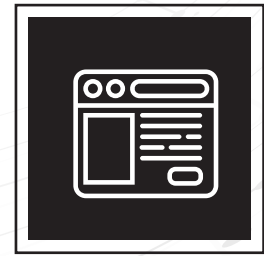
Legacy application modernization

Apps., flows, reports, and bots



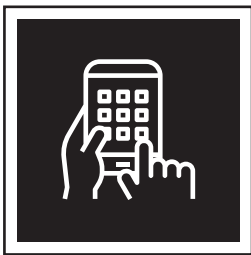
App. Maker enablement

Training citizen developers, community portal, Application onboarding, Maker onboarding



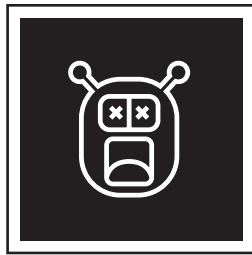
Power Platform Dev. Factory

Build apps., flows, reports, bots - at scale



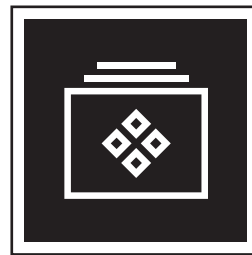
Power Platform Support-as-a-Service

Support ever-evolving platform, and apps. built by everyone



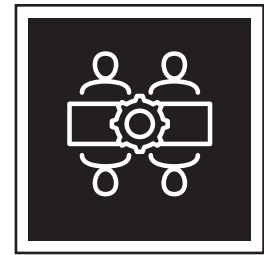
Build complex use cases

RPA, AI, PVA, MI, Azure Bot framework



Bookable activities

AIAD, hackathons, admin. bootcamps, Floor Walker Fusion development/co-creation



Microsoft funded activities

Running catalyst workshops, POC in a Week, Pilot in a Month, customized hacks with business

Why HCL

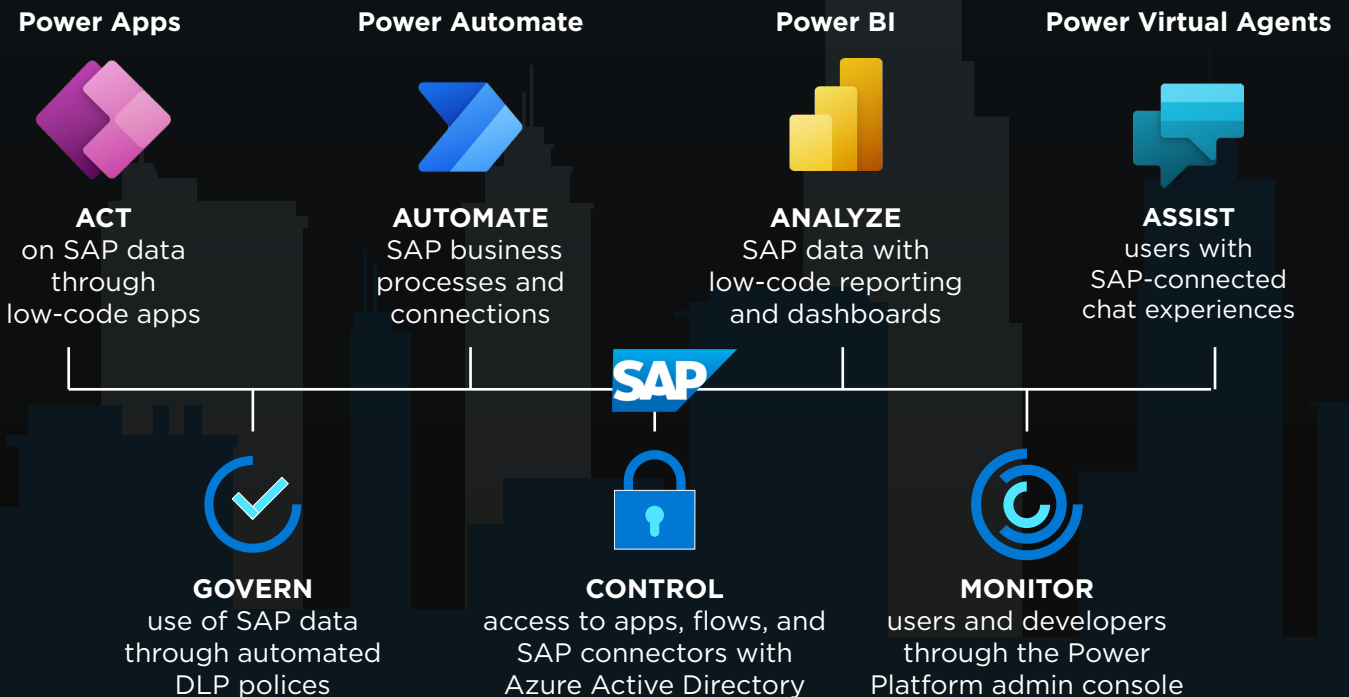
HCL experts implement Microsoft's trusted and integrated cloud capabilities, to empower your teams to deliver consistently.

Strategy, commitment, and alignment

- Strategically partner with Microsoft to accelerate our customer's Digital Transformation Journey.
- Actively collaborate with Microsoft on engagement plans and execute strategic activities.
- Build Microsoft-driven Cloud offerings, capabilities, and capacity to provide the highest-level of customer satisfaction.



HCL competency spans the SAP and Microsoft Platform



Why partner with HCL for end-to-end SAP, Azure, and Power Platform services



Widest scale and better regional coverage

192 GB to 12 TB SAP HANA-certified VM's available worldwide, 50+ regions (more than any other public cloud)

Enterprise-proven Azure platform

Advantage of Azure services such as IoT, Azure Data Lake, Azure ML, and Power BI for business insight

Security and compliance

- 90+ compliance offerings, including tools for GDPR
- Best in class security offerings, including: Azure security center, Azure Sentinel, and Azure AD

Scalability

Scaling out to 60 TB RAM with TDI and up to 120 TB with TDIv5

Largest SAP HANA workloads

Largest SAP HANA workloads - with purpose-build bare metal up to 24 TB for scale up-with Intel Optane persistent memory instances of up to: 9 TB



Azure

Azure Gold Certified Partner

- For cloud platform, productivity, and analytics
- Certified Cloud Service Provider

Cloud competency and scale

- Cloud innovation labs/Center of Excellence (CoE)
- 120k+ Azure-managed virtual machines

Integrated end-to-end offerings

- Azure Professional Services: Consulting
- Managed Migration and 100-in-100 fixed price
- Managed: ElasticOps and FinOps for Azure

SaaS COE

- Life cycle - Consulting to Implementation
- Strong SaaS practice
- 250+ customers

Cloud migration and transformation

- 400 PB managed storage
- 60k databases



Power Platform

Expertise

Every consultant is aligned to a CoE to enhance their expertise across industry and workloads, as well as foster collaboration

Speed-to-value

HCL can solve critical business issues quickly, and with minimal risk with prebuilt industry products and accelerators - built on Microsoft Business Applications

Safe pair of hands

HCL has over 1,220 active customers, 32 percent of whom are enrolled in our reference program. We also have the largest dedicated Microsoft support desk

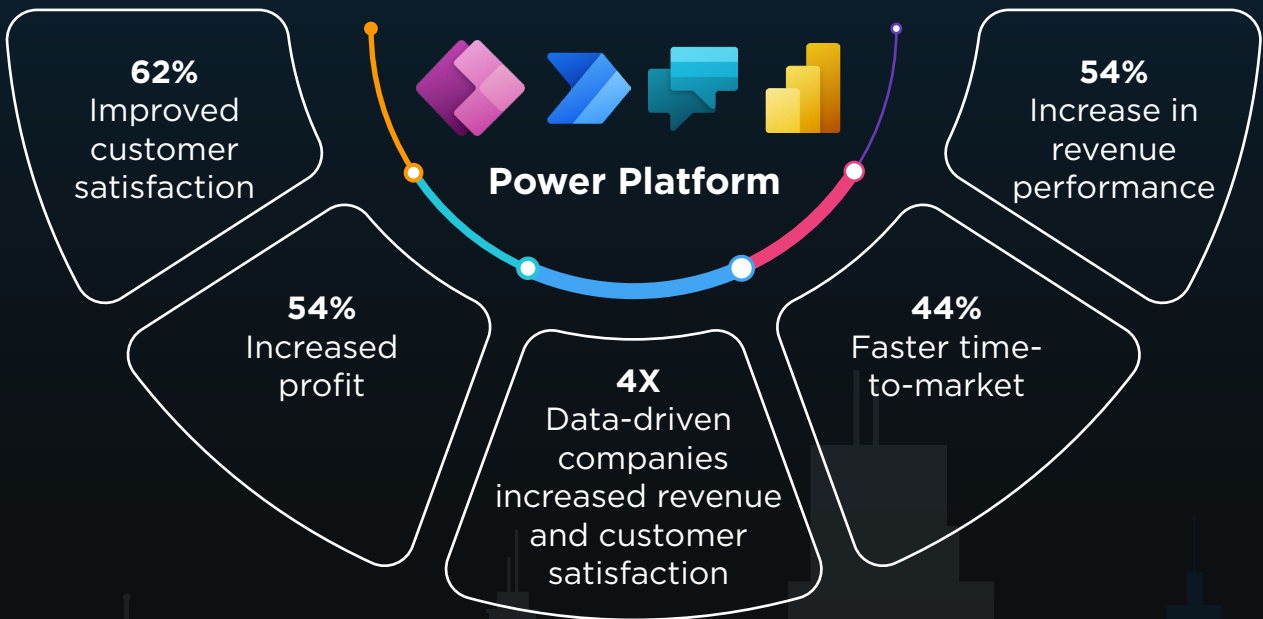
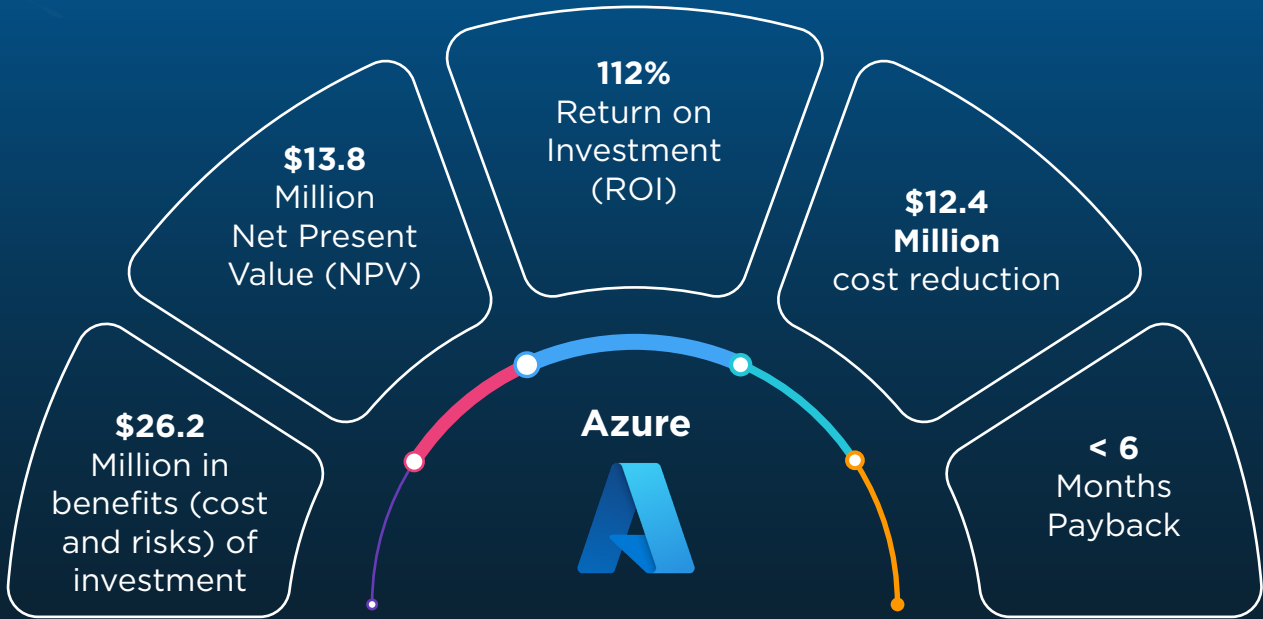
Microsoft partnership

HCL is the largest Microsoft Dynamics 365 partner world-wide

End-to-end services

HCL—with over 2,000 implementations—is the only partner that delivers the full life cycle of cloud services: Professional Services, Advisory, Transformation, Integration, and Management

Key outcomes



Source:

Forrester TEI study, 2021
How to lead a data-driven digital transformation by Harvard Business Review

Connect with our team

Contact us: hclmicrosoftbu@hcl.com



HCL Technologies (HCL) empowers global enterprises with technology for the next decade today. HCL's Mode 1-2-3 strategy, through its deep-domain industry expertise, customer-centricity and entrepreneurial culture of ideapreneurship™ enables businesses to transform into next-gen enterprises.

HCL offers its services and products through three lines of business - IT and Business Services (ITBS), Engineering and R&D Services (ERS), and Products & Platforms (P&P). ITBS enables global enterprises to transform their businesses through offerings in areas of Applications, Infrastructure, Digital Process Operations, and next generation digital transformation solutions. ERS offers engineering services and solutions in all aspects of product development and platform engineering while under P&P. HCL provides modernized software products to global clients for their technology and industry specific requirements. Through its cutting-edge co-innovation labs, global delivery capabilities, and broad global network, HCL delivers holistic services in various industry verticals, categorized under Financial Services, Manufacturing, Technology & Services, Telecom & Media, Retail & CPG, Life Sciences, and Healthcare and Public Services.

As a leading global technology company, HCL takes pride in its diversity, social responsibility, sustainability, and education initiatives. As of 12 months ending on December 31, 2021, HCL has a consolidated revenue of US \$ 11.18 billion and its 197,777 ideapreneurs operate out of 52 countries. For more information, visit www.hcltech.com



www.hcltech.com