

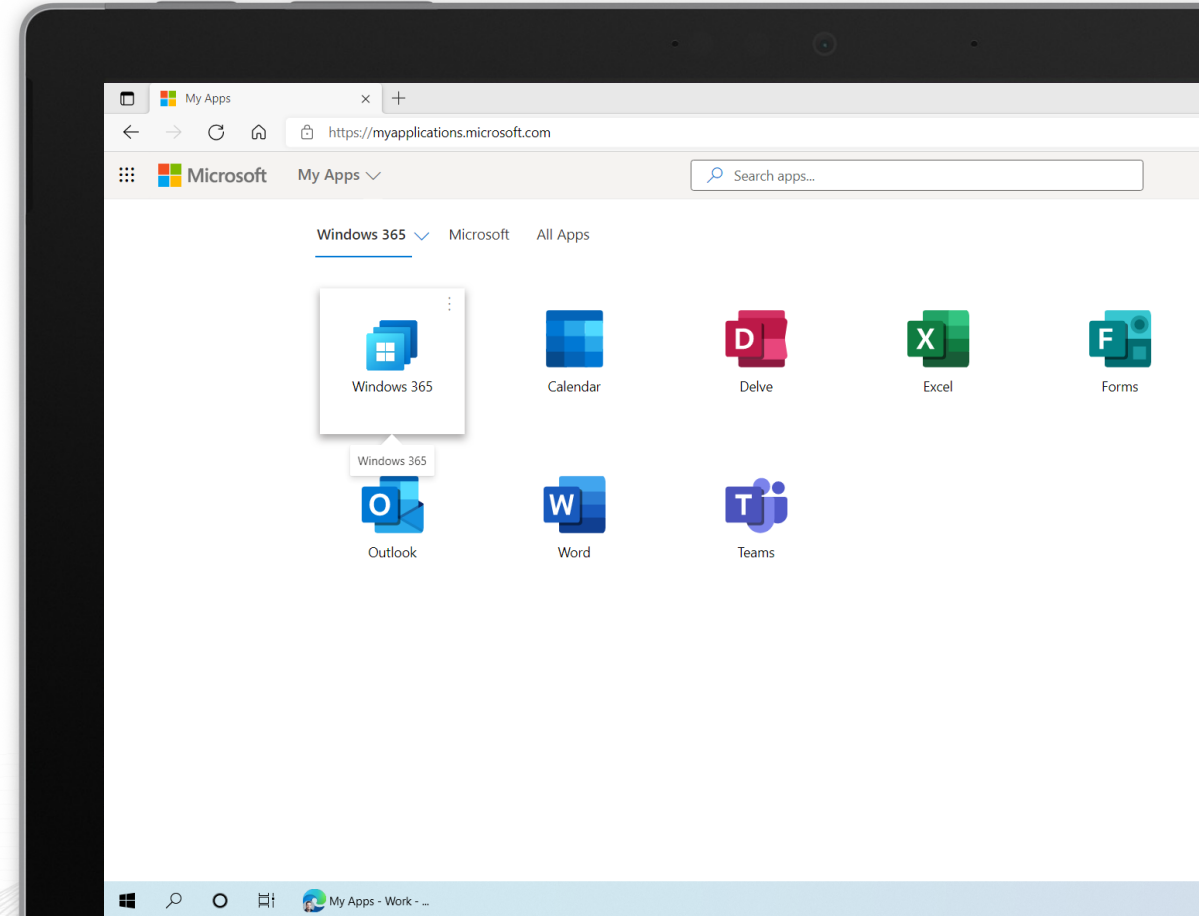
BESPIN GLOBAL
an e& enterprise company

Microsoft Windows 365 Cloud PC



What is Windows 365 Cloud PC

- A Cloud PC represents a cutting-edge solution, offering enhanced availability, optimization, and scalability as a virtual machine. It provides users with a seamless Windows desktop experience and is seamlessly integrated into the Windows 365 service. With Cloud PC, you can access your virtual Windows machine from anywhere, using any device.
- Windows 365 is an innovative cloud-based service that simplifies the creation of a new class of Windows virtual machines, known as Cloud PCs, tailored for individual end users. Each Cloud PC is exclusively designated for a specific user, serving as their personalized Windows device. Windows 365 delivers the full spectrum of productivity, security, and collaboration advantages associated with Microsoft 365.



Windows 365 Cloud PC Scenarios



Security and regulation

Financial Services
Healthcare
Government



Elastic workforce

Mergers and acquisition
Short term employees
Contractor and partner access



Specific employees

BYOD and mobile
Call centers
Branch workers



Specialized workloads

Design and engineering
Legacy apps
Software dev test

Windows 365 Cloud PC– Why this Pilot ? And How we aim to help

Bespin offers a streamlined introduction to Windows 365 Cloud PC through our Pilot program, spanning a period of 5-6 days. Our objective is to furnish you with a clear grasp of how Windows 365 can enhance your business productivity, fortify enterprise security

Solution Onboarding



- Setup Network Connectivity with Azure Subscription for on-prem Datacenter
- Enable Azure AAD Capability for Seamless SSO and Hybrid Join

Simplify management



- Configure Intune Policies for Device.
- Manage windows update and Push Application with Intune

Security and Compliance



- Windows 365 is secure by design, leveraging the power of the cloud and the principles of Zero Trust.
- On-Board Cloud PC for Defender for Endpoint
- Configure Intune Compliance Policy & Device Risk Policies

WINDOWS 365 CLOUD-PC PILOT -OUR DELIVERABLES

- Bespin offers a Windows 365 Cloud PC Pilot Service designed to facilitate your organization's trial and testing of Microsoft's advanced next-generation Virtual Desktop Services. Our service includes deploying a conceptual Windows 365 Cloud PC instance and providing a comprehensive demonstration of its functionality, highlighting its potential to enhance user productivity and bolster security intelligence throughout the enterprise.

SCOPE OF WORK

- Initial Discovery Assessment – Understanding customer’s need around End user productivity and security challenges
- Introduction to Windows 365 , its capabilities and how it can help end user productivity and improve security posture
- Technical enablement
 - Set up Azure and Windows 365 Cloud PC subscription
 - Enable Virtual Network Connectivity with Azure.
 - Local AD Integration.
 - Configure Onboarding and providing policy with Windows 365
 - Demonstrate User On-boarding and end user experience
- Configure Intune Compliance and security Policies
- Demonstrate how to manage Windows 365 and policies
- Provide Technical & Operational Guidance

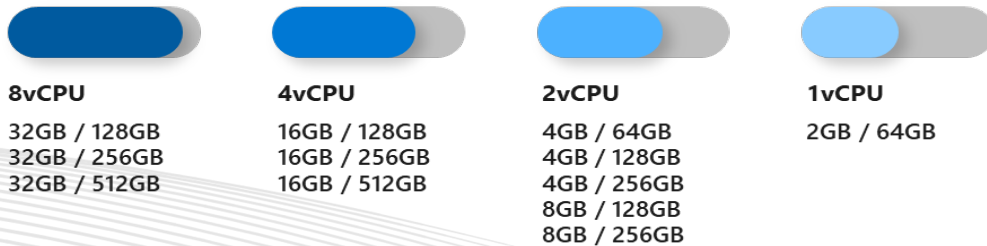
CUSTOMER KEY TAKE-AWAYS

- Get a complete overview of Windows 365 Cloud PC
- A workshop report and recommendations for next steps
- Get a high-level solution plan, roadmap and next steps
- Get Pricing Details for Windows 365 Cloud PC
- Get a high-level W365 Architecture Diagram
- Focus on your core strengths – productivity of your business
- Save on infrastructure and management overheads
- Harness the power of Machine Learning and AI for MS Security.

Windows 365 Features

- Deploy & manage Cloud PCs just like physical PCs
- Flexible licensing options
- Predictable, per-user, per-month pricing Windows 10 and Windows 11 Cloud PCs
- Deploy, manage & secure via MEM & Web Portal
- Supports Hybrid AAD or AADJ

A range of compute and storage configurations — each offered at a predictable monthly per-user price



Access from a variety of devices and operating systems

Form factor

Desktop / Laptop / Tablet / Phone

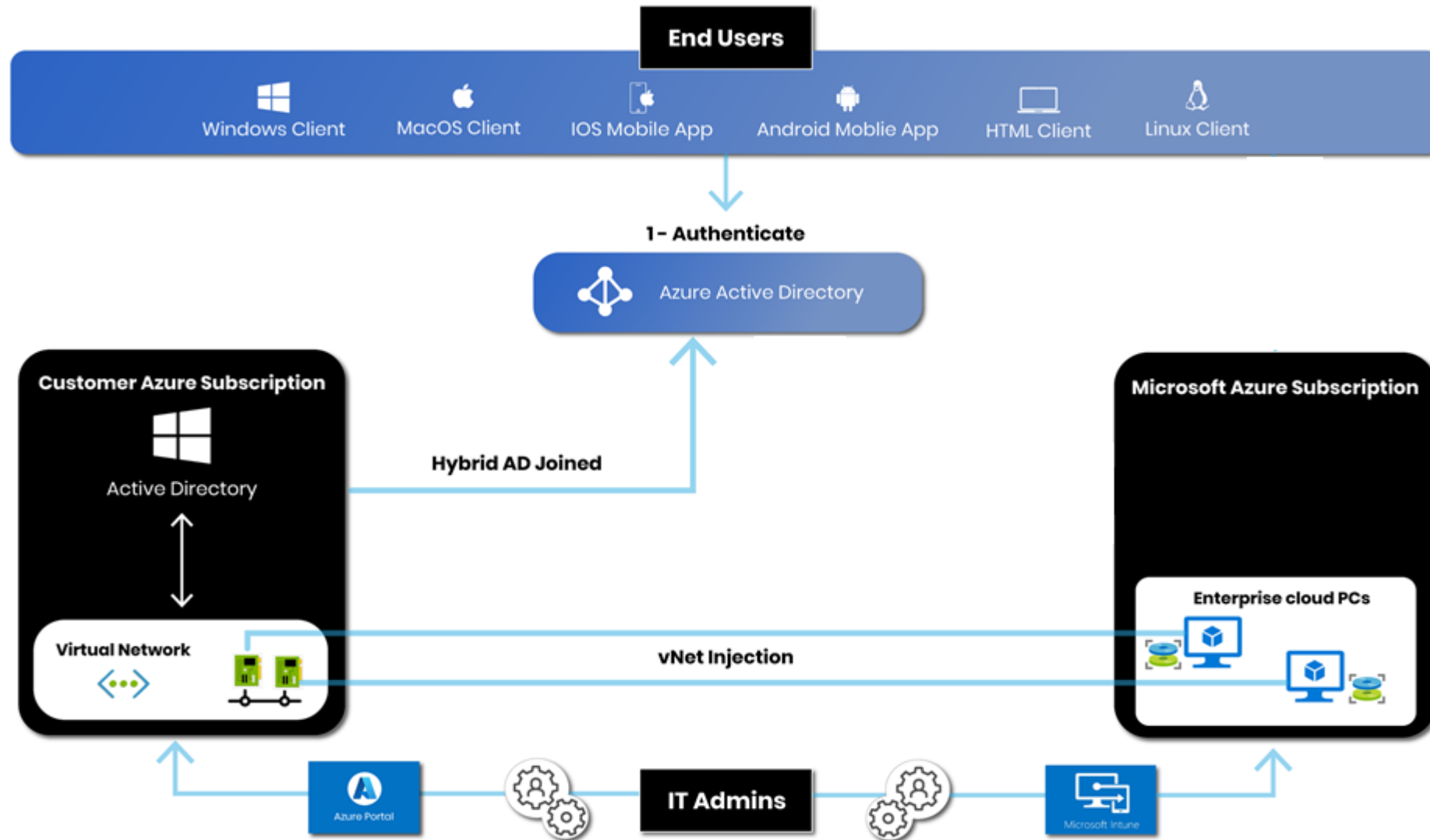
Platform

Windows / Mac, iOS / Android / Linux

Windows 365 SKUs and Sample Use Cases

VM/OS Disk Size	Example Scenarios	Recommended Apps
1 vCPU/2 GB/64 GB	Firstline Workers, Call centers, Education/Training/CRM access	Office light (web-based), Microsoft Edge, OneDrive, lightweight line-of-business app (e.g., call center application—web-apps), Defender support
2 vCPU/4 GB/256 GB 2 vCPU/4 GB/128 GB 2 vCPU/4 GB/64 GB	Mergers and acquisitions, Short-term and seasonal, Customer Services, Bring-Your-Own-PC, Work from home	Microsoft 365 Apps, Microsoft Teams (audio-only), Outlook, Excel, PowerPoint, OneDrive, Adobe Reader, Edge, Line-of-business app(s), Defender support
2 vCPU/8 GB/256 GB 2 vCPU/8 GB /128 GB	Bring-Your-Own-PC, Work from home, Market researchers, Government, Consultants	Microsoft 365 Apps, Microsoft Teams, Outlook, Excel, Access, PowerPoint, OneDrive, Adobe Reader, Edge, Line-of-business app(s), Defender support
4 vCPU/16 GB/512 GB 4 vCPU /16 GB /256 GB 4 vCPU /16 GB /128 GB	Finance, Government, Consultants, Healthcare services, Bring-Your-Own-PC, Work from home	Microsoft 365 Apps, Microsoft Teams, Outlook, Excel, Access, PowerPoint, Power BI, Dynamics 365, OneDrive, Adobe Reader, Edge, Line-of-business app(s), Defender support
8 vCPU /32 GB /512 GB 8 vCPU /32 GB /256 GB 8 vCPU /32 GB /128 GB	Software developers, Engineers, Content creators, Design and engineering workstations	Microsoft 365 Apps, Microsoft Teams, Outlook, Access, OneDrive, Adobe Reader, Edge, Power BI, Visual Studio Code, Line-of-business app(s), Defender support

Windows 365 Technical Architect



Windows 365 Deployment Overview

- Understand the customer's current environment
- Explore customer's identity and endpoint management capabilities and design the recommended architecture
- Perform persona matching for W365
- Activate Windows 365 Licenses.
- Assign Azure Subscription for required tenant
- Setup Azure Resources Like Vnet, connectivity with on-prem Network over Site-to-site VPN
- Configured Active Directory with AAD Hybrid Join enabled
- Setup Windows 365 as per organization requirement
- Perform Testing and UAT

Windows 365 Pre-requisites

- Azure subscription with vNet configuration
- Azure vNet Connectivity to access Active Directory domain controller (i.e, a PC can be joined to the domain).
- Custom DNS servers, necessary routing, and firewall access to AD.
- Azure AD Connect configured and running within Active Directory with AAD Hybrid Join enabled
- Intune enabled on Azure AD tenant (each cloud PC user needs, and Intune license assigned)
- Admin setting up the initial deployment must be an Owner of this Azure subscription
- Azure AD DS is NOT supported

BESPIN GLOBAL

an **e&enterprise** company

Thank You

Connect with us on
www.bespinglobal.ae
info@bespinglobal.ae

