

minsait

An Indra company



RAIL

AI innovation
from trust



Why RAIL?

Companies must bet on exploiting all the possibilities that AI offers and they must be aware and **responsible** for how they use it and establish the mechanisms that allow them **to scale** and evaluate its real **impact** .

Innovation from trust

minsaït



Responsible



Ambitious



Integrated



Leaded



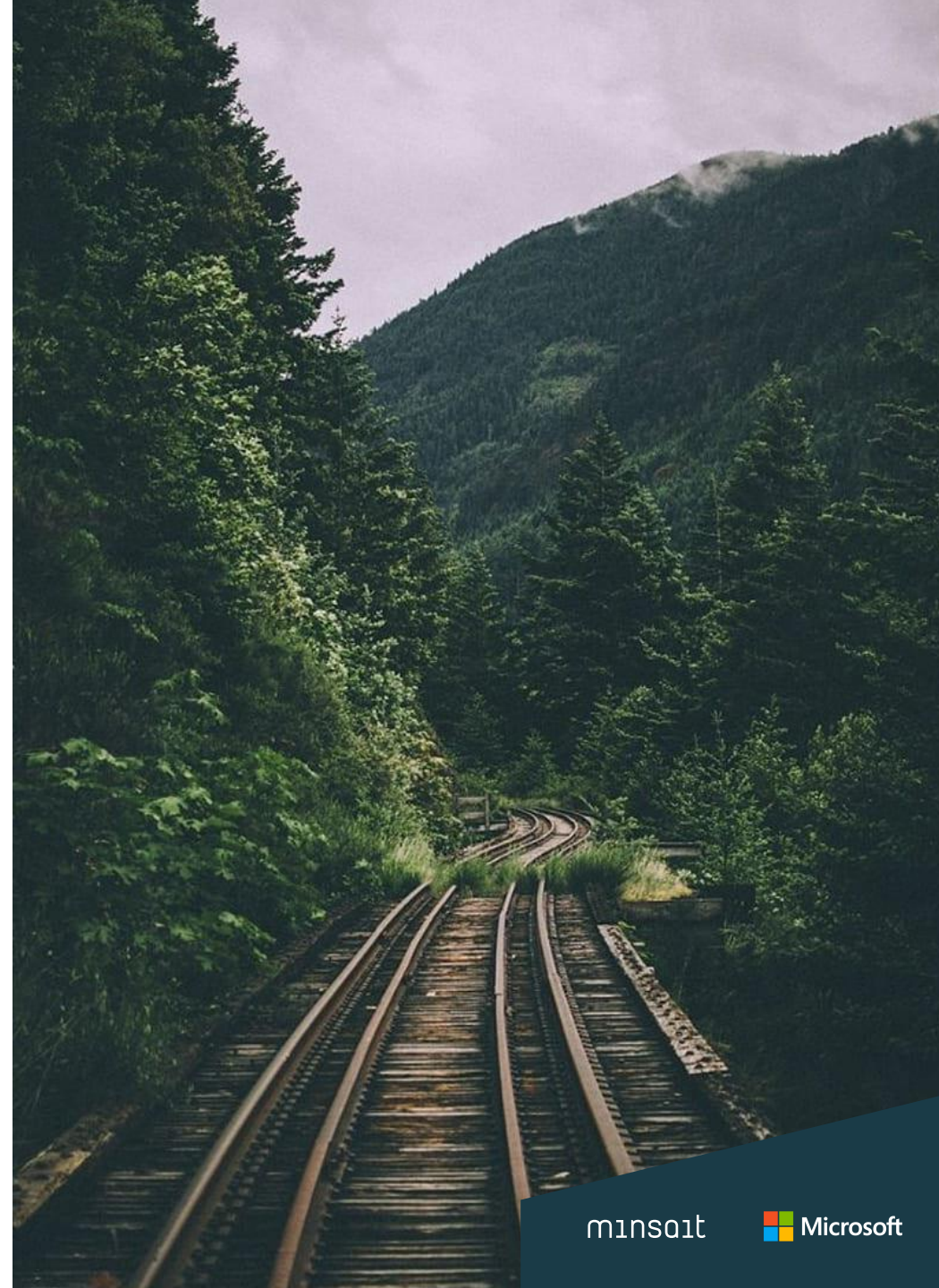
Keys

Build ... How ?

Drivers

Let's start

minsaït



RAIL

Responsible

- Responsible to society: An **ethical** and **explainable AI** (e²)
- Responsible with the environment: **Sustainable** . An optimized and aware “Green” AI
- Financially Responsible: **FinOps**

Ambitious

- **Without limits** : An AI that combines the most traditional analytics with the most innovative possibilities
- **Differential**: An AI that can really make differences with the “before”, generating **impact**
- **Measurable** : The impact generated must be tangible, with its own ROI (Return on Intelligence)

Integrated

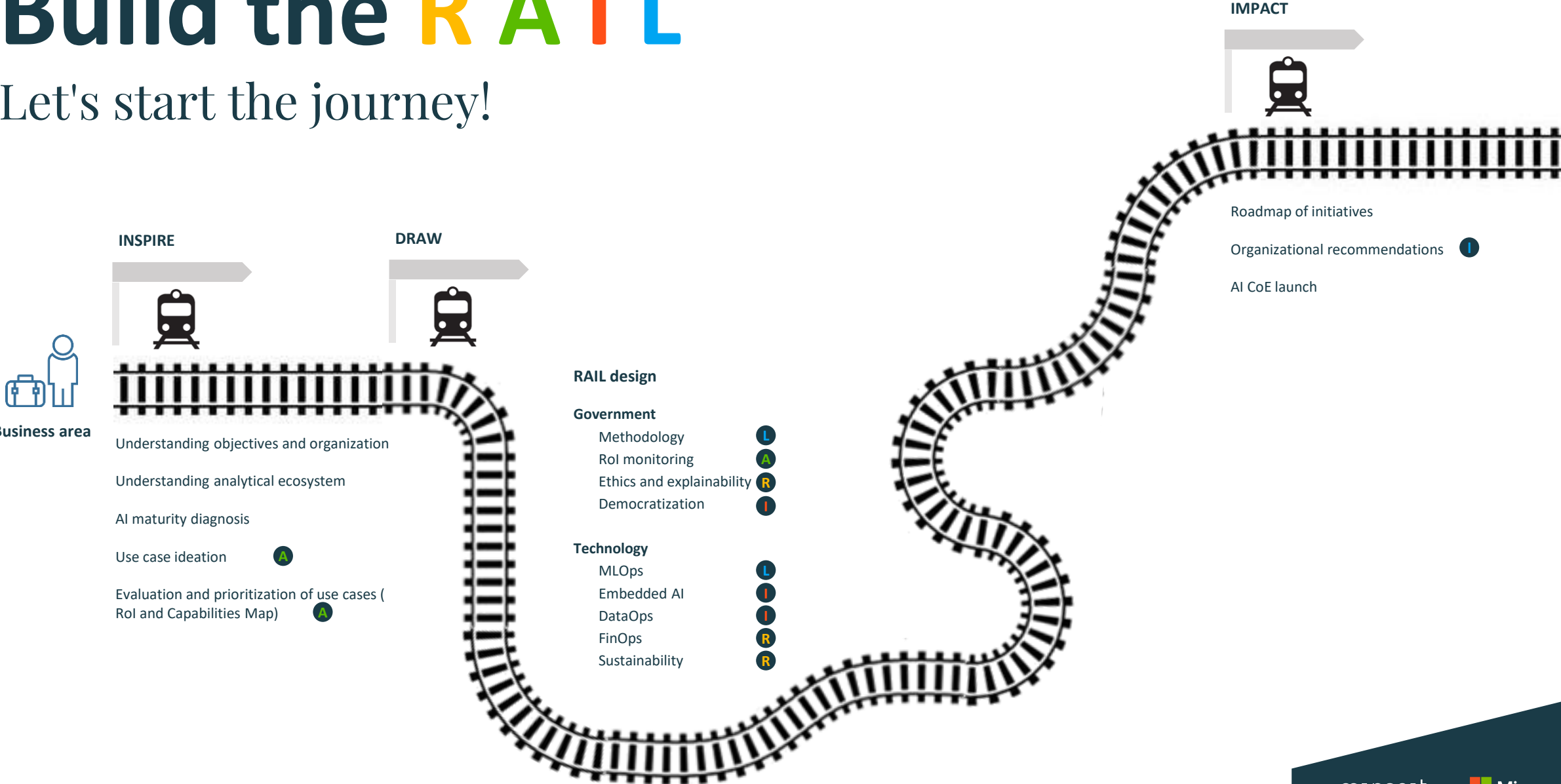
- **Embedded** in the current most operational ecosystem, why not?
- **Integrated** with the current Data & AI ecosystem: **DataOps**
- Integrated in the organization: **Democratization** of analytics. Dissemination and culture

Leaded

- Governed from a technological point of view: **MLOps** Framework
- Governed from a methodological point of view: Common **itineraries** and dynamics
- Governed from an organizational point of view: New **roles** that drive and monitor AI activity

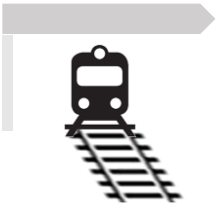
Build the RAIL

Let's start the journey!



Build the RAIL

INSPIRE



AI maturity diagnosis

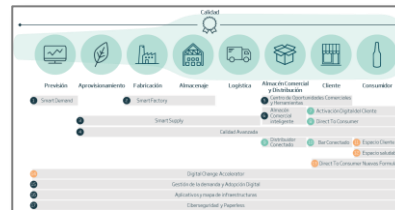


Diagnosis by areas of the maturity level of application and management of AI

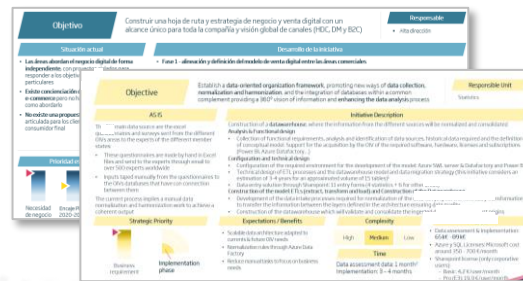


Own methodology: Ascendant
RAIL Checklist

Use Case Sheets

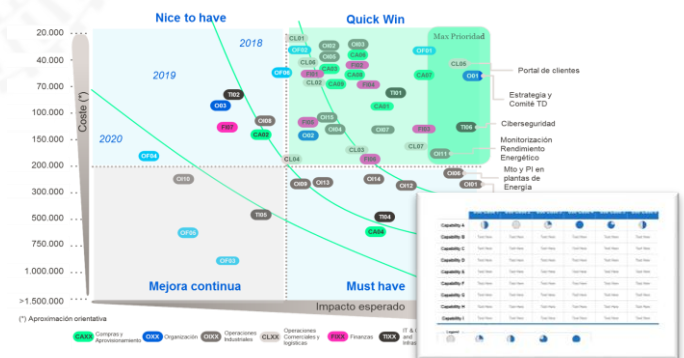


Initial list of use cases by area to cover needs and challenges



Detailed description sheets of AI use cases, including their objectives, starting situation, description, economic estimate and benefits/ease of implementation

Evaluation and prioritization of Use Cases



Characterization and prioritization of use cases based on ease of implementation (efforts required and feasibility) and expected impact (financial, operational and intangible)

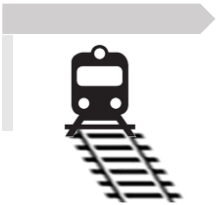
Map of necessary capabilities associated with use cases



RoI - Return on Intelligence

Build the RAIL

INSPIRE



AI maturity diagnosis

Use Case Sheets

Evaluation and prioritization of Use Cases

Organizing diagnosis and evaluation by **AI- Class** and its **subcategories**:

Analytical basis



- Optimization and process mining
- Forecasting and predictive
- Segmentation and recommenders

Cognitive Perception



- Texts:
 - Creation, analysis and transformation of texts
 - Question resolution
- Images:
 - computer Vision for image analysis

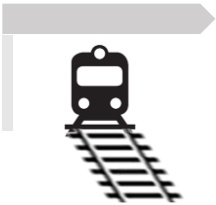
EmbryoIA



- Autonomous mobility
- Federated Learning
- Quantum computing
- Others

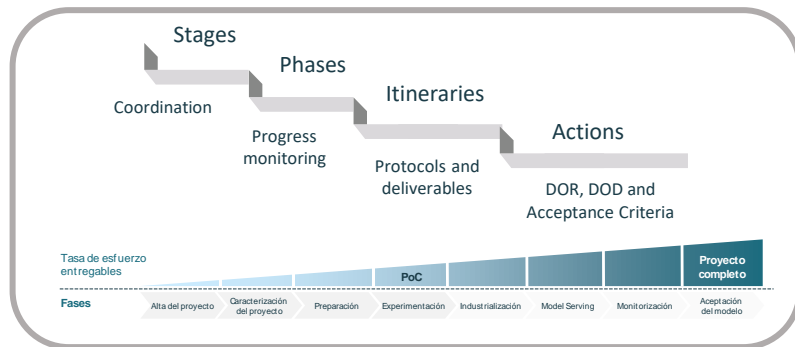
Build the RAIL

DRAW



Government

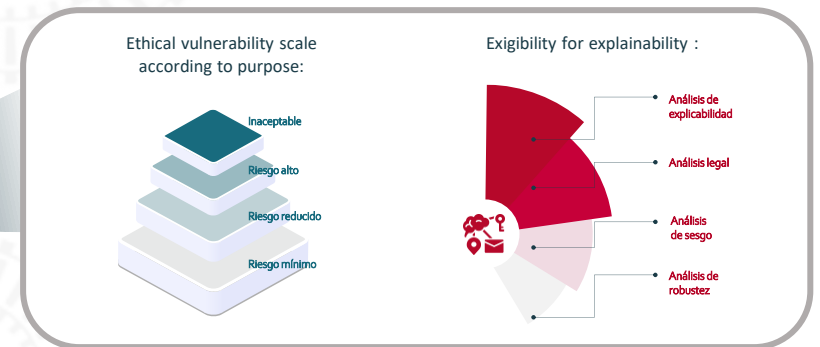
1 Methodology



Aim:
Design the government RAIL



3 Ethics and explainability



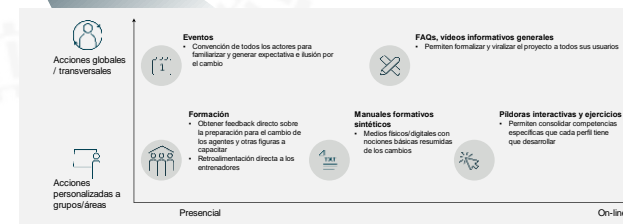
2 Rol

- **Model metrics** (accuracy, performance and opportunity cost)
- **Model portfolio metrics** (aggregate view, resource distribution, dependencies, cost/benefit ratio and rankings)
- **Global return** (economic impact and monitoring of strategic objectives)



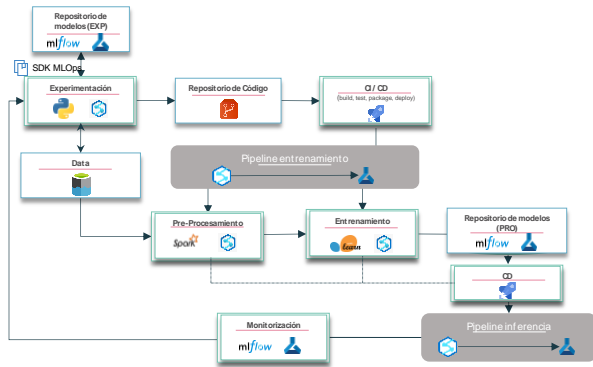
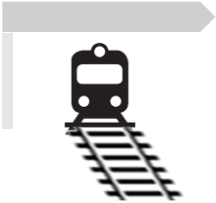
4 Democratization

- **Dissemination model** according to the target profiles and type of content: Events, FAQs, Training, Manuals, Information pills, ...
- **Change Management strategy and plan** that, based on the diagnosis of the change, includes the necessary communication, training and support activities



Build the RAIL

DRAW



3 become 1!! MLOps Framework + DataOps + Embedded AI

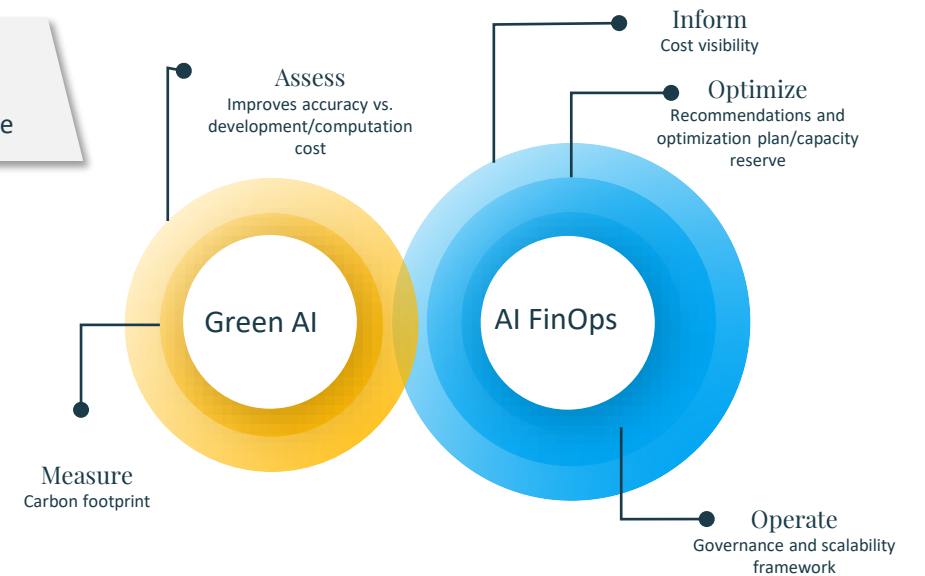
- Architecture that supports diverse environments
- *Feature Store* for data set management
- Experimentation area
- MLOps components (archetypes, libraries, model registry, ...) that manage the life cycle through pipelines
- *model Serving*, for batch execution or integration of online AI and streaming

Technology

Aim:
Design the technological RAIL
Exploiting the possibilities offered by Azure

Analytical ECOSYSTEM

RESPONSIBLE Analytics

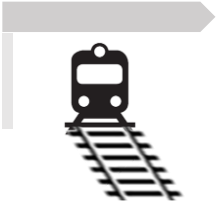


Double Responsibility: Sustainability + FinOps

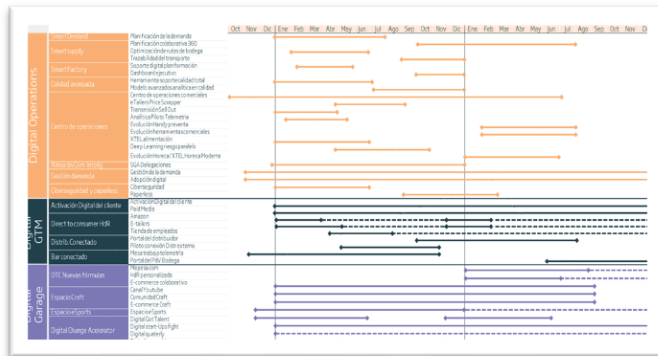


Build the RAIL

IMPACT



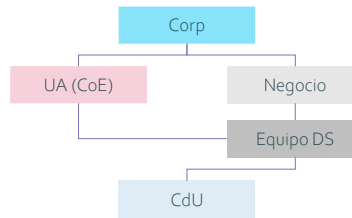
Roadmap AI initiatives



roadmap : scheduling of the initiatives and use cases for their implementation, with a focus on the return to be achieved in each step and on the monitoring of their subsequent implementation

Organizational Recommendations and AI CoE

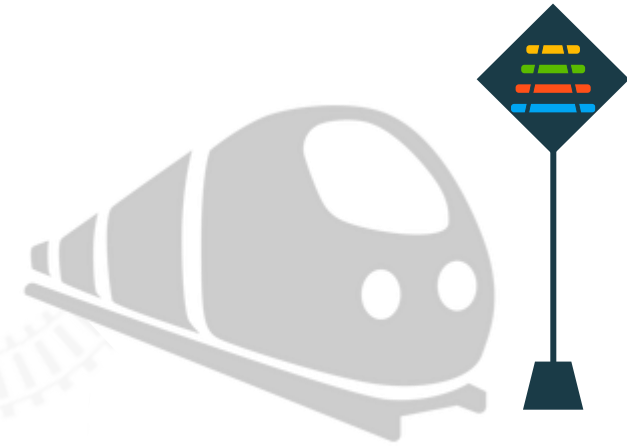
Recommendations for establishing an appropriate organizational model for AI governance



Equipo de gobierno	Capacitación	Funciones	Creación		Implementación	
			Identificación de casos de uso	Preparación de casos de uso	Desarrollo de casos de uso	Implementación y despliegue
Dirección de Analítica	Dominio de técnicas y algoritmos en profundidad y tecnologías relacionadas de alto nivel	Coordinación de la estructura de gobierno; Inicialidad sobre el desarrollo de análisis completos y su ciclo de vida	C	A	A	R
Dirección de Gobierno del Dato	Idoneidad para el uso de datos de la compañía, su accesibilidad y calidad, así como dominios de sus plataformas	Aseguramiento de calidad de los datos, disponibilidad y trazabilidad	C	R	R	C
Dirección de Innovación	Dominio de las herramientas BI y la Plataforma de Analítica	Supervisión de los modelos y aseguramiento del cumplimiento de las funciones	C	C	R	R
Áreas de Negocio	Flujo de directiva de cada área, experiencia, visión estratégica	Proyecto de casos de uso alineados con sus objetivos estratégicos	R	R	R	R
TI y Arquitectura	Dominio técnico de plataformas analíticas y arquitecturas del dato de la compañía	Gobierno de los sistemas soporte de análisis; Operación de herramientas técnicas para gobierno	C	R	R	C
RPH	Idoneidad y capacidad de ejecución en los procesos de asignación de recursos de la inteligencia	Suministro de datos para el gobierno (consumo PTEs, coste humano, ...)	C	C	C	C
DPO + Cumplimiento Normativo	Dominio de obligaciones y riesgos digitales; Dominio de normativas aplicables al tratamiento de datos y algoritmos	Aseguramiento de privacidad, anonimidad, seguridad e integridad de activos analíticos (datos, modelos)	C	R	R	C

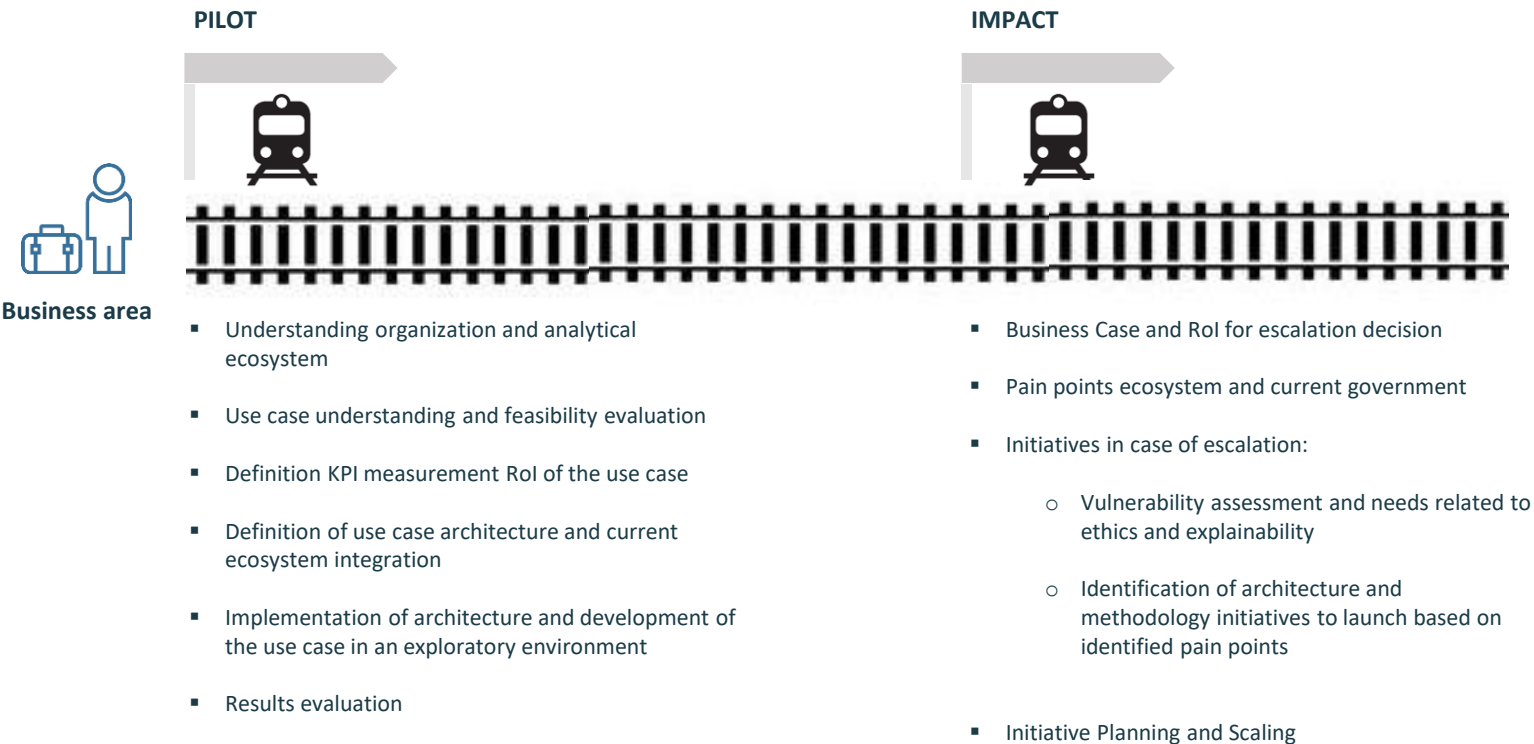
Dynamics and responsibilities for the management of each phase of the AI cycle

Creation of a central entity that manages and monitors the AI initiatives and analytical resources of the areas at a global level (IA CoE), but also accelerates adoption



Build the fast RAIL

But, what if I need high speed ?



RAIL Drivers



...with the best talent

AI Architect
Study, design and sizing of the systems architecture that will make up the different environments for the AI application (development, integration, pre-production, production). Design of data flows and integration of different components.

AI Experts (Pool)
Experts in the different disciplines of Artificial Intelligence considered (AI Class). They will collaborate in the evaluation of initiatives and estimation.



Manager

Most responsible for the team, ensuring compliance with objectives, commitments and quality. Leader of the Discovery dynamics and preparation of the Roadmap.



Business Partner

Ensures practical application to the business, guaranteeing the fit of the RAIL model with the needs of the company. Ensures focus on the company's sectoral characteristics and organizational particularities throughout the development of the project.



AI Governance expert

Transfers the Artificial Intelligence governance vision to the execution of the project, leading the As Is analysis of the organization and its To Be design, as well as the methodology and alignment with explainability and ethics.



minsoit

An Indra company



Microsoft

minsait

Mark Making the way forward

An Indra company