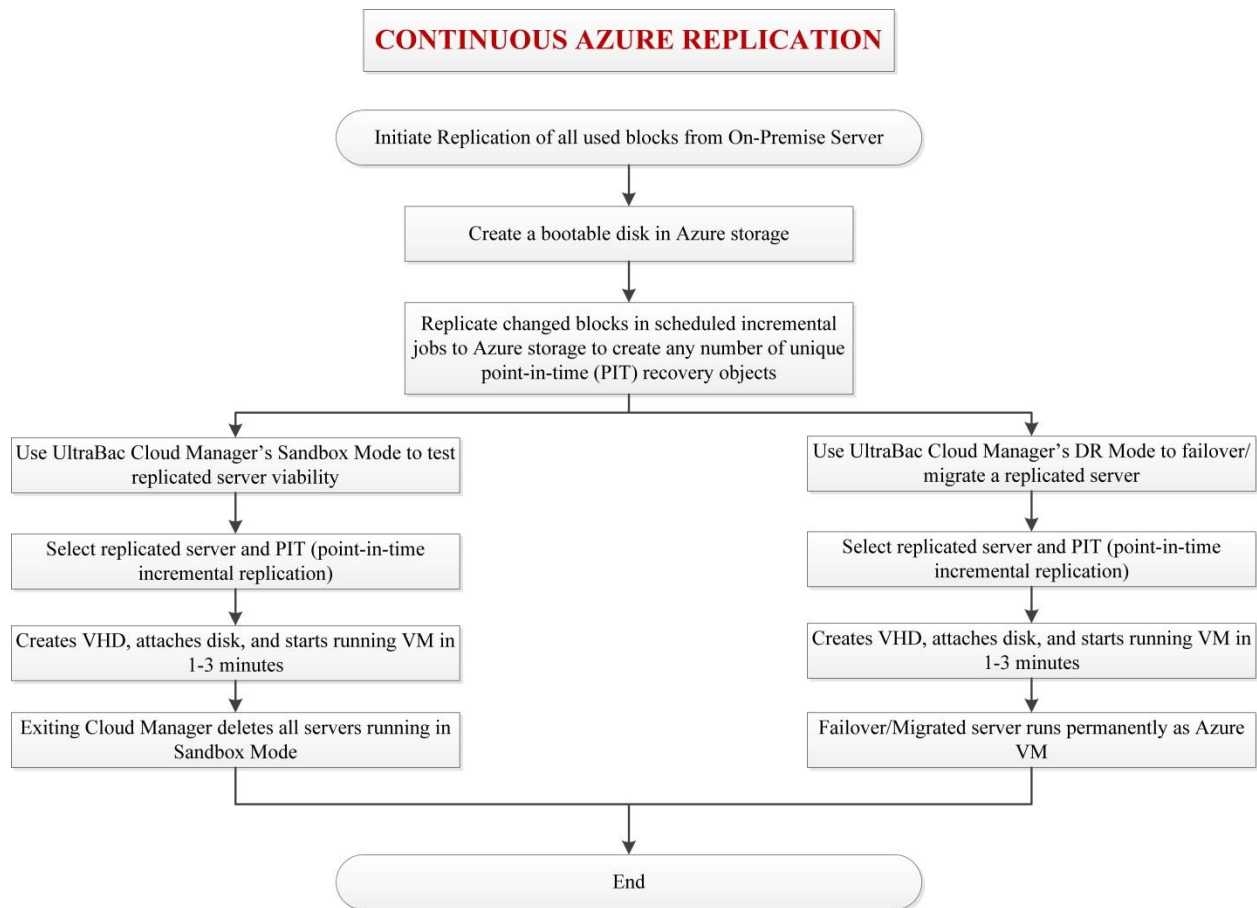


## UltraBac's 3-in-1 Ultimate Disaster Recovery Protection

The following three diagrams illustrate how UltraBac, in a one pass backup/replication operation, can provide one, two, or three levels of concurrent Backup & Replication for the Ultimate in Disaster Recovery Protection. With UltraBac's Azure Marketplace solution, users can implement any combination of Continuous Replication to Microsoft's Azure Cloud with Near Instant Failover; Continuous On-Prem Replication to Hyper-V with Near Instant Failover; and On-Prem Image Backup with Dissimilar Hardware Restore for lightning fast Bare Metal Recoveries to give their organization multiple levels of Business Continuity Protection unavailable until now.

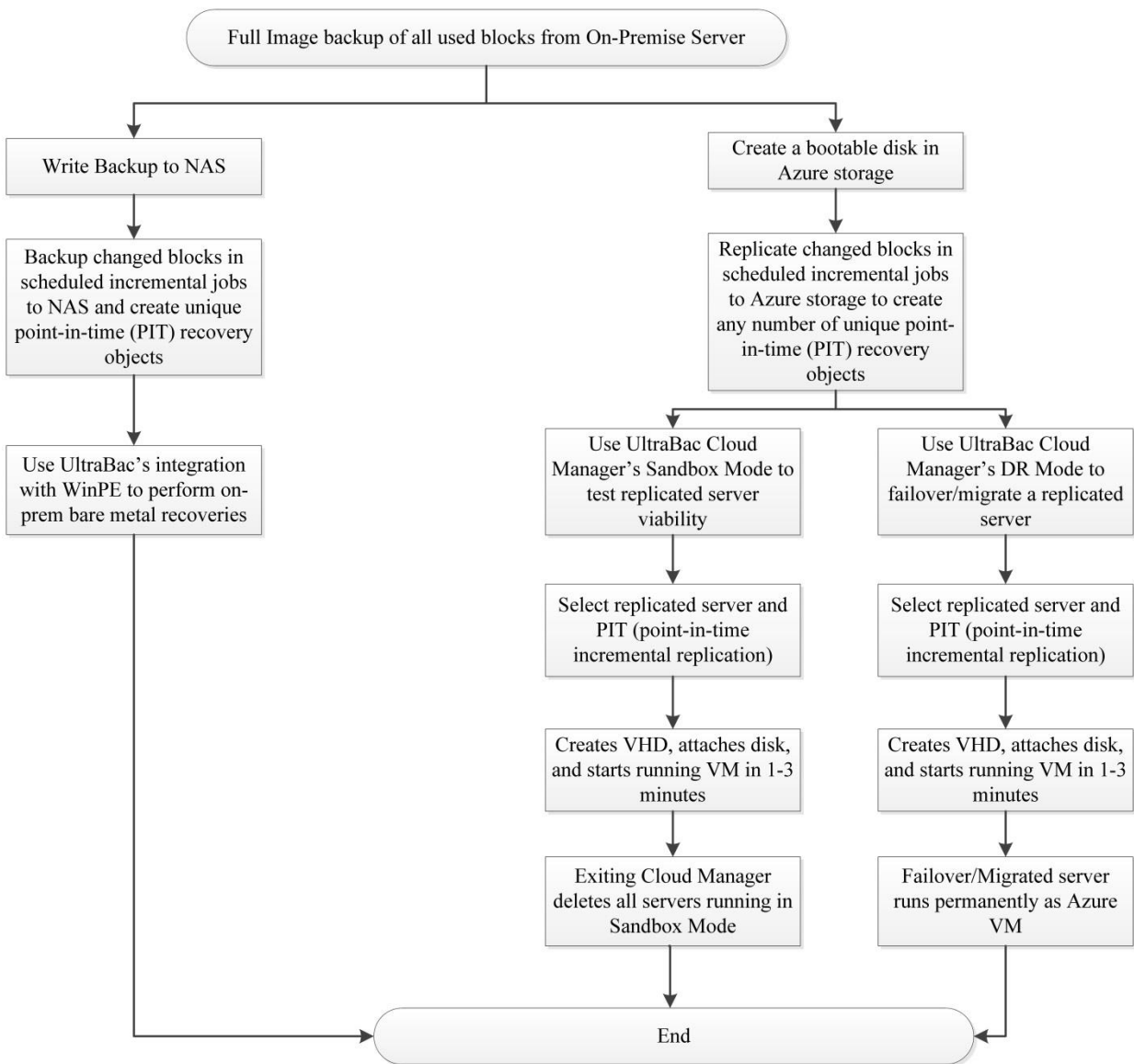
### LEVEL 1:



## UltraBac's 3-in-1 Ultimate Disaster Recovery Protection

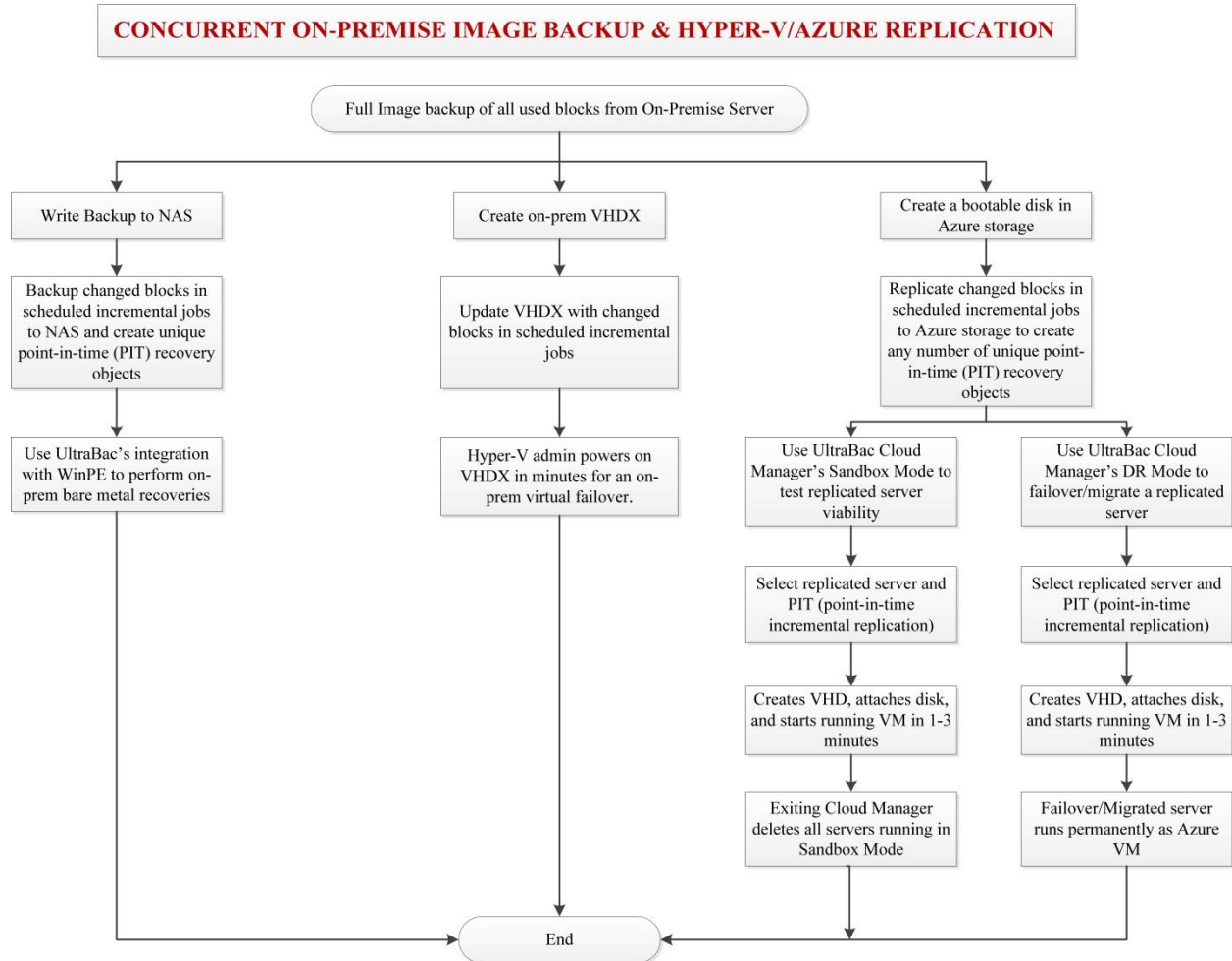
**LEVEL 2:**

**CONCURRENT ON-PREMISE IMAGE BACKUP & AZURE REPLICATION**



## UltraBac's 3-in-1 Ultimate Disaster Recovery Protection

### LEVEL 3:



### FOOTNOTES:

- Full image backup by partition or disk. An intelligent process where only disk blocks marked in-use are backed up and file types that cannot be restored are skipped (e.g. page & hibernation files).
- Incremental image backup captures the changed blocks on disk between each replication/backup.
- PIT is an abbreviation for "Point-in-Time" which refers to each unique incremental replication/backup.
- On-Prem is an abbreviation for "On-Premise" or onsite. This refers to physical & virtual machines that are being operated at an organization's location.

## UltraBac's 3-in-1 Ultimate Disaster Recovery Protection

(Continued)

- Azure is Microsoft's Cloud.
- Hyper-V is a Microsoft virtual host server running 2 or more VMs.
- VM is an abbreviation for "Virtual Machine" which in this context refers to a Microsoft server.
- VHD/VHDX are Microsoft bootable virtual disk formats.
- UltraBac's IP is the onsite software (Intellectual Property) that performs the image backup & Azure/Hyper-V replication.
- UltraBac Cloud Manager is the software used from any Windows machine to manage replicated servers to either test in Sandbox Mode or to failover/migrate in DR Mode.
- WinPE is a special Microsoft operating system that end-users can use to temporarily boot a machine.
- Bare Metal Recovery (BMR) refers to booting a failed machine using WinPE on a USB/CD which is integrated with UltraBac. Once booted, connect to storage, select the required PIT, and initiate an image restore to recover the machine back to a 100% operating condition.
- NAS is an abbreviation for "Networked Attached Storage" and is simply used as an example in this diagram.