

Drive savings on  
emissions, energy  
use and costs with  
**emissions.AI**

**OPEX**  
an ERM Group company

# The way that carbon intensive facilities are operated can affect operational emissions and costs by up to 7.5% every year.

7.5%

When it comes to unlocking this prize, companies face similar challenges; opportunities are often hidden and they cannot be readily seen, quantified, or validated.

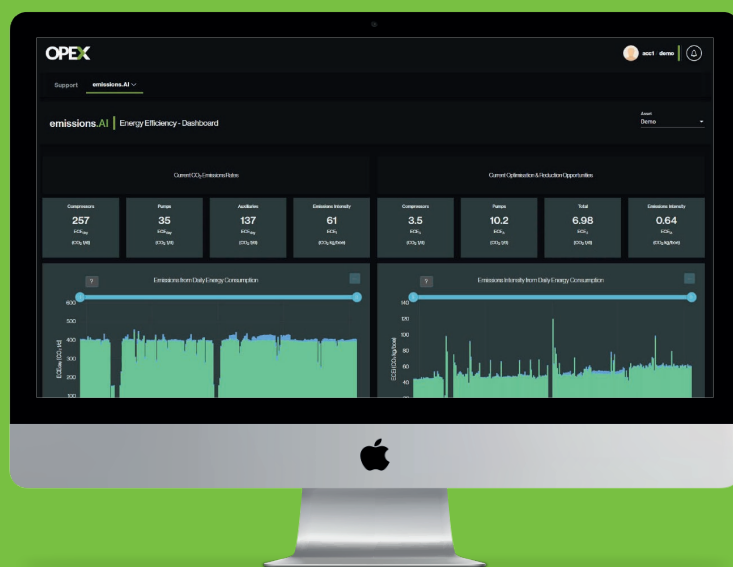
This can often be as a result of the following limitations:

- lack of granular and frequent emissions data at process and equipment level
- information, insights and intelligence
- tools and techniques available



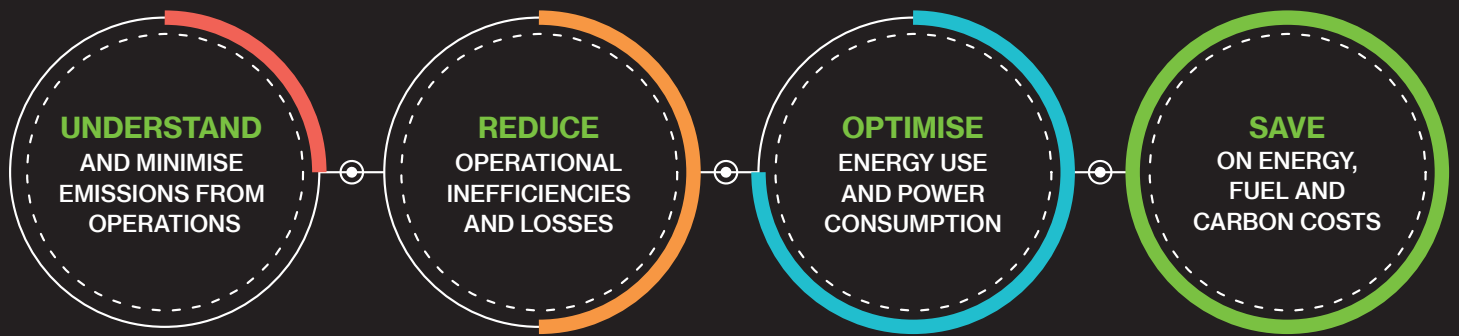
**emissions.AI** is a digital solution that helps carbon intensive companies to overcome these challenges, decarbonise their operations and reduce emissions, energy and fuel costs.

The first of its kind, **emissions.AI** is a sophisticated technology solution created specifically for complex facilities. It contextualises operational emissions and leverages engineering first principles, analytics, and AI to identify hidden operational inefficiencies, improvements and opportunities for lower emissions and costs.



# A solution to help you decarbonise operations

**emissions.ai** has been designed to help companies with the largest carbon challenges:



**emissions.ai** can be used by your own teams (as a product-based solution) or our experts can provide insights and intelligence directly to your teams to act upon through a managed service.

## Actionable emissions intelligence


In a complex, dynamic environment affected by many variables, owners / operators need to understand where they should focus effort and action to drive improvements.

**emissions.ai** offers features and benefits across the life of your emissions reduction journey:



## An example of customer success

As part of their emissions reduction action plan, a global oil and gas operator deployed emissions.AI to one of its offshore facilities. The customer estimated savings of 7,000 tonnes of CO<sub>2</sub> across this facility within the first 12 months. Subsequently **emissions.AI** was rolled out to support efforts to reduce emissions and save costs across all the company's offshore facilities throughout the region.



7,000  
tonnes



cenovus  
ENERGY



INEOS



## Ready to start more sustainable operations?

To find out more or to book a discovery session, get in touch:

[E. info@opex-group.com](mailto:info@opex-group.com)

Or visit:

[www.emissions.ai](http://www.emissions.ai)

OPEX (an ERM Group Company) provides digital solutions that help carbon intensive industries achieve cleaner, more efficient and lower cost operations. <sup>1</sup>

**OPEX**  
an ERM Group company