

# AZURE ARC-ENABLED DATA SERVICES BRIEFING

# THE FUTURE STARTS NOW

**14K+**

---

**Associates**

**40**

---

**Offices**

Europe, USA & APAC

**15+**

---

**Countries**

With SoftServe clients

**77**

---

**NPS score  
(Global)**

**10,500+**

---

**Engineers**

**1700+**

---

**Certified**

Cloud Engineers

**ISO**

---

**27001 : 2013**

Standard

**30%**

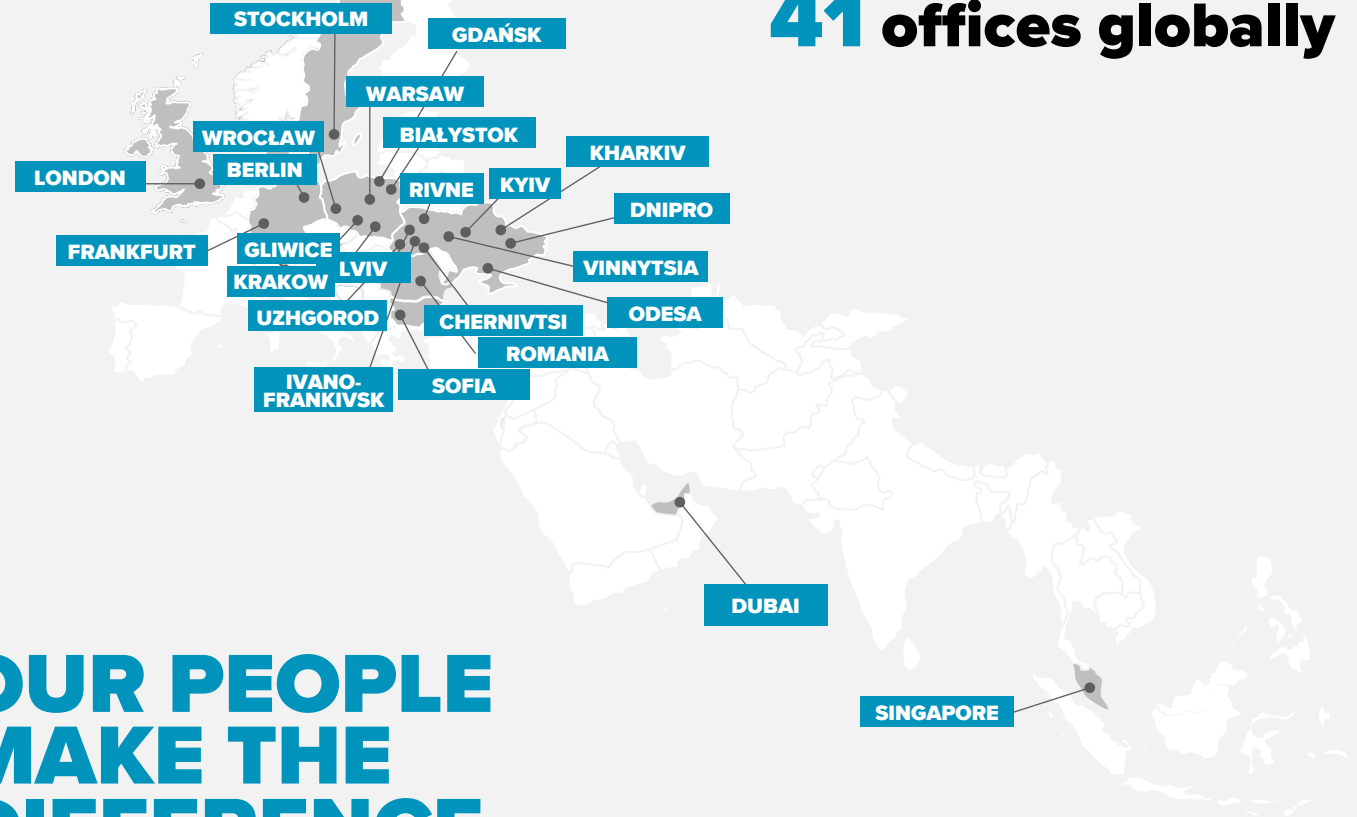
---

**CAGR**

softserve

# GLOBAL NETWORK

**13,000+** experts in  
**41** offices globally



**OUR PEOPLE  
MAKE THE  
DIFFERENCE**

softserve

# FEATURED CUSTOMERS



**SAMSUNG**

**cloudera**



**logitech**

**BBVA**



**Nordea**

**kony DBX**



**ATLASSIAN**



**Panasonic**



**MEDHOST**



**softserve**

# SOFTSERVE + MICROSOFT PARTNERSHIP

## MICROSOFT SOLUTIONS PARTNER

Partner since 2004

## MICROSOFT PRACTICE

- 2 Microsoft MVPs
- 500+ Satisfied Customers
- 1,000+ Delivered Projects
- 1,200+ Microsoft Certified Professionals
- 150+ Azure Certified Professionals

## PROGRAM PARTICIPATION

- ECIF Eligible
- AMMP Eligible
- AAAP Eligible
- Solution Assessment Partner (UAE only)
- 15+ Co-sell Marketplace Offerings



Infrastructure  
Azure



Digital & App Innovation  
Azure



Data & AI  
Azure

Specialist  
Kubernetes on Azure

Specialist  
Analytics

## 3 X SOLUTION AREAS

- Data & AI
- Digital & App Innovation
- Infrastructure

## 2 X ADVANCED SPECIALISATION

- Kubernetes on Azure
- Analytics on Azure

**softserve**

# SOFTSERVE CTO ORG CENTERS OF EXCELLENCE



## RESEARCH & DEVELOPMENT

- R&D Innovation
- Feasibility Study
- R&D as a Service
- Deep Tech Research
- Advanced AI



## EXPERIENCE DESIGN

- Design Thinking
- Design Research
- Design Strategy
- Product Design
- Service Design
- Design Ops



## SOLUTIONS

- Digital Strategy
- Business Analysis
- Product Management
- Architecture
- Performance Testing



## INTELLIGENT ENTERPRISE

- Big Data
- Data Science, AI/ML, MLOps
- IoT
- Robotics
- Extended Reality (AR / VR / MR)
- GDPR
- Blockchain
- Technical Due Diligence



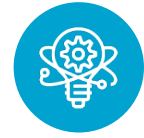
## PLATFORMS

- Salesforce
- Sitecore
- MS Dynamics
- AEM
- EPiServer
- MuleSoft
- Magento
- Dell Boomi
- Shopify
- Drupal



## CRITICAL SERVICES

- Cloud/DevOps
- Cyber Security
- Managed Support
- Enterprise IT



## INNOVATION

- Innovation Strategy
- Innovation Platform

# CLOUD EXPERTISE HIGHLIGHTS

**900+**

Cloud-Based  
Solutions  
Engagements

**3000+**

Cloud  
Experienced  
Professionals

**1000+**

Engineers with  
cloud-related  
certification

**100+**

Hyper  
Converged  
Projects

**150+**

Data Cloud  
Experts

## **300+ BUSINESS ANALYSTS**

- Consultants
- Business Analysts
- Usability Experts
- Project Management
- Project Managers

## **3000+ TECHNOLOGISTS**

- Cloud Enterprise Architects
- Data Architects
- QA Engineers
- DevOps
- Technical Support

## **150+ STRATEGISTS AND DESIGNERS**

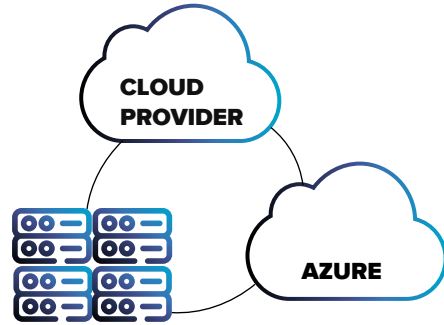
- Digital Strategists
- Subject Matter Expertise
- Program Managers
- Experience Design and Usability
- Visual Designers



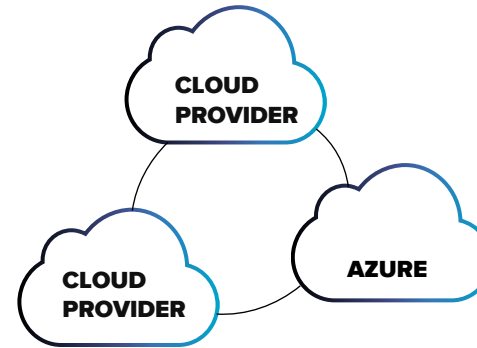
**10 YEARS**  
**PROVEN DELIVERY OF**  
**CLOUD-BASED SOLUTIONS**

softserve

# HYBRID vs MULTICLOUD



A hybrid cloud is a type of cloud computing that combines a private cloud (on-premises infrastructure), with a public cloud.



Multicloud computing refers to the use of multiple cloud computing services from more than one cloud provider (including private and public clouds), in a heterogeneous environment.



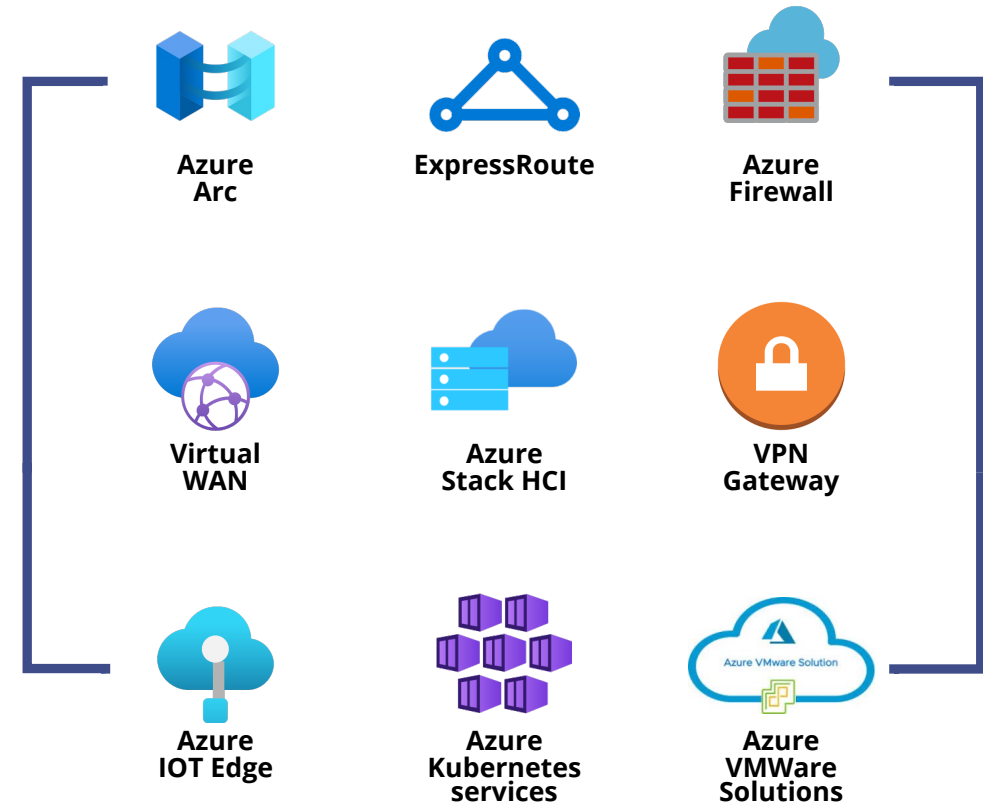
# HYBRID, EDGE & MULTICLOUD

Cloud-managed edge computing devices bring the computing power of the public cloud to the private cloud. Working with this direction, you can leverage the power of new services:

- Azure Arc
- Azure Stack HCI
- Azure VMWare Solution

## WE PROPOSE:

- PoC and workshops
- Design and implement Hybrid solution
- Build Multi-cloud strategy
- Azure Hybrid services integration



# HYBRID & MULTICLOUD MOTIVATION



**PRODUCT  
MIGRATION AND  
MODERNIZATION**



**BUSINESS  
CONTINUITY**



**SAFE  
INNOVATIONS**



**MAXIMIZE  
PERFORMANCE**

softserve

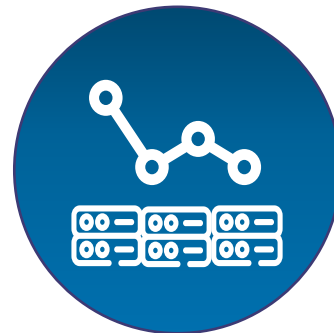
# HYBRID & MULTICLOUD USE CASES



**FLEXIBILITY TO  
MOVE  
WORKLOADS  
ACROSS  
PLATFORMS**



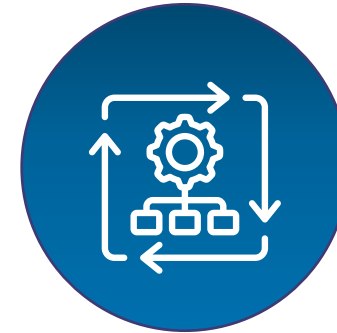
**WORKLOADS  
RELIABILITY**



**MINIMIZE  
DEPENDENCY  
ON PLATFORM**



**COST  
EFFICIENCY**



**WORKLOADS  
TIERS  
SEGRAGATIONS**

# ABOUT AZURE ARC-ENABLED DATA SERVICES

Azure Arc product group is a bridge that extends the Azure platform to help build applications and services with the flexibility to run across data centers, at the edge, and in multi-cloud environments. Arc-Enabled Data Services is a product that makes it possible to run Azure data services such as Azure Arc-enabled-SQL Managed Instance and Azure Arc-enabled PostgreSQL Hyperscale on top of any Kubernetes cluster. Azure Arc-Enabled Data Services will enable you to:

- **Reduce costs.** The deployment of Azure Arc reduces their total cost of ownership for data management. The technology helps data management by automating many of the tasks associated with maintaining an on-premises data infrastructure.
- **Accelerate development.** The use of Azure Arc allows accelerating the development of new applications and services, as the technology simplifies the process of provisioning and managing databases.
- **Keep up with the availability requirements.** Azure Arc improves the availability and performance of databases, as the technology simplifies scaling resources to meet changing demand and integrates with Azure Monitor to provide real-time visibility into the health and performance of the databases.

# Arc-Enabled Data Services Briefing

## CONSISTS OF:

- **Reviewing benefits and concepts** of the Azure Arc-Enabled Data Services
- **Demonstrating typical use cases** of Azure Arc-Enabled Data Services
- **Discussing dependencies and installation options** of Azure Arc-Enabled Data Services
- **Walking through the main features** of Azure Arc-Enabled Data Services

### Create Azure Arc data controller

**Step 1: Deployment pre-requisites**

The Kubernetes cluster must already be arc-enabled with the az connectedk8s connect command. Please use our [documentation page](#) to learn more.

Required tools

Tool	Description	Status	Version	Required Version	Discovered Path or Additional Information
kubectl	Runs commands against Kubernetes clusters	Installed	1.23.1		/opt/homebrew/bin/kubectl
Azure CLI	Manages Azure resources	Installed	2.41.0		/opt/homebrew/bin/az

The screenshot displays the 'SQL Managed Instance Metrics' dashboard. It features several line charts and summary statistics. The top row shows 'Transactions/sec' and 'Batch Requests/sec'. The middle row shows 'Wait Statistics (Wait time ms)' with a legend for SOS\_WORK\_DISPATCHER, SOS\_SCHEDULER\_YIELD, RESERVED\_MEMORY\_ALLOCATION\_EXT, and MEMORY\_ALLOCATION\_EXT. The bottom row shows 'Memory Broker Clerks' and 'Wait Statistics (Waiting task count)' with a legend for MEMORY\_ALLOCATION\_EXT, SOS\_WORK\_DISPATCHER, RESERVED\_MEMORY\_ALLOCATION\_EXT, and SOS\_SCHEDULER\_YIELD. The dashboard also includes a 'Database Activity' and 'SQL Server Activity' section at the bottom.

# BRIEFING AGENDA

- **Hybrid & Multicloud**

*20 min*

Walk through typical challenges of hybrid and multi-cloud

- **Introduction to Azure Arc**

*20 min*

Introduction to Azure Arc product group and Arc-Enabled Data Services as an answer to hybrid and multi-cloud challenges

- **Use cases**

*20 min*

Overview of typical use cases for Arc-Enabled Data Services

- **Benefits & flexibility**

*1 hour*

Demonstrate flexibility of Arc-Enabled Data Services by introducing installation options

- **Q&A Session**

*1 hour*

**FOR  
THE  
FUTURE**

**softserve**