

# NEC'S NETWORK CONNECT PLATFORM FOR MICROSOFT TEAMS

30<sup>th</sup> December 2021



# AGENDA

01

## NEC NETWORK CONNECT

- Platform Overview

02

## MS TEAMS INTEGRATION

- Direct Routing
- Pricing

03

## MS TEAMS MARKET

- Market Explosion
- Platform Benefits

04

## MICROSOFT PARTNERSHIP

- 40 Years of relationship
- Co-sell on Marketplace

05

## CUSTOMER TESTIMONIAL

06

## PARTNER BENEFIT

07

## Q & A

08

## APPENDIX



INTRODUCING

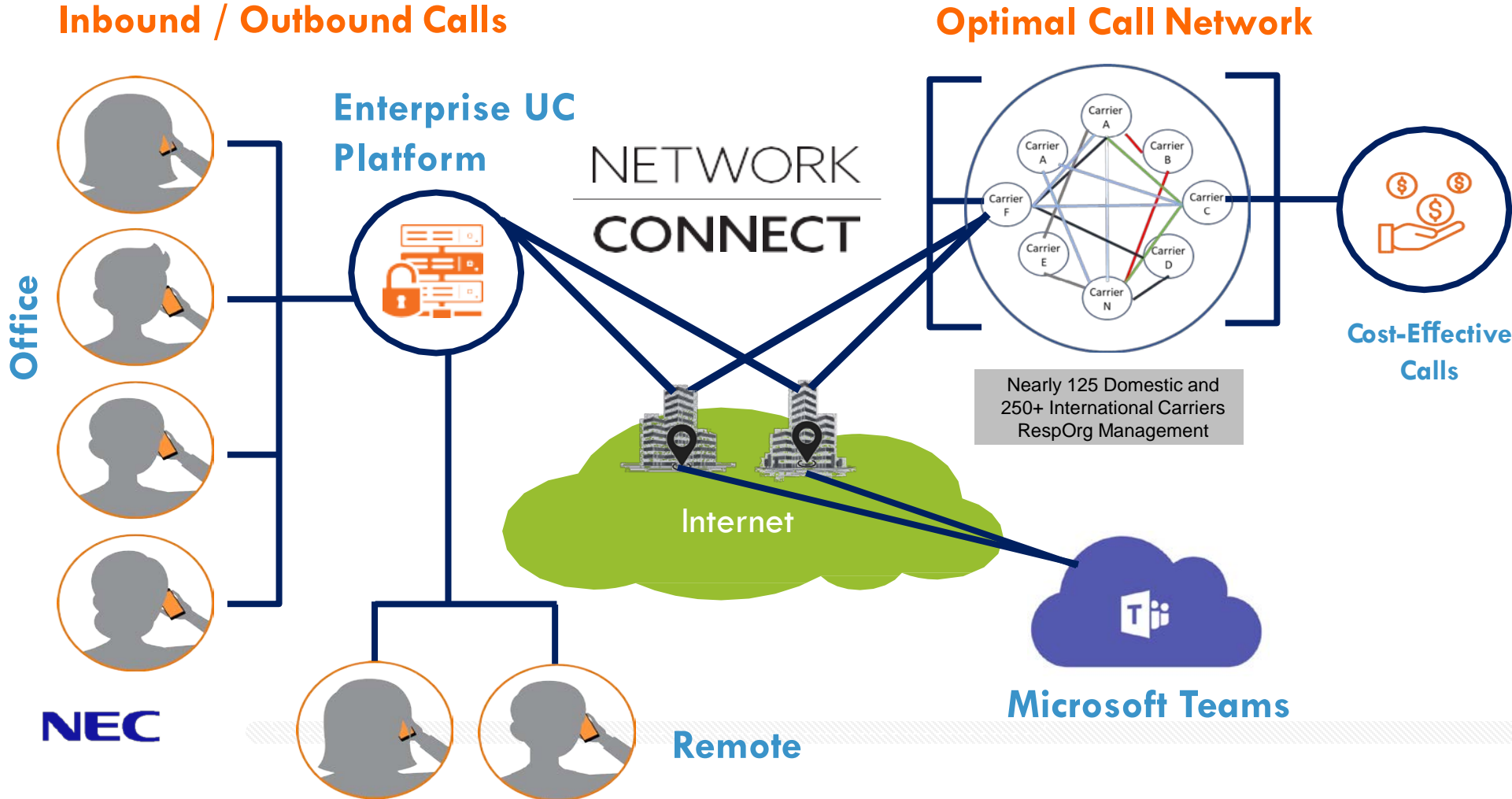
# NEC NETWORK CONNECT PLATFORM

Carrier Grade Solution for the  
Enterprise, at your fingertip!



# NETWORK CONNECT PLATFORM -

An Intelligent Call Routing solution built on **AI and M2M learning** that significantly **reduces telephony costs** while **improving operational efficiency**



- Seamless integration into existing UC systems
- No business interruption
- Improved voice quality & efficiency
- Single Partner
- Significant cost savings

# NEC NETWORK CONNECT PLATFORM SERVICES

## DIRECT ROUTING WITH CARRIER SERVICES

**Direct Routing** with Microsoft Teams with carrier services like long-distance/international calling, DID, TFN, etc.

## GLOBAL ORCHESTRATION

**Orchestrate** Global Connectivity with Network Connect. Interconnect and manage connectivity of your multi-site, multi-vendor network.

## CARRIER SERVICES

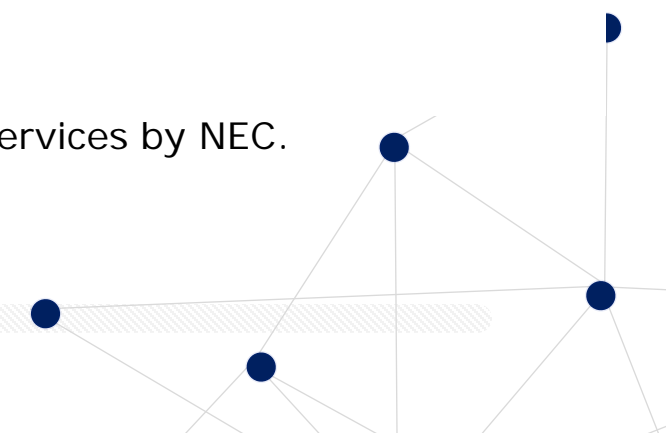
**SIP Trunk** Carrier services including DIA (Direct Internet Access), SD-WAN and private circuits

## RespOrg-as-a-Service

**Toll-Free Number (TFN)** Management for your organization. Control and manage your incoming call diversity with RespOrg-as-a-Service.

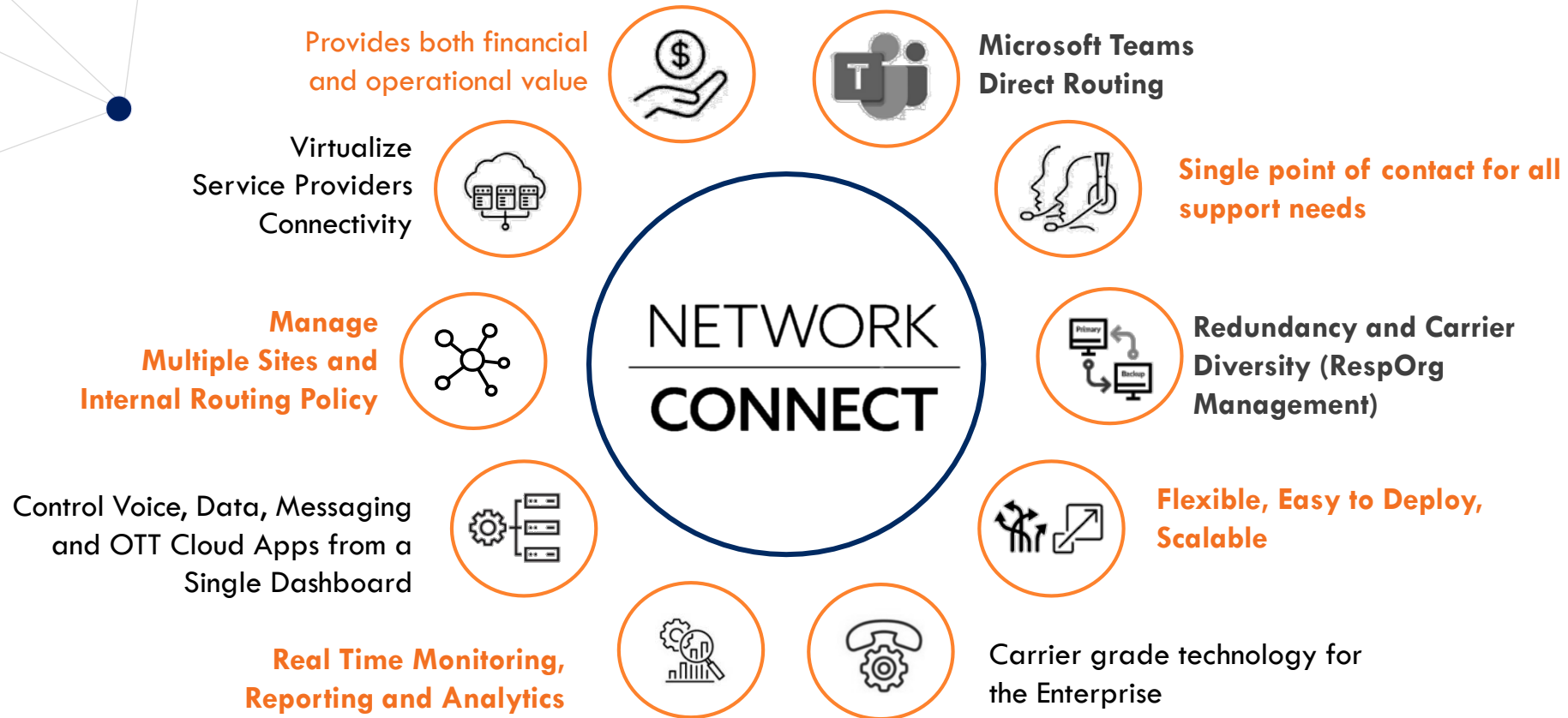
## HYPERCONVERGED

**Private Hosting** of your UC platform and telecommunications services by NEC.



# NEC's NETWORK CONNECT

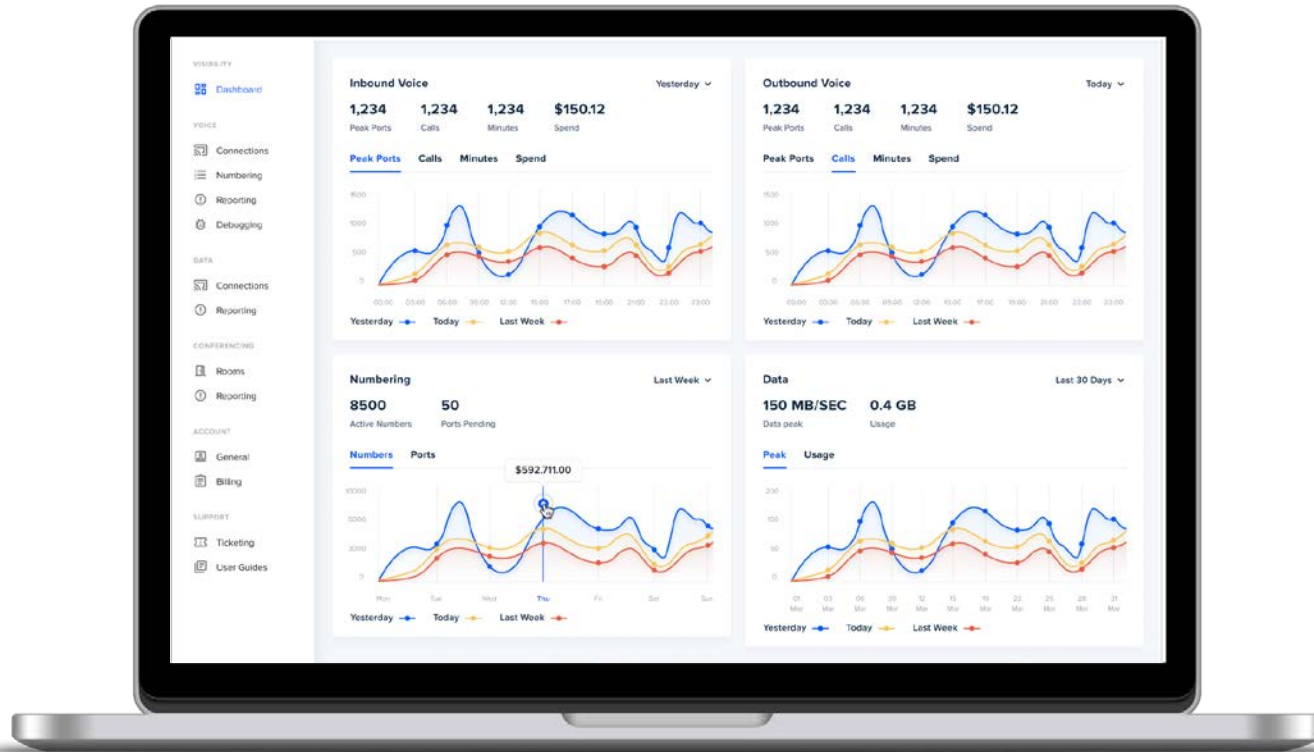
Delivers MS Teams Direct Routing Integration for Enhanced Telephony Experience



# HIGHLY COMPETITIVE BUNDLE PRICING OPTIONS

- Includes Unlimited Domestic Long Distance
- Includes DID for each MS Teams User: Ported or New
- Includes Dynamic Emergency Calling /Support for Nomadic 911
- Portal access for Visibility and Control
- Dual forking available
- Unmatched redundancy and reliability leveraging 350+ public carriers
- Contract Term: 3 Years or 5 Years

# FOR ALL MS TEAMS TELEPHONY– VISIBILITY & CONTROL



## NETWORK CONNECT

provides visibility and control of your carrier voice networks

- set network alerts
- identify potential network issues
- analysis of individual calls
- monitor monthly spend
- access other critical network / call statistics

## NETWORK CONNECT

automatically monitors and remediates network issues

- before they stop your contact center

## NETWORK CONNECT

includes a portal that provides visibility across your global voice network

- down to the individual call



# MOVING TO MS TEAMS IS THE MANDATE BUT ....

Businesses Need More  
than MS Teams alone:



Cost-Effective Long-Distance and International Calling



Compliance with E911 and local regulations

More than 85% MS  
Teams users integrate via  
Direct Routing



**NEC's Network  
Connect:**

Your Direct Connect  
Telephony Partner for  
MS Teams

**Not all MS Teams Carriers can do this.** NEC was the first to automatically route calls in 1956 and continues that tradition of innovation with NEC Network Connect.



99.999%  
Uptime SLA



Enabling and Integrating  
requires advanced Telephony  
expertise



Single pane of glass  
management console for  
visibility and control  
global of your global  
Teams deployment





# TESTIMONIAL

*“Our students are  
being  
empowered...”*

*During the pandemic, nearly 50,000 students switched to virtual learning. In 4 weeks, 7,000 Wichita USD 259 employees moved to NEC’s intelligent call routing, Network Connect, integrated with Microsoft Teams. Our students are being empowered with 21<sup>st</sup> century skills & knowledge!”*

— Rob Dickson, CIO, Wichita  
Public Schools USD 259

# PARTNER COLLATERALS

WEBSITE URL: <https://blog.necam.com/en/networkconnect#MST>

## Reduce your Microsoft Teams spend

Look no further than your telecom network where real savings are possible

It's doable with **NEC NETWORK CONNECT For Teams** by streamlining, protecting and improving the cost and efficiency of this collaborative platform through backend carrier network immigration and management.

Explore how ...

[Brochure](#) [Blog](#)



### Frequently Asked Questions (FAQ)

#### What is NEC's Network Connect for Microsoft Teams and why do I need it?

NEC's Network Connect brings high-quality, secure, and reliable Public Switch Telephone Network (PSTN) calling to Microsoft Teams environment. It also integrates the Microsoft Teams environment to customers' already existing PBX or UC platform (e.g., NEC's Univerge SV9500, SV9100, and 3C).

## Battle Card

**NETWORK CONNECT FOR MICROSOFT TEAMS BATTLE CARD**  
DIRECT ROUTING WITH NETWORK CONNECT TO ENABLE TELEPHONY FOR MICROSOFT TEAMS

**FIVE KEY SELLING POINTS FOR NETWORK CONNECT FOR MICROSOFT TEAMS**

- NETWORK CONNECT IS THE ONE STOP SHOP**  
Network Connect is certified by Microsoft for Direct Connect integration and provides all the features of Operator Connect
  - Fully managed E-SBC for Direct Routing integration
  - Global live view of all
- VISIBILITY AND CONTROL**  
Provides visibility and control of the entire Microsoft Teams Direct Routing environment
  - Control Voice, Data, and OTT Cloud Apps from a Single Dashboard
  - Global live view of all
- UNMATCHED RELIABILITY**  
Network Connect uses 375+ carriers to deliver PSTN connectivity out of Geo redundant Data Centers
  - Provides failover for both outbound and inbound calls with multi-carrier diversity
- Simplified Connectivity**  
**NEC Network Connect Platform**  
**ENABLING TELEPHONY FOR MICROSOFT TEAMS**  
Microsoft Teams Direct

**Thank You!**

