

HPE CLOUD ADOPTION WORKSHOPS

Microsoft Azure Stack HCI Planning workshop

Moving to the cloud not only brings numerous benefits but also increases the potential risk to an enterprise. The Microsoft Azure Stack HCI Planning workshop addresses the most common and pressing questions relative to Microsoft's hybrid cloud offerings. The workshop leverages the experience and intellectual property (IP) curated by [cloud consulting services](#) from Hewlett Packard Enterprise through hundreds of successful enterprise-wide cloud transformation engagements.

CHALLENGES OF MOVING TO HYBRID CLOUD

Moving to public cloud, especially when seamlessly integrated with new or existing hybrid cloud enterprise solutions, creates a modern and affordable digital enterprise often driven by a broader cloud transformation or digital transformation initiative. While the drive toward this transformation is compelling, certain workloads including legacy applications, applications sensitive to latency, applications with data chain of custody and compliance requirements, and those applications that must run in unreliable or network-constrained environments may not be well suited for the public cloud. For those, a hybrid approach, which may include the Microsoft Azure Stack HCI OS, is likely appropriate.

Successful implementation of Microsoft Azure Stack HCI relies on answers to questions such as:

- What hardware will be necessary to support the requirements of our workloads?
- What prerequisites need to be fulfilled before implementation?
- What impact will stretch clustering, if we choose to use it, have on the network?

- What is the correct storage architecture given our requirements?
- What Azure hybrid services will we use, and how much will they cost?
- What best practices and optimizations should we implement?

A SOLUTION TO GET YOU STARTED

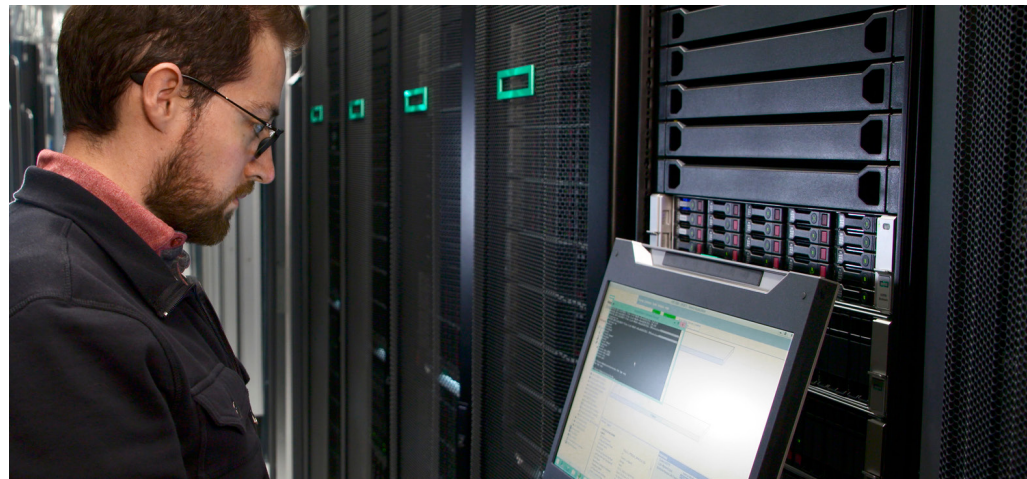
The Microsoft Azure Stack HCI Planning workshop, part of our HPE Cloud Adoption workshops family. It addresses these types of questions in a 90-minute, remote session with HPE hybrid cloud experts and leverages our experience gained during hundreds of cloud transformation engagements, our deep understanding of server platforms, and our decades of co-engineering experience with Microsoft.

The workshop is structured around the following activities and topics.

Workshop readiness

- Confirm the personnel within your organization that will participate in the workshop
- Review the agenda with you

Solution brief



To accelerate the workshop and your value, we ask you to complete a brief high-level survey that helps us better understand your cloud goals and where you see your organization as it relates to hybrid cloud. Based on the survey, Hewlett Packard Enterprise can identify any materials that would be useful for your organization to provide in advance or have on hand during the workshop.

Workshop topics

- Azure Stack HCI use cases and benefits
- Azure Stack HCI deployment prerequisites
- Azure Stack HCI network requirements for different use cases
- Azure cloud hybrid services and their applicability including Azure Arc
- Examples HPE validated platforms for Azure Stack HCI
- Best practices and optimizations that should be considered

OUTCOMES

The Microsoft Azure Stack HCI Planning workshop provides the following:

- A 90-minute remote session with hybrid cloud experts

Make the right purchase decision.
Contact our presales specialists.



Chat



Email



Call



HPE support



Get updates

- A summary of use cases with specific areas of focus for your organization
- An executive summary including:
 - The key findings from the workshop
 - The key use cases specific to your organization
 - High-level sample HPE configurations for the use cases
 - A suggested list of next steps

FREQUENTLY ASKED QUESTIONS

What specific HPE IP is used for the workshop?

HPE uses a suite of documents and slide sets, based on our experience, to build a workshop specific to Microsoft Azure Stack HCI and the customer's needs.

How many Azure Stack HCI designs, or implementations, has HPE performed?

With thousands of Microsoft Certified Professionals, HPE has been designing and deploying Hyper-V, Windows Server Software Defined, Azure Stack Hub, and Azure Stack HCI solutions dating back to 2007. HPE works with most of the Fortune 1000 companies and has designed and implemented Microsoft-based virtualization and hybrid cloud solutions, including Azure Stack HCI, for hundreds of them.

Who should plan to attend the Microsoft Azure Stack HCI Planning workshop?

Your cloud and platform thought leaders should attend including your IT leadership and enterprise and network architects affiliated with solution implementations.

Will HPE be willing to sign a non-disclosure agreement?

Yes. When dealing with proprietary and data privacy, confidentiality is of utmost importance and your partners need to be trusted to treat your information with the same level of diligence they would want their own data treated.

How much time will it take to complete the survey?

The short question survey should easily be completed within an hour and provides a jump-start for the workshop to help maximize its benefits to your firm.

WHY HPE POINTNEXT SERVICES?

HPE Pointnext Services has been successfully implementing hybrid cloud solutions for years. Through that experience, we have:

- Completed hundreds of successful enterprise-wide cloud adoption engagements
- Accelerated hybrid cloud planning using our proprietary tools, data-driven objectivity, and experience
- Established methodology, IP, scale, and global reach to address the entire lifecycle of the hybrid cloud transformation journey

LEARN MORE AT
hpe.com/services/cloud